

V&V Reference Report

L2 ASCDS Version : 8.4.4

Observation 58537 - L2 Version 2
Chandra X-Ray Center

L2 Processing Date : Apr 19 2012

Contents

1	Front	2
2	OBI	3
2.1	OBI	3
2.1.1	Images	3
2.1.2	Bias	3
2.1.3	Parameters	4
2.1.4	Events	4
2.2	Compared Parameters	5
2.3	Star Slots	6
2.4	FID Slots	6
A	Summary	7
A.1	Status	7
A.2	Comments	7

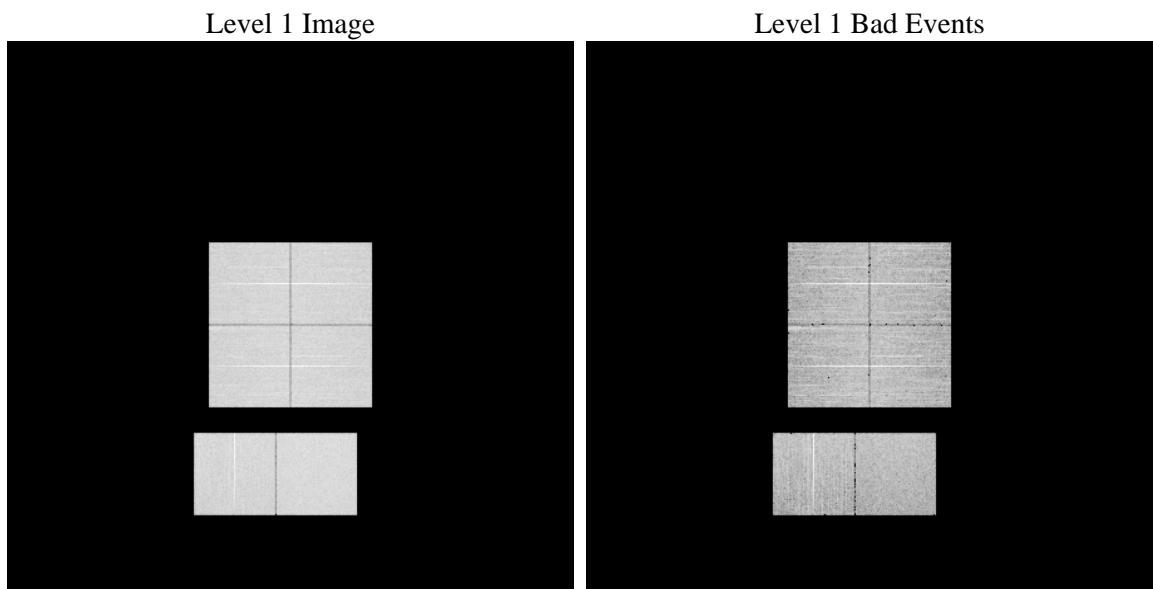
1 Front

seq_num	 	Sequence number
obs_id	58537	Observation id
title	ACIS-012367 diagnostics	Proposal title
observer	CHANDRA engineering request/realtime commanding	Principal investig
object	 	Source name
dtcycle	0	
cycle	P	events from which exps? Prim/Second/Both
ra_targ	0.0	Observer's specified target RA [deg]
dec_targ	0.0	Observer's specified target Dec [deg]
ra_nom	130.58119199189	Nominal RA [deg]
dec_nom	43.872625242621	Nominal Dec [deg]
roll_nom	203.86711473551	Nominal Roll [deg]
revision	2	Processing version of data
ontime	7375.9999725819	Sum of GTIs [s]
livetime	7282.6006196351	Livetime [s]
ontime0	7375.9999725819	Sum of GTIs [s]
ontime1	7375.9999725819	Sum of GTIs [s]
ontime2	7375.9770694375	Sum of GTIs [s]
ontime3	7375.9999725819	Sum of GTIs [s]
ontime6	7375.9360294342	Sum of GTIs [s]
ontime7	7375.9999725819	Sum of GTIs [s]
l2events	696247	Number of level 2 events

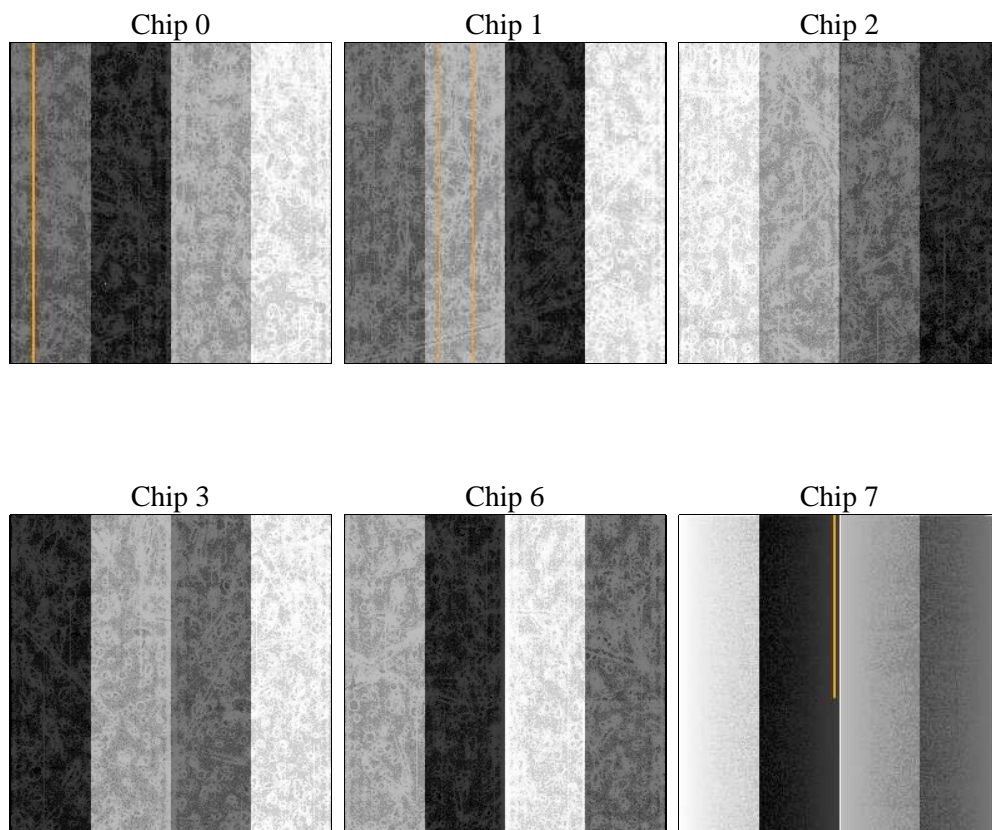
2 OBI

2.1 OBI

2.1.1 Images



2.1.2 Bias



2.1.3 Parameters

obi_num	1	Obi number	sched_exp_time	0.0	[s] Scheduled observation exposure time
ascdsver	8.4.4	Processing system revision	ontime	7375.9999725819	Sum of GTIs [s]
caldsver	4.4.9	 	ontime0	7375.9999725819	Sum of GTIs [s]
date	2012-04-19T18:14:43	Date and time of file creation	ontime1	7375.9999725819	Sum of GTIs [s]
revision	2	Processing version of data	ontime2	7375.9770694375	Sum of GTIs [s]
			ontime3	7375.9999725819	Sum of GTIs [s]
			ontime6	7375.9360294342	Sum of GTIs [s]
			ontime7	7375.9999725819	Sum of GTIs [s]
			l1events	1099617	Number of level 1 events

2.1.4 Events

	ccd 0	ccd 1	ccd 2	ccd 3	ccd 6	ccd 7		ccd 0	ccd 1	ccd 2	ccd 3	ccd 6	ccd 7
level 1 events	177541	176772	180677	180832	183693	200102	grade 0 events	63272	62953	64741	64894	64380	30728
rejected events	61219	59463	63883	63590	63056	54790		35%	35%	35%	35%	35%	15%
rejected %	34%	33%	35%	35%	34%	27%	grade 1 events	427	356	450	472	394	147
								0%	0%	0%	0%	0%	0%
							grade 2 events	20514	21466	19481	20138	21297	31694
								11%	12%	10%	11%	11%	15%
							grade 3 events	7791	7580	7831	7919	7610	13908
								4%	4%	4%	4%	4%	6%
							grade 4 events	7665	7653	7965	7829	7715	13862
								4%	4%	4%	4%	4%	6%
							grade 5 events	3519	3563	3295	3832	3651	9126
								1%	2%	1%	2%	1%	4%
							grade 6 events	17080	17657	16776	16462	19635	55120
								9%	9%	9%	9%	10%	27%
							grade 7 events	57273	55544	60138	59286	59011	45517
								32%	31%	33%	32%	32%	22%

2.2 Compared Parameters

Parameter	Planned	Actual	Parameter	Planned	Actual
Instrument	ACIS	ACIS	Obspar format version number	7	7
Detector	ACIS-012367	ACIS-012367	Obspar file type	PREDICTED	ACTUAL
Grating	NONE	NONE	Obspar update status	NONE	UPDATED
Data mode	FAINT	FAINT	On-chip summing requested	N	N
Observation mode	SECONDARY	SECONDARY	Subarray requested	NONE	NONE
[deg] Pointing RA	0	130.5811919918887	Alternating exposures requested	N	N
[deg] Pointing Dec	0	43.87262524262118	[s] Primary exposure time	3.2	3.2
[deg] Pointing Roll	0.0	203.8671147355132			
[mm] SIM focus pos	-0.782348	-0.7809083437167272			
[mm] SIM defocus	0	0.7524282956875696			
[mm] SIM translation stage pos	-233.592463	250.466033080201			
[mm] SIM translation stage offset	0	-0.01005468664627074			
[s] Observation start time (MET)	287443471.218495	287443470.19349			
Observation start date	2007-02-09T21:24:31	2007-02-09T21:24:30			
[s] Observation end time (MET)	287458852.369226	287458851.34422			
Observation end date	2007-02-10T01:40:52	2007-02-10T01:40:51			
Read mode	TIMED	TIMED			

2.3 Star Slots

2.4 FID Slots

A Summary

A.1 Status

V&V Scientist	Beth Sundheim
V&V Date (YYYY-MM-DD)	2012.04.20
V&V Edition	1
V&V Disposition and Status	OK
V&V Charge Time	7.3759999725819

A.2 Comments