

V&V Reference Report

L2 ASCDS Version : 8.4.4

Observation 58525 - L2 Version 2
Chandra X-Ray Center

L2 Processing Date : Apr 20 2012

Contents

1	Front	2
2	OBI	3
2.1	OBI	3
2.1.1	Images	3
2.1.2	Bias	3
2.1.3	Parameters	4
2.1.4	Events	4
2.2	Compared Parameters	5
2.3	Star Slots	6
2.4	FID Slots	6
A	Summary	7
A.1	Status	7
A.2	Comments	7

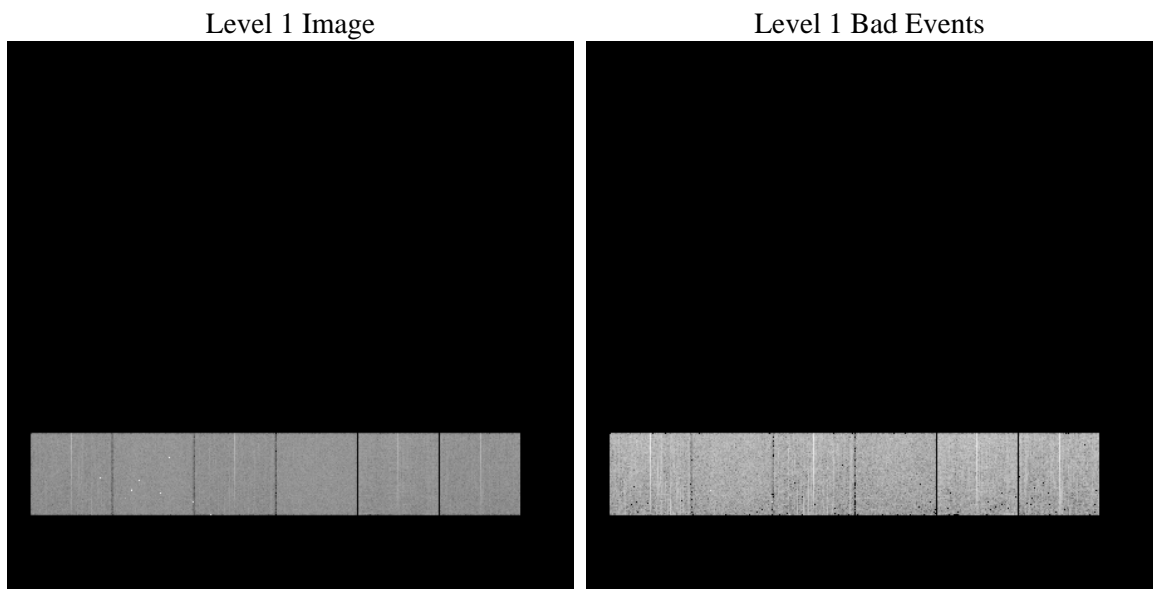
1 Front

seq_num	 	Sequence number
obs_id	58525	Observation id
title	ACIS-456789 diagnostics	Proposal title
observer	CHANDRA engineering request/realtime commanding	Principal investig
object	 	Source name
dtcycle	0	
cycle	P	events from which exps? Prim/Second/Both
ra_targ	0.0	Observer's specified target RA [deg]
dec_targ	0.0	Observer's specified target Dec [deg]
ra_nom	180.99083172652	Nominal RA [deg]
dec_nom	5.0272745549262	Nominal Dec [deg]
roll_nom	75.749365290575	Nominal Roll [deg]
revision	2	Processing version of data
ontime	4860.7999819517	Sum of GTIs [s]
livetime	4799.2496057579	Livetime [s]
ontime4	4860.7999819517	Sum of GTIs [s]
ontime5	4860.7999819517	Sum of GTIs [s]
ontime6	4860.7999819517	Sum of GTIs [s]
ontime7	4860.7999819517	Sum of GTIs [s]
ontime8	4860.7999819517	Sum of GTIs [s]
ontime9	4860.7594096661	Sum of GTIs [s]
l2events	471404	Number of level 2 events

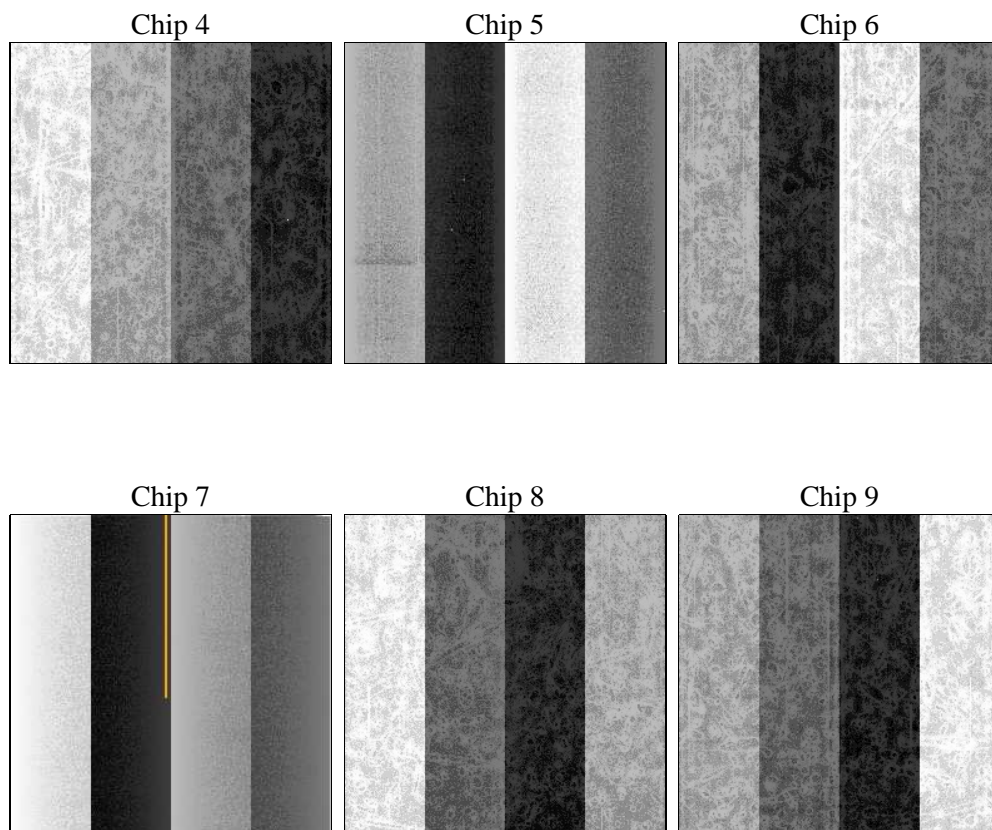
2 OBI

2.1 OBI

2.1.1 Images



2.1.2 Bias



2.1.3 Parameters

obi_num	0	Obi number	sched_exp_time	0.0	[s] Scheduled observation exposure time
ascdsver	8.4.4	Processing system revision	ontime	4860.7999819517	Sum of GTIs [s]
caldsver	4.4.9	 	ontime4	4860.7999819517	Sum of GTIs [s]
date	2012-04-20T06:57:28	Date and time of file creation	ontime5	4860.7999819517	Sum of GTIs [s]
revision	2	Processing version of data	ontime6	4860.7999819517	Sum of GTIs [s]
			ontime7	4860.7999819517	Sum of GTIs [s]
			ontime8	4860.7999819517	Sum of GTIs [s]
			ontime9	4860.7594096661	Sum of GTIs [s]
			l1events	772393	Number of level 1 events

2.1.4 Events

	ccd 4	ccd 5	ccd 6	ccd 7	ccd 8	ccd 9		ccd 4	ccd 5	ccd 6	ccd 7	ccd 8	ccd 9
level 1 events	122783	136570	124362	132250	135554	120874	grade 0 events	44434	19436	43149	20873	45194	41939
rejected events	47203	40290	43063	36286	48848	43857		36%	14%	34%	15%	33%	34%
rejected %	38%	29%	34%	27%	36%	36%	grade 1 events	441	307	236	101	278	302
								0%	0%	0%	0%	0%	0%
							grade 2 events	11265	35122	14860	20912	15712	13125
								9%	25%	11%	15%	11%	10%
							grade 3 events	5224	4413	5123	9191	5798	4985
								4%	3%	4%	6%	4%	4%
							grade 4 events	5028	4361	5088	9184	5748	5012
								4%	3%	4%	6%	4%	4%
							grade 5 events	2424	5597	2425	6171	3213	2721
								1%	4%	1%	4%	2%	2%
							grade 6 events	9629	32948	13079	35804	14254	11956
								7%	24%	10%	27%	10%	9%
							grade 7 events	44338	34386	40402	30014	45357	40834
								36%	25%	32%	22%	33%	33%

2.2 Compared Parameters

Parameter	Planned	Actual
Instrument	ACIS	ACIS
Detector	ACIS-456789	ACIS-456789
Grating	NONE	NONE
Data mode	FAINT	FAINT
Observation mode	SECONDARY	SECONDARY
[deg] Pointing RA	0	180.9908317265246
[deg] Pointing Dec	0	5.027274554926184
[deg] Pointing Roll	0.0	75.74936529057534
[mm] SIM focus pos	-0.684267	-0.6828225247311905
[mm] SIM defocus	0	0.8505141146731063
[mm] SIM translation stage pos	-190.132523	250.466033080201
[mm] SIM translation stage offset	0	-0.01005468664627074
[s] Observation start time (MET)	288312909.059818	288312908.0348
Observation start date	2007-02-19T22:55:09	2007-02-19T22:55:08
[s] Observation end time (MET)	288326996.660489	288326995.63547
Observation end date	2007-02-20T02:49:57	2007-02-20T02:49:55
Read mode	TIMED	TIMED

Parameter	Planned	Actual
Obspar format version number	7	7
Obspar file type	PREDICTED	ACTUAL
Obspar update status	NONE	UPDATED
On-chip summing requested	N	N
Subarray requested	NONE	NONE
Alternating exposures requested	N	N
[s] Primary exposure time	3.2	3.2

2.3 Star Slots

2.4 FID Slots

A Summary

A.1 Status

V&V Scientist	Beth Sundheim
V&V Date (YYYY-MM-DD)	2012.04.22
V&V Edition	1
V&V Disposition and Status	OK
V&V Charge Time	4.8607999819517

A.2 Comments