

V&V Reference Report

L2 ASCDS Version : 8.4.4

Observation 58352 - L2 Version 2
Chandra X-Ray Center

L2 Processing Date : Apr 26 2012

Contents

1	Front	2
2	OBI	3
2.1	OBI	3
2.1.1	Images	3
2.1.2	Bias	3
2.1.3	Parameters	4
2.1.4	Events	4
2.2	Compared Parameters	5
2.3	Star Slots	6
2.4	FID Slots	6
A	Summary	7
A.1	Status	7
A.2	Comments	7

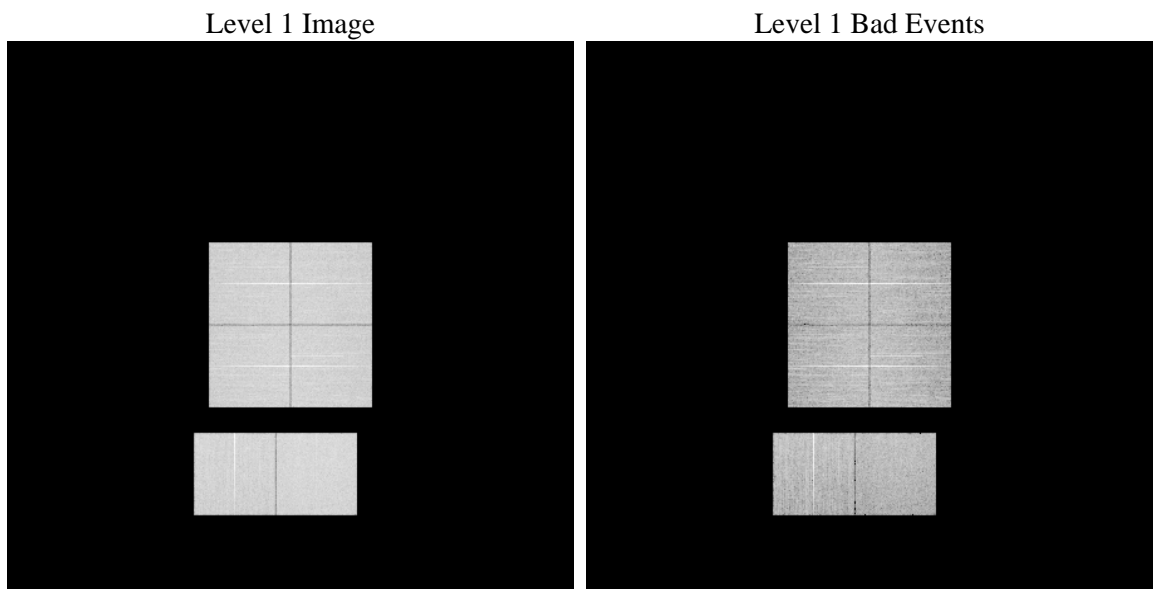
1 Front

seq_num	 	Sequence number
obs_id	58352	Observation id
title	ACIS-012367 diagnostics	Proposal title
observer	CHANDRA engineering request/realtime commanding	Principal investig
object	 	Source name
dtcycle	0	
cycle	P	events from which exps? Prim/Second/Both
ra_targ	0.0	Observer's specified target RA [deg]
dec_targ	0.0	Observer's specified target Dec [deg]
ra_nom	254.0464166906	Nominal RA [deg]
dec_nom	-49.994966639232	Nominal Dec [deg]
roll_nom	333.57812515403	Nominal Roll [deg]
revision	2	Processing version of data
ontime	8210.4120343328	Sum of GTIs [s]
livetime	8106.4468534374	Livetime [s]
ontime0	8210.3709943295	Sum of GTIs [s]
ontime1	8210.3299543262	Sum of GTIs [s]
ontime2	8207.0479539037	Sum of GTIs [s]
ontime3	8210.4530743361	Sum of GTIs [s]
ontime6	8210.2478743196	Sum of GTIs [s]
ontime7	8210.4120343328	Sum of GTIs [s]
l2events	715960	Number of level 2 events

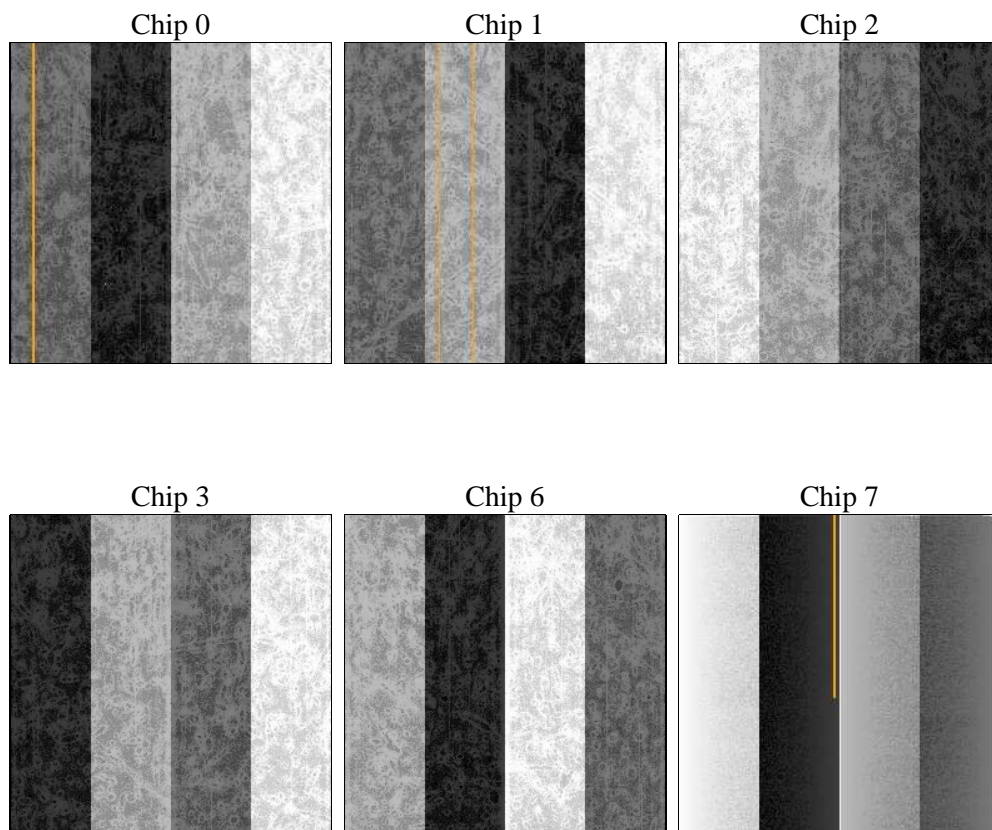
2 OBI

2.1 OBI

2.1.1 Images



2.1.2 Bias



2.1.3 Parameters

obi_num	0	Obi number	sched_exp_time	0.0	[s] Scheduled observation exposure time
ascdsver	8.4.4	Processing system revision	ontime	8210.4120343328	Sum of GTIs [s]
caldsver	4.4.9	 	ontime0	8210.3709943295	Sum of GTIs [s]
date	2012-04-26T14:19:20	Date and time of file creation	ontime1	8210.3299543262	Sum of GTIs [s]
revision	2	Processing version of data	ontime2	8207.0479539037	Sum of GTIs [s]
			ontime3	8210.4530743361	Sum of GTIs [s]
			ontime6	8210.2478743196	Sum of GTIs [s]
			ontime7	8210.4120343328	Sum of GTIs [s]
			l1events	1204122	Number of level 1 events

2.1.4 Events

	ccd 0	ccd 1	ccd 2	ccd 3	ccd 6	ccd 7		ccd 0	ccd 1	ccd 2	ccd 3	ccd 6	ccd 7
level 1 events	193411	191929	198209	197129	202894	220550	grade 0 events	65228	64169	67039	67501	65326	31522
rejected events	74040	72076	78711	77074	79757	67616		33%	33%	33%	34%	32%	14%
rejected %	38%	37%	39%	39%	39%	30%	grade 1 events	451	380	472	486	392	161
								0%	0%	0%	0%	0%	0%
							grade 2 events	21371	22729	19735	20301	22720	33694
								11%	11%	9%	10%	11%	15%
							grade 3 events	7888	7635	8239	7982	7672	14243
								4%	3%	4%	4%	3%	6%
							grade 4 events	7889	7683	7998	8063	7633	14126
								4%	4%	4%	4%	3%	6%
							grade 5 events	3848	4015	3645	4241	4221	10565
								1%	2%	1%	2%	2%	4%
							grade 6 events	17869	18568	17380	17127	20676	60536
								9%	9%	8%	8%	10%	27%
							grade 7 events	68867	66750	73701	71428	74254	55703
								35%	34%	37%	36%	36%	25%

2.2 Compared Parameters

Parameter	Planned	Actual	Parameter	Planned	Actual
Instrument	ACIS	ACIS	Obspar format version number	7	7
Detector	ACIS-012367	ACIS-012367	Obspar file type	PREDICTED	ACTUAL
Grating	NONE	NONE	Obspar update status	NONE	UPDATED
Data mode	FAINT	FAINT	On-chip summing requested	N	N
Observation mode	SECONDARY	SECONDARY	Subarray requested	NONE	NONE
[deg] Pointing RA	0	254.0464166905975	Alternating exposures requested	N	N
[deg] Pointing Dec	0	-49.99496663923249	[s] Primary exposure time	3.2	3.2
[deg] Pointing Roll	0.0	333.5781251540304			
[mm] SIM focus pos	-0.782348	-0.7809083437167272			
[mm] SIM defocus	0	0.7524282956875696			
[mm] SIM translation stage pos	-233.592463	250.466033080201			
[mm] SIM translation stage offset	0	-0.01005468664627074			
[s] Observation start time (MET)	298631648.101787	298631647.07679			
Observation start date	2007-06-19T09:14:08	2007-06-19T09:14:07			
[s] Observation end time (MET)	298655044.752906	298655043.72791			
Observation end date	2007-06-19T15:44:05	2007-06-19T15:44:03			
Read mode	TIMED	TIMED			

2.3 Star Slots

2.4 FID Slots

A Summary

A.1 Status

V&V Scientist	Jen Lauer
V&V Date (YYYY-MM-DD)	2012.04.26
V&V Edition	1
V&V Disposition and Status	OK
V&V Charge Time	8.2104120343328

A.2 Comments