

# V&V Reference Report

## L2 ASCDS Version : 8.4.4

Observation 58314 - L2 Version 2  
Chandra X-Ray Center

L2 Processing Date : Apr 28 2012

## Contents

<b>1</b>	<b>Front</b>	<b>2</b>
<b>2</b>	<b>OBI</b>	<b>3</b>
2.1	OBI . . . . .	3
2.1.1	Images . . . . .	3
2.1.2	Bias . . . . .	3
2.1.3	Parameters . . . . .	4
2.1.4	Events . . . . .	4
2.2	Compared Parameters . . . . .	5
2.3	Star Slots . . . . .	6
2.4	FID Slots . . . . .	6
<b>A</b>	<b>Summary</b>	<b>7</b>
A.1	Status . . . . .	7
A.2	Comments . . . . .	7

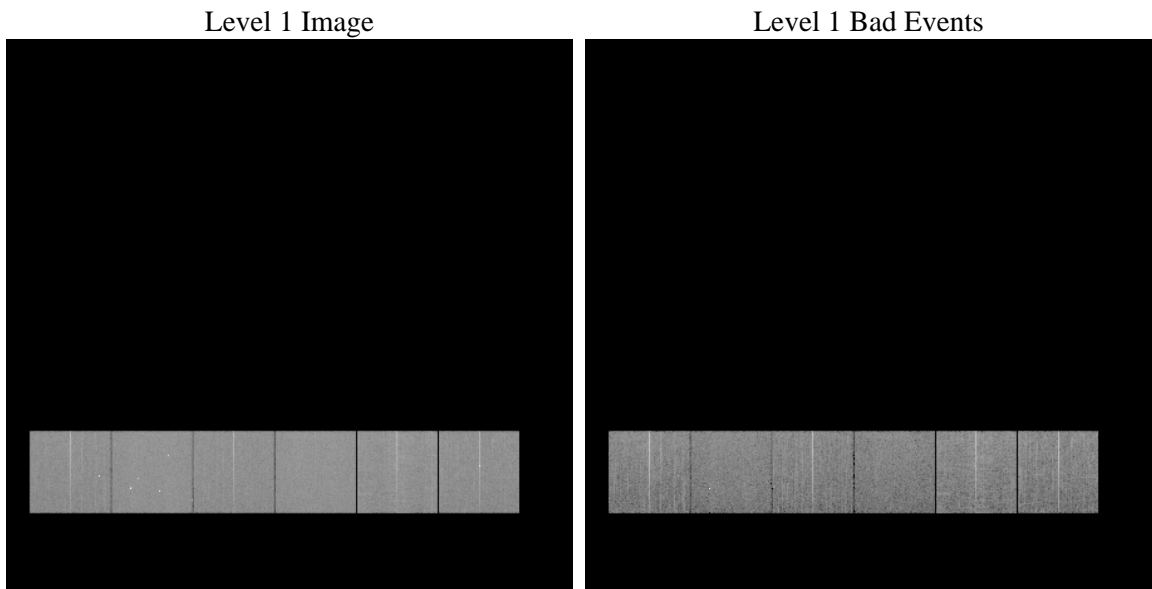
# 1 Front

seq_num	&#160	Sequence number
obs_id	58314	Observation id
title	ACIS-456789 diagnostics	Proposal title
observer	CHANDRA engineering request/realtime commanding	Principal investig
object	&#160	Source name
dtcycle	0	&#160
cycle	P	events from which exps? Prim/Second/Both
ra_targ	0.0	Observer's specified target RA [deg]
dec_targ	0.0	Observer's specified target Dec [deg]
ra_nom	305.12644946498	Nominal RA [deg]
dec_nom	-49.976777223581	Nominal Dec [deg]
roll_nom	20.911832571164	Nominal Roll [deg]
revision	2	Processing version of data
ontime	7793.9339591265	Sum of GTIs [s]
livetime	7695.2424743924	Livetime [s]
ontime4	7793.8108391166	Sum of GTIs [s]
ontime5	7793.8929191232	Sum of GTIs [s]
ontime6	7793.8518791199	Sum of GTIs [s]
ontime7	7793.9339591265	Sum of GTIs [s]
ontime8	7793.7697991133	Sum of GTIs [s]
ontime9	7793.9749991298	Sum of GTIs [s]
l2events	703108	Number of level 2 events

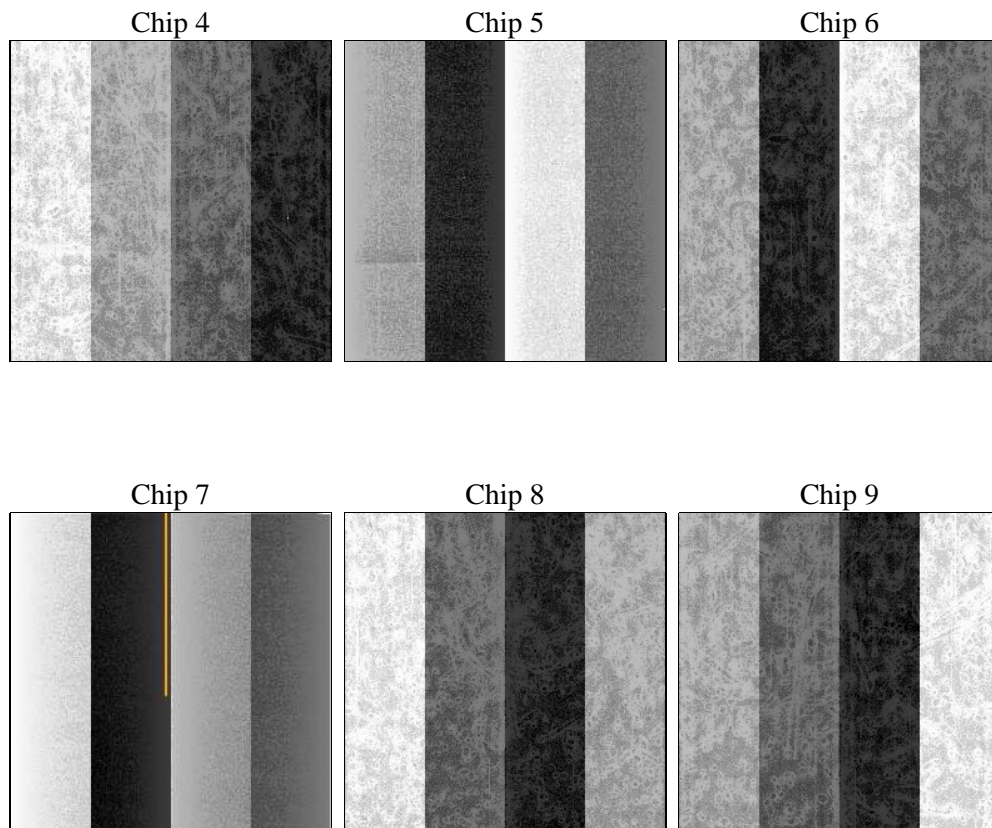
## 2 OBI

### 2.1 OBI

#### 2.1.1 Images



#### 2.1.2 Bias



### 2.1.3 Parameters

obi_num	0	Obi number	sched_exp_time	0.0	[s] Scheduled observation exposure time
ascdsver	8.4.4	Processing system revision	ontime	7793.9339591265	Sum of GTIs [s]
caldsver	4.4.9	&#160	ontime4	7793.8108391166	Sum of GTIs [s]
date	2012-04-28T02:39:46	Date and time of file creation	ontime5	7793.8929191232	Sum of GTIs [s]
revision	2	Processing version of data	ontime6	7793.8518791199	Sum of GTIs [s]
			ontime7	7793.9339591265	Sum of GTIs [s]
			ontime8	7793.7697991133	Sum of GTIs [s]
			ontime9	7793.9749991298	Sum of GTIs [s]
			l1events	1181112	Number of level 1 events

### 2.1.4 Events

	ccd 4	ccd 5	ccd 6	ccd 7	ccd 8	ccd 9		ccd 4	ccd 5	ccd 6	ccd 7	ccd 8	ccd 9
level 1 events	186079	207176	187798	205571	206872	187616	grade 0 events	64751	26559	63594	31159	66614	63938
rejected events	73810	66079	69299	59631	77893	71080		34%	12%	33%	15%	32%	34%
rejected %	39%	31%	36%	29%	37%	37%	grade 1 events	609	226	366	147	420	478
								0%	0%	0%	0%	0%	0%
							grade 2 events	17990	50011	20618	32032	23562	19939
								9%	24%	10%	15%	11%	10%
							grade 3 events	7559	7287	7580	14295	8904	7465
								4%	3%	4%	6%	4%	3%
							grade 4 events	7481	7197	7377	13807	8883	7492
								4%	3%	3%	6%	4%	3%
							grade 5 events	3964	9608	4061	10046	5245	4429
								2%	4%	2%	4%	2%	2%
							grade 6 events	14488	50043	19330	54647	21016	17702
								7%	24%	10%	26%	10%	9%
							grade 7 events	69237	56245	64872	49438	72228	66173
								37%	27%	34%	24%	34%	35%

## 2.2 Compared Parameters

Parameter	Planned	Actual	Parameter	Planned	Actual
Instrument	ACIS	ACIS	Obspar format version number	7	7
Detector	ACIS-456789	ACIS-456789	Obspar file type	PREDICTED	ACTUAL
Grating	NONE	NONE	Obspar update status	NONE	UPDATED
Data mode	FAINT	FAINT	On-chip summing requested	N	N
Observation mode	SECONDARY	SECONDARY	Subarray requested	NONE	NONE
[deg] Pointing RA	0	305.1264494649791	Alternating exposures requested	N	N
[deg] Pointing Dec	0	-49.97677722358072	[s] Primary exposure time	3.2	3.2
[deg] Pointing Roll	0.0	20.91183257116382			
[mm] SIM focus pos	-0.684267	-0.7809083437167272			
[mm] SIM defocus	0	0.7524282956875696			
[mm] SIM translation stage pos	-190.132523	250.466033080201			
[mm] SIM translation stage offset	0	-0.01005468664627074			
[s] Observation start time (MET)	300875613.059212	300875612.03421			
Observation start date	2007-07-15T08:33:33	2007-07-15T08:33:32			
[s] Observation end time (MET)	300885485.859685	300885484.83469			
Observation end date	2007-07-15T11:18:06	2007-07-15T11:18:04			
Read mode	TIMED	TIMED			

## **2.3 Star Slots**

## **2.4 FID Slots**

## **A Summary**

### **A.1 Status**

V&V Scientist	Jen Lauer
V&V Date (YYYY-MM-DD)	2012.04.30
V&V Edition	1
V&V Disposition and Status	OK
V&V Charge Time	7.7939339591265

### **A.2 Comments**