

V&V Reference Report

L2 ASCDS Version : 8.4.4

Observation 58271 - L2 Version 2
Chandra X-Ray Center

L2 Processing Date : Apr 29 2012

Contents

1	Front	2
2	OBI	3
2.1	OBI	3
2.1.1	Images	3
2.1.2	Bias	3
2.1.3	Parameters	4
2.1.4	Events	4
2.2	Compared Parameters	5
2.3	Star Slots	6
2.4	FID Slots	6
A	Summary	7
A.1	Status	7
A.2	Comments	7

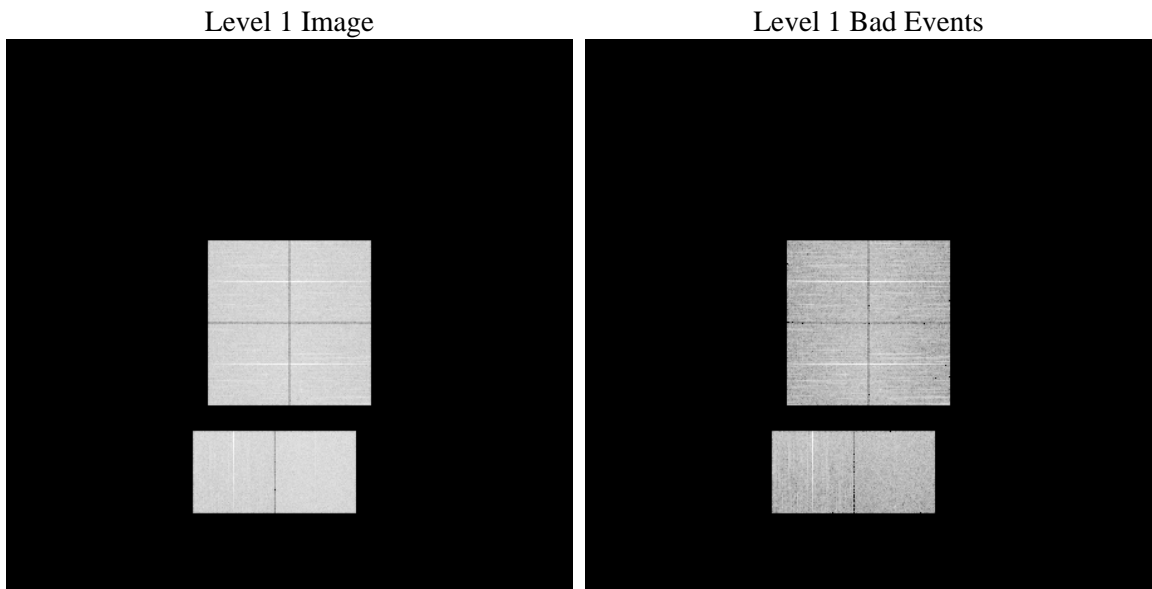
1 Front

seq_num	 	Sequence number
obs_id	58271	Observation id
title	ACIS-012367 diagnostics	Proposal title
observer	CHANDRA engineering request/realtime commanding	Principal investig
object	 	Source name
dtcycle	0	
cycle	P	events from which exps? Prim/Second/Both
ra_targ	0.0	Observer's specified target RA [deg]
dec_targ	0.0	Observer's specified target Dec [deg]
ra_nom	319.97534285842	Nominal RA [deg]
dec_nom	12.984313036908	Nominal Dec [deg]
roll_nom	180.30568738971	Nominal Roll [deg]
revision	2	Processing version of data
ontime	7797.3640145063	Sum of GTIs [s]
livetime	7698.6290963457	Livetime [s]
ontime0	7797.322974503	Sum of GTIs [s]
ontime1	7797.2819344997	Sum of GTIs [s]
ontime2	7797.2408944964	Sum of GTIs [s]
ontime3	7797.4050545096	Sum of GTIs [s]
ontime6	7797.1998544931	Sum of GTIs [s]
ontime7	7797.3640145063	Sum of GTIs [s]
l2events	663755	Number of level 2 events

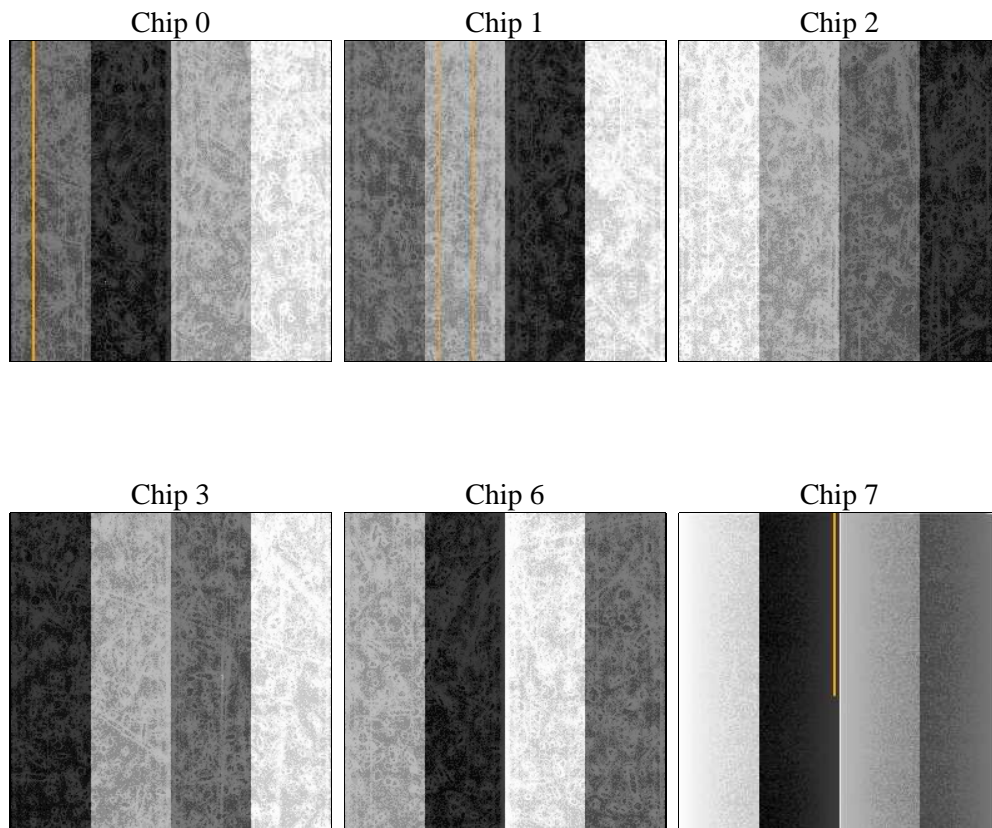
2 OBI

2.1 OBI

2.1.1 Images



2.1.2 Bias



2.1.3 Parameters

obi_num	0	Obi number	sched_exp_time	0.0	[s] Scheduled observation exposure time
ascdsver	8.4.4	Processing system revision	ontime	7797.3640145063	Sum of GTIs [s]
caldsver	4.4.9	 	ontime0	7797.322974503	Sum of GTIs [s]
date	2012-04-29T13:30:03	Date and time of file creation	ontime1	7797.2819344997	Sum of GTIs [s]
revision	2	Processing version of data	ontime2	7797.2408944964	Sum of GTIs [s]
			ontime3	7797.4050545096	Sum of GTIs [s]
			ontime6	7797.1998544931	Sum of GTIs [s]
			ontime7	7797.3640145063	Sum of GTIs [s]
			l1events	1106050	Number of level 1 events

2.1.4 Events

	ccd 0	ccd 1	ccd 2	ccd 3	ccd 6	ccd 7		ccd 0	ccd 1	ccd 2	ccd 3	ccd 6	ccd 7
level 1 events	176507	177325	180858	182294	183860	205206	grade 0 events	59452	59335	61110	61409	61247	30371
rejected events	66787	66861	70477	70985	69362	61277		33%	33%	33%	33%	33%	14%
rejected %	37%	37%	38%	38%	37%	29%	grade 1 events	394	367	475	437	385	170
								0%	0%	0%	0%	0%	0%
							grade 2 events	19430	20173	18863	19192	20045	31319
								11%	11%	10%	10%	10%	15%
							grade 3 events	7312	7255	7249	7363	7265	13913
								4%	4%	4%	4%	3%	6%
							grade 4 events	7348	7257	7354	7587	7286	13698
								4%	4%	4%	4%	3%	6%
							grade 5 events	3791	3807	3464	4049	3997	10152
								2%	2%	1%	2%	2%	4%
							grade 6 events	16178	16444	15805	15758	18655	54628
								9%	9%	8%	8%	10%	26%
							grade 7 events	62602	62687	66538	66499	64980	50955
								35%	35%	36%	36%	35%	24%

2.2 Compared Parameters

Parameter	Planned	Actual
Instrument	ACIS	ACIS
Detector	ACIS-012367	ACIS-012367
Grating	NONE	NONE
Data mode	FAINT	FAINT
Observation mode	SECONDARY	SECONDARY
[deg] Pointing RA	0	319.9753428584157
[deg] Pointing Dec	0	12.98431303690758
[deg] Pointing Roll	0.0	180.305687389706
[mm] SIM focus pos	-0.782348	-0.7809083437167272
[mm] SIM defocus	0	0.7524282956875696
[mm] SIM translation stage pos	-233.592463	250.466033080201
[mm] SIM translation stage offset	0	-0.01005468664627074
[s] Observation start time (MET)	303161896.168866	303161895.14387
Observation start date	2007-08-10T19:38:16	2007-08-10T19:38:15
[s] Observation end time (MET)	303177240.419603	303177239.3946
Observation end date	2007-08-10T23:54:00	2007-08-10T23:53:59
Read mode	TIMED	TIMED

Parameter	Planned	Actual
Obspar format version number	7	7
Obspar file type	PREDICTED	ACTUAL
Obspar update status	NONE	UPDATED
On-chip summing requested	N	N
Subarray requested	NONE	NONE
Alternating exposures requested	N	N
[s] Primary exposure time	3.2	3.2

2.3 Star Slots

2.4 FID Slots

A Summary

A.1 Status

V&V Scientist	Jen Lauer
V&V Date (YYYY-MM-DD)	2012.05.02
V&V Edition	1
V&V Disposition and Status	OK
V&V Charge Time	7.7973640145063

A.2 Comments