

# V&V Reference Report

## L2 ASCDS Version : 8.4.4

Observation 58267 - L2 Version 3  
Chandra X-Ray Center

L2 Processing Date : Apr 29 2012

## Contents

<b>1</b>	<b>Front</b>	<b>2</b>
<b>2</b>	<b>OBI</b>	<b>3</b>
2.1	OBI . . . . .	3
2.1.1	Images . . . . .	3
2.1.2	Bias . . . . .	3
2.1.3	Parameters . . . . .	4
2.1.4	Events . . . . .	4
2.2	Compared Parameters . . . . .	5
2.3	Star Slots . . . . .	6
2.4	FID Slots . . . . .	6
<b>A</b>	<b>Summary</b>	<b>7</b>
A.1	Status . . . . .	7
A.2	Comments . . . . .	7

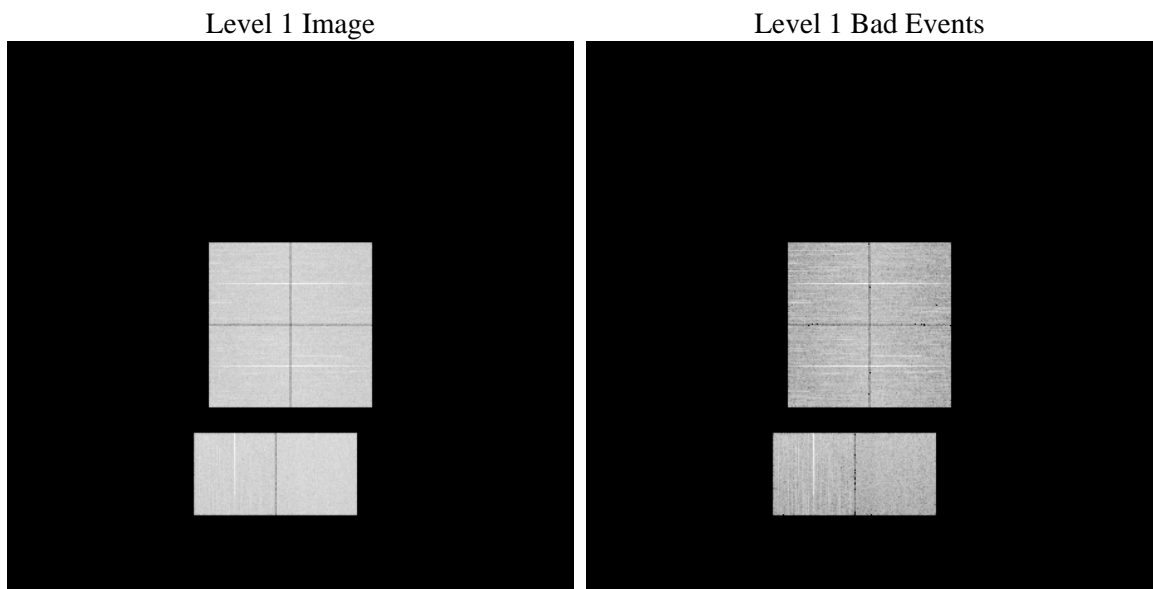
# 1 Front

seq_num	&#160	Sequence number
obs_id	58267	Observation id
title	ACIS-012367 diagnostics	Proposal title
observer	CHANDRA engineering request/realtime commanding	Principal investig
object	&#160	Source name
dtcycle	0	&#160
cycle	P	events from which exps? Prim/Second/Both
ra_targ	0.0	Observer's specified target RA [deg]
dec_targ	0.0	Observer's specified target Dec [deg]
ra_nom	305.0367573118	Nominal RA [deg]
dec_nom	-39.002215025944	Nominal Dec [deg]
roll_nom	322.69965047621	Nominal Roll [deg]
revision	3	Processing version of data
ontime	7769.5999711156	Sum of GTIs [s]
livetime	7671.2166179899	Livetime [s]
ontime0	7769.5999711156	Sum of GTIs [s]
ontime1	7769.5999711156	Sum of GTIs [s]
ontime2	7769.5999711156	Sum of GTIs [s]
ontime3	7769.5999711156	Sum of GTIs [s]
ontime6	7769.5999711156	Sum of GTIs [s]
ontime7	7769.5999711156	Sum of GTIs [s]
l2events	669107	Number of level 2 events

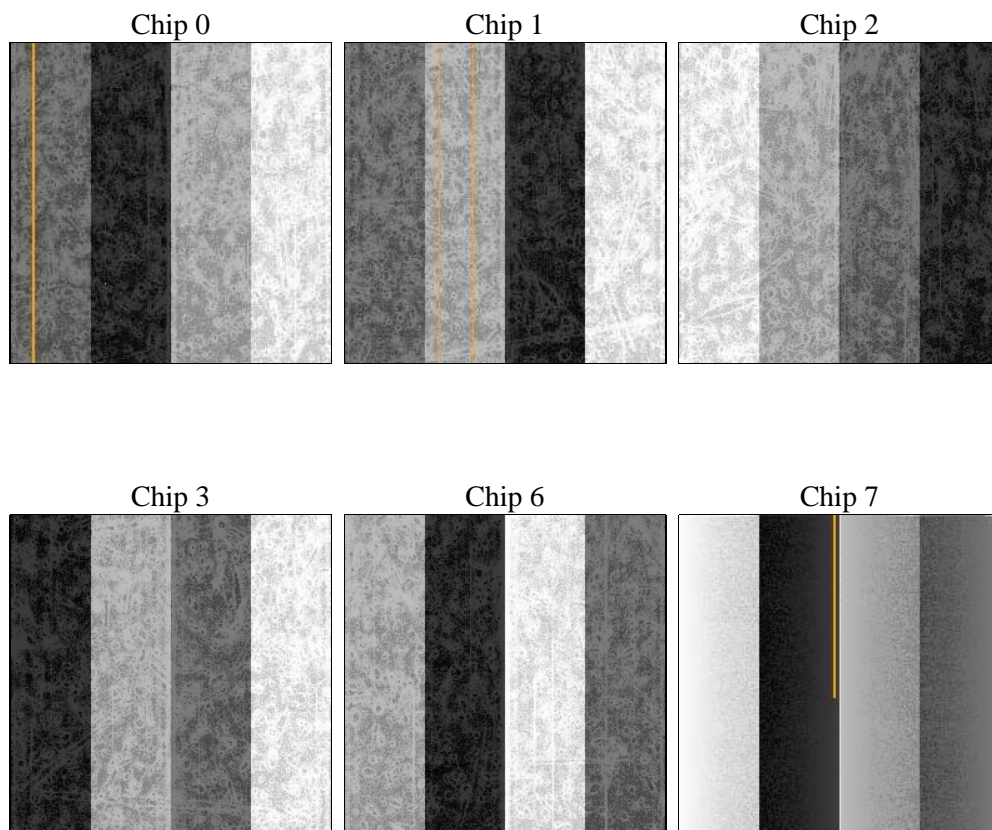
## 2 OBI

### 2.1 OBI

#### 2.1.1 Images



#### 2.1.2 Bias



### 2.1.3 Parameters

obi_num	0	Obi number	sched_exp_time	6420	[s] Scheduled observation exposure time
ascdsver	8.4.4	Processing system revision	ontime	7769.5999711156	Sum of GTIs [s]
caldsver	4.4.9	&#160	ontime0	7769.5999711156	Sum of GTIs [s]
date	2012-04-29T14:18:47	Date and time of file creation	ontime1	7769.5999711156	Sum of GTIs [s]
revision	3	Processing version of data	ontime2	7769.5999711156	Sum of GTIs [s]
			ontime3	7769.5999711156	Sum of GTIs [s]
			ontime6	7769.5999711156	Sum of GTIs [s]
			ontime7	7769.5999711156	Sum of GTIs [s]
			l1events	1114625	Number of level 1 events

### 2.1.4 Events

	ccd 0	ccd 1	ccd 2	ccd 3	ccd 6	ccd 7		ccd 0	ccd 1	ccd 2	ccd 3	ccd 6	ccd 7
level 1 events	178357	177675	182792	182687	188061	205053	grade 0 events	60237	59845	61884	62127	62234	29582
rejected events	67681	66013	71180	70127	72035	61990		33%	33%	33%	34%	33%	14%
rejected %	37%	37%	38%	38%	38%	30%	grade 1 events	420	378	461	469	394	164
								0%	0%	0%	0%	0%	0%
							grade 2 events	19656	20363	18954	19589	20235	30889
								11%	11%	10%	10%	10%	15%
							grade 3 events	7420	7294	7419	7661	7403	13650
								4%	4%	4%	4%	3%	6%
							grade 4 events	7130	7492	7530	7576	7453	13471
								3%	4%	4%	4%	3%	6%
							grade 5 events	3717	3883	3580	4142	4110	10084
								2%	2%	1%	2%	2%	4%
							grade 6 events	16596	17063	16215	15968	19148	55963
								9%	9%	8%	8%	10%	27%
							grade 7 events	63181	61357	66749	65155	67084	51250
								35%	34%	36%	35%	35%	24%

## 2.2 Compared Parameters

Parameter	Planned	Actual	Parameter	Planned	Actual
Instrument	ACIS	ACIS	Obspar format version number	7	7
Detector	ACIS-012367	ACIS-012367	Obspar file type	PREDICTED	ACTUAL
Grating	NONE	NONE	Obspar update status	OVERRIDE	OVERRIDE
Data mode	FAINT	FAINT	Number of optional ACIS chips dropped	0	0
Observation mode	SECONDARY	SECONDARY	On-chip summing requested	N	N
[deg] Pointing RA	305.0367579225552	305.0367573117958	Subarray requested	NONE	NONE
[deg] Pointing Dec	-39.00221495209494	-39.00221502594423	Alternating exposures requested	N	N
[deg] Pointing Roll	322.6996508456716	322.699650476212	[s] Primary exposure time	3.2	3.2
[mm] SIM focus pos	-0.78090834371673	-0.78090834371673			
[mm] SIM defocus	0.7524282194390134	0.7524282194390134			
[mm] SIM translation stage pos	250.4635187649	250.4635187649			
[mm] SIM translation stage offset	-0.007542945905271381	-0.007542945905271381			
[s] Observation start time (MET)	303388894.729762	303388894.729762			
Observation start date	2007-08-13T11:12:00	2007-08-13T10:41:34			
[s] Observation end time (MET)	303398411.445289	303398411.445289			
Observation end date	2007-08-13T12:59:00	2007-08-13T13:20:11			
Read mode	TIMED	TIMED			

## **2.3 Star Slots**

## **2.4 FID Slots**

## **A Summary**

### **A.1 Status**

V&V Scientist	Jen Lauer
V&V Date (YYYY-MM-DD)	2012.05.02
V&V Edition	1
V&V Disposition and Status	OK
V&V Charge Time	7.7695999711156

### **A.2 Comments**