

V&V Reference Report

L2 ASCDS Version : 8.4.4

Observation 58250 - L2 Version 2
Chandra X-Ray Center

L2 Processing Date : Apr 30 2012

Contents

1	Front	2
2	OBI	3
2.1	OBI	3
2.1.1	Images	3
2.1.2	Bias	3
2.1.3	Parameters	4
2.1.4	Events	4
2.2	Compared Parameters	5
2.3	Star Slots	6
2.4	FID Slots	6
A	Summary	7
A.1	Status	7
A.2	Comments	7

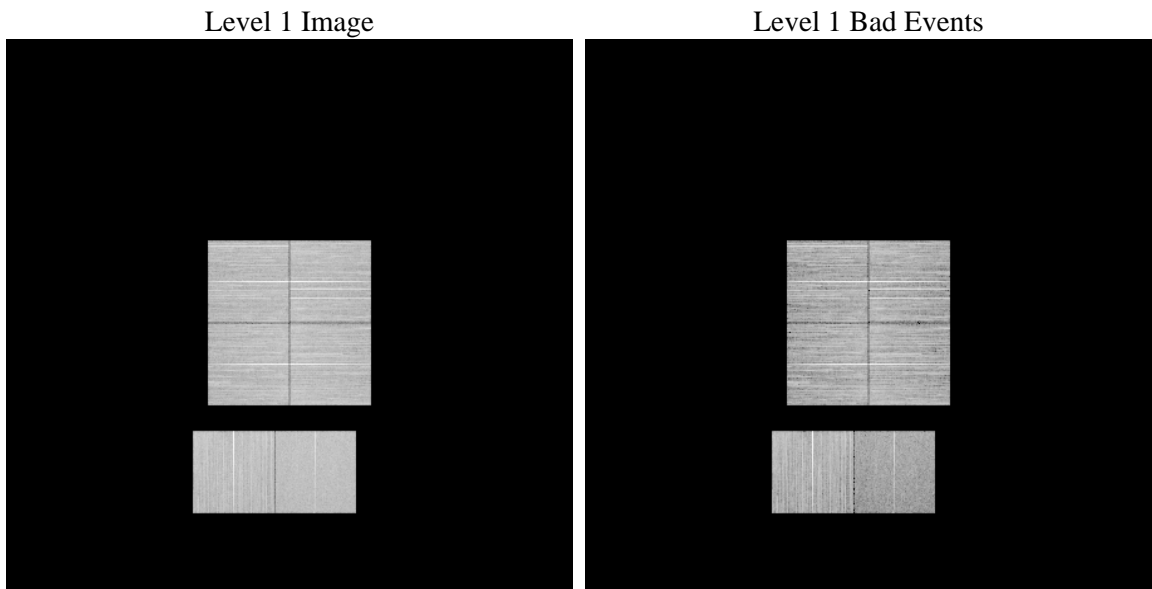
1 Front

seq_num	 	Sequence number
obs_id	58250	Observation id
title	ACIS-012367 diagnostics	Proposal title
observer	CHANDRA engineering request/realtime commanding	Principal investig
object	 	Source name
dtcycle	0	
cycle	P	events from which exps? Prim/Second/Both
ra_targ	0.0	Observer's specified target RA [deg]
dec_targ	0.0	Observer's specified target Dec [deg]
ra_nom	329.9780391659	Nominal RA [deg]
dec_nom	17.480373733314	Nominal Dec [deg]
roll_nom	190.21660378114	Nominal Roll [deg]
revision	2	Processing version of data
ontime	7794.0648277402	Sum of GTIs [s]
livetime	7695.3716858689	Livetime [s]
ontime0	6092.5822256804	Sum of GTIs [s]
ontime1	6267.6368439794	Sum of GTIs [s]
ontime2	6005.1575058103	Sum of GTIs [s]
ontime3	6105.4638186693	Sum of GTIs [s]
ontime6	6424.257504344	Sum of GTIs [s]
ontime7	7794.0648277402	Sum of GTIs [s]
l2events	558526	Number of level 2 events

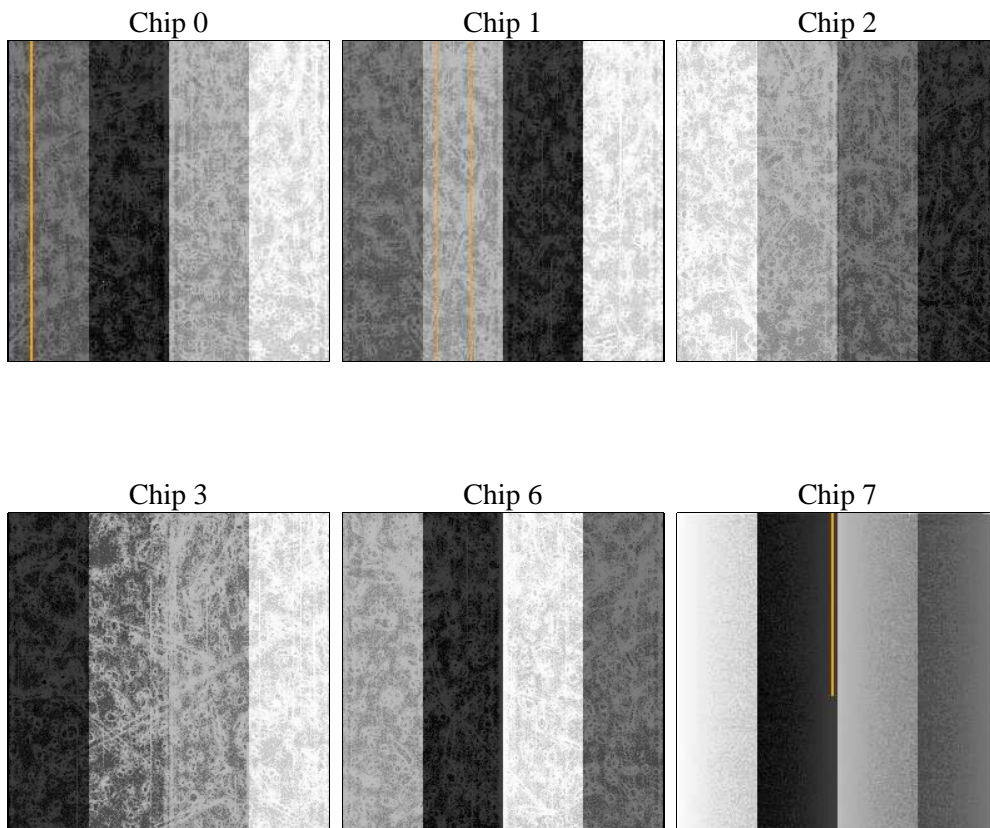
2 OBI

2.1 OBI

2.1.1 Images



2.1.2 Bias



2.1.3 Parameters

obi_num	0	Obi number	sched_exp_time	0.0	[s] Scheduled observation exposure time
ascdsver	8.4.4	Processing system revision	ontime	7794.0648277402	Sum of GTIs [s]
caldsver	4.4.9	 	ontime0	6092.5822256804	Sum of GTIs [s]
date	2012-04-30T03:16:05	Date and time of file creation	ontime1	6267.6368439794	Sum of GTIs [s]
revision	2	Processing version of data	ontime2	6005.1575058103	Sum of GTIs [s]
			ontime3	6105.4638186693	Sum of GTIs [s]
			ontime6	6424.257504344	Sum of GTIs [s]
			ontime7	7794.0648277402	Sum of GTIs [s]
			l1events	1409401	Number of level 1 events

2.1.4 Events

	ccd 0	ccd 1	ccd 2	ccd 3	ccd 6	ccd 7		ccd 0	ccd 1	ccd 2	ccd 3	ccd 6	ccd 7
level 1 events	225549	237742	226776	235940	249130	234264	grade 0 events	46128	46799	46208	47522	49992	29450
rejected events	139699	149318	142344	149314	154376	86628		20%	19%	20%	20%	20%	12%
rejected %	61%	62%	62%	63%	61%	36%	grade 1 events	325	290	391	382	299	161
								0%	0%	0%	0%	0%	0%
							grade 2 events	15885	16674	15095	15374	17743	35893
								7%	7%	6%	6%	7%	15%
							grade 3 events	5514	5601	5535	5649	5850	13762
								2%	2%	2%	2%	2%	5%
							grade 4 events	5688	5770	5584	5734	6003	13440
								2%	2%	2%	2%	2%	5%
							grade 5 events	2872	3113	2710	3314	3406	10231
								1%	1%	1%	1%	1%	4%
							grade 6 events	12635	13580	12010	12347	15218	55091
								5%	5%	5%	5%	6%	23%
							grade 7 events	136502	145915	139243	145618	150619	76236
								60%	61%	61%	61%	60%	32%

2.2 Compared Parameters

Parameter	Planned	Actual
Instrument	ACIS	ACIS
Detector	ACIS-012367	ACIS-012367
Grating	NONE	NONE
Data mode	FAINT	FAINT
Observation mode	SECONDARY	SECONDARY
[deg] Pointing RA	0	329.9780391658982
[deg] Pointing Dec	0	17.48037373331363
[deg] Pointing Roll	0.0	190.2166037811357
[mm] SIM focus pos	-0.782348	-0.6828225247311905
[mm] SIM defocus	0	0.8505141146731063
[mm] SIM translation stage pos	-233.592463	250.4635187648994
[mm] SIM translation stage offset	0	-0.007540371344731511
[s] Observation start time (MET)	304532120.33469	304532119.30968
Observation start date	2007-08-26T16:15:20	2007-08-26T16:15:19
[s] Observation end time (MET)	304542185.835174	304542184.81017
Observation end date	2007-08-26T19:03:06	2007-08-26T19:03:04
Read mode	TIMED	TIMED

Parameter	Planned	Actual
Obspar format version number	7	7
Obspar file type	PREDICTED	ACTUAL
Obspar update status	NONE	UPDATED
On-chip summing requested	N	N
Subarray requested	NONE	NONE
Alternating exposures requested	N	N
[s] Primary exposure time	3.2	3.2

2.3 Star Slots

2.4 FID Slots

A Summary

A.1 Status

V&V Scientist	Jen Lauer
V&V Date (YYYY-MM-DD)	2012.05.02
V&V Edition	1
V&V Disposition and Status	OK
V&V Charge Time	7.7940648277402

A.2 Comments