

V&V Reference Report

L2 ASCDS Version : 8.4.4

Observation 58180 - L2 Version 2
Chandra X-Ray Center

L2 Processing Date : May 2 2012

Contents

1	Front	2
2	OBI	3
2.1	OBI	3
2.1.1	Images	3
2.1.2	Bias	3
2.1.3	Parameters	4
2.1.4	Events	4
2.2	Compared Parameters	5
2.3	Star Slots	6
2.4	FID Slots	6
A	Summary	7
A.1	Status	7
A.2	Comments	7

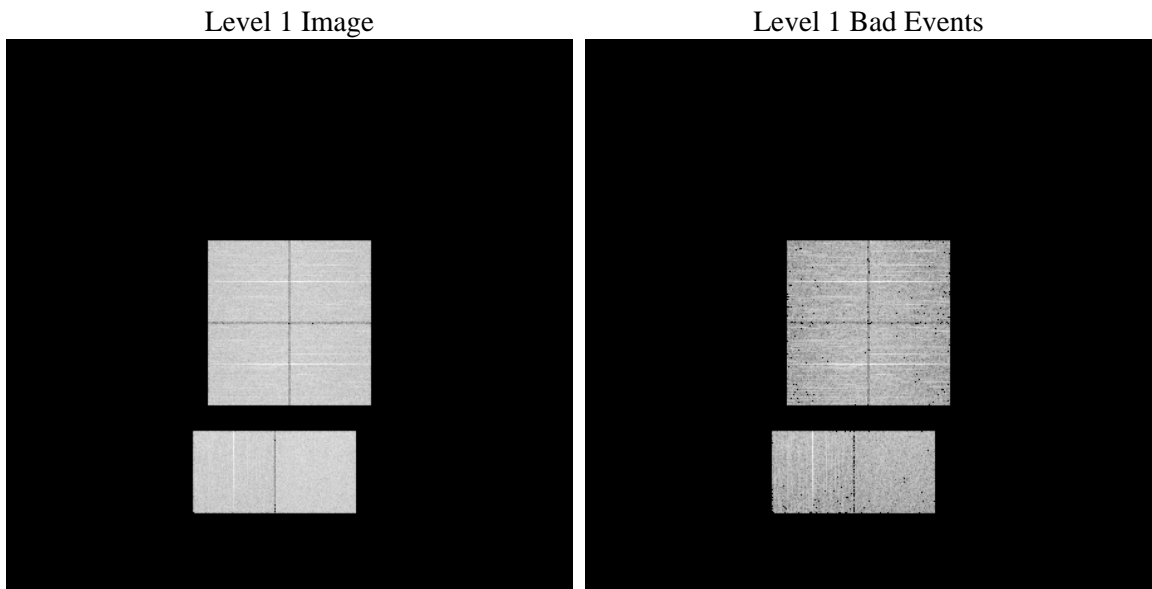
1 Front

seq_num	 	Sequence number
obs_id	58180	Observation id
title	ACIS-012367 diagnostics	Proposal title
observer	CHANDRA engineering request/realtime commanding	Principal investig
object	 	Source name
dtcycle	0	
cycle	P	events from which exps? Prim/Second/Both
ra_targ	0.0	Observer's specified target RA [deg]
dec_targ	0.0	Observer's specified target Dec [deg]
ra_nom	277.01729242109	Nominal RA [deg]
dec_nom	9.9815798839375	Nominal Dec [deg]
roll_nom	274.13676615358	Nominal Roll [deg]
revision	2	Processing version of data
ontime	4255.3559925556	Sum of GTIs [s]
livetime	4201.4721127101	Livetime [s]
ontime0	4255.3149525523	Sum of GTIs [s]
ontime1	4255.273912549	Sum of GTIs [s]
ontime2	4255.2328725457	Sum of GTIs [s]
ontime3	4255.3970325589	Sum of GTIs [s]
ontime6	4255.1918325424	Sum of GTIs [s]
ontime7	4255.3559925556	Sum of GTIs [s]
l2events	351116	Number of level 2 events

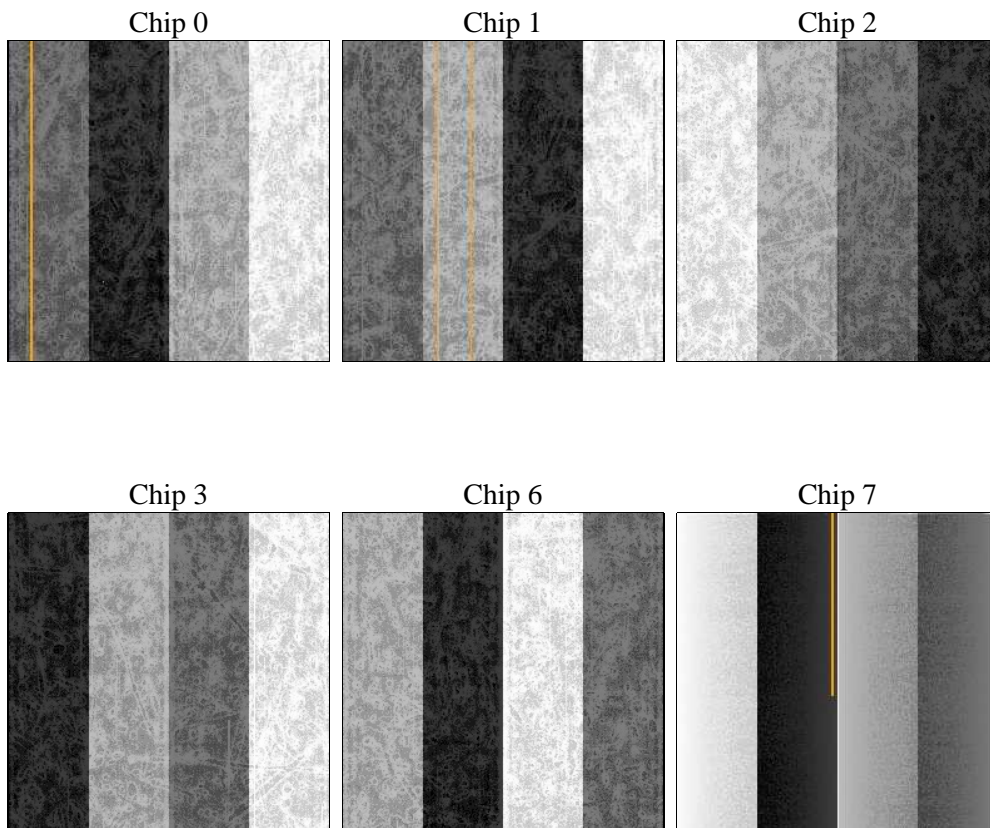
2 OBI

2.1 OBI

2.1.1 Images



2.1.2 Bias



2.1.3 Parameters

obi_num	0	Obi number	sched_exp_time	0.0	[s] Scheduled observation exposure time
ascdsver	8.4.4	Processing system revision	ontime	4255.3559925556	Sum of GTIs [s]
caldbver	4.4.9	 	ontime0	4255.3149525523	Sum of GTIs [s]
date	2012-05-02T10:04:40	Date and time of file creation	ontime1	4255.273912549	Sum of GTIs [s]
revision	2	Processing version of data	ontime2	4255.2328725457	Sum of GTIs [s]
			ontime3	4255.3970325589	Sum of GTIs [s]
			ontime6	4255.1918325424	Sum of GTIs [s]
			ontime7	4255.3559925556	Sum of GTIs [s]
			l1events	591404	Number of level 1 events

2.1.4 Events

	ccd 0	ccd 1	ccd 2	ccd 3	ccd 6	ccd 7		ccd 0	ccd 1	ccd 2	ccd 3	ccd 6	ccd 7
level 1 events	94153	94706	97067	96905	98376	110197	grade 0 events	31162	31223	32303	32366	32148	15616
rejected events	36407	36314	38370	38336	37725	33956		33%	32%	33%	33%	32%	14%
rejected %	38%	38%	39%	39%	38%	30%	grade 1 events	216	202	253	239	191	103
								0%	0%	0%	0%	0%	0%
							grade 2 events	10282	10638	9908	9982	10731	16486
								10%	11%	10%	10%	10%	14%
							grade 3 events	3916	3888	4052	3966	3884	7357
								4%	4%	4%	4%	3%	6%
							grade 4 events	3791	3834	3935	3931	3880	7303
								4%	4%	4%	4%	3%	6%
							grade 5 events	1978	2029	1857	2178	2287	5643
								2%	2%	1%	2%	2%	5%
							grade 6 events	8595	8809	8499	8324	10008	29479
								9%	9%	8%	8%	10%	26%
							grade 7 events	34213	34083	36260	35919	35247	28210
								36%	35%	37%	37%	35%	25%

2.2 Compared Parameters

Parameter	Planned	Actual	Parameter	Planned	Actual
Instrument	ACIS	ACIS	Obspar format version number	7	7
Detector	ACIS-012367	ACIS-012367	Obspar file type	PREDICTED	ACTUAL
Grating	NONE	NONE	Obspar update status	NONE	UPDATED
Data mode	FAINT	FAINT	On-chip summing requested	N	N
Observation mode	SECONDARY	SECONDARY	Subarray requested	NONE	NONE
[deg] Pointing RA	0	277.0172924210854	Alternating exposures requested	N	N
[deg] Pointing Dec	0	9.981579883937457	[s] Primary exposure time	3.2	3.2
[deg] Pointing Roll	0.0	274.1367661535829			
[mm] SIM focus pos	-0.782348	-0.6828225247311905			
[mm] SIM defocus	0	0.8505141146731063			
[mm] SIM translation stage pos	-233.592463	250.4635187648994			
[mm] SIM translation stage offset	0	-0.007540371344731511			
[s] Observation start time (MET)	307781540.641093	307781539.61608			
Observation start date	2007-10-03T06:52:21	2007-10-03T06:52:19			
[s] Observation end time (MET)	307788783.291442	307788782.26642			
Observation end date	2007-10-03T08:53:03	2007-10-03T08:53:02			
Read mode	TIMED	TIMED			

2.3 Star Slots

2.4 FID Slots

A Summary

A.1 Status

V&V Scientist	Jen Lauer
V&V Date (YYYY-MM-DD)	2012.05.04
V&V Edition	1
V&V Disposition and Status	OK
V&V Charge Time	4.2553559925556

A.2 Comments