

V&V Reference Report

L2 ASCDS Version : 8.4.4

Observation 58108 - L2 Version 2
Chandra X-Ray Center

L2 Processing Date : May 5 2012

Contents

1	Front	2
2	OBI	3
2.1	OBI	3
2.1.1	Images	3
2.1.2	Bias	3
2.1.3	Parameters	4
2.1.4	Events	4
2.2	Compared Parameters	5
2.3	Star Slots	6
2.4	FID Slots	6
A	Summary	7
A.1	Status	7
A.2	Comments	7

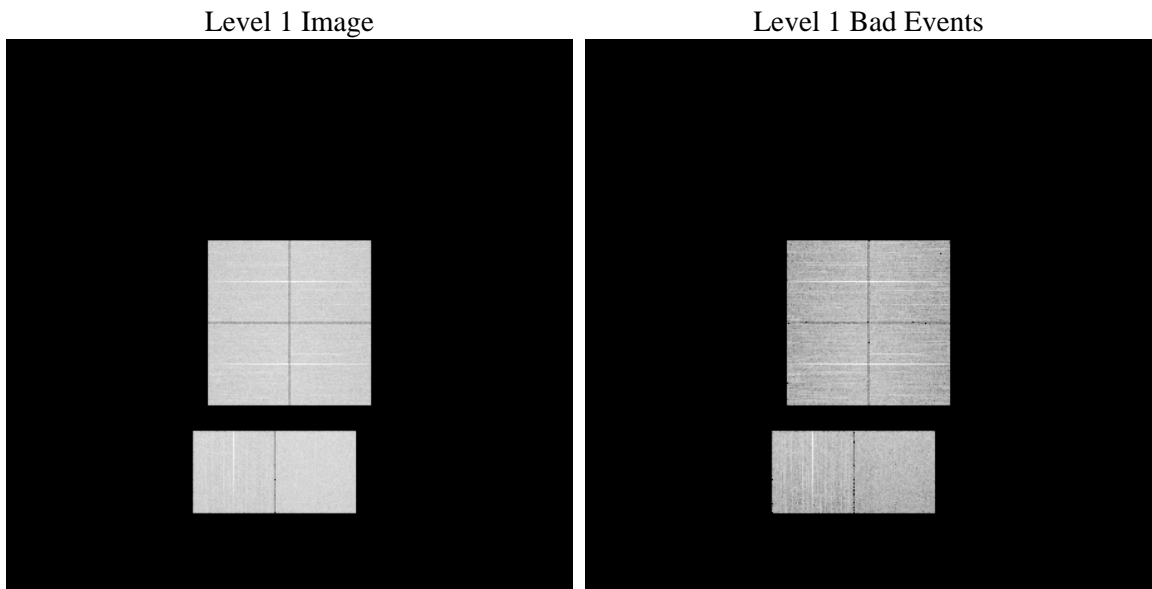
1 Front

seq_num	 	Sequence number
obs_id	58108	Observation id
title	ACIS-012367 diagnostics	Proposal title
observer	CHANDRA engineering request/realtime commanding	Principal investig
object	 	Source name
dtcycle	0	
cycle	P	events from which exps? Prim/Second/Both
ra_targ	0.0	Observer's specified target RA [deg]
dec_targ	0.0	Observer's specified target Dec [deg]
ra_nom	36.006903885277	Nominal RA [deg]
dec_nom	36.569999653766	Nominal Dec [deg]
roll_nom	244.14580159599	Nominal Roll [deg]
revision	2	Processing version of data
ontime	8271.999969244	Sum of GTIs [s]
livetime	8167.254924833	Livetime [s]
ontime0	8268.7589789629	Sum of GTIs [s]
ontime1	8271.999969244	Sum of GTIs [s]
ontime2	8271.999969244	Sum of GTIs [s]
ontime3	8271.999969244	Sum of GTIs [s]
ontime6	8271.999969244	Sum of GTIs [s]
ontime7	8271.999969244	Sum of GTIs [s]
l2events	659704	Number of level 2 events

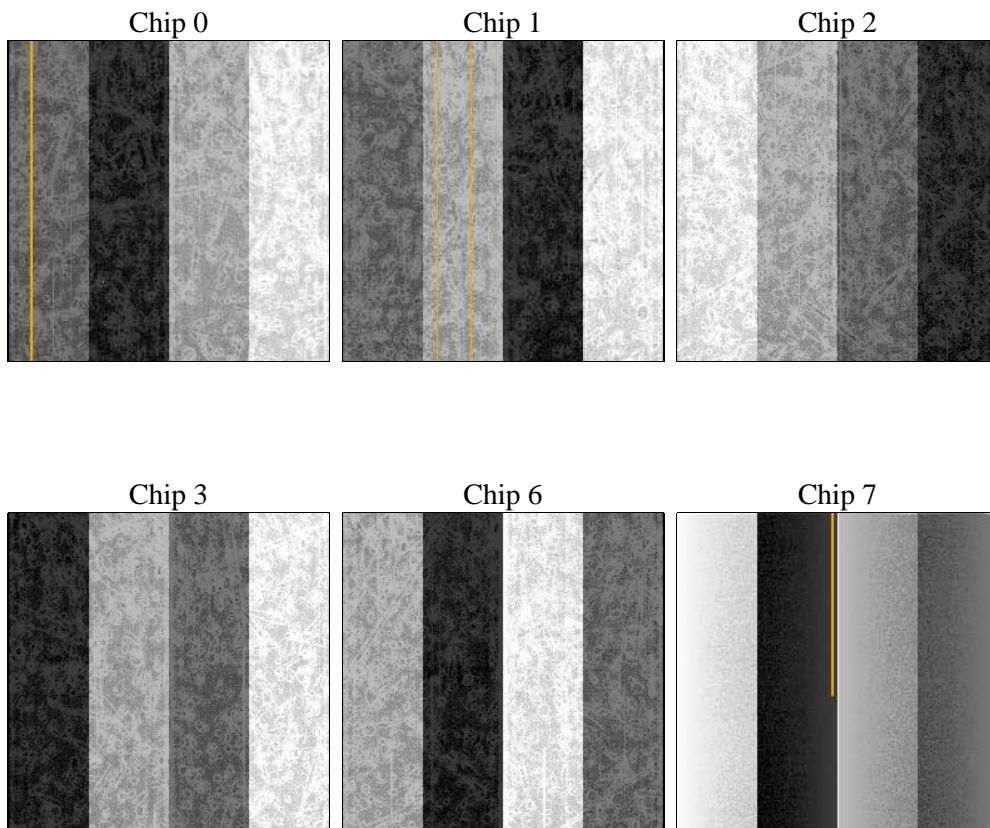
2 OBI

2.1 OBI

2.1.1 Images



2.1.2 Bias



2.1.3 Parameters

obi_num	0	Obi number	sched_exp_time	0.0	[s] Scheduled observation exposure time
ascdsver	8.4.4	Processing system revision	ontime	8271.999969244	Sum of GTIs [s]
caldsver	4.4.9	 	ontime0	8268.7589789629	Sum of GTIs [s]
date	2012-05-05T08:11:51	Date and time of file creation	ontime1	8271.999969244	Sum of GTIs [s]
revision	2	Processing version of data	ontime2	8271.999969244	Sum of GTIs [s]
			ontime3	8271.999969244	Sum of GTIs [s]
			ontime6	8271.999969244	Sum of GTIs [s]
			ontime7	8271.999969244	Sum of GTIs [s]
			l1events	1117912	Number of level 1 events

2.1.4 Events

	ccd 0	ccd 1	ccd 2	ccd 3	ccd 6	ccd 7		ccd 0	ccd 1	ccd 2	ccd 3	ccd 6	ccd 7
level 1 events	176710	178236	184127	181758	189524	207557	grade 0 events	58765	58252	60732	61258	60707	29178
rejected events	68104	68422	73997	71408	75600	64609		33%	32%	32%	33%	32%	14%
rejected %	38%	38%	40%	39%	39%	31%	grade 1 events	370	367	453	456	354	162
								0%	0%	0%	0%	0%	0%
							grade 2 events	19312	20121	18919	18805	19986	30974
								10%	11%	10%	10%	10%	14%
							grade 3 events	7275	7331	7464	7477	7233	13511
								4%	4%	4%	4%	3%	6%
							grade 4 events	7062	7314	7278	7262	7189	13479
								3%	4%	3%	3%	3%	6%
							grade 5 events	3941	4107	3737	4283	4342	10520
								2%	2%	2%	2%	2%	5%
							grade 6 events	16230	16831	15794	15591	18850	55854
								9%	9%	8%	8%	9%	26%
							grade 7 events	63755	63913	69750	66626	70863	53879
								36%	35%	37%	36%	37%	25%

2.2 Compared Parameters

Parameter	Planned	Actual
Instrument	ACIS	ACIS
Detector	ACIS-012367	ACIS-012367
Grating	NONE	NONE
Data mode	FAINT	FAINT
Observation mode	SECONDARY	SECONDARY
[deg] Pointing RA	0	36.00690388527713
[deg] Pointing Dec	0	36.5699996537662
[deg] Pointing Roll	0.0	244.1458015959871
[mm] SIM focus pos	-0.782348	-0.7809083437167272
[mm] SIM defocus	0	0.7524282956875696
[mm] SIM translation stage pos	-233.592463	250.466033080201
[mm] SIM translation stage offset	0	-0.01005468664627074
[s] Observation start time (MET)	312569272.822071	312569271.79708
Observation start date	2007-11-27T16:47:53	2007-11-27T16:47:51
[s] Observation end time (MET)	312593257.82323	312593256.79824
Observation end date	2007-11-27T23:27:38	2007-11-27T23:27:36
Read mode	TIMED	TIMED

Parameter	Planned	Actual
Obspar format version number	7	7
Obspar file type	PREDICTED	ACTUAL
Obspar update status	NONE	UPDATED
On-chip summing requested	N	N
Subarray requested	NONE	NONE
Alternating exposures requested	N	N
[s] Primary exposure time	3.2	3.2

2.3 Star Slots

2.4 FID Slots

A Summary

A.1 Status

V&V Scientist	Jen Lauer
V&V Date (YYYY-MM-DD)	2012.05.07
V&V Edition	1
V&V Disposition and Status	OK
V&V Charge Time	8.271999969244

A.2 Comments