

V&V Reference Report

L2 ASCDS Version : 8.4.3.1

Observation 58900 - L2 Version 2
Chandra X-Ray Center

L2 Processing Date : Apr 4 2012

Contents

1	Front	2
2	OBI	3
2.1	OBI	3
2.1.1	Images	3
2.1.2	Bias	3
2.1.3	Parameters	4
2.1.4	Events	4
2.2	Compared Parameters	5
2.3	Star Slots	6
2.4	FID Slots	6
A	Summary	7
A.1	Status	7
A.2	Comments	7

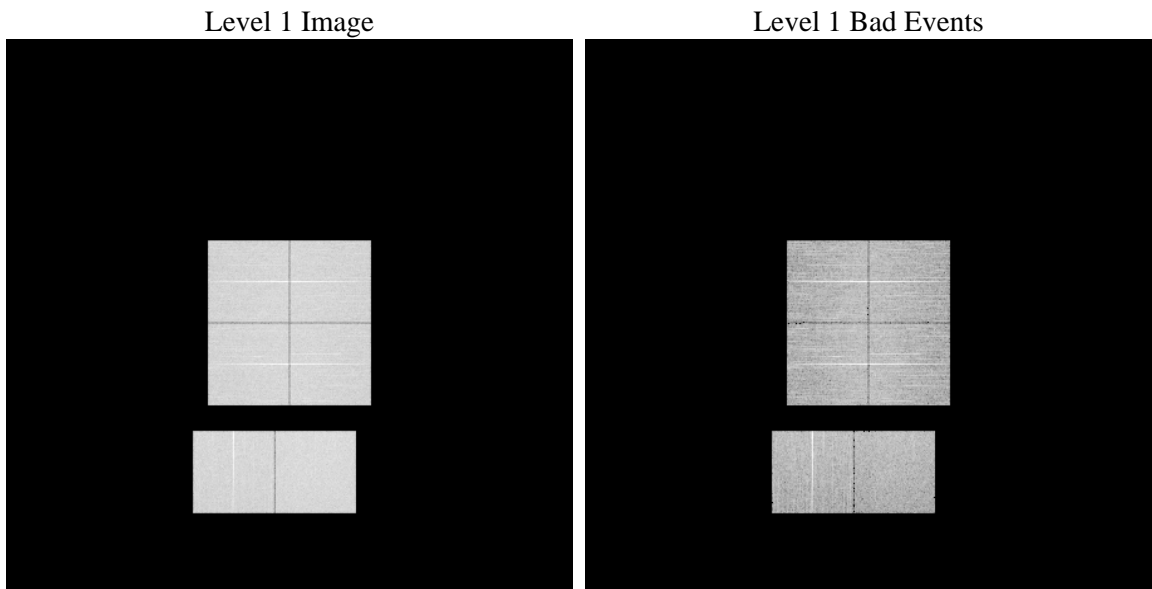
1 Front

seq_num	 	Sequence number
obs_id	58900	Observation id
title	ACIS-012367 diagnostics	Proposal title
observer	CHANDRA engineering request/realtime commanding	Principal investig
object	 	Source name
dtcycle	0	
cycle	P	events from which exps? Prim/Second/Both
ra_targ	0.0	Observer's specified target RA [deg]
dec_targ	0.0	Observer's specified target Dec [deg]
ra_nom	304.97242072833	Nominal RA [deg]
dec_nom	-4.9919750419706	Nominal Dec [deg]
roll_nom	130.83417767845	Nominal Roll [deg]
revision	2	Processing version of data
ontime	8275.1999691725	Sum of GTIs [s]
livetime	8170.4144044356	Livetime [s]
ontime0	8275.1999691725	Sum of GTIs [s]
ontime1	8271.9589589834	Sum of GTIs [s]
ontime2	8275.1999691725	Sum of GTIs [s]
ontime3	8268.718078196	Sum of GTIs [s]
ontime6	8275.1999691725	Sum of GTIs [s]
ontime7	8275.1999691725	Sum of GTIs [s]
l2events	897990	Number of level 2 events

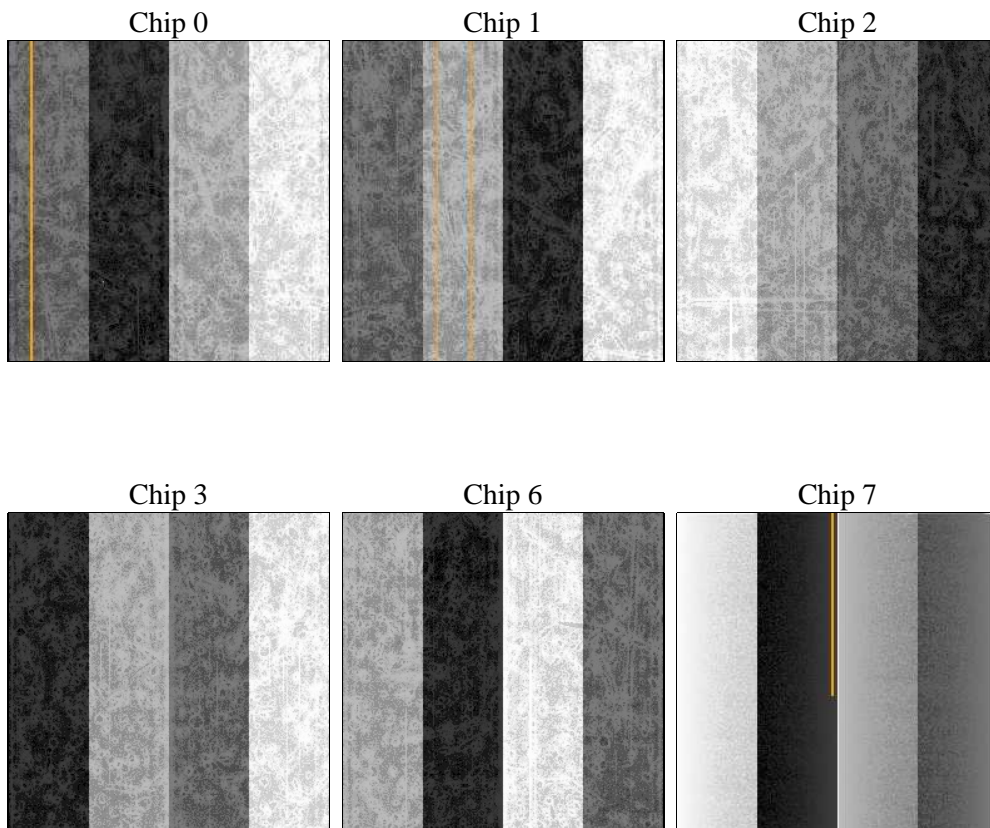
2 OBI

2.1 OBI

2.1.1 Images



2.1.2 Bias



2.1.3 Parameters

obi_num	1	Obi number	sched_exp_time	0.0	[s] Scheduled observation exposure time
ascdsver	8.4.3.1	Processing system revision	ontime	8275.1999691725	Sum of GTIs [s]
caldsver	4.4.9	 	ontime0	8275.1999691725	Sum of GTIs [s]
date	2012-04-04T20:43:12	Date and time of file creation	ontime1	8271.9589589834	Sum of GTIs [s]
revision	2	Processing version of data	ontime2	8275.1999691725	Sum of GTIs [s]
			ontime3	8268.718078196	Sum of GTIs [s]
			ontime6	8275.1999691725	Sum of GTIs [s]
			ontime7	8275.1999691725	Sum of GTIs [s]
			l1events	1367087	Number of level 1 events

2.1.4 Events

	ccd 0	ccd 1	ccd 2	ccd 3	ccd 6	ccd 7		ccd 0	ccd 1	ccd 2	ccd 3	ccd 6	ccd 7
level 1 events	220927	219578	225928	224916	229208	246530	grade 0 events	81903	81761	84822	84089	84810	40647
rejected events	70560	68802	74040	73675	71627	62261		37%	37%	37%	37%	37%	16%
rejected %	31%	31%	32%	32%	31%	25%	grade 1 events	558	524	606	635	498	192
								0%	0%	0%	0%	0%	0%
							grade 2 events	26553	27097	25268	25792	27408	40292
								12%	12%	11%	11%	11%	16%
							grade 3 events	9910	9692	10180	10063	9951	17764
								4%	4%	4%	4%	4%	7%
							grade 4 events	9732	9651	9958	10052	9992	17671
								4%	4%	4%	4%	4%	7%
							grade 5 events	3797	4009	3655	4219	4309	10544
								1%	1%	1%	1%	1%	4%
							grade 6 events	22269	22575	21660	21245	25420	67895
								10%	10%	9%	9%	11%	27%
							grade 7 events	66205	64269	69779	68821	66820	51525
								29%	29%	30%	30%	29%	20%

2.2 Compared Parameters

Parameter	Planned	Actual
Instrument	ACIS	ACIS
Detector	ACIS-012367	ACIS-012367
Grating	NONE	NONE
Data mode	FAINT	FAINT
Observation mode	SECONDARY	SECONDARY
[deg] Pointing RA	0	304.9724207283296
[deg] Pointing Dec	0	-4.991975041970564
[deg] Pointing Roll	0.0	130.8341776784464
[mm] SIM focus pos	-0.782348	-0.6828225247311905
[mm] SIM defocus	0	0.8505141146731063
[mm] SIM translation stage pos	-233.592463	250.466033080201
[mm] SIM translation stage offset	0	-0.01005468664627074
[s] Observation start time (MET)	268246839.813467	268246838.78847
Observation start date	2006-07-02T17:00:40	2006-07-02T17:00:38
[s] Observation end time (MET)	268268149.564465	268268148.53947
Observation end date	2006-07-02T22:55:50	2006-07-02T22:55:48
Read mode	TIMED	TIMED

Parameter	Planned	Actual
Obspar format version number	7	7
Obspar file type	PREDICTED	ACTUAL
Obspar update status	NONE	UPDATED
On-chip summing requested	N	N
Subarray requested	NONE	NONE
Alternating exposures requested	N	N
[s] Primary exposure time	3.2	3.2

2.3 Star Slots

2.4 FID Slots

A Summary

A.1 Status

V&V Scientist	Jen Lauer
V&V Date (YYYY-MM-DD)	2012.04.05
V&V Edition	1
V&V Disposition and Status	OK
V&V Charge Time	8.2751999691725

A.2 Comments