

V&V Reference Report

L2 ASCDS Version : 8.4.3.1

Observation 58723 - L2 Version 2
Chandra X-Ray Center

L2 Processing Date : Apr 12 2012

Contents

1	Front	2
2	OBI	3
2.1	OBI	3
2.1.1	Images	3
2.1.2	Bias	3
2.1.3	Parameters	4
2.1.4	Events	4
2.2	Compared Parameters	5
2.3	Star Slots	6
2.4	FID Slots	6
A	Summary	7
A.1	Status	7
A.2	Comments	7

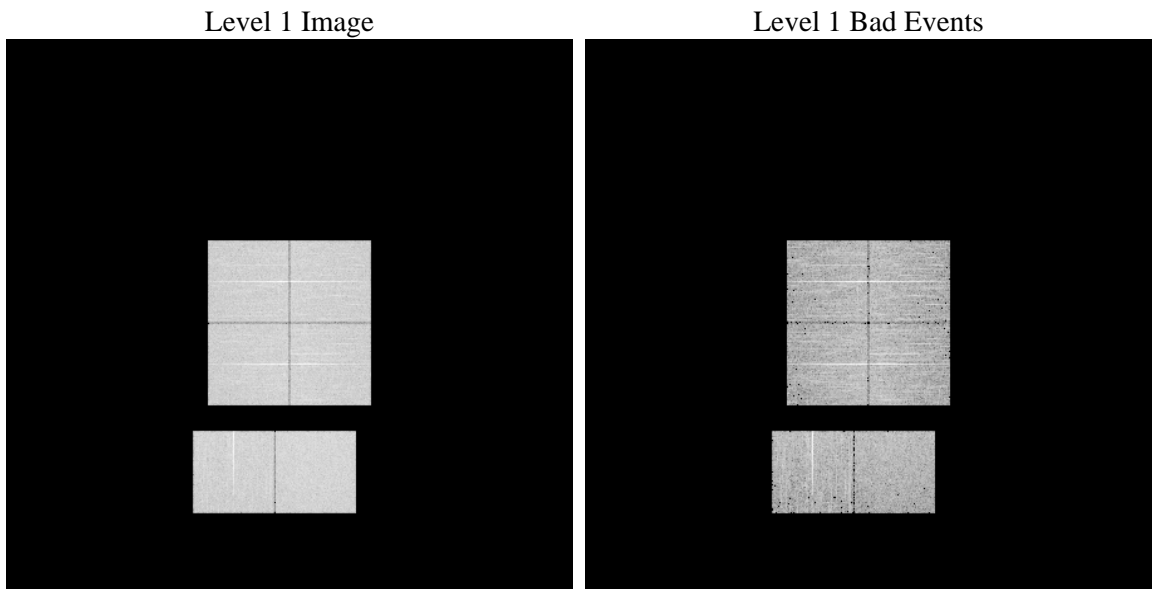
1 Front

seq_num	 	Sequence number
obs_id	58723	Observation id
title	ACIS-012367 diagnostics	Proposal title
observer	CHANDRA engineering request/realtime commanding	Principal investig
object	 	Source name
dtcycle	0	
cycle	P	events from which exps? Prim/Second/Both
ra_targ	0.0	Observer's specified target RA [deg]
dec_targ	0.0	Observer's specified target Dec [deg]
ra_nom	59.976868614165	Nominal RA [deg]
dec_nom	22.71911751683	Nominal Dec [deg]
roll_nom	105.30432325523	Nominal Roll [deg]
revision	2	Processing version of data
ontime	4559.9999830723	Sum of GTIs [s]
livetime	4502.2585175843	Livetime [s]
ontime0	4559.9999830723	Sum of GTIs [s]
ontime1	4559.9999830723	Sum of GTIs [s]
ontime2	4556.7590027452	Sum of GTIs [s]
ontime3	4559.9999830723	Sum of GTIs [s]
ontime6	4559.9999830723	Sum of GTIs [s]
ontime7	4559.9999830723	Sum of GTIs [s]
l2events	459168	Number of level 2 events

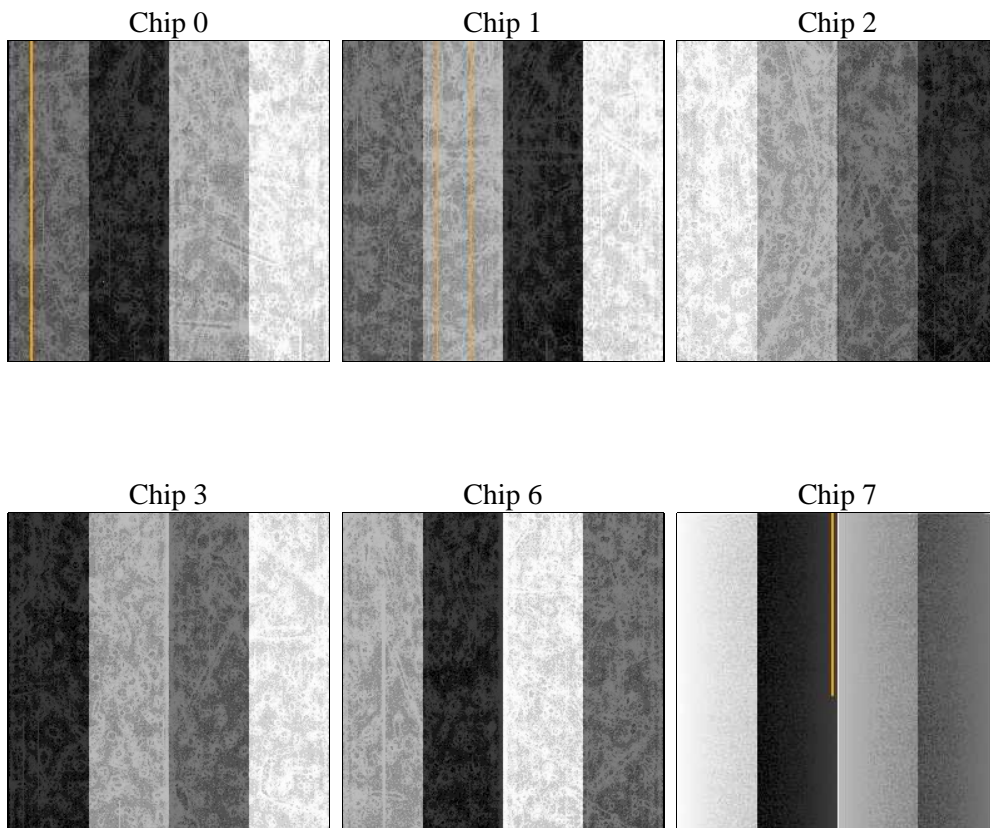
2 OBI

2.1 OBI

2.1.1 Images



2.1.2 Bias



2.1.3 Parameters

obi_num	1	Obi number	sched_exp_time	0.0	[s] Scheduled observation exposure time
ascdsver	8.4.3.1	Processing system revision	ontime	4559.9999830723	Sum of GTIs [s]
caldsver	4.4.9	 	ontime0	4559.9999830723	Sum of GTIs [s]
date	2012-04-12T10:19:14	Date and time of file creation	ontime1	4559.9999830723	Sum of GTIs [s]
revision	2	Processing version of data	ontime2	4556.7590027452	Sum of GTIs [s]
			ontime3	4559.9999830723	Sum of GTIs [s]
			ontime6	4559.9999830723	Sum of GTIs [s]
			ontime7	4559.9999830723	Sum of GTIs [s]
			l1events	731753	Number of level 1 events

2.1.4 Events

	ccd 0	ccd 1	ccd 2	ccd 3	ccd 6	ccd 7		ccd 0	ccd 1	ccd 2	ccd 3	ccd 6	ccd 7
level 1 events	117604	118465	120016	122009	122356	131303	grade 0 events	42766	42802	44097	44524	43880	20861
rejected events	41248	41263	42801	44054	41863	36954		36%	36%	36%	36%	35%	15%
rejected %	35%	34%	35%	36%	34%	28%	grade 1 events	297	274	328	327	240	90
								0%	0%	0%	0%	0%	0%
							grade 2 events	13649	14440	13280	13491	14458	21120
								11%	12%	11%	11%	11%	16%
							grade 3 events	5171	5058	5193	5156	5268	9284
								4%	4%	4%	4%	4%	7%
							grade 4 events	5040	4979	5192	5277	5156	9166
								4%	4%	4%	4%	4%	6%
							grade 5 events	2190	2337	2064	2470	2304	5717
								1%	1%	1%	2%	1%	4%
							grade 6 events	11454	11688	11261	11304	13467	36013
								9%	9%	9%	9%	11%	27%
							grade 7 events	37037	36887	38601	39460	37583	29052
								31%	31%	32%	32%	30%	22%

2.2 Compared Parameters

Parameter	Planned	Actual
Instrument	ACIS	ACIS
Detector	ACIS-012367	ACIS-012367
Grating	NONE	NONE
Data mode	FAINT	FAINT
Observation mode	SECONDARY	SECONDARY
[deg] Pointing RA	0	59.97686861416518
[deg] Pointing Dec	0	22.71911751682995
[deg] Pointing Roll	0.0	105.3043232552328
[mm] SIM focus pos	-0.782348	-0.7809083437167272
[mm] SIM defocus	0	0.7524282956875696
[mm] SIM translation stage pos	-233.592463	250.466033080201
[mm] SIM translation stage offset	0	-0.01005468664627074
[s] Observation start time (MET)	278300686.03586	278300685.01086
Observation start date	2006-10-27T01:44:46	2006-10-27T01:44:45
[s] Observation end time (MET)	278318385.736696	278318384.71169
Observation end date	2006-10-27T06:39:46	2006-10-27T06:39:44
Read mode	TIMED	TIMED

Parameter	Planned	Actual
Obspar format version number	7	7
Obspar file type	PREDICTED	ACTUAL
Obspar update status	NONE	UPDATED
On-chip summing requested	N	N
Subarray requested	NONE	NONE
Alternating exposures requested	N	N
[s] Primary exposure time	3.2	3.2

2.3 Star Slots

2.4 FID Slots

A Summary

A.1 Status

V&V Scientist	Beth Sundheim
V&V Date (YYYY-MM-DD)	2012.04.12
V&V Edition	1
V&V Disposition and Status	OK
V&V Charge Time	4.5599999830723

A.2 Comments