

V&V Reference Report

L2 ASCDS Version : 8.4.3.1

Observation 58700 - L2 Version 2
Chandra X-Ray Center

L2 Processing Date : Apr 13 2012

Contents

1	Front	2
2	OBI	3
2.1	OBI	3
2.1.1	Images	3
2.1.2	Bias	3
2.1.3	Parameters	4
2.1.4	Events	4
2.2	Compared Parameters	5
2.3	Star Slots	6
2.4	FID Slots	6
A	Summary	7
A.1	Status	7
A.2	Comments	7

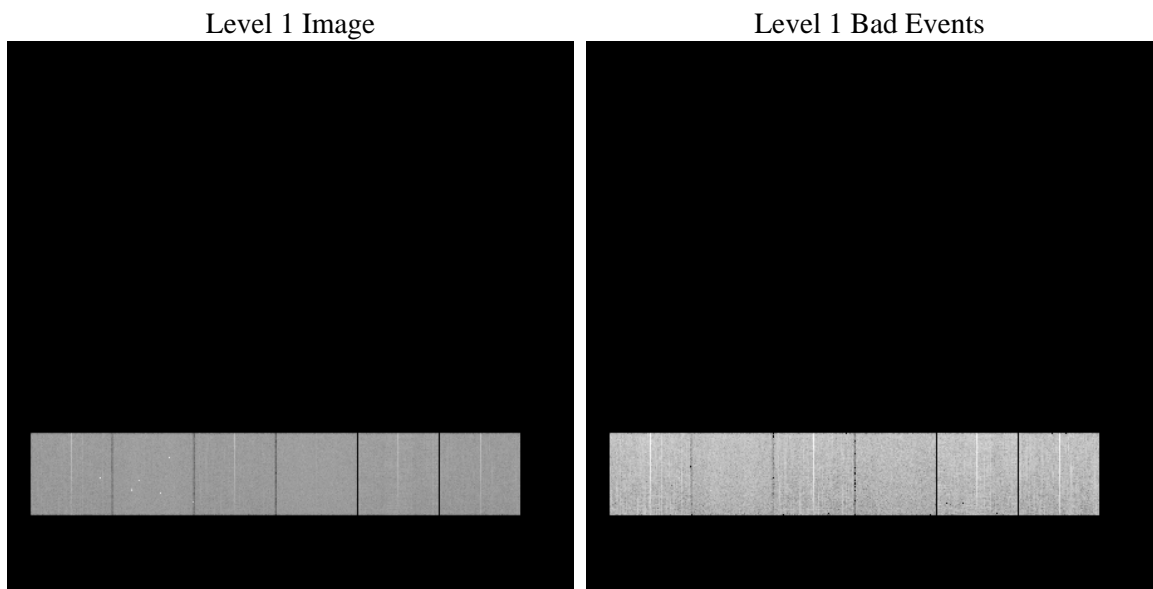
1 Front

seq_num	 	Sequence number
obs_id	58700	Observation id
title	ACIS-456789 diagnostics	Proposal title
observer	CHANDRA engineering request/realtime commanding	Principal investig
object	 	Source name
dtcycle	0	
cycle	P	events from which exps? Prim/Second/Both
ra_targ	0.0	Observer's specified target RA [deg]
dec_targ	0.0	Observer's specified target Dec [deg]
ra_nom	79.96941836266	Nominal RA [deg]
dec_nom	36.014159630054	Nominal Dec [deg]
roll_nom	117.15623672505	Nominal Roll [deg]
revision	2	Processing version of data
ontime	7788.7999710441	Sum of GTIs [s]
livetime	7690.1734959584	Livetime [s]
ontime4	7788.6781075597	Sum of GTIs [s]
ontime5	7788.7601875663	Sum of GTIs [s]
ontime6	7788.719147563	Sum of GTIs [s]
ontime7	7788.7999710441	Sum of GTIs [s]
ontime8	7788.6370675564	Sum of GTIs [s]
ontime9	7788.7999710441	Sum of GTIs [s]
l2events	800497	Number of level 2 events

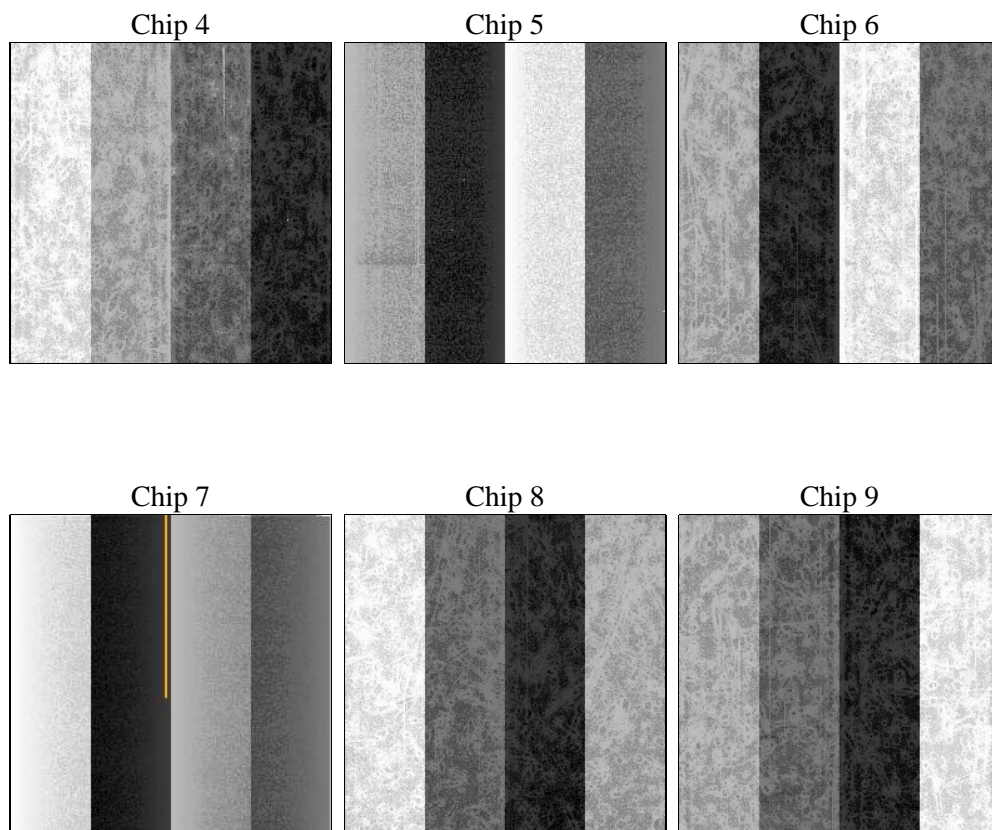
2 OBI

2.1 OBI

2.1.1 Images



2.1.2 Bias



2.1.3 Parameters

obi_num	0	Obi number	sched_exp_time	0.0	[s] Scheduled observation exposure time
ascdsver	8.4.3.1	Processing system revision	ontime	7788.7999710441	Sum of GTIs [s]
caldsver	4.4.9	 	ontime4	7788.6781075597	Sum of GTIs [s]
date	2012-04-13T16:36:21	Date and time of file creation	ontime5	7788.7601875663	Sum of GTIs [s]
revision	2	Processing version of data	ontime6	7788.719147563	Sum of GTIs [s]
			ontime7	7788.7999710441	Sum of GTIs [s]
			ontime8	7788.6370675564	Sum of GTIs [s]
			ontime9	7788.7999710441	Sum of GTIs [s]
			l1events	1266114	Number of level 1 events

2.1.4 Events

	ccd 4	ccd 5	ccd 6	ccd 7	ccd 8	ccd 9		ccd 4	ccd 5	ccd 6	ccd 7	ccd 8	ccd 9
level 1 events	203584	214756	203638	218578	222259	203299	grade 0 events	75403	27919	73995	35500	77957	72685
rejected events	74291	62322	66213	57118	74681	71149		37%	13%	36%	16%	35%	35%
rejected %	36%	29%	32%	26%	33%	34%	grade 1 events	695	228	392	160	480	490
								0%	0%	0%	0%	0%	0%
							grade 2 events	19797	56498	23947	35204	26227	22337
								9%	26%	11%	16%	11%	10%
							grade 3 events	8793	7316	8625	15427	9824	8590
								4%	3%	4%	7%	4%	4%
							grade 4 events	8672	7255	8690	15463	9842	8299
								4%	3%	4%	7%	4%	4%
							grade 5 events	3898	8533	3962	9620	4858	4321
								1%	3%	1%	4%	2%	2%
							grade 6 events	16691	53517	22232	59934	23789	20297
								8%	24%	10%	27%	10%	9%
							grade 7 events	69635	53490	61795	47270	69282	66280
								34%	24%	30%	21%	31%	32%

2.2 Compared Parameters

Parameter	Planned	Actual	Parameter	Planned	Actual
Instrument	ACIS	ACIS	Obspar format version number	7	7
Detector	ACIS-456789	ACIS-456789	Obspar file type	PREDICTED	ACTUAL
Grating	NONE	NONE	Obspar update status	NONE	UPDATED
Data mode	FAINT	FAINT	On-chip summing requested	N	N
Observation mode	SECONDARY	SECONDARY	Subarray requested	NONE	NONE
[deg] Pointing RA	0	79.96941836266018	Alternating exposures requested	N	N
[deg] Pointing Dec	0	36.01415963005354	[s] Primary exposure time	3.2	3.2
[deg] Pointing Roll	0.0	117.1562367250539			
[mm] SIM focus pos	-0.684267	-0.7809083437167272			
[mm] SIM defocus	0	0.7524282956875696			
[mm] SIM translation stage pos	-190.132523	250.466033080201			
[mm] SIM translation stage offset	0	-0.01005468664627074			
[s] Observation start time (MET)	280085606.770128	280085605.74514			
Observation start date	2006-11-16T17:33:27	2006-11-16T17:33:25			
[s] Observation end time (MET)	280105176.071052	280105175.04606			
Observation end date	2006-11-16T22:59:36	2006-11-16T22:59:35			
Read mode	TIMED	TIMED			

2.3 Star Slots

2.4 FID Slots

A Summary

A.1 Status

V&V Scientist	Beth Sundheim
V&V Date (YYYY-MM-DD)	2012.04.16
V&V Edition	1
V&V Disposition and Status	OK
V&V Charge Time	7.7887999710441

A.2 Comments