

# V&V Reference Report

## L2 ASCDS Version : 8.4.3.1

Observation 58690 - L2 Version 2  
Chandra X-Ray Center

L2 Processing Date : Apr 14 2012

## Contents

<b>1</b>	<b>Front</b>	<b>2</b>
<b>2</b>	<b>OBI</b>	<b>3</b>
2.1	OBI . . . . .	3
2.1.1	Images . . . . .	3
2.1.2	Bias . . . . .	3
2.1.3	Parameters . . . . .	4
2.1.4	Events . . . . .	4
2.2	Compared Parameters . . . . .	5
2.3	Star Slots . . . . .	6
2.4	FID Slots . . . . .	6
<b>A</b>	<b>Summary</b>	<b>7</b>
A.1	Status . . . . .	7
A.2	Comments . . . . .	7

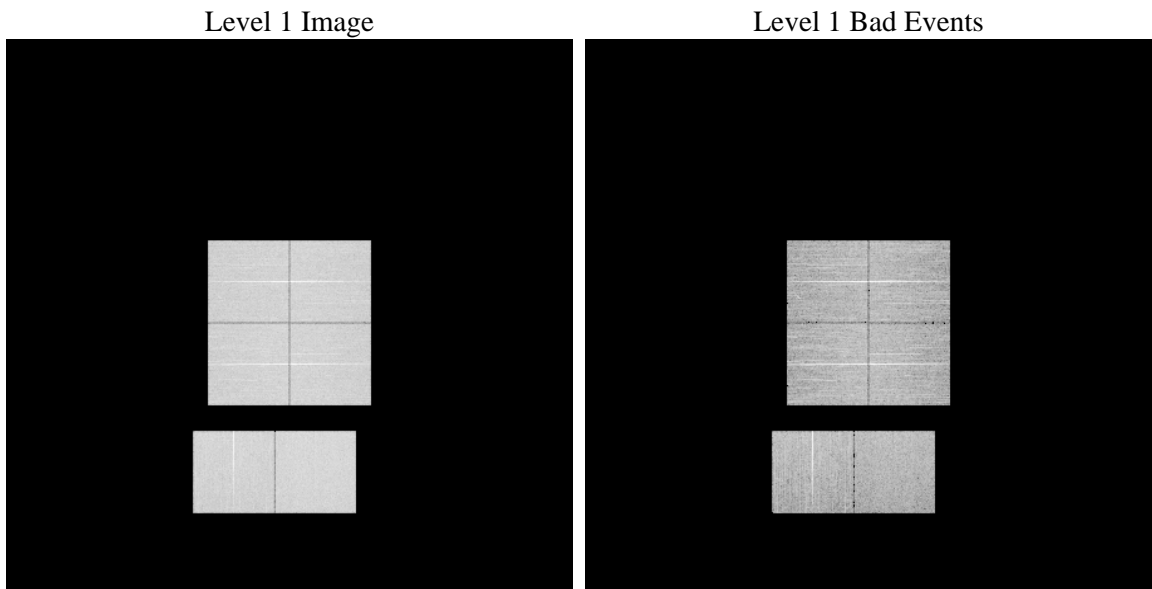
# 1 Front

seq_num	&#160	Sequence number
obs_id	58690	Observation id
title	ACIS-012367 diagnostics	Proposal title
observer	CHANDRA engineering request/realtime commanding	Principal investig
object	&#160	Source name
dtcycle	0	&#160
cycle	P	events from which exps? Prim/Second/Both
ra_targ	0.0	Observer's specified target RA [deg]
dec_targ	0.0	Observer's specified target Dec [deg]
ra_nom	65.019507509694	Nominal RA [deg]
dec_nom	-6.978910964268	Nominal Dec [deg]
roll_nom	14.540036158534	Nominal Roll [deg]
revision	2	Processing version of data
ontime	8271.999969244	Sum of GTIs [s]
livetime	8167.254924833	Livetime [s]
ontime0	8271.999969244	Sum of GTIs [s]
ontime1	8271.999969244	Sum of GTIs [s]
ontime2	8271.999969244	Sum of GTIs [s]
ontime3	8271.999969244	Sum of GTIs [s]
ontime6	8271.999969244	Sum of GTIs [s]
ontime7	8271.999969244	Sum of GTIs [s]
l2events	823622	Number of level 2 events

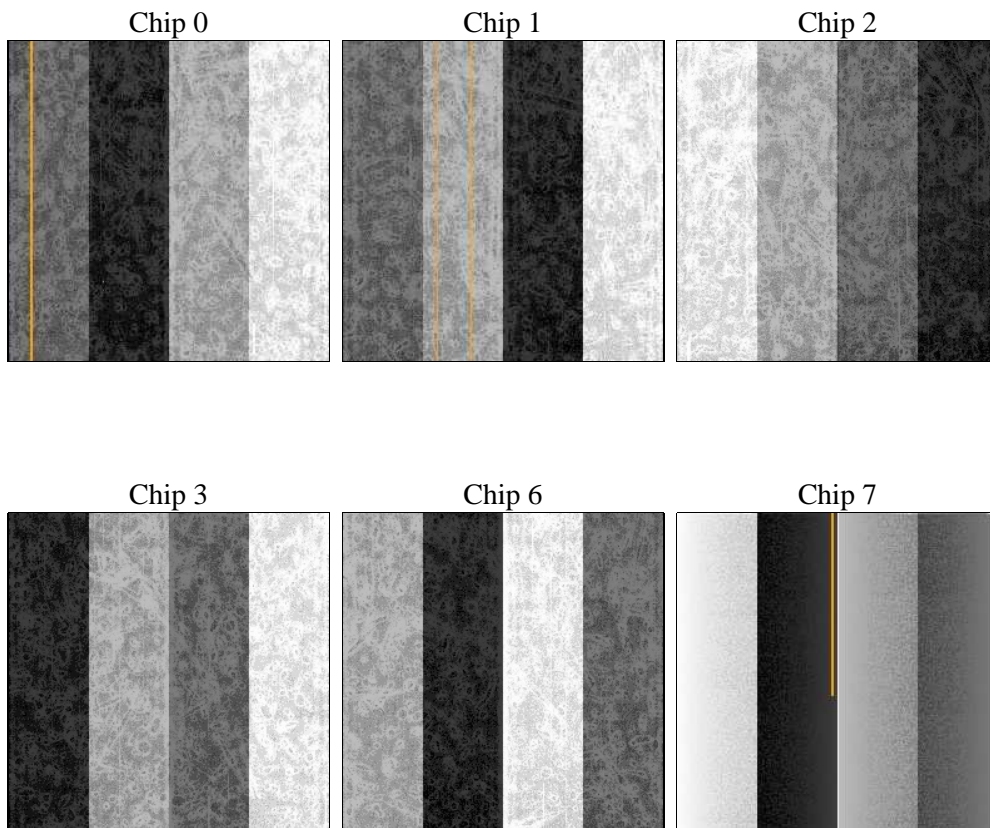
## 2 OBI

### 2.1 OBI

#### 2.1.1 Images



#### 2.1.2 Bias



### 2.1.3 Parameters

obi_num	0	Obi number	sched_exp_time	0.0	[s] Scheduled observation exposure time
ascdsver	8.4.3.1	Processing system revision	ontime	8271.999969244	Sum of GTIs [s]
caldsver	4.4.9	&#160	ontime0	8271.999969244	Sum of GTIs [s]
date	2012-04-14T05:13:41	Date and time of file creation	ontime1	8271.999969244	Sum of GTIs [s]
revision	2	Processing version of data	ontime2	8271.999969244	Sum of GTIs [s]
			ontime3	8271.999969244	Sum of GTIs [s]
			ontime6	8271.999969244	Sum of GTIs [s]
			ontime7	8271.999969244	Sum of GTIs [s]
			l1events	1289283	Number of level 1 events

### 2.1.4 Events

	ccd 0	ccd 1	ccd 2	ccd 3	ccd 6	ccd 7		ccd 0	ccd 1	ccd 2	ccd 3	ccd 6	ccd 7
level 1 events	206343	208030	214230	211271	215779	233630	grade 0 events	74730	74831	77100	77200	76678	37111
rejected events	69019	69602	75716	72185	72301	62596		36%	35%	35%	36%	35%	15%
rejected %	33%	33%	35%	34%	33%	26%	grade 1 events	543	466	623	580	446	169
								0%	0%	0%	0%	0%	0%
							grade 2 events	24230	24846	23223	23570	25197	37178
								11%	11%	10%	11%	11%	15%
							grade 3 events	9140	9158	9046	9407	9167	16515
								4%	4%	4%	4%	4%	7%
							grade 4 events	8957	8846	9235	9356	9085	16331
								4%	4%	4%	4%	4%	6%
							grade 5 events	3841	4101	3719	4317	4189	10459
								1%	1%	1%	2%	1%	4%
							grade 6 events	20267	20747	19910	19553	23351	63899
								9%	9%	9%	9%	10%	27%
							grade 7 events	64635	65035	71374	67288	67666	51968
								31%	31%	33%	31%	31%	22%

## 2.2 Compared Parameters

Parameter	Planned	Actual
Instrument	ACIS	ACIS
Detector	ACIS-012367	ACIS-012367
Grating	NONE	NONE
Data mode	FAINT	FAINT
Observation mode	SECONDARY	SECONDARY
[deg] Pointing RA	0	65.01950750969404
[deg] Pointing Dec	0	-6.978910964268044
[deg] Pointing Roll	0.0	14.54003615853392
[mm] SIM focus pos	-0.782348	-0.7809083437167272
[mm] SIM defocus	0	0.7524282956875696
[mm] SIM translation stage pos	-233.592463	250.466033080201
[mm] SIM translation stage offset	0	-0.01005468664627074
[s] Observation start time (MET)	280585870.343761	280585869.31875
Observation start date	2006-11-22T12:31:10	2006-11-22T12:31:09
[s] Observation end time (MET)	280607756.144794	280607755.11979
Observation end date	2006-11-22T18:35:56	2006-11-22T18:35:55
Read mode	TIMED	TIMED

Parameter	Planned	Actual
Obspar format version number	7	7
Obspar file type	PREDICTED	ACTUAL
Obspar update status	NONE	UPDATED
On-chip summing requested	N	N
Subarray requested	NONE	NONE
Alternating exposures requested	N	N
[s] Primary exposure time	3.2	3.2

## **2.3 Star Slots**

## **2.4 FID Slots**

## A Summary

### A.1 Status

V&V Scientist	Jen Lauer
V&V Date (YYYY-MM-DD)	2012.04.17
V&V Edition	1
V&V Disposition and Status	OK
V&V Charge Time	8.271999969244

### A.2 Comments