

V&V Reference Report

L2 ASCDS Version : 8.4.3.1

Observation 58657 - L2 Version 2
Chandra X-Ray Center

L2 Processing Date : Apr 14 2012

Contents

1	Front	2
2	OBI	3
2.1	OBI	3
2.1.1	Images	3
2.1.2	Bias	3
2.1.3	Parameters	4
2.1.4	Events	4
2.2	Compared Parameters	5
2.3	Star Slots	6
2.4	FID Slots	6
A	Summary	7
A.1	Status	7
A.2	Comments	7

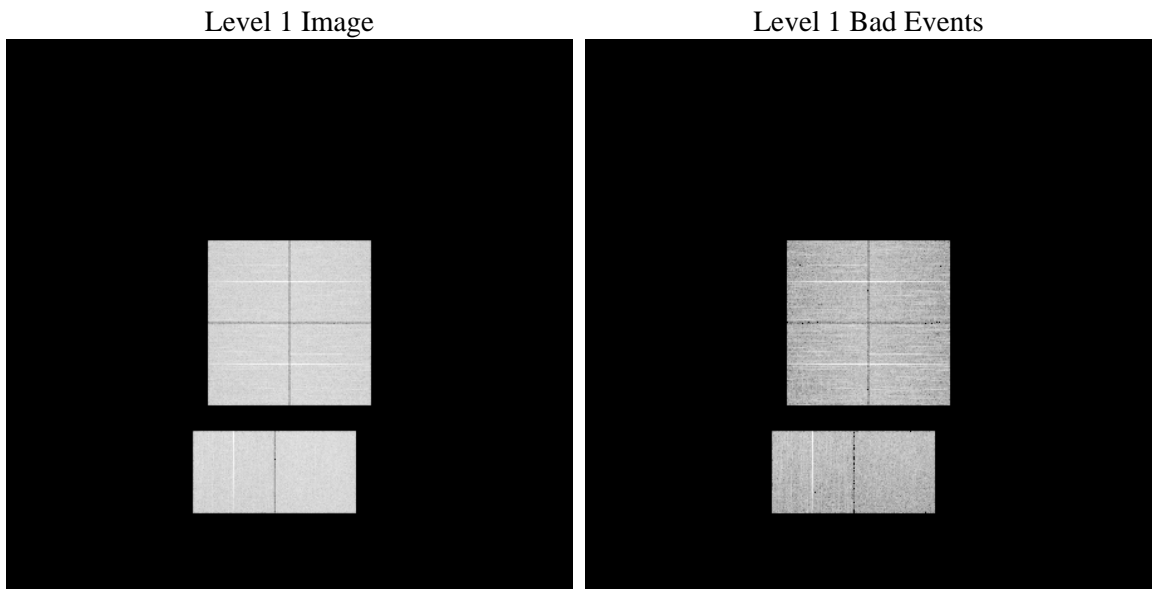
1 Front

seq_num	 	Sequence number
obs_id	58657	Observation id
title	ACIS-012367 diagnostics	Proposal title
observer	CHANDRA engineering request/realtime commanding	Principal investig
object	 	Source name
dtcycle	0	
cycle	P	events from which exps? Prim/Second/Both
ra_targ	0.0	Observer's specified target RA [deg]
dec_targ	0.0	Observer's specified target Dec [deg]
ra_nom	72.959772487049	Nominal RA [deg]
dec_nom	51.985719497313	Nominal Dec [deg]
roll_nom	177.12501915091	Nominal Roll [deg]
revision	2	Processing version of data
ontime	6655.9723863602	Sum of GTIs [s]
livetime	6571.6904562587	Livetime [s]
ontime0	6655.9313463569	Sum of GTIs [s]
ontime1	6655.8903063536	Sum of GTIs [s]
ontime2	6655.8492663503	Sum of GTIs [s]
ontime3	6655.9999752641	Sum of GTIs [s]
ontime6	6655.808226347	Sum of GTIs [s]
ontime7	6655.9723863602	Sum of GTIs [s]
l2events	656459	Number of level 2 events

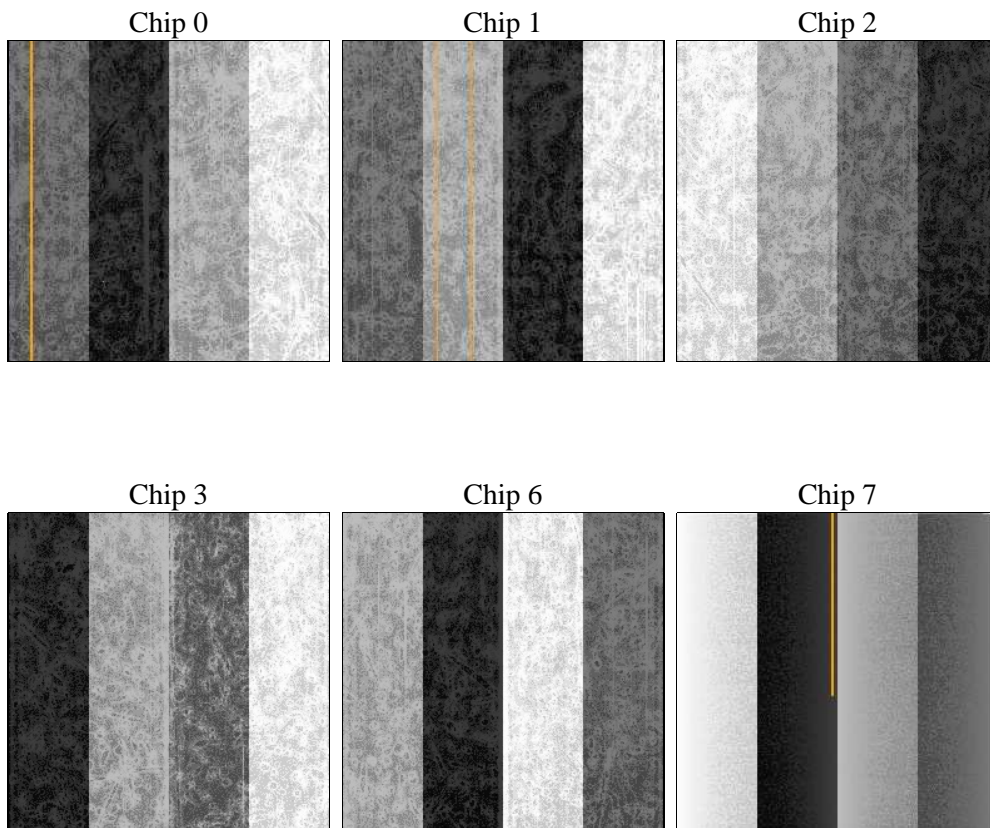
2 OBI

2.1 OBI

2.1.1 Images



2.1.2 Bias



2.1.3 Parameters

obi_num	0	Obi number	sched_exp_time	0.0	[s] Scheduled observation exposure time
ascdsver	8.4.3.1	Processing system revision	ontime	6655.9723863602	Sum of GTIs [s]
caldsver	4.4.9	 	ontime0	6655.9313463569	Sum of GTIs [s]
date	2012-04-14T18:53:17	Date and time of file creation	ontime1	6655.8903063536	Sum of GTIs [s]
revision	2	Processing version of data	ontime2	6655.8492663503	Sum of GTIs [s]
			ontime3	6655.9999752641	Sum of GTIs [s]
			ontime6	6655.808226347	Sum of GTIs [s]
			ontime7	6655.9723863602	Sum of GTIs [s]
			l1events	1038582	Number of level 1 events

2.1.4 Events

	ccd 0	ccd 1	ccd 2	ccd 3	ccd 6	ccd 7		ccd 0	ccd 1	ccd 2	ccd 3	ccd 6	ccd 7
level 1 events	164858	166104	171425	173668	174635	187892	grade 0 events	59800	59292	61603	61450	61631	29241
rejected events	55634	55945	61416	63073	59648	51256		36%	35%	35%	35%	35%	15%
rejected %	33%	33%	35%	36%	34%	27%	grade 1 events	404	332	467	462	387	115
								0%	0%	0%	0%	0%	0%
							grade 2 events	19081	20263	18190	18976	20045	30185
								11%	12%	10%	10%	11%	16%
							grade 3 events	7261	7041	7312	7268	7238	13158
								4%	4%	4%	4%	4%	7%
							grade 4 events	7181	7049	7302	7409	7237	13102
								4%	4%	4%	4%	4%	6%
							grade 5 events	3118	3218	3025	3426	3461	8400
								1%	1%	1%	1%	1%	4%
							grade 6 events	15901	16514	15602	15492	18836	50950
								9%	9%	9%	8%	10%	27%
							grade 7 events	52112	52395	57924	59185	55800	42741
								31%	31%	33%	34%	31%	22%

2.2 Compared Parameters

Parameter	Planned	Actual
Instrument	ACIS	ACIS
Detector	ACIS-012367	ACIS-012367
Grating	NONE	NONE
Data mode	FAINT	FAINT
Observation mode	SECONDARY	SECONDARY
[deg] Pointing RA	0	72.95977248704943
[deg] Pointing Dec	0	51.98571949731335
[deg] Pointing Roll	0.0	177.1250191509079
[mm] SIM focus pos	-0.782348	-0.7809083437167272
[mm] SIM defocus	0	0.7524282956875696
[mm] SIM translation stage pos	-233.592463	250.466033080201
[mm] SIM translation stage offset	0	-0.01005468664627074
[s] Observation start time (MET)	281685326.395707	281685325.3707
Observation start date	2006-12-05T05:55:26	2006-12-05T05:55:25
[s] Observation end time (MET)	281701970.346494	281701969.32149
Observation end date	2006-12-05T10:32:50	2006-12-05T10:32:49
Read mode	TIMED	TIMED

Parameter	Planned	Actual
Obspar format version number	7	7
Obspar file type	PREDICTED	ACTUAL
Obspar update status	NONE	UPDATED
On-chip summing requested	N	N
Subarray requested	NONE	NONE
Alternating exposures requested	N	N
[s] Primary exposure time	3.2	3.2

2.3 Star Slots

2.4 FID Slots

A Summary

A.1 Status

V&V Scientist	Jen Lauer
V&V Date (YYYY-MM-DD)	2012.04.18
V&V Edition	1
V&V Disposition and Status	OK
V&V Charge Time	6.6559723863602

A.2 Comments