

V&V Reference Report

L2 ASCDS Version : 7.6.11.10

Observation 62825 - L2 Version 3
Chandra X-Ray Center

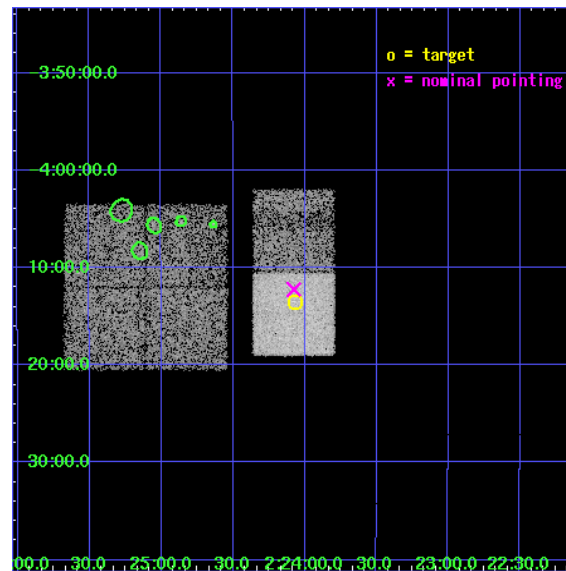
L2 Processing Date : Feb 12 2009

Contents

1	Front	2
2	OBI	3
2.1	OBI	3
2.1.1	Images	3
2.1.2	Bias	3
2.1.3	Parameters	4
2.1.4	Events	4
2.2	Compared Parameters	5
2.3	Aspect	6
2.4	Star Slots	9
2.4.1	Slot 3	9
2.4.2	Slot 4	10
2.4.3	Slot 5	11
2.4.4	Slot 6	12
2.4.5	Slot 7	13
2.5	FID Slots	14
2.5.1	Slot 0	14
2.5.2	Slot 1	15
2.5.3	Slot 2	16
3	Point Sources	17
A	Summary	18
A.1	Status	18
A.2	Comments	18

1 Front

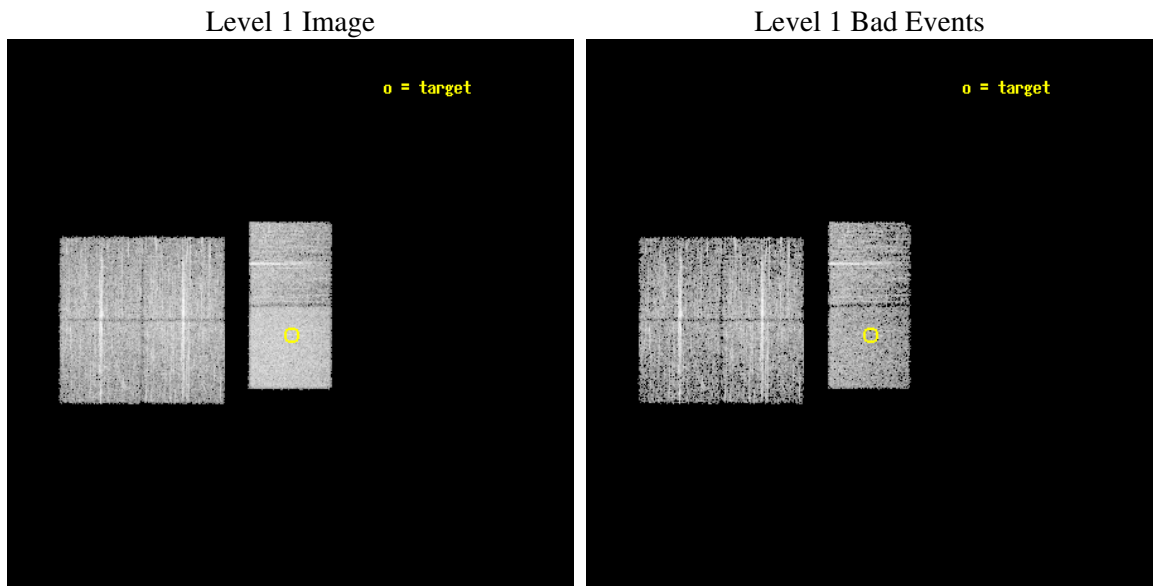
seq_num	800500
obs_id	62825
title	A detailed study of a $z>1$ galaxy cluster
observer	Dr Laurence Jones
object	XLSSJ022404.0-041328
dtcycle	0
cycle	P
ra_targ	36.017083
dec_targ	-4.224694
ra_nom	36.01876054501
dec_nom	-4.2039531532706
roll_nom	90.156755808019
revision	3
ontime	6044.7999774814
livetime	5968.2570804249
ontime0	6044.7999774814
ontime1	6044.7999774814
ontime2	6044.7999774814
ontime3	6044.7999774814
ontime6	6044.7999774814
ontime7	6044.7999774814
l2events	58878



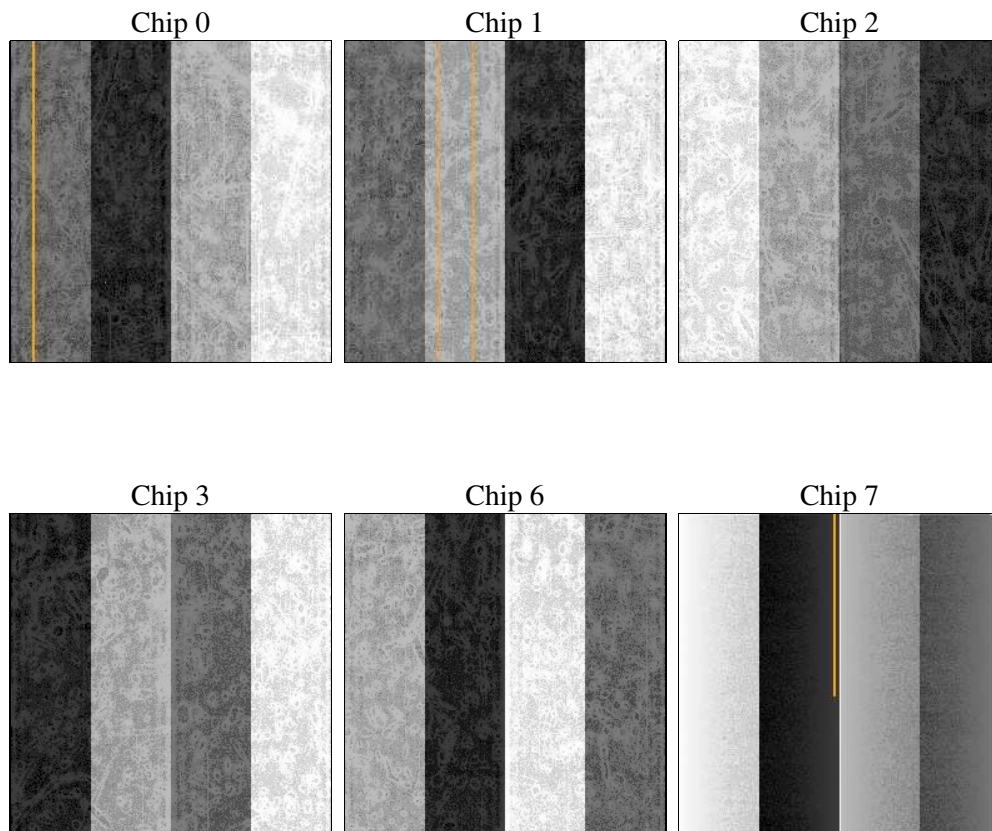
2 OBI

2.1 OBI

2.1.1 Images



2.1.2 Bias



2.1.3 Parameters

obi_num	0
ascdsver	7.6.11.10
caldbver	3.5.1
date	2009-02-12T22:36:39
revision	3

sched_exp_time	8651
ontime	6044.7999774814
ontime0	6044.7999774814
ontime1	6044.7999774814
ontime2	6044.7999774814
ontime3	6044.7999774814
ontime6	6044.7999774814
ontime7	6044.7999774814
l1events	246350

2.1.4 Events

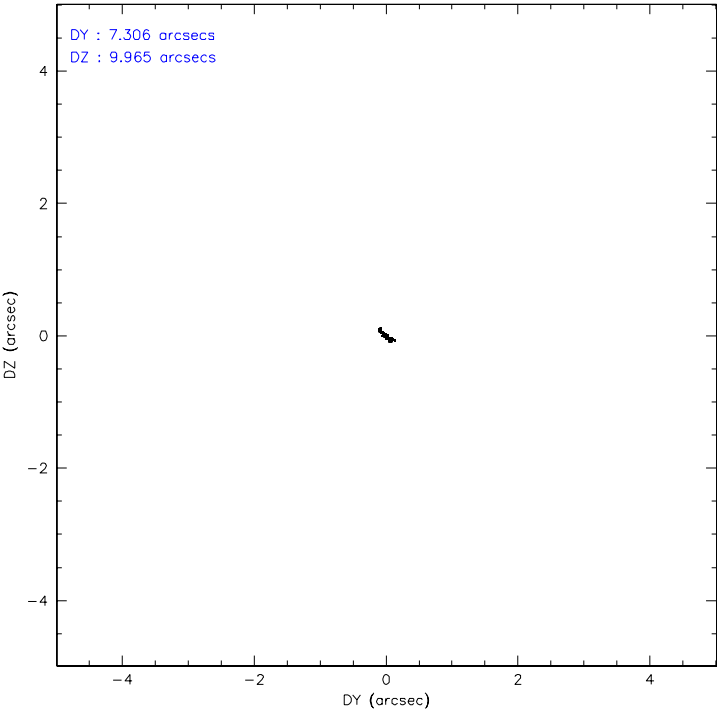
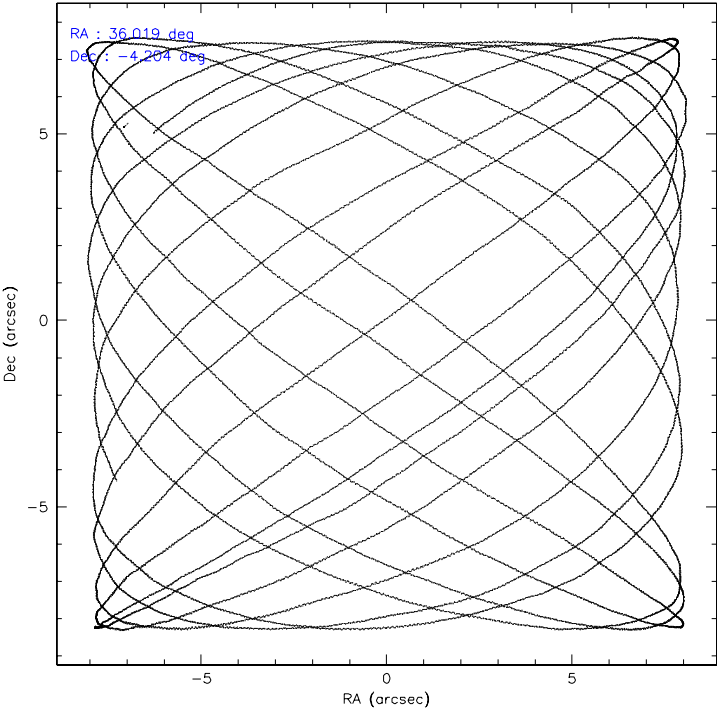
	ccd 0	ccd 1	ccd 2	ccd 3	ccd 6	ccd 7
level 1 events	36347	35268	39897	38834	38953	57051
rejected events	29254	27958	33010	32032	31471	28635
rejected %	80%	79%	82%	82%	80%	50%

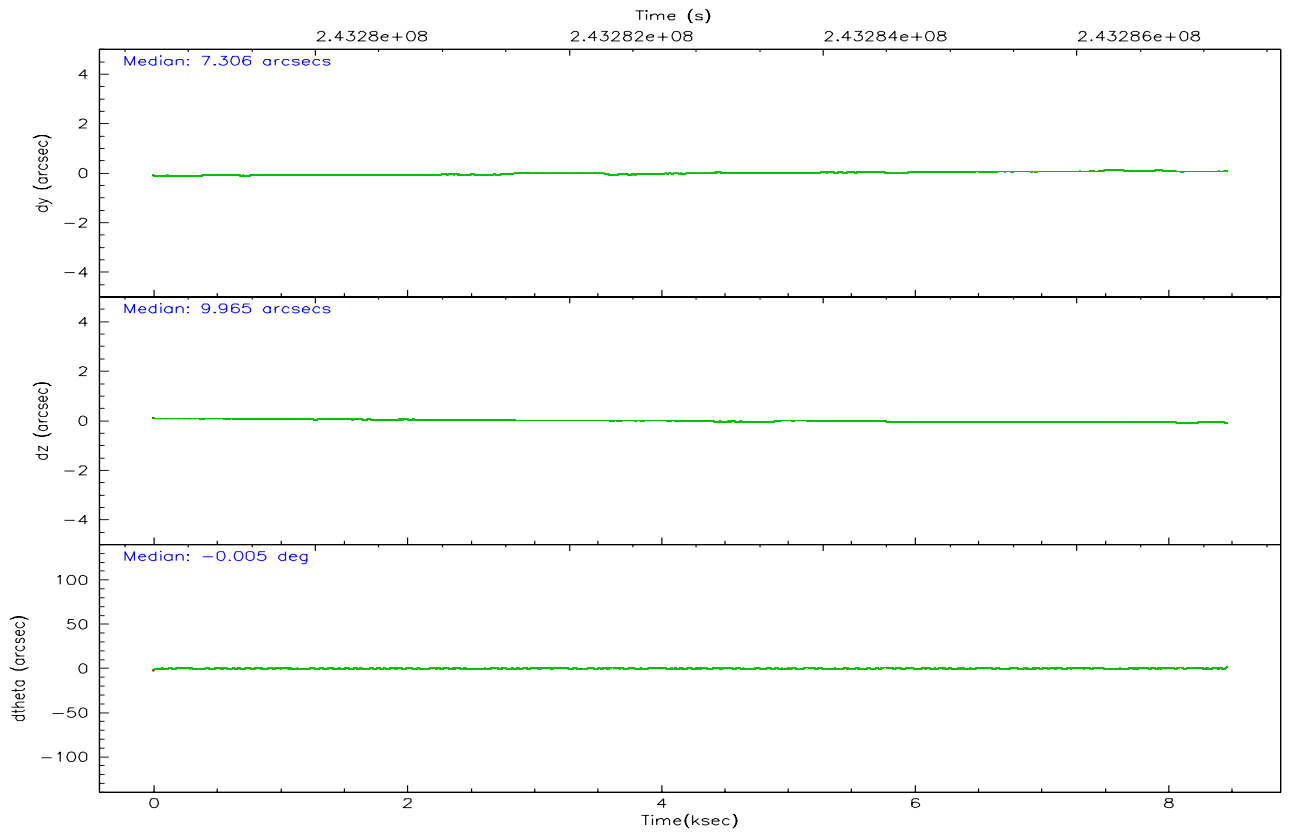
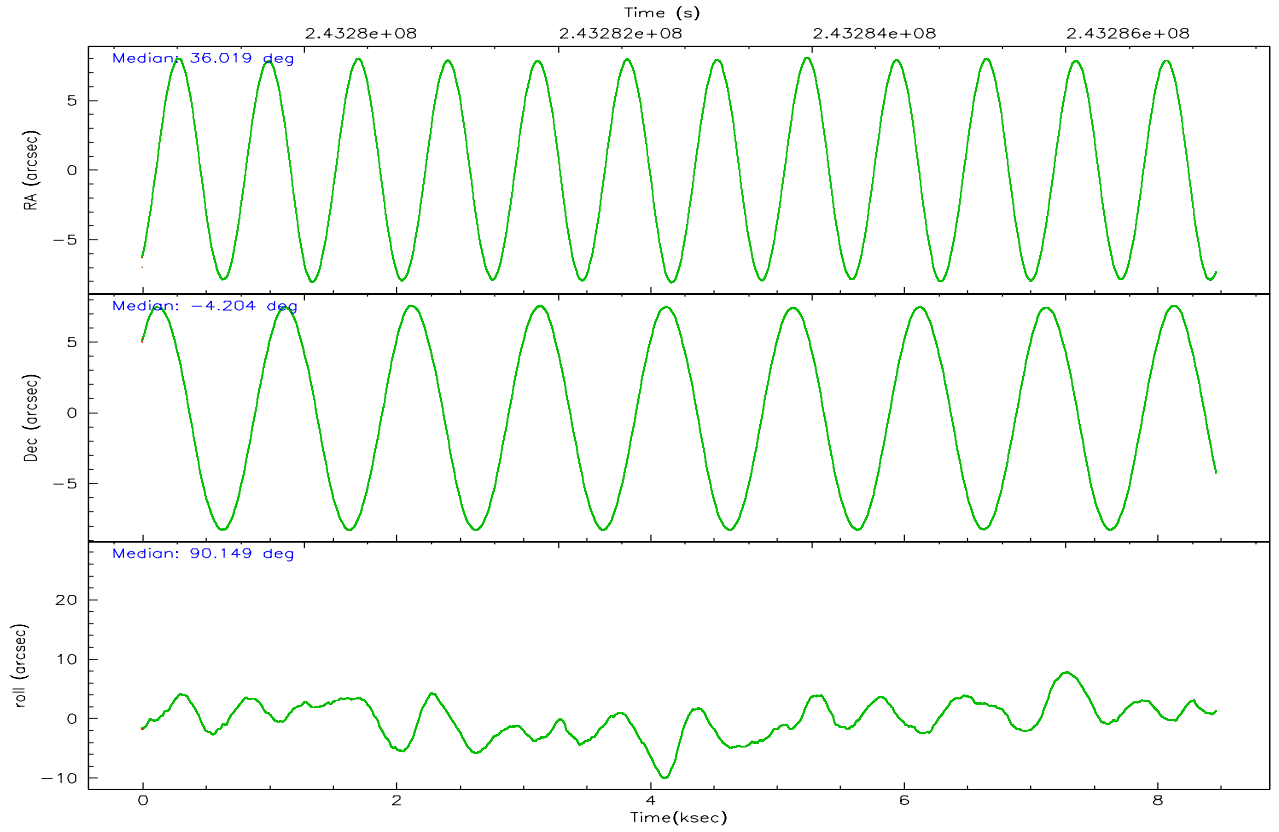
	ccd 0	ccd 1	ccd 2	ccd 3	ccd 6	ccd 7
grade 0 events	3318	3236	3409	3138	3534	2899
	9%	9%	8%	8%	9%	5%
grade 1 events	35	20	37	24	29	53
	0%	0%	0%	0%	0%	0%
grade 2 events	1622	1677	1497	1483	1706	5486
	4%	4%	3%	3%	4%	9%
grade 3 events	499	516	428	486	498	2521
	1%	1%	1%	1%	1%	4%
grade 4 events	445	492	487	493	476	2439
	1%	1%	1%	1%	1%	4%
grade 5 events	1427	1566	1399	1705	1620	4729
	3%	4%	3%	4%	4%	8%
grade 6 events	1219	1395	1073	1208	1276	15095
	3%	3%	2%	3%	3%	26%
grade 7 events	27782	26366	31567	30297	29814	23829
	76%	74%	79%	78%	76%	41%

2.2 Compared Parameters

Parameter	Planned	Actual	Parameter	Planned	Actual
Instrument	ACIS	ACIS	Obspar format version number	6	6
Detector	ACIS-012367	ACIS-012367	Obspar file type	PREDICTED	ACTUAL
Grating	NONE	NONE	Obspar update status	OVERRIDE	OVERRIDE
Data mode	FAINT	FAINT	Number of optional ACIS chips dropped	0	0
Observation mode	POINTING	POINTING	On-chip summing requested	N	N
Pointing RA	36.01876054500951	36.01876054500951	Subarray requested	NONE	NONE
Pointing Dec	-4.203953153270602	-4.203953153270602	Alternating exposures requested	N	N
Pointing Roll	90.15675580801933	90.15675580801933	Primary exposure time	3.2	3.2
SIM focus pos (mm)	-0.6828225247311905	-0.6828225247311905			
SIM defocus (mm)	0.001444942264670179	0.001444942264670179			
SIM translation stage pos (mm)	-190.1425803652	-190.1425803652			
SIM translation stage offset (mm)	0.01005726123278805	0.01005726123278805			
Observation start time	243278711.954747	243278711.954747			
Observation start date	2005-09-16T17:24:07	2005-09-16T17:25:11			
Observation end time	243287362.955144	243287362.955144			
Observation end date	2005-09-16T19:48:18	2005-09-16T19:49:22			
Read mode	TIMED	TIMED			

2.3 Aspect



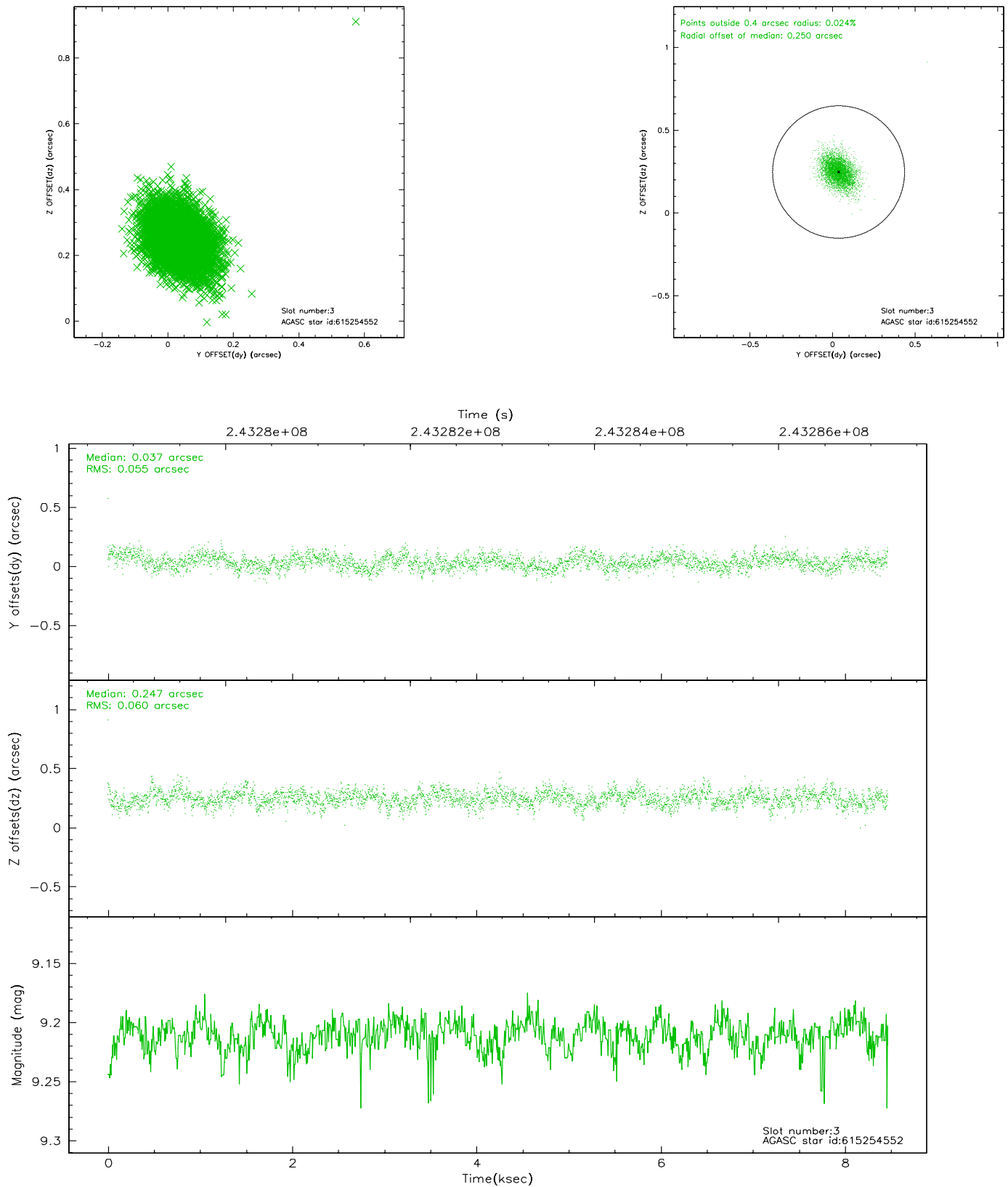


Slot Statistics

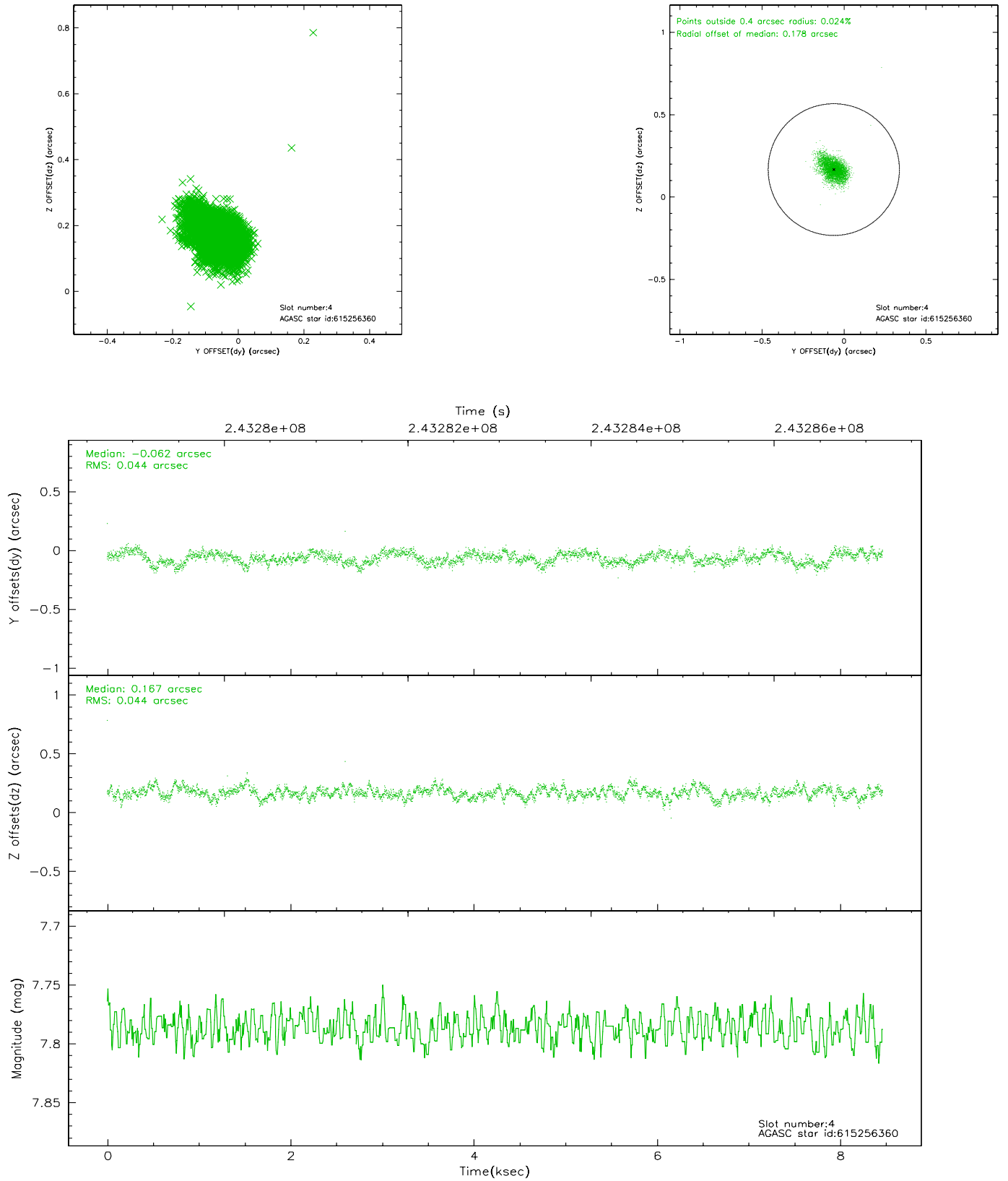
slot	status	id	mag	n_pts	med_dy	med_dz	dr1	dr2	ra	dec	mean_y	mean_z
0	FID	ACIS-S-2	7.10	2065	-0.050	-0.033	0.007	0.011	0.000000	0.000000	-760.07	-1731.21
1	FID	ACIS-S-4	7.21	2064	0.111	0.033	0.006	0.010	0.000000	0.000000	2153.03	176.73
2	FID	ACIS-S-5	7.24	2065	-0.092	0.009	0.006	0.011	0.000000	0.000000	-1812.16	171.02
3	GUIDE	615254552	9.21	4126	0.037	0.247	0.084	0.142	36.600600	-3.877551	1258.90	-2038.73
4	GUIDE	615256360	7.79	4130	-0.062	0.167	0.065	0.107	36.286608	-3.875886	1265.54	-911.82
5	GUIDE	615256944	9.82	4126	0.155	-0.330	0.141	0.242	35.497386	-4.510719	-1020.57	1921.13
6	GUIDE	615260160	9.72	4123	0.059	-0.113	0.102	0.169	35.737387	-3.921265	1100.86	1061.61
7	GUIDE	615261280	10.29	4127	-0.176	0.037	0.192	0.317	36.528599	-4.553299	-1173.61	-1778.88

2.4 Star Slots

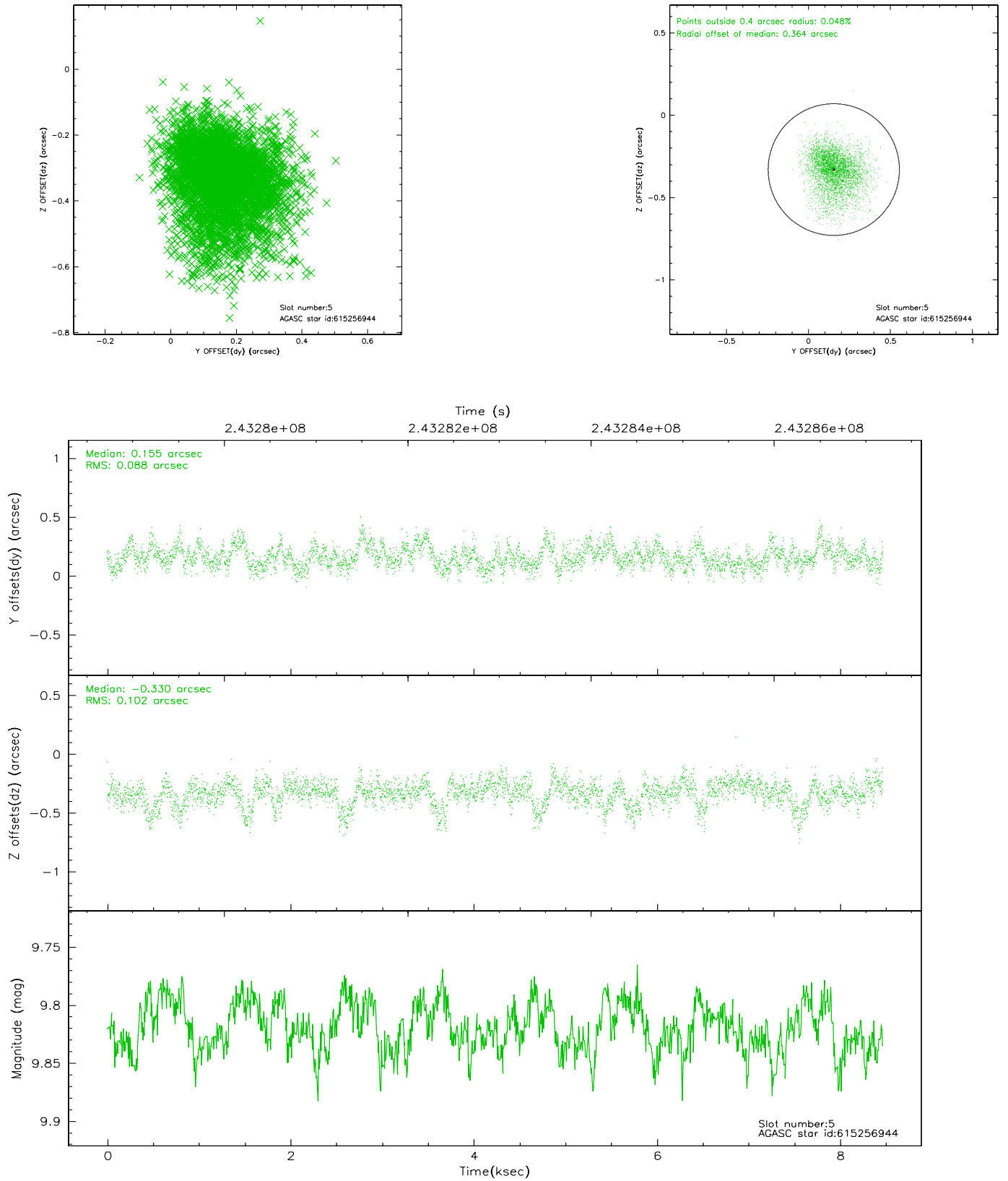
2.4.1 Slot 3



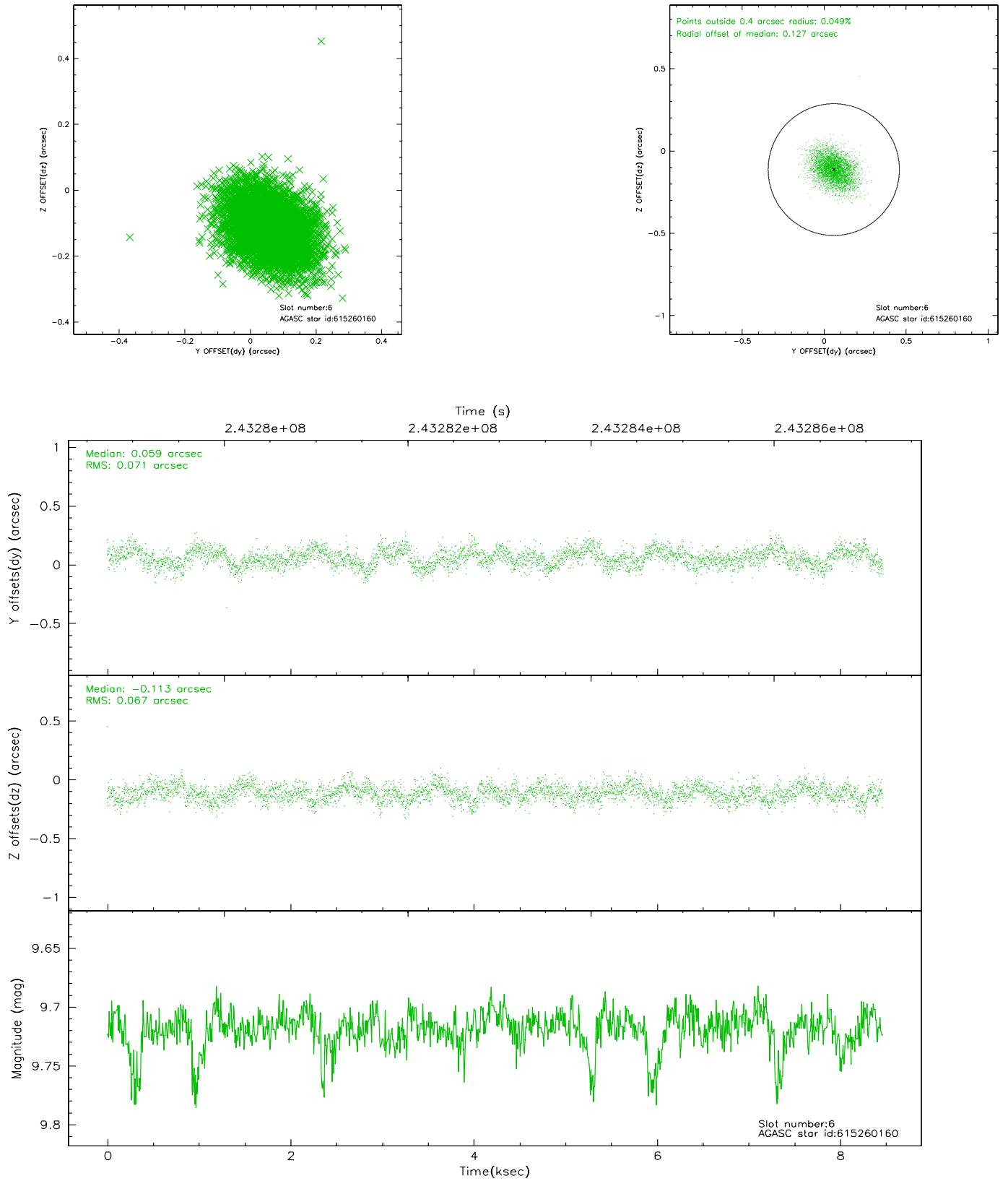
2.4.2 Slot 4



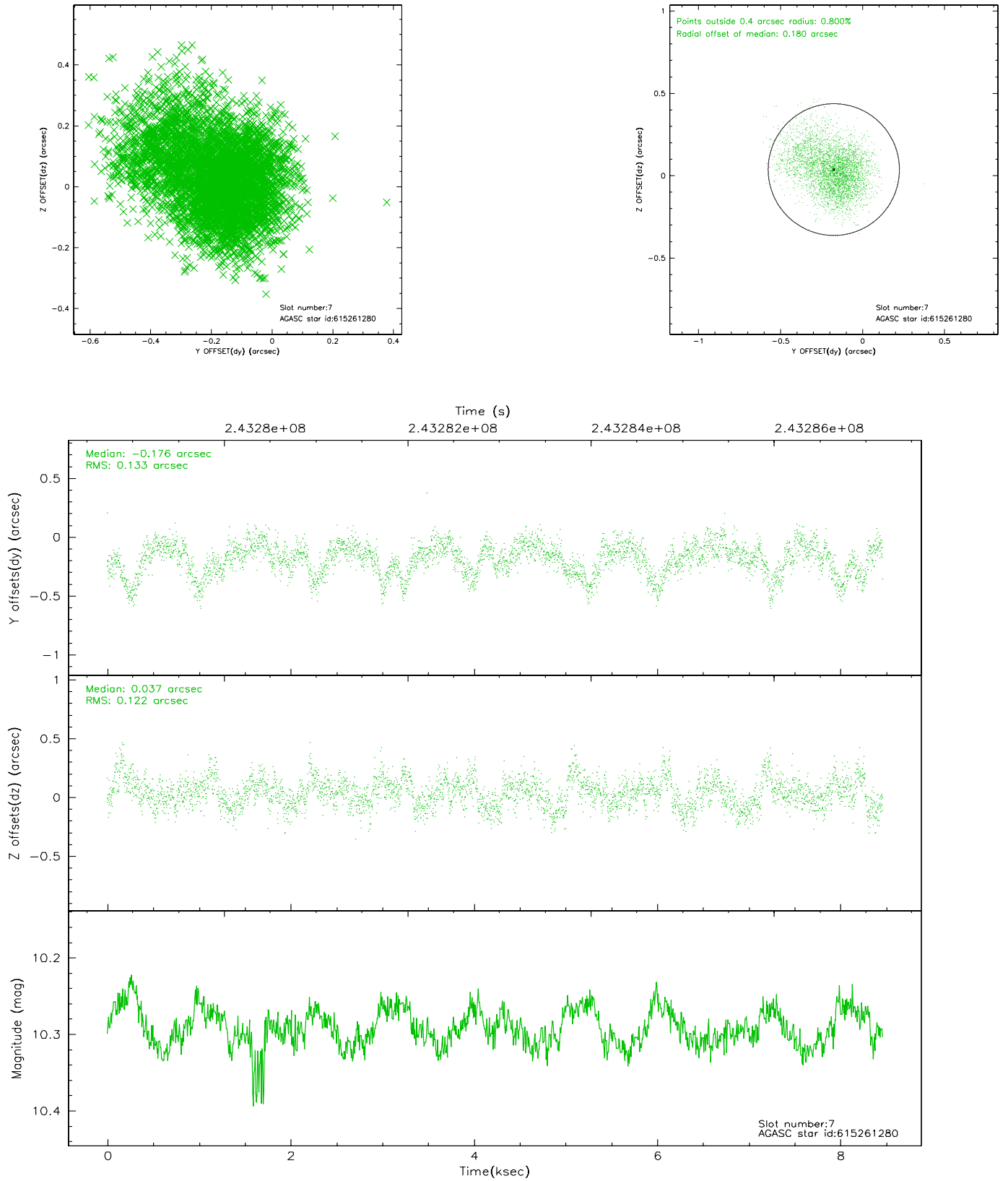
2.4.3 Slot 5



2.4.4 Slot 6

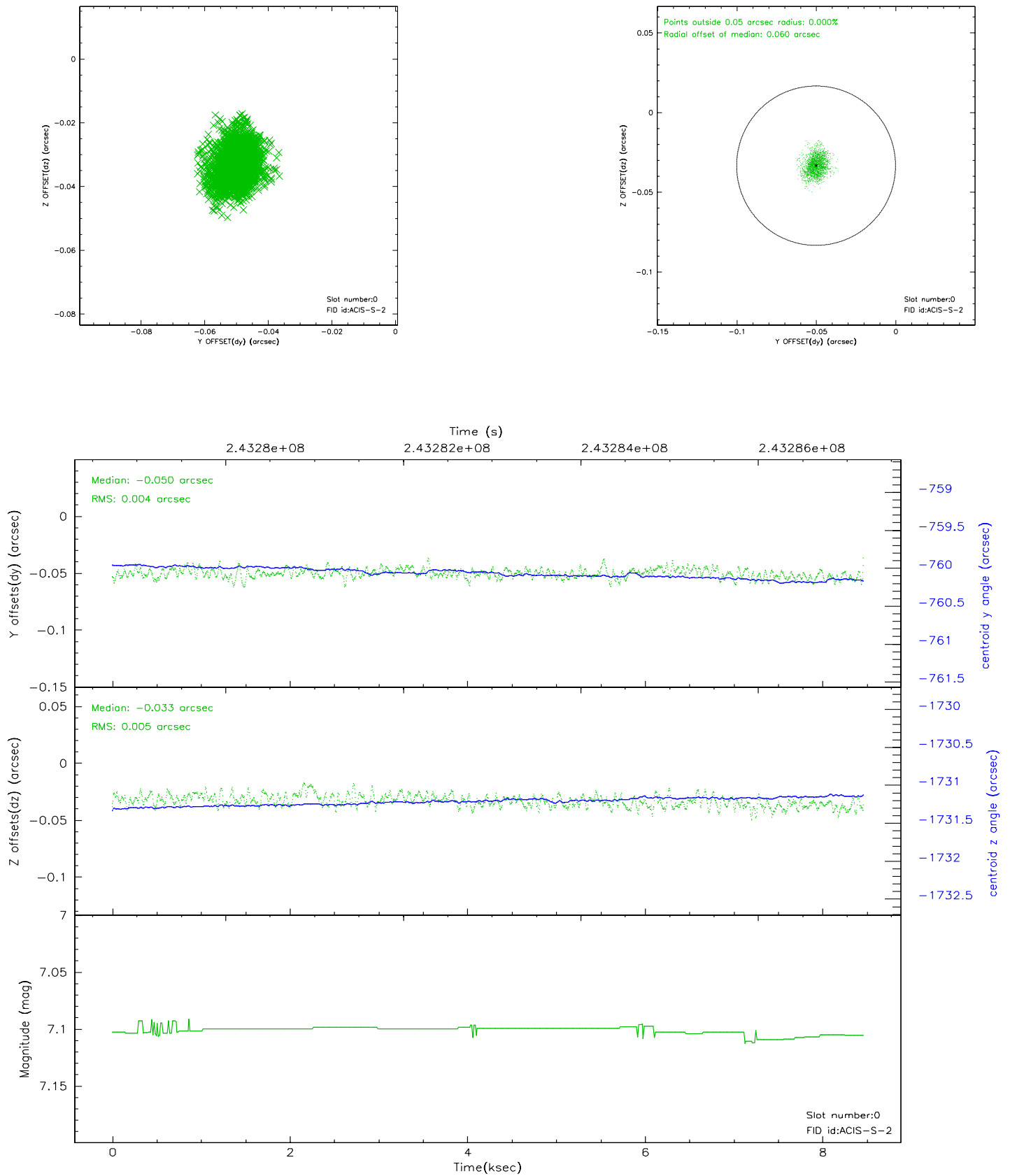


2.4.5 Slot 7

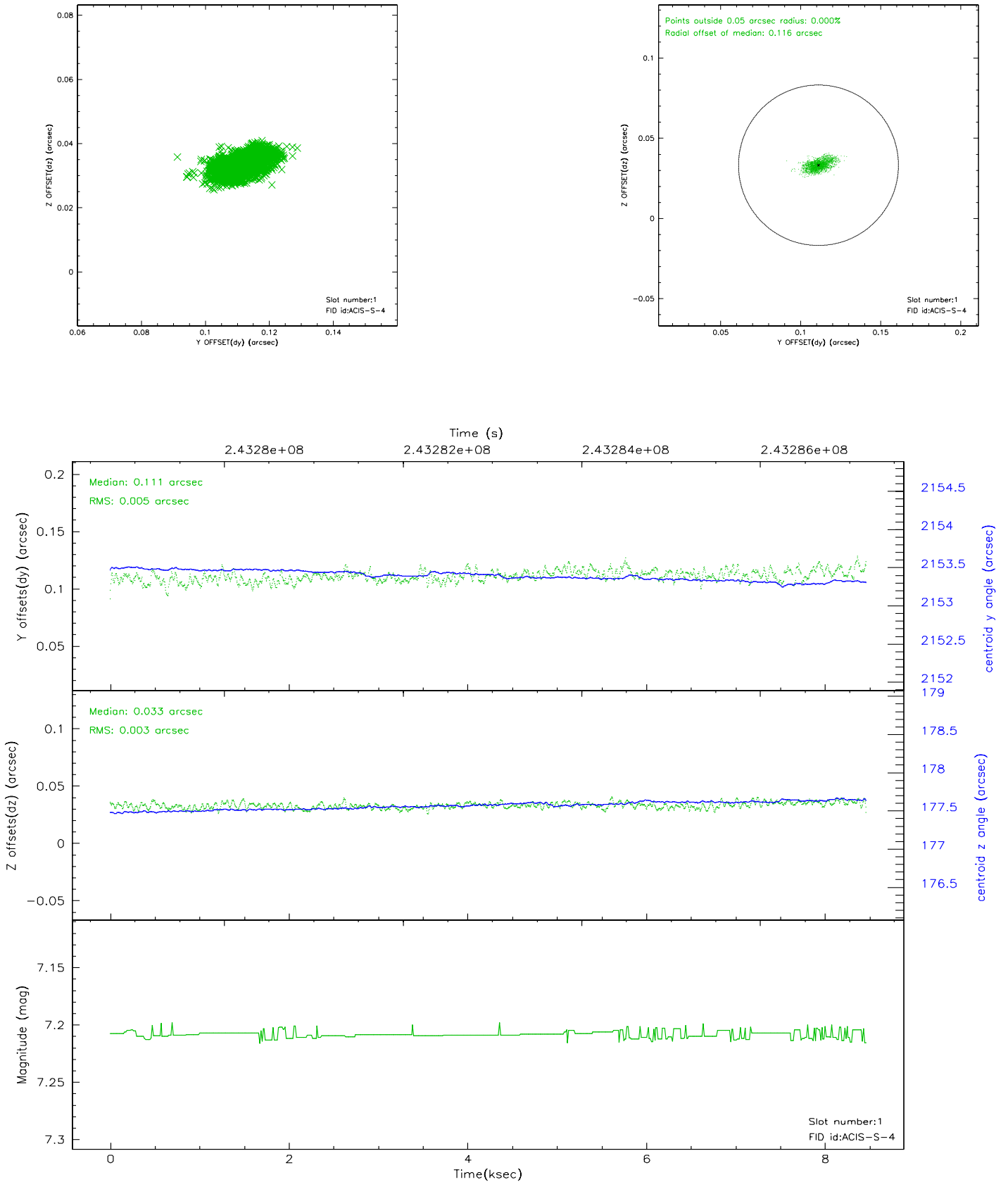


2.5 FID Slots

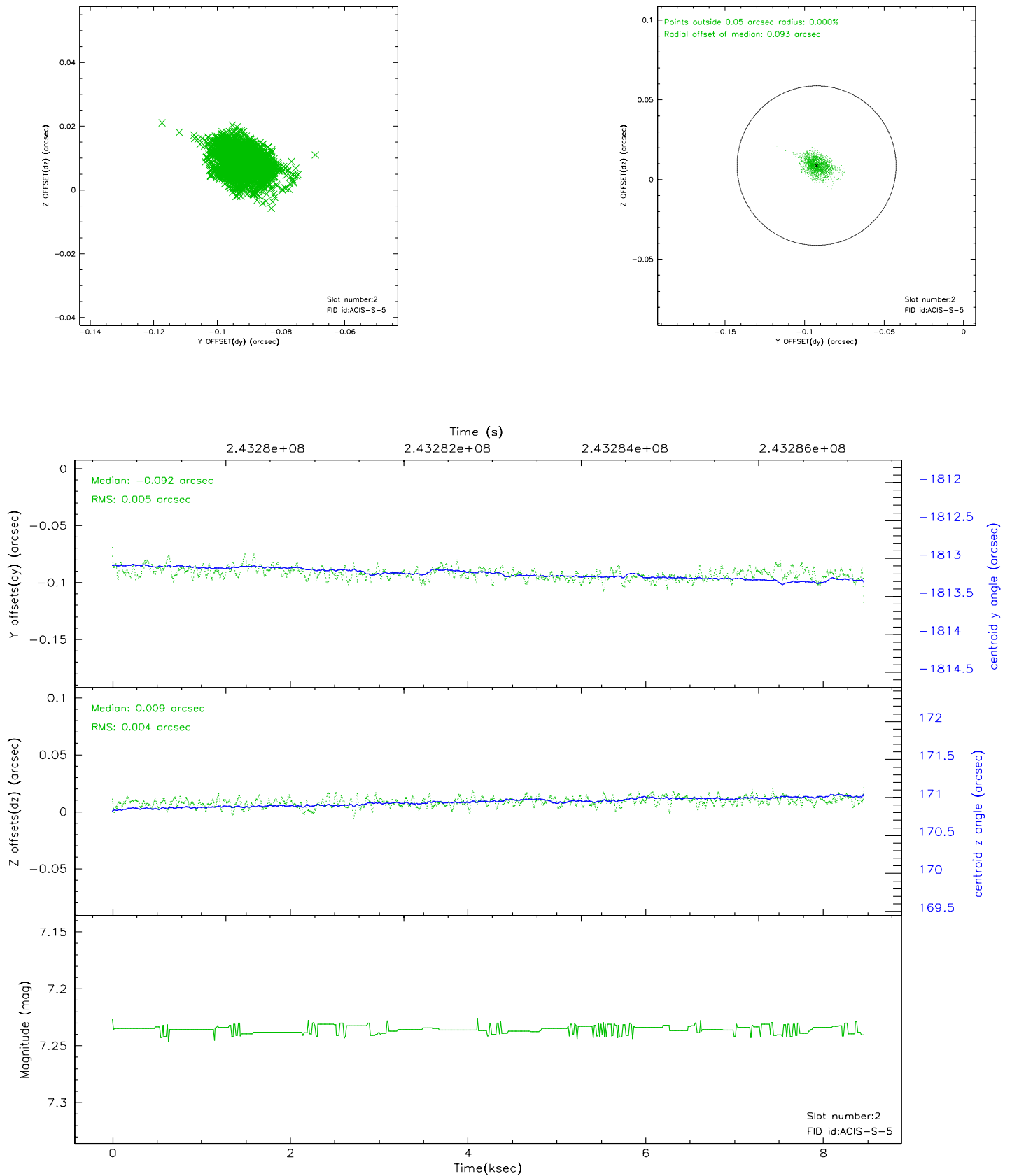
2.5.1 Slot 0



2.5.2 Slot 1



2.5.3 Slot 2



3 Point Sources

13.66 arcmin



A Summary

A.1 Status

V&V Scientist	Joy Nichols
V&V Date (YYYY-MM-DD)	2009.02.17
V&V Edition	1
V&V Disposition and Status	OK
V&V Charge Time	6.04479997

A.2 Comments

This obsid was reprocessed to correct minor errors in parameters used in processing. Some of these parameters cannot be determined automatically for this observation and must be derived.===== This observation was taken to verify the ACIS recovery from a DEA anomaly. ACIS was in the focal plane and pointing was at the position of XLSSJ022404.0-041328. The chip configuration is different from that requested by the PI, and the ACIS mode is FAINT as opposed to VFaint. The stars file used was that of obs5787. Fid in slot 0 radial offset > 0.400000 arcsec Fid in slot 2 radial offset > 0.400000 arcsec As a consequence of the DEA-A shutdown anomaly on Sep 15th (DOY258), the the reported value of the ACIS FP temperature was ~1.3 degrees warmer than the actual temperature. GOs should subtract 1.3 degrees from the reported temperature to determine the true temperature. In addition the FP temperature was not regulating during this period. The FP temperature fluctuated between -121.3 C and -118.8 C during this time. For analysis of line-dominated spectra from the FI CCDs, GOs might notice a systematic gain shift by up to 0.5%, either towards higher/lower energies depending on if the FP temperature was colder/warmer than -119.7 C. Analysis of line-dominated spectra on S3 are mostly unaffected (where mostly unaffected means that the changes are smaller than the current uncertainties in the calibration). Analysis of continuum-dominated spectra on both the FI and BI CCDs are mostly unaffected. Imaging analysis on both the FI and BI CCDs are mostly unaffected.