

# V&V Reference Report

## L2 ASCDS Version : 8.5.1

Observation 59855 - L2 Version 4  
Chandra X-Ray Center

L2 Processing Date : Dec 16 2012

## Contents

<b>1</b>	<b>Front</b>	<b>2</b>
<b>2</b>	<b>OBI</b>	<b>3</b>
2.1	OBI . . . . .	3
2.1.1	Images . . . . .	3
2.1.2	Bias . . . . .	3
2.1.3	Parameters . . . . .	4
2.1.4	Events . . . . .	4
2.2	Compared Parameters . . . . .	5
2.3	Star Slots . . . . .	6
2.4	FID Slots . . . . .	6
<b>A</b>	<b>Summary</b>	<b>7</b>
A.1	Status . . . . .	7
A.2	Comments . . . . .	7

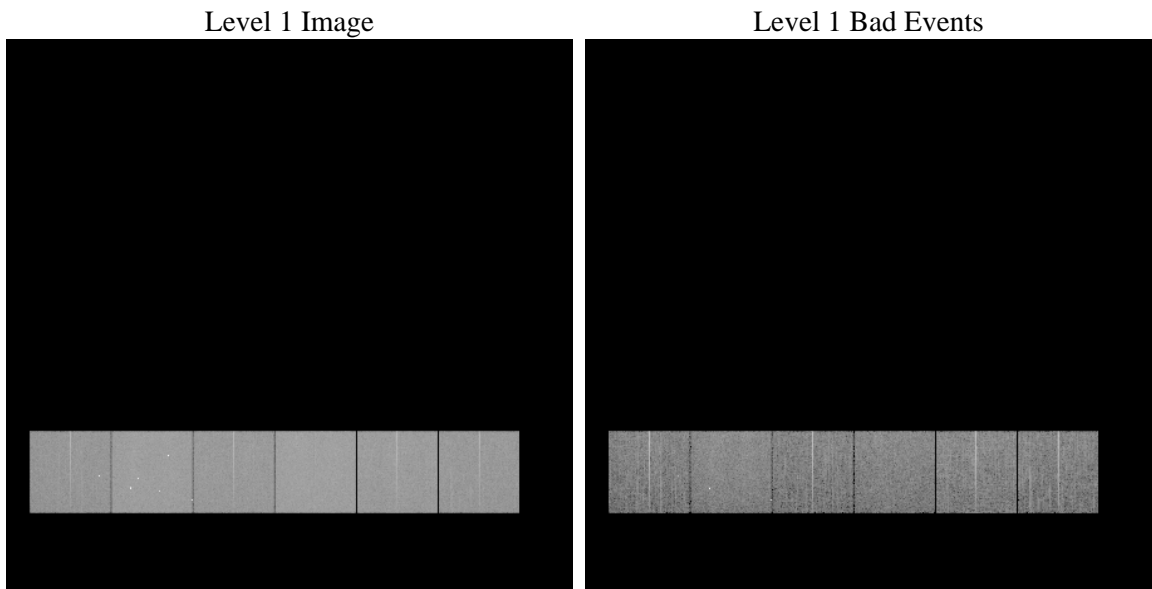
# 1 Front

seq_num	&#160	Sequence number
obs_id	59855	Observation id
title	ACIS-456789 diagnostics	Proposal title
observer	CHANDRA engineering request/realtime commanding	Principal investig
object	&#160	Source name
dtcycle	0	&#160
cycle	P	events from which exps? Prim/Second/Both
ra_targ	0.0	Observer's specified target RA [deg]
dec_targ	0.0	Observer's specified target Dec [deg]
ra_nom	108.98582476529	Nominal RA [deg]
dec_nom	31.774154150385	Nominal Dec [deg]
roll_nom	212.09039062649	Nominal Roll [deg]
revision	4	Processing version of data
ontime	7611.7480219901	Sum of GTIs [s]
livetime	7515.3634852912	Livetime [s]
ontime4	5715.6556751132	Sum of GTIs [s]
ontime5	7611.7069819868	Sum of GTIs [s]
ontime6	6312.0358169079	Sum of GTIs [s]
ontime7	7611.7480219901	Sum of GTIs [s]
ontime8	6400.995955646	Sum of GTIs [s]
ontime9	6065.8449658453	Sum of GTIs [s]
l2events	1013325	Number of level 2 events

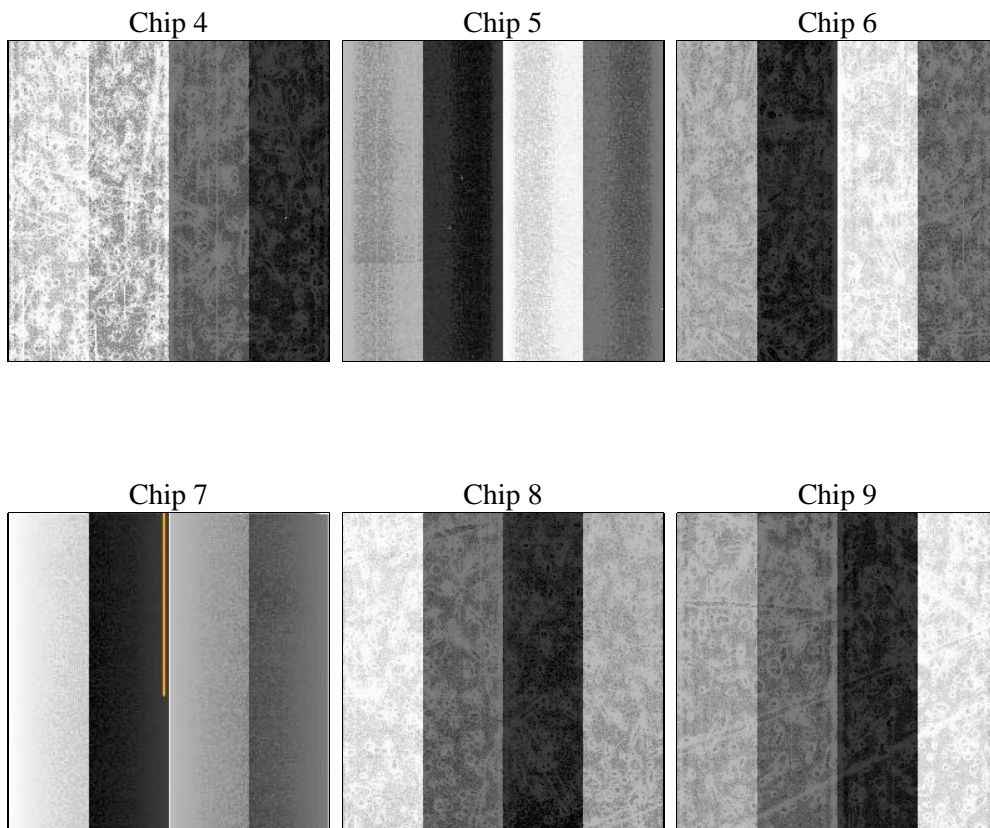
## 2 OBI

### 2.1 OBI

#### 2.1.1 Images



#### 2.1.2 Bias



### 2.1.3 Parameters

obi_num	0	Obi number	sched_exp_time	6360	[s] Scheduled observation exposure time
ascdsver	8.5.1	Processing system revision	ontime	7611.7480219901	Sum of GTIs [s]
caldbver	4.5.5	&#160	ontime4	5715.6556751132	Sum of GTIs [s]
date	2012-12-16T05:04:49	Date and time of file creation	ontime5	7611.7069819868	Sum of GTIs [s]
revision	4	Processing version of data	ontime6	6312.0358169079	Sum of GTIs [s]
			ontime7	7611.7480219901	Sum of GTIs [s]
			ontime8	6400.995955646	Sum of GTIs [s]
			ontime9	6065.8449658453	Sum of GTIs [s]
			l1events	1409243	Number of level 1 events

### 2.1.4 Events

	ccd 4	ccd 5	ccd 6	ccd 7	ccd 8	ccd 9		ccd 4	ccd 5	ccd 6	ccd 7	ccd 8	ccd 9
level 1 events	197532	263189	222422	273877	240523	211700	grade 0 events	87218	43318	95044	54122	100264	89767
rejected events	51716	61538	50793	52440	60189	52142		44%	16%	42%	19%	41%	42%
rejected %	26%	23%	22%	19%	25%	24%	grade 1 events	685	427	557	185	528	533
								0%	0%	0%	0%	0%	0%
							grade 2 events	23054	77284	30437	50093	32244	27840
								11%	29%	13%	18%	13%	13%
							grade 3 events	9967	11054	10889	22636	12176	10319
								5%	4%	4%	8%	5%	4%
							grade 4 events	10094	10889	11047	22180	11910	10550
								5%	4%	4%	8%	4%	4%
							grade 5 events	2620	8760	3062	8268	3716	3160
								1%	3%	1%	3%	1%	1%
							grade 6 events	18961	64076	28035	77792	28096	24755
								9%	24%	12%	28%	11%	11%
							grade 7 events	44933	47381	43351	38601	51589	44776
								22%	18%	19%	14%	21%	21%

## 2.2 Compared Parameters

Parameter	Planned	Actual
Instrument	ACIS	ACIS
Detector	ACIS-456789	ACIS-456789
Grating	NONE	NONE
Data mode	FAINT	FAINT
Observation mode	SECONDARY	SECONDARY
[deg] Pointing RA	108.98585246807	108.9858247652939
[deg] Pointing Dec	31.77416887984104	31.77415415038496
[deg] Pointing Roll	212.0903760314363	212.0903906264949
[mm] SIM focus pos	-0.68282252473119	-0.68282252473119
[mm] SIM defocus	0.8505140384245534	0.8505140384245534
[mm] SIM translation stage pos	250.4660330802	250.4660330802
[mm] SIM translation stage offset	-0.01005726120527584	-0.01005726120527584
[s] Observation start time (MET)	222059370.088141	222059370.088141
Observation start date	2005-01-14T03:39:00	2005-01-14T03:09:30
[s] Observation end time (MET)	222068889.01756	222068889.01756
Observation end date	2005-01-14T05:25:00	2005-01-14T05:48:09
Read mode	TIMED	TIMED

Parameter	Planned	Actual
Obspar format version number	7	7
Obspar file type	PREDICTED	ACTUAL
Obspar update status	OVERRIDE	OVERRIDE
Number of optional ACIS chips dropped	0	0
On-chip summing requested	N	N
Subarray requested	NONE	NONE
Alternating exposures requested	N	N
[s] Primary exposure time	3.2	3.2

## **2.3 Star Slots**

## **2.4 FID Slots**

## A Summary

### A.1 Status

V&V Scientist	Beth Sundheim
V&V Date (YYYY-MM-DD)	2013.01.08
V&V Edition	1
V&V Disposition and Status	OK
V&V Charge Time	7.6117480219901

### A.2 Comments