

# V&V Reference Report

## L2 ASCDS Version : 8.5.1

Observation 59827 - L2 Version 3  
Chandra X-Ray Center

L2 Processing Date : Dec 16 2012

## Contents

<b>1</b>	<b>Front</b>	<b>2</b>
<b>2</b>	<b>OBI</b>	<b>3</b>
2.1	OBI . . . . .	3
2.1.1	Images . . . . .	3
2.1.2	Bias . . . . .	3
2.1.3	Parameters . . . . .	4
2.1.4	Events . . . . .	4
2.2	Compared Parameters . . . . .	5
2.3	Star Slots . . . . .	6
2.4	FID Slots . . . . .	6
<b>A</b>	<b>Summary</b>	<b>7</b>
A.1	Status . . . . .	7
A.2	Comments . . . . .	7

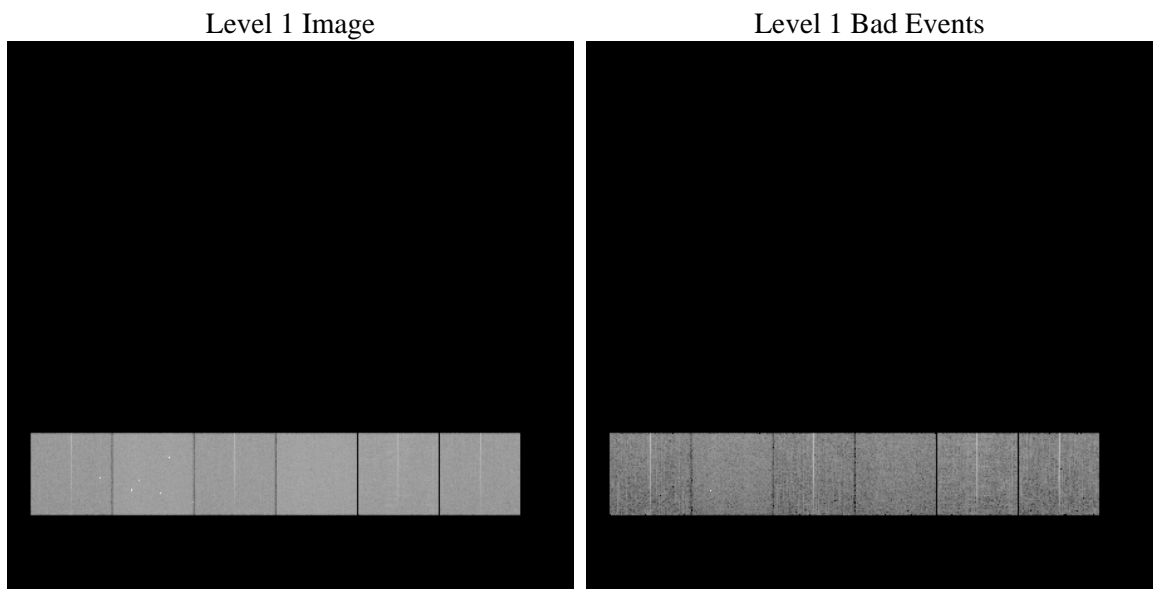
# 1 Front

seq_num	&#160	Sequence number
obs_id	59827	Observation id
title	ACIS-456789 diagnostics	Proposal title
observer	CHANDRA engineering request/realtime commanding	Principal investig
object	&#160	Source name
dtcycle	0	&#160
cycle	P	events from which exps? Prim/Second/Both
ra_targ	0.0	Observer's specified target RA [deg]
dec_targ	0.0	Observer's specified target Dec [deg]
ra_nom	125.97900244739	Nominal RA [deg]
dec_nom	30.977744498965	Nominal Dec [deg]
roll_nom	198.15896400985	Nominal Roll [deg]
revision	3	Processing version of data
ontime	8265.5999692082	Sum of GTIs [s]
livetime	8160.9359654513	Livetime [s]
ontime4	6466.8577796221	Sum of GTIs [s]
ontime5	8265.5999692082	Sum of GTIs [s]
ontime6	6829.8477684259	Sum of GTIs [s]
ontime7	8265.5999692082	Sum of GTIs [s]
ontime8	7176.6316524148	Sum of GTIs [s]
ontime9	6752.0639032423	Sum of GTIs [s]
l2events	1103108	Number of level 2 events

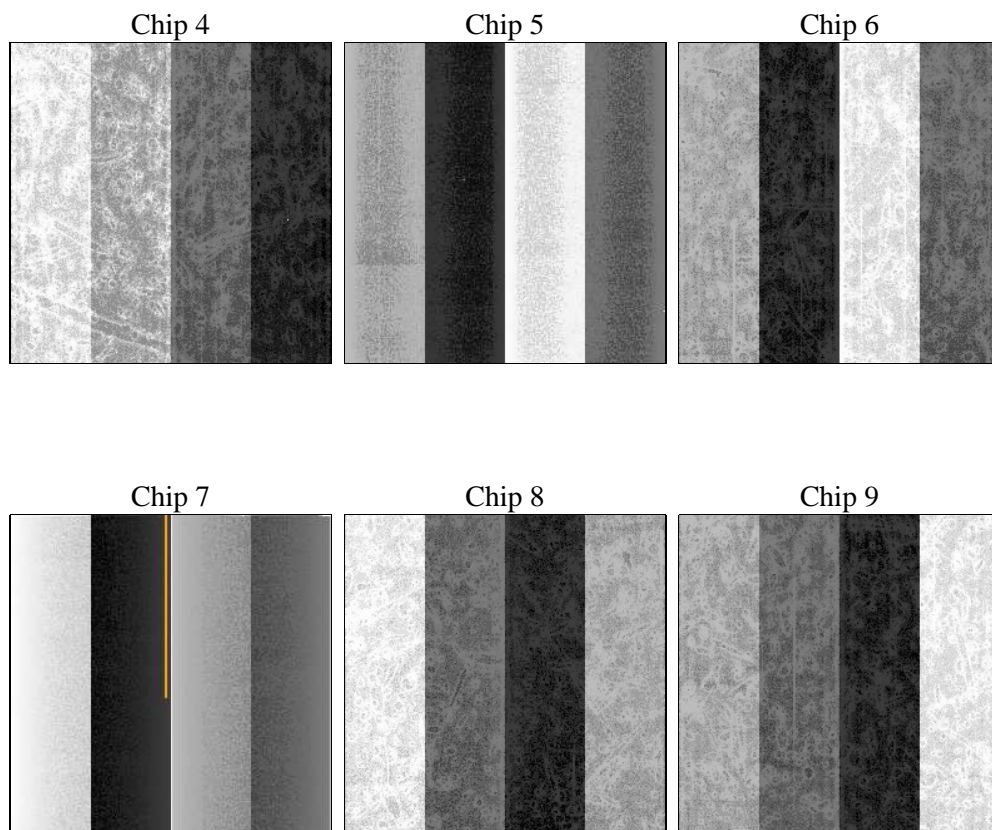
## 2 OBI

### 2.1 OBI

#### 2.1.1 Images



#### 2.1.2 Bias



### 2.1.3 Parameters

obi_num	1	Obi number	sched_exp_time	0.0	[s] Scheduled observation exposure time
ascdsver	8.5.1	Processing system revision	ontime	8265.5999692082	Sum of GTIs [s]
caldsver	4.5.5	&#160	ontime4	6466.8577796221	Sum of GTIs [s]
date	2012-12-16T16:31:07	Date and time of file creation	ontime5	8265.5999692082	Sum of GTIs [s]
revision	3	Processing version of data	ontime6	6829.8477684259	Sum of GTIs [s]
			ontime7	8265.5999692082	Sum of GTIs [s]
			ontime8	7176.6316524148	Sum of GTIs [s]
			ontime9	6752.0639032423	Sum of GTIs [s]
			l1events	1490798	Number of level 1 events

### 2.1.4 Events

	ccd 4	ccd 5	ccd 6	ccd 7	ccd 8	ccd 9		ccd 4	ccd 5	ccd 6	ccd 7	ccd 8	ccd 9
level 1 events	213003	274485	233963	286278	258001	225068	grade 0 events	95613	47531	99698	56725	108640	96619
rejected events	49035	58498	50184	49199	57328	49411		44%	17%	42%	19%	42%	42%
rejected %	23%	21%	21%	17%	22%	21%	grade 1 events	711	217	492	176	553	543
								0%	0%	0%	0%	0%	0%
							grade 2 events	26040	78435	31778	51730	35157	30089
								12%	28%	13%	18%	13%	13%
							grade 3 events	10870	12087	11465	23834	13050	11401
								5%	4%	4%	8%	5%	5%
							grade 4 events	10841	12035	11460	23461	13175	11281
								5%	4%	4%	8%	5%	5%
							grade 5 events	2915	9083	3150	8828	4015	3412
								1%	3%	1%	3%	1%	1%
							grade 6 events	20682	65973	29444	81426	30740	26348
								9%	24%	12%	28%	11%	11%
							grade 7 events	45331	49124	46476	40098	52671	45375
								21%	17%	19%	14%	20%	20%

## 2.2 Compared Parameters

Parameter	Planned	Actual
Instrument	ACIS	ACIS
Detector	ACIS-456789	ACIS-456789
Grating	NONE	NONE
Data mode	FAINT	FAINT
Observation mode	SECONDARY	SECONDARY
[deg] Pointing RA	0	125.9790024473872
[deg] Pointing Dec	0	30.97774449896521
[deg] Pointing Roll	0.0	198.1589640098504
[mm] SIM focus pos	-0.684267	-0.6828225247311905
[mm] SIM defocus	0	0.8505141146731063
[mm] SIM translation stage pos	-190.132523	250.4635187648994
[mm] SIM translation stage offset	0	-0.007540371344731511
[s] Observation start time (MET)	223239100.04132	223239099.01638
Observation start date	2005-01-27T18:51:40	2005-01-27T18:51:39
[s] Observation end time (MET)	223262238.392362	223262237.36742
Observation end date	2005-01-28T01:17:18	2005-01-28T01:17:17
Read mode	TIMED	TIMED

Parameter	Planned	Actual
Obspar format version number	7	7
Obspar file type	PREDICTED	ACTUAL
Obspar update status	NONE	UPDATED
On-chip summing requested	N	N
Subarray requested	NONE	NONE
Alternating exposures requested	N	N
[s] Primary exposure time	3.2	3.2

## 2.3 Star Slots

## 2.4 FID Slots

## A Summary

### A.1 Status

V&V Scientist	Jen Lauer
V&V Date (YYYY-MM-DD)	2013.01.09
V&V Edition	1
V&V Disposition and Status	OK
V&V Charge Time	8.2655999692082

### A.2 Comments