

V&V Reference Report

L2 ASCDS Version : 7.6.7

Observation 59813 - L2 Version 002
Chandra X-Ray Center

L2 Processing Date: Feb 21 2006

Contents

1	Front	2
2	OBI	3
2.1	OBI	3
2.1.1	Images	3
2.1.2	Bias	3
2.1.3	Parameters	4
2.1.4	Events	4
2.2	Compared Parameters	5
2.3	Aspect	6
2.4	Star Slots	8
2.5	FID Slots	8
A	Summary	9
A.1	Status	9
A.2	Comments	9

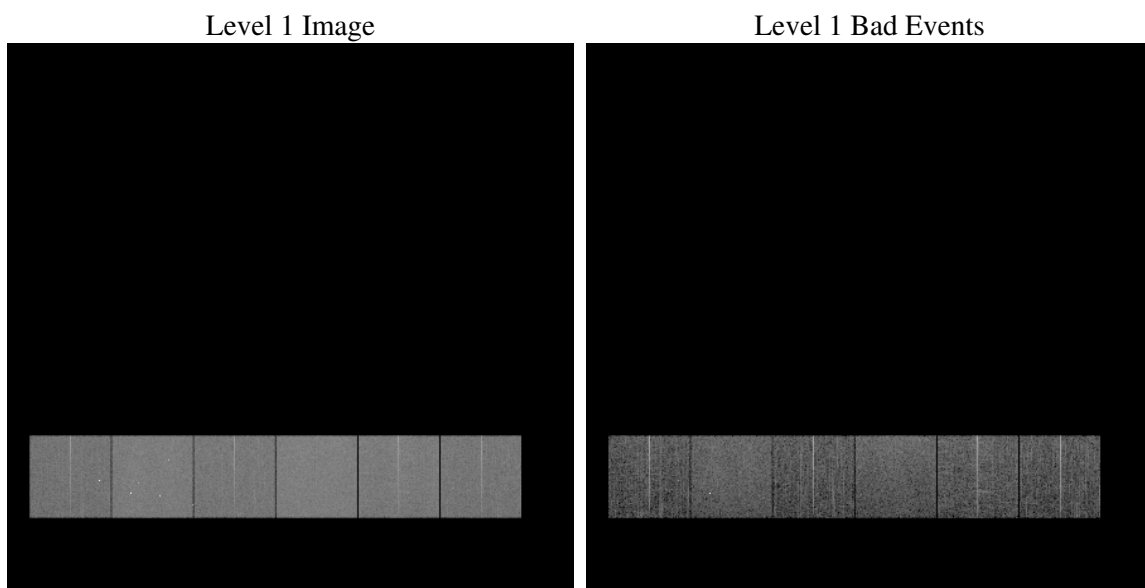
1 Front

seq_num	
obs_id	59813
title	ACIS-456789 diagnostics
observer	CHANDRA engineering request/realtime commanding
object	
dtcycle	0
cycle	P
ra_targ	0.0
dec_targ	0.0
ra_nom	140.46924795794
dec_nom	33.48733069552
roll_nom	173.42165504858
revision	2
ontime	6687.9999750853
livetime	6603.3124923706
ontime4	5291.1387505829
ontime5	6687.9999750853
ontime6	5670.3329947591
ontime7	6687.9999750853
ontime8	5861.5513094664
ontime9	5508.2846485674
l2events	882718

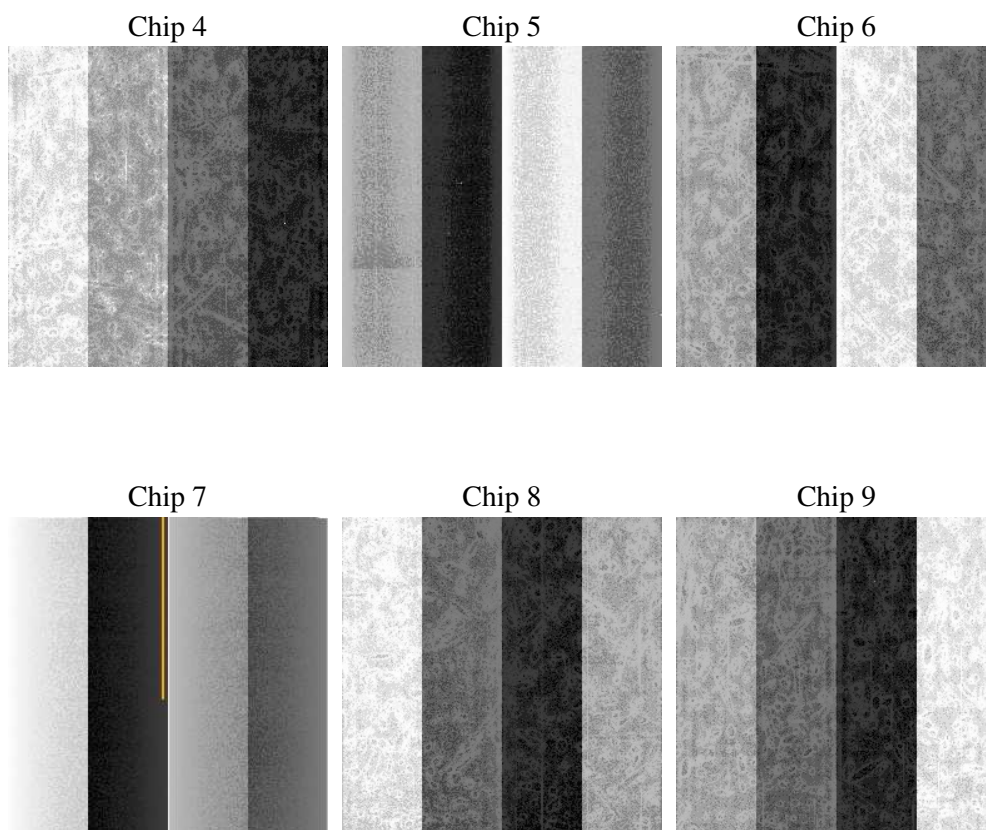
2 OBI

2.1 OBI

2.1.1 Images



2.1.2 Bias



2.1.3 Parameters

obi_num	0
ascdsver	7.6.7
caldbver	3.2.1
date	2006-02-22T02:20:17
revision	2

sched_exp_time	0.0
ontime	6802.8738674819
ontime4	5373.6028700769
ontime5	6802.8738674819
ontime6	5765.7609755993
ontime7	6802.8738674819
ontime8	5963.4612907469
ontime9	5600.4716889858
l1events	1231317

2.1.4 Events

	ccd 4	ccd 5	ccd 6	ccd 7	ccd 8	ccd 9
level 1 events	176391	223342	197426	235304	212541	186313
rejected events	43792	56548	45327	51922	50276	44519
rejected %	24%	25%	22%	22%	23%	23%

	ccd 4	ccd 5	ccd 6	ccd 7	ccd 8	ccd 9
grade 0 events	78396	18403	84097	31554	89104	79260
	44%	8%	42%	13%	41%	42%
grade 1 events	603	92	425	86	527	485
	0%	0%	0%	0%	0%	0%
grade 2 events	21254	79575	26662	56461	29295	24870
	12%	35%	13%	23%	13%	13%
grade 3 events	8969	5012	9639	13171	10769	9220
	5%	2%	4%	5%	5%	4%
grade 4 events	8782	5040	9770	13091	10705	9141
	4%	2%	4%	5%	5%	4%
grade 5 events	2401	5699	2828	5830	3215	2762
	1%	2%	1%	2%	1%	1%
grade 6 events	17306	61706	24571	72284	25281	21749
	9%	27%	12%	30%	11%	11%
grade 7 events	38680	47815	39434	42827	43645	38826
	21%	21%	19%	18%	20%	20%

2.2 Compared Parameters

Parameter	Planned	Actual	Parameter	Planned	Actual
Instrument	ACIS	ACIS	Obspar format version number	6	6
Detector	ACIS-456789	ACIS-456789	Obspar file type	PREDICTED	ACTUAL
Grating	NONE	NONE	Obspar update status	NONE	UPDATED
Data mode	FAINT	FAINT	On-chip summing requested	N	N
Observation mode	SECONDARY	SECONDARY	Subarray requested	NONE	NONE
Pointing RA	0	140.4692479579406	Alternating exposures requested	N	N
Pointing Dec	0	33.48733069551962	Primary exposure time	3.2	3.2
Pointing Roll	0.0	173.4216550485827			
SIM focus pos (mm)	-0.684267	-0.7809083437167272			
SIM defocus (mm)	0	0.7524282956875696			
SIM translation stage pos (mm)	-190.132523	250.4635187648994			
SIM translation stage offset (mm)	0	-0.007540371344731511			
Observation start time	223925105.922421	223925104.8974			
Observation start date	2005-02-04T17:25:06	2005-02-04T17:25:04			
Observation end time	223946696.5234	223946695.49838			
Observation end date	2005-02-04T23:24:57	2005-02-04T23:24:55			
Read mode	TIMED	TIMED			

2.3 Aspect

2.4 Star Slots

2.5 FID Slots

A Summary

A.1 Status

V&V Scientist	Jen Lauer
V&V Date (YYYY-MM-DD)	2006.02.22
V&V Edition	1
V&V Disposition and Status	OK
V&V Charge Time	6.68799997

A.2 Comments