

V&V Reference Report

L2 ASCDS Version : 7.6.7

Observation 59811 - L2 Version 002
Chandra X-Ray Center

L2 Processing Date: Feb 21 2006

Contents

1	Front	2
2	OBI	3
2.1	OBI	3
2.1.1	Images	3
2.1.2	Bias	3
2.1.3	Parameters	4
2.1.4	Events	4
2.2	Compared Parameters	5
2.3	Aspect	6
2.4	Star Slots	8
2.5	FID Slots	8
A	Summary	9
A.1	Status	9
A.2	Comments	9

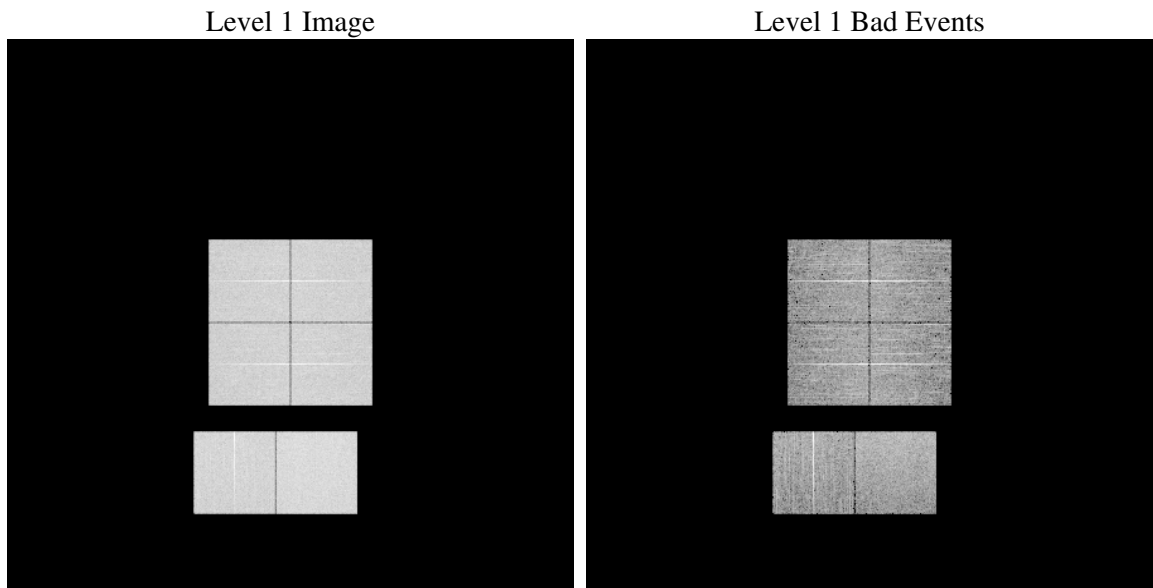
1 Front

seq_num	
obs_id	59811
title	ACIS-012367 diagnostics
observer	CHANDRA engineering request/realtime commanding
object	
dtcycle	0
cycle	P
ra_targ	0.0
dec_targ	0.0
ra_nom	142.46952499326
dec_nom	32.986992828503
roll_nom	174.12233587013
revision	2
ontime	7778.3066199124
livetime	7679.8130179571
ontime0	6870.8763279319
ontime1	6935.7370325029
ontime2	6679.7190620601
ontime3	6754.1194267571
ontime6	7130.213552773
ontime7	7778.3066199124
l2events	1052776

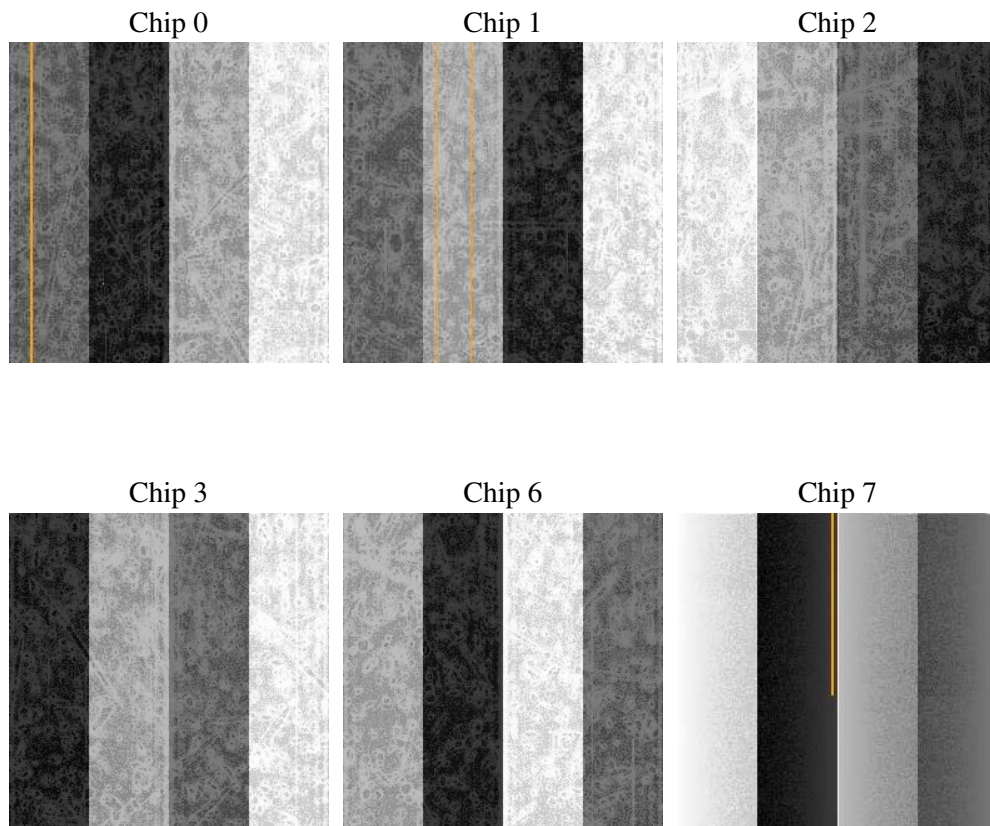
2 OBI

2.1 OBI

2.1.1 Images



2.1.2 Bias



2.1.3 Parameters

obi_num	0
ascdsver	7.6.7
caldsver	3.2.1
date	2006-02-22T02:51:42
revision	2

sched_exp_time	0.0
ontime	7778.4074411988
ontime0	6870.936109215
ontime1	6935.7557737827
ontime2	6679.7190620601
ontime3	6754.2612880468
ontime6	7130.213552773
ontime7	7778.4074411988
l1events	1404433

2.1.4 Events

	ccd 0	ccd 1	ccd 2	ccd 3	ccd 6	ccd 7
level 1 events	222887	224865	219856	224281	242159	270385
rejected events	47190	47579	46882	48549	51358	56477
rejected %	21%	21%	21%	21%	21%	20%

	ccd 0	ccd 1	ccd 2	ccd 3	ccd 6	ccd 7
grade 0 events	96717	97049	96669	98664	103217	35820
	43%	43%	43%	43%	42%	13%
grade 1 events	581	475	599	554	558	97
	0%	0%	0%	0%	0%	0%
grade 2 events	30772	31635	29308	30136	33030	64858
	13%	14%	13%	13%	13%	23%
grade 3 events	11479	11347	11319	11519	11914	15121
	5%	5%	5%	5%	4%	5%
grade 4 events	11290	11329	11517	11439	12010	14922
	5%	5%	5%	5%	4%	5%
grade 5 events	2954	3235	2837	3121	3286	6583
	1%	1%	1%	1%	1%	2%
grade 6 events	25439	25926	24161	23974	30632	83187
	11%	11%	10%	10%	12%	30%
grade 7 events	43655	43869	43446	44874	47512	49797
	19%	19%	19%	20%	19%	18%

2.2 Compared Parameters

Parameter	Planned	Actual	Parameter	Planned	Actual
Instrument	ACIS	ACIS	Obspar format version number	6	6
Detector	ACIS-012367	ACIS-012367	Obspar file type	PREDICTED	ACTUAL
Grating	NONE	NONE	Obspar update status	NONE	UPDATED
Data mode	FAINT	FAINT	On-chip summing requested	N	N
Observation mode	SECONDARY	SECONDARY	Subarray requested	NONE	NONE
Pointing RA	0	142.4695249932584	Alternating exposures requested	N	N
Pointing Dec	0	32.98699282850265	Primary exposure time	3.2	3.2
Pointing Roll	0.0	174.1223358701311			
SIM focus pos (mm)	-0.782348	-0.7809083437167272			
SIM defocus (mm)	0	0.7524282956875696			
SIM translation stage pos (mm)	-233.592463	250.466033080201			
SIM translation stage offset (mm)	0	-0.01005468664627074			
Observation start time	224115479.181047	224115478.15601			
Observation start date	2005-02-06T22:17:59	2005-02-06T22:17:58			
Observation end time	224126165.831532	224126164.8065			
Observation end date	2005-02-07T01:16:06	2005-02-07T01:16:04			
Read mode	TIMED	TIMED			

2.3 Aspect

2.4 Star Slots

2.5 FID Slots

A Summary

A.1 Status

V&V Scientist	Beth Sundheim
V&V Date (YYYY-MM-DD)	2006.02.22
V&V Edition	1
V&V Disposition and Status	OK
V&V Charge Time	7.77830661

A.2 Comments