

V&V Reference Report

L2 ASCDS Version : 8.5.1

Observation 59805 - L2 Version 3
Chandra X-Ray Center

L2 Processing Date : Dec 17 2012

Contents

1	Front	2
2	OBI	3
2.1	OBI	3
2.1.1	Images	3
2.1.2	Bias	3
2.1.3	Parameters	4
2.1.4	Events	4
2.2	Compared Parameters	5
2.3	Star Slots	6
2.4	FID Slots	6
A	Summary	7
A.1	Status	7
A.2	Comments	7

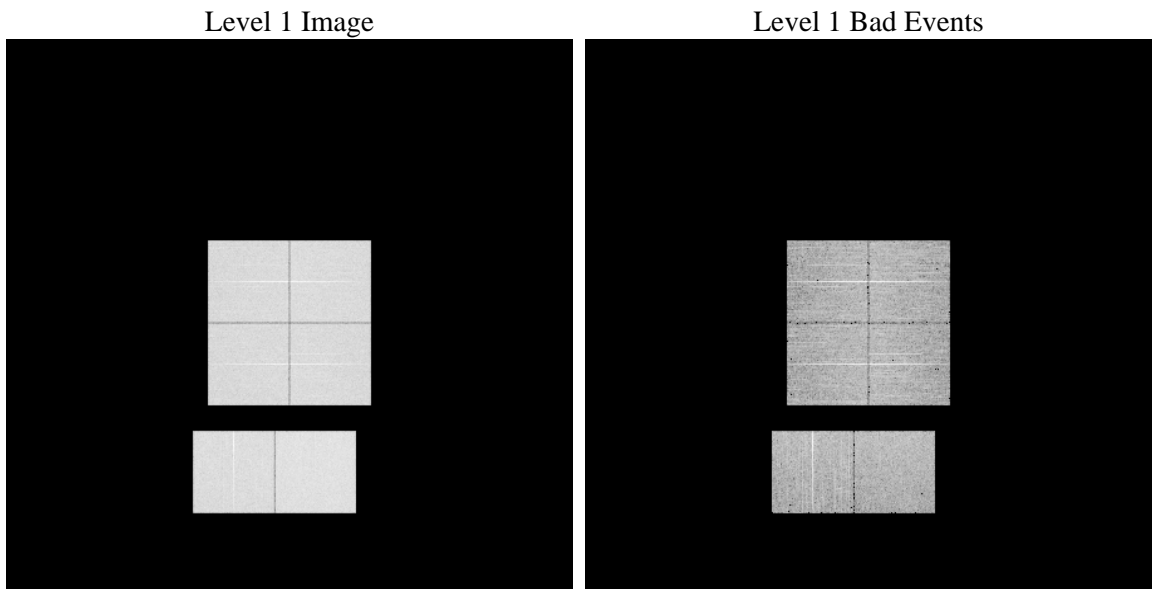
1 Front

seq_num	 	Sequence number
obs_id	59805	Observation id
title	ACIS-012367 diagnostics	Proposal title
observer	CHANDRA engineering request/realtime commanding	Principal investig
object	 	Source name
dtcycle	0	
cycle	P	events from which exps? Prim/Second/Both
ra_targ	0.0	Observer's specified target RA [deg]
dec_targ	0.0	Observer's specified target Dec [deg]
ra_nom	166.96930457328	Nominal RA [deg]
dec_nom	30.010591637855	Nominal Dec [deg]
roll_nom	125.41685163115	Nominal Roll [deg]
revision	3	Processing version of data
ontime	7804.7999709249	Sum of GTIs [s]
livetime	7705.9708942067	Livetime [s]
ontime0	6537.5771757066	Sum of GTIs [s]
ontime1	6741.7588444054	Sum of GTIs [s]
ontime2	6376.9368806481	Sum of GTIs [s]
ontime3	6401.4558250308	Sum of GTIs [s]
ontime6	6851.9520946741	Sum of GTIs [s]
ontime7	7804.7999709249	Sum of GTIs [s]
l2events	1072124	Number of level 2 events

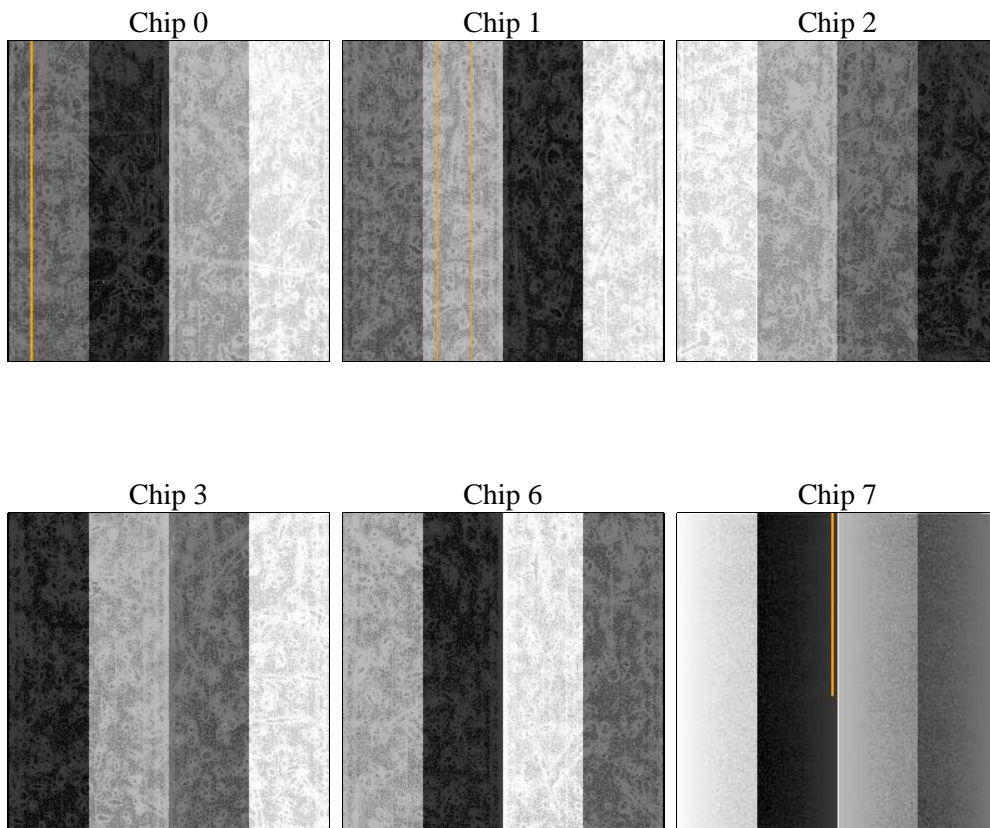
2 OBI

2.1 OBI

2.1.1 Images



2.1.2 Bias



2.1.3 Parameters

obi_num	1	Obi number	sched_exp_time	0.0	[s] Scheduled observation exposure time
ascdsver	8.5.1	Processing system revision	ontime	7804.7999709249	Sum of GTIs [s]
caldsver	4.5.5	 	ontime0	6537.5771757066	Sum of GTIs [s]
date	2012-12-17T10:43:35	Date and time of file creation	ontime1	6741.7588444054	Sum of GTIs [s]
revision	3	Processing version of data	ontime2	6376.9368806481	Sum of GTIs [s]
			ontime3	6401.4558250308	Sum of GTIs [s]
			ontime6	6851.9520946741	Sum of GTIs [s]
			ontime7	7804.7999709249	Sum of GTIs [s]
			l1events	1412018	Number of level 1 events

2.1.4 Events

	ccd 0	ccd 1	ccd 2	ccd 3	ccd 6	ccd 7		ccd 0	ccd 1	ccd 2	ccd 3	ccd 6	ccd 7
level 1 events	220789	229454	218691	222166	243946	276972	grade 0 events	96446	98450	96046	98014	103589	54942
rejected events	45436	47385	46980	47853	51306	46986		43%	42%	43%	44%	42%	19%
rejected %	20%	20%	21%	21%	21%	16%	grade 1 events	563	480	612	622	500	162
								0%	0%	0%	0%	0%	0%
							grade 2 events	30432	33009	28346	29250	33383	51039
								13%	14%	12%	13%	13%	18%
							grade 3 events	11472	11528	11204	11060	11840	21871
								5%	5%	5%	4%	4%	7%
							grade 4 events	11127	11332	11269	11232	11810	21983
								5%	4%	5%	5%	4%	7%
							grade 5 events	2914	3016	2696	2959	3204	8179
								1%	1%	1%	1%	1%	2%
							grade 6 events	25876	27750	24846	24757	32018	80151
								11%	12%	11%	11%	13%	28%
							grade 7 events	41959	43889	43672	44272	47602	38645
								19%	19%	19%	19%	19%	13%

2.2 Compared Parameters

Parameter	Planned	Actual
Instrument	ACIS	ACIS
Detector	ACIS-012367	ACIS-012367
Grating	NONE	NONE
Data mode	FAINT	FAINT
Observation mode	SECONDARY	SECONDARY
[deg] Pointing RA	0	166.9693045732841
[deg] Pointing Dec	0	30.01059163785504
[deg] Pointing Roll	0.0	125.4168516311451
[mm] SIM focus pos	-0.782348	-0.7809083437167272
[mm] SIM defocus	0	0.7524282956875696
[mm] SIM translation stage pos	-233.592463	250.4635187648994
[mm] SIM translation stage offset	0	-0.007540371344731511
[s] Observation start time (MET)	224572385.251676	224572384.22668
Observation start date	2005-02-12T05:13:05	2005-02-12T05:13:04
[s] Observation end time (MET)	224609826.453369	224609825.42837
Observation end date	2005-02-12T15:37:06	2005-02-12T15:37:05
Read mode	TIMED	TIMED

Parameter	Planned	Actual
Obspar format version number	7	7
Obspar file type	PREDICTED	ACTUAL
Obspar update status	NONE	UPDATED
On-chip summing requested	N	N
Subarray requested	NONE	NONE
Alternating exposures requested	N	N
[s] Primary exposure time	3.2	3.2

2.3 Star Slots

2.4 FID Slots

A Summary

A.1 Status

V&V Scientist	Jen Lauer
V&V Date (YYYY-MM-DD)	2013.01.10
V&V Edition	1
V&V Disposition and Status	OK
V&V Charge Time	7.8047999709249

A.2 Comments