

V&V Reference Report

L2 ASCDS Version : 7.6.7

Observation 59804 - L2 Version 002
Chandra X-Ray Center

L2 Processing Date: Feb 22 2006

Contents

1	Front	2
2	OBI	3
2.1	OBI	3
2.1.1	Images	3
2.1.2	Bias	3
2.1.3	Parameters	4
2.1.4	Events	4
2.2	Compared Parameters	5
2.3	Aspect	6
2.4	Star Slots	8
2.5	FID Slots	8
A	Summary	9
A.1	Status	9
A.2	Comments	9

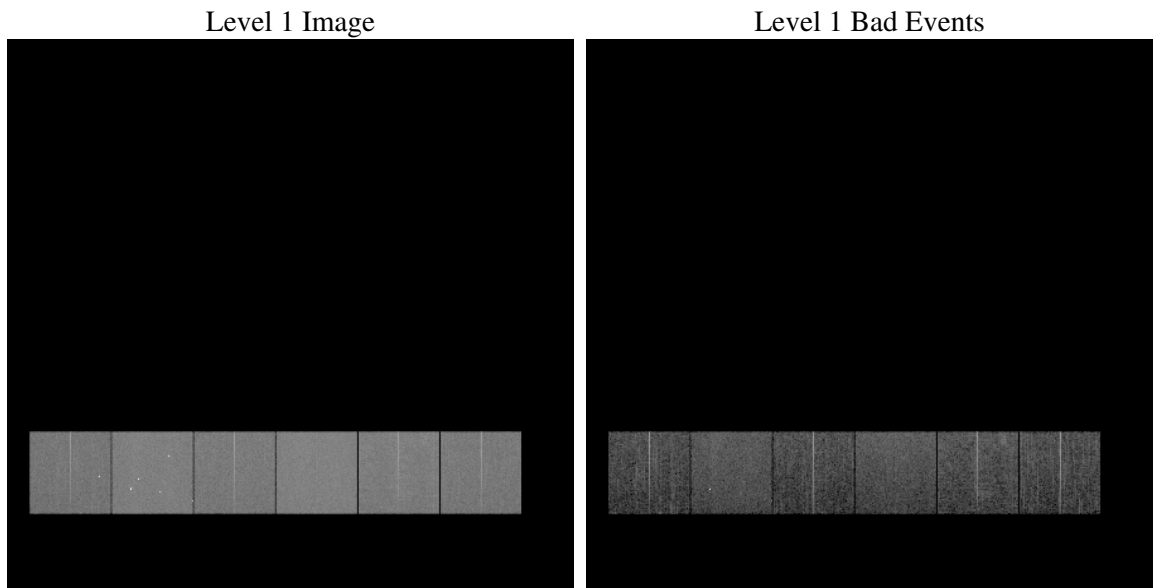
1 Front

seq_num	
obs_id	59804
title	ACIS-456789 diagnostics
observer	CHANDRA engineering request/realtime commanding
object	
dtcycle	0
cycle	P
ra_targ	0.0
dec_targ	0.0
ra_nom	128.53050557596
dec_nom	-7.5017206822658
roll_nom	319.92461490887
revision	2
ontime	8278.3999691606
livetime	8173.573884097
ontime4	6541.2352830768
ontime5	8278.3999691606
ontime6	6993.0319969058
ontime7	8278.3999691606
ontime8	7271.8382029235
ontime9	6910.7068166435
l2events	1088096

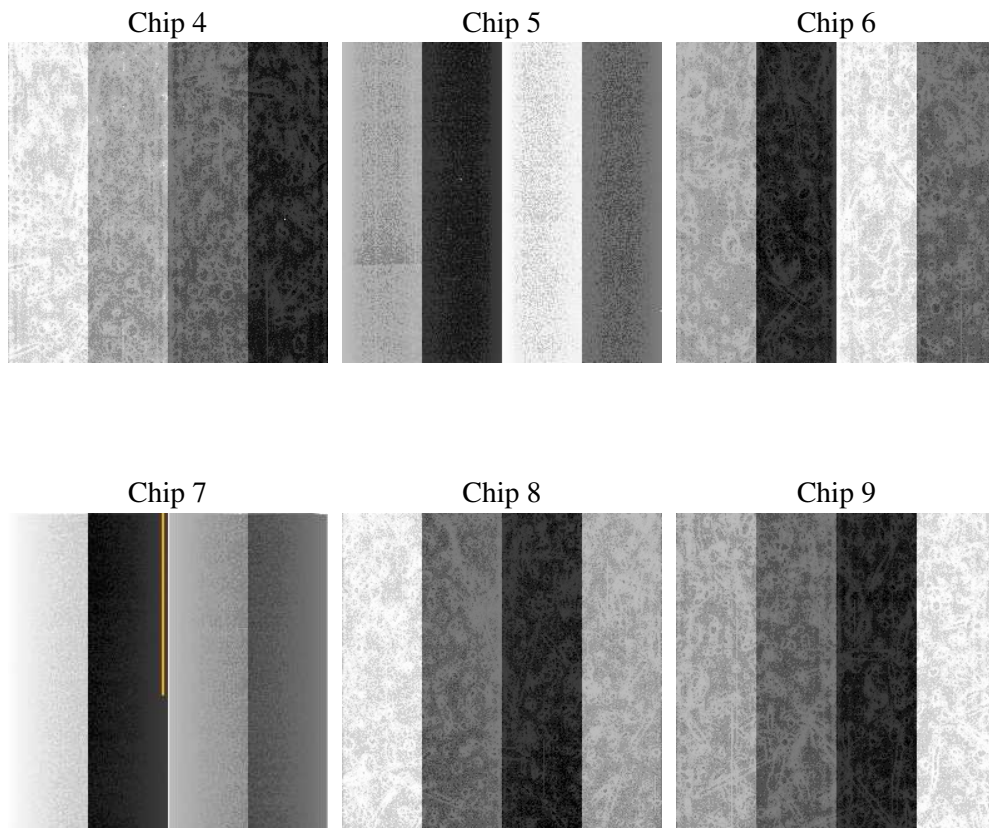
2 OBI

2.1 OBI

2.1.1 Images



2.1.2 Bias



2.1.3 Parameters

obi_num	1
ascdsver	7.6.7
caldbver	3.2.1
date	2006-02-23T02:30:54
revision	2

sched_exp_time	0.0
ontime	8280.7762344182
ontime4	6543.6115483344
ontime5	8280.7762344182
ontime6	6994.107498616
ontime7	8280.7762344182
ontime8	7272.8316246569
ontime9	6913.0830819011
l1events	1492809

2.1.4 Events

	ccd 4	ccd 5	ccd 6	ccd 7	ccd 8	ccd 9
level 1 events	212776	273521	236118	284367	257485	228542
rejected events	49888	64524	49863	59175	57694	51493
rejected %	23%	23%	21%	20%	22%	22%

	ccd 4	ccd 5	ccd 6	ccd 7	ccd 8	ccd 9
grade 0 events	94559	25688	101241	38246	108491	97316
	44%	9%	42%	13%	42%	42%
grade 1 events	686	140	529	135	577	569
	0%	0%	0%	0%	0%	0%
grade 2 events	25866	95904	32206	68285	34755	30337
	12%	35%	13%	24%	13%	13%
grade 3 events	10838	6540	11625	15973	13362	11483
	5%	2%	4%	5%	5%	5%
grade 4 events	10824	6320	11601	15800	13337	11374
	5%	2%	4%	5%	5%	4%
grade 5 events	2932	6333	3293	7104	4119	3566
	1%	2%	1%	2%	1%	1%
grade 6 events	20801	74545	29582	86888	29846	26539
	9%	27%	12%	30%	11%	11%
grade 7 events	46270	58051	46041	51936	52998	47358
	21%	21%	19%	18%	20%	20%

2.2 Compared Parameters

Parameter	Planned	Actual	Parameter	Planned	Actual
Instrument	ACIS	ACIS	Obspar format version number	6	6
Detector	ACIS-456789	ACIS-456789	Obspar file type	PREDICTED	ACTUAL
Grating	NONE	NONE	Obspar update status	NONE	UPDATED
Data mode	FAINT	FAINT	On-chip summing requested	N	N
Observation mode	SECONDARY	SECONDARY	Subarray requested	NONE	NONE
Pointing RA	0	128.5305055759573	Alternating exposures requested	N	N
Pointing Dec	0	-7.50172068226581	Primary exposure time	3.2	3.2
Pointing Roll	0.0	319.9246149088691			
SIM focus pos (mm)	-0.684267	-0.7809083437167272			
SIM defocus (mm)	0	0.7524282956875696			
SIM translation stage pos (mm)	-190.132523	250.4635187648994			
SIM translation stage offset (mm)	0	-0.007540371344731511			
Observation start time	224609826.453369	224609825.42837			
Observation start date	2005-02-12T15:37:06	2005-02-12T15:37:05			
Observation end time	224633881.154457	224633880.12946			
Observation end date	2005-02-12T22:18:01	2005-02-12T22:18:00			
Read mode	TIMED	TIMED			

2.3 Aspect

2.4 Star Slots

2.5 FID Slots

A Summary

A.1 Status

V&V Scientist	Jen Lauer
V&V Date (YYYY-MM-DD)	2006.02.23
V&V Edition	1
V&V Disposition and Status	OK
V&V Charge Time	8.27839996

A.2 Comments