

# V&V Reference Report

## L2 ASCDS Version : 8.5.1

Observation 59769 - L2 Version 3  
Chandra X-Ray Center

L2 Processing Date : Dec 18 2012

## Contents

<b>1</b>	<b>Front</b>	<b>2</b>
<b>2</b>	<b>OBI</b>	<b>3</b>
2.1	OBI . . . . .	3
2.1.1	Images . . . . .	3
2.1.2	Bias . . . . .	3
2.1.3	Parameters . . . . .	4
2.1.4	Events . . . . .	4
2.2	Compared Parameters . . . . .	5
2.3	Star Slots . . . . .	6
2.4	FID Slots . . . . .	6
<b>A</b>	<b>Summary</b>	<b>7</b>
A.1	Status . . . . .	7
A.2	Comments . . . . .	7

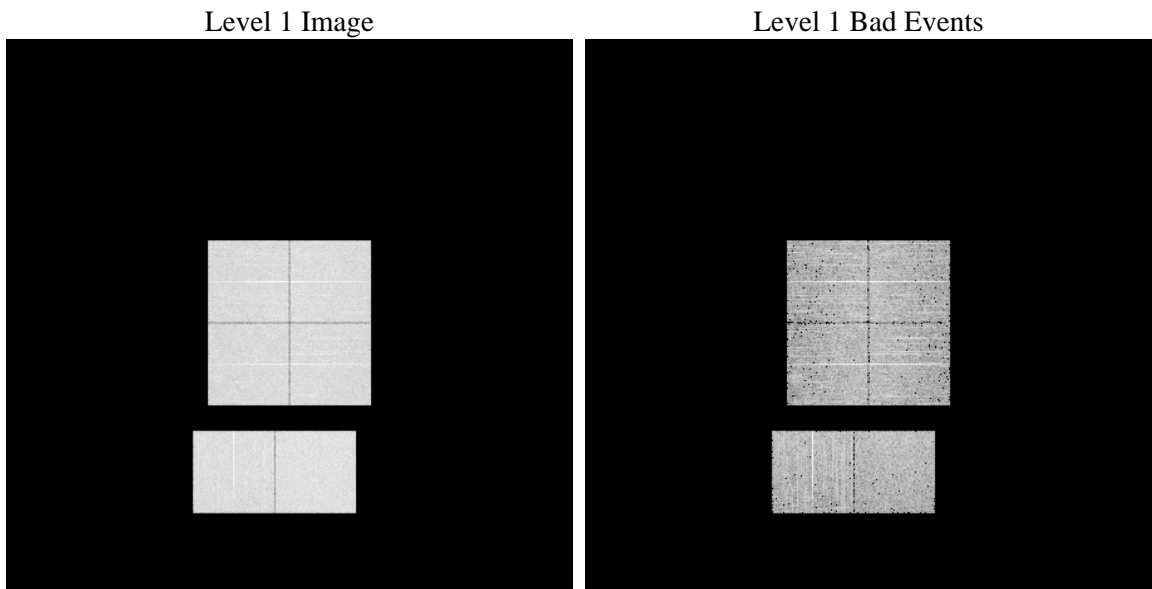
# 1 Front

seq_num	&#160	Sequence number
obs_id	59769	Observation id
title	ACIS-012367 diagnostics	Proposal title
observer	CHANDRA engineering request/realtime commanding	Principal investig
object	&#160	Source name
dtcycle	0	&#160
cycle	P	events from which exps? Prim/Second/Both
ra_targ	0.0	Observer's specified target RA [deg]
dec_targ	0.0	Observer's specified target Dec [deg]
ra_nom	192.9791447188	Nominal RA [deg]
dec_nom	13.020207530694	Nominal Dec [deg]
roll_nom	102.27728761789	Nominal Roll [deg]
revision	3	Processing version of data
ontime	4821.5909196734	Sum of GTIs [s]
livetime	4760.537032235	Livetime [s]
ontime0	4309.474602282	Sum of GTIs [s]
ontime1	4494.1694303453	Sum of GTIs [s]
ontime2	4186.2349225283	Sum of GTIs [s]
ontime3	4299.8337118626	Sum of GTIs [s]
ontime6	4494.0874900222	Sum of GTIs [s]
ontime7	4821.5909196734	Sum of GTIs [s]
l2events	652706	Number of level 2 events

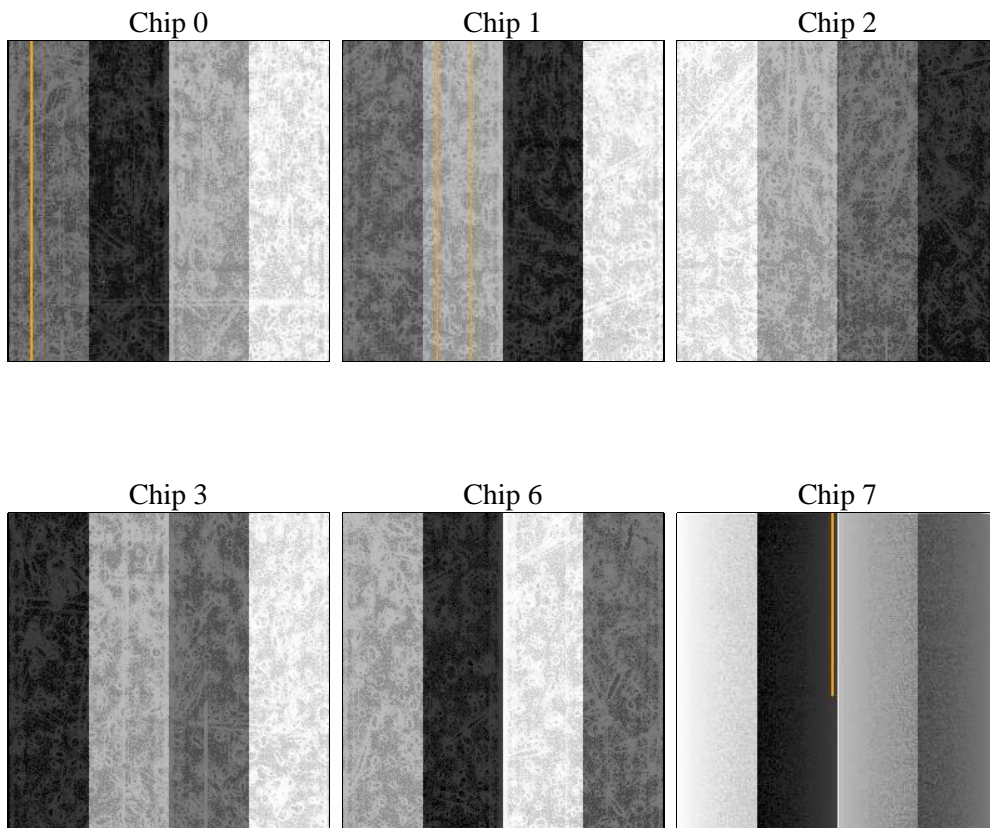
## 2 OBI

### 2.1 OBI

#### 2.1.1 Images



#### 2.1.2 Bias



### 2.1.3 Parameters

obi_num	0	Obi number	sched_exp_time	0.0	[s] Scheduled observation exposure time
ascdsver	8.5.1	Processing system revision	ontime	4821.5909196734	Sum of GTIs [s]
caldsver	4.5.5	&#160	ontime0	4309.474602282	Sum of GTIs [s]
date	2012-12-18T07:16:34	Date and time of file creation	ontime1	4494.1694303453	Sum of GTIs [s]
revision	3	Processing version of data	ontime2	4186.2349225283	Sum of GTIs [s]
			ontime3	4299.8337118626	Sum of GTIs [s]
			ontime6	4494.0874900222	Sum of GTIs [s]
			ontime7	4821.5909196734	Sum of GTIs [s]
			l1events	879153	Number of level 1 events

### 2.1.4 Events

	ccd 0	ccd 1	ccd 2	ccd 3	ccd 6	ccd 7		ccd 0	ccd 1	ccd 2	ccd 3	ccd 6	ccd 7
level 1 events	140229	144601	136954	140291	151943	165135	grade 0 events	59581	61475	59415	61151	63341	31333
rejected events	32331	32107	31308	31923	35020	30447		42%	42%	43%	43%	41%	18%
rejected %	23%	22%	22%	22%	23%	18%	grade 1 events	349	314	346	387	310	106
								0%	0%	0%	0%	0%	0%
							grade 2 events	18851	20287	17576	18178	20286	29513
								13%	14%	12%	12%	13%	17%
							grade 3 events	6838	7144	6806	7135	7275	13214
								4%	4%	4%	5%	4%	8%
							grade 4 events	6985	7134	6884	6995	7172	12914
								4%	4%	5%	4%	4%	7%
							grade 5 events	1824	1979	1810	1993	2126	5261
								1%	1%	1%	1%	1%	3%
							grade 6 events	15643	16454	14965	14909	18849	47714
								11%	11%	10%	10%	12%	28%
							grade 7 events	30158	29814	29152	29543	32584	25080
								21%	20%	21%	21%	21%	15%

## 2.2 Compared Parameters

Parameter	Planned	Actual
Instrument	ACIS	ACIS
Detector	ACIS-012367	ACIS-012367
Grating	NONE	NONE
Data mode	FAINT	FAINT
Observation mode	SECONDARY	SECONDARY
[deg] Pointing RA	0	192.9791447188033
[deg] Pointing Dec	0	13.02020753069383
[deg] Pointing Roll	0.0	102.2772876178883
[mm] SIM focus pos	-0.782348	-0.7809083437167272
[mm] SIM defocus	0	0.7524282956875696
[mm] SIM translation stage pos	-233.592463	250.466033080201
[mm] SIM translation stage offset	0	-0.01005468664627074
[s] Observation start time (MET)	226397375.284303	226397374.2593
Observation start date	2005-03-05T08:09:35	2005-03-05T08:09:34
[s] Observation end time (MET)	226414673.185087	226414672.16008
Observation end date	2005-03-05T12:57:53	2005-03-05T12:57:52
Read mode	TIMED	TIMED

Parameter	Planned	Actual
Obspar format version number	7	7
Obspar file type	PREDICTED	ACTUAL
Obspar update status	NONE	UPDATED
On-chip summing requested	N	N
Subarray requested	NONE	NONE
Alternating exposures requested	N	N
[s] Primary exposure time	3.2	3.2

## **2.3 Star Slots**

## **2.4 FID Slots**

## A Summary

### A.1 Status

V&V Scientist	Jen Lauer
V&V Date (YYYY-MM-DD)	2013.01.10
V&V Edition	1
V&V Disposition and Status	OK
V&V Charge Time	4.8215909196734

### A.2 Comments