

# V&V Reference Report

## L2 ASCDS Version : 7.6.7

Observation 59767 - L2 Version 002  
Chandra X-Ray Center

L2 Processing Date: Feb 25 2006

## Contents

<b>1</b>	<b>Front</b>	<b>2</b>
<b>2</b>	<b>OBI</b>	<b>3</b>
2.1	OBI . . . . .	3
2.1.1	Images . . . . .	3
2.1.2	Bias . . . . .	3
2.1.3	Parameters . . . . .	4
2.1.4	Events . . . . .	4
2.2	Compared Parameters . . . . .	5
2.3	Aspect . . . . .	6
2.4	Star Slots . . . . .	8
2.5	FID Slots . . . . .	8
<b>A</b>	<b>Summary</b>	<b>9</b>
A.1	Status . . . . .	9
A.2	Comments . . . . .	9

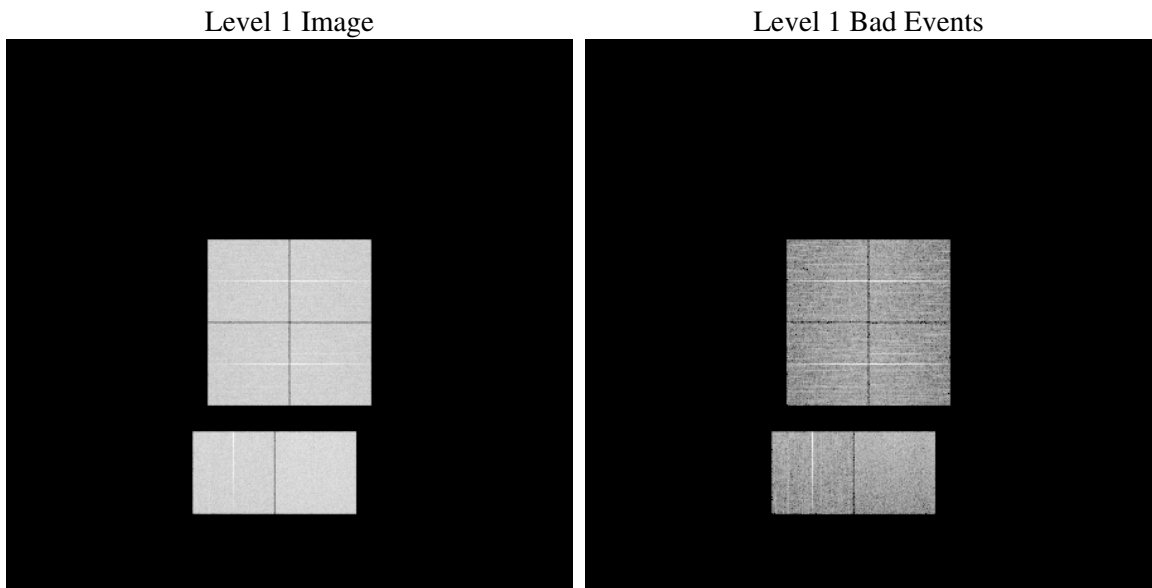
# 1 Front

seq_num	&#160
obs_id	59767
title	ACIS-012367 diagnostics
observer	CHANDRA engineering request/realtime commanding
object	&#160
dtcycle	0
cycle	P
ra_targ	0.0
dec_targ	0.0
ra_nom	337.44909505066
dec_nom	-57.007355344364
roll_nom	168.68730111899
revision	2
ontime	8284.3977946043
livetime	8179.4957614635
ontime0	7412.6212544143
ontime1	7470.9990211129
ontime2	7130.7394597828
ontime3	7308.8281467259
ontime6	7769.249777019
ontime7	8284.3977946043
l2events	1109496

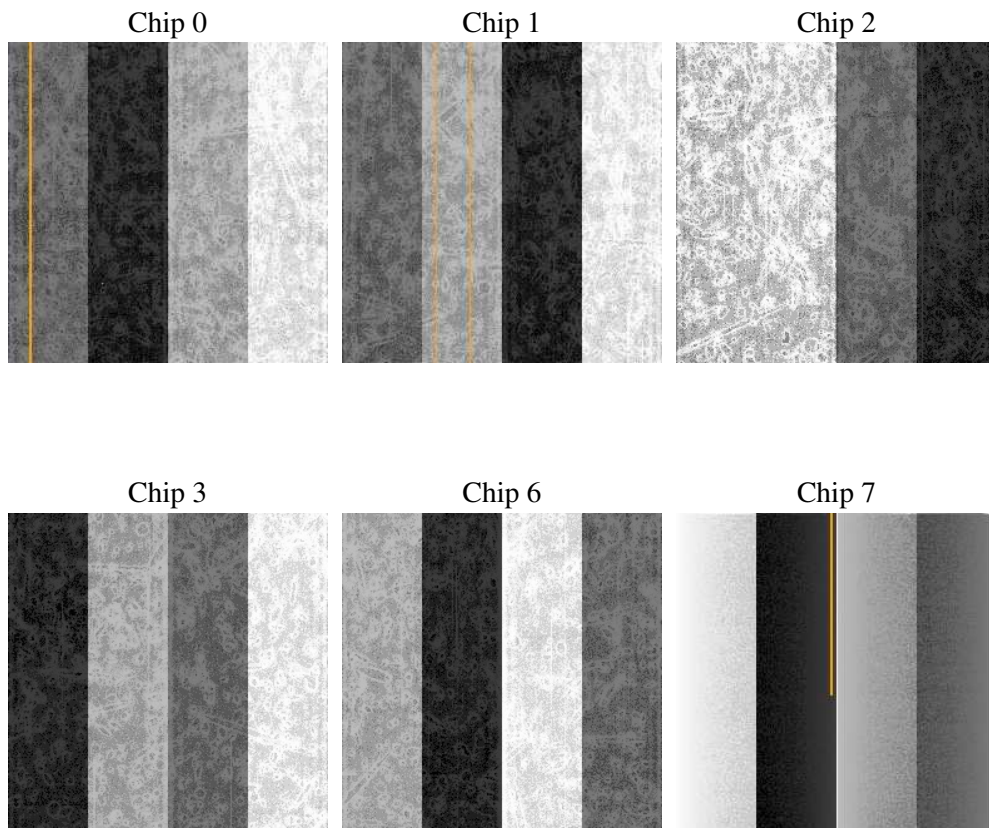
## 2 OBI

### 2.1 OBI

#### 2.1.1 Images



#### 2.1.2 Bias



### 2.1.3 Parameters

obi_num	0
ascdsver	7.6.7
caldbver	3.2.1
date	2006-02-25T18:31:45
revision	2

sched_exp_time	0.0
ontime	8287.2323052585
ontime0	7415.4147250652
ontime1	7473.7514517605
ontime2	7133.4508504272
ontime3	7311.7036973834
ontime6	7771.9201276898
ontime7	8287.2323052585
l1events	1492263

### 2.1.4 Events

	ccd 0	ccd 1	ccd 2	ccd 3	ccd 6	ccd 7
level 1 events	236822	239216	232938	240052	259016	284219
rejected events	51690	51616	52725	53884	54999	61326
rejected %	21%	21%	22%	22%	21%	21%

	ccd 0	ccd 1	ccd 2	ccd 3	ccd 6	ccd 7
grade 0 events	101833	102446	100760	103724	110693	37089
	42%	42%	43%	43%	42%	13%
grade 1 events	625	538	608	650	556	111
	0%	0%	0%	0%	0%	0%
grade 2 events	32142	33493	30517	31975	35129	67561
	13%	14%	13%	13%	13%	23%
grade 3 events	11973	12057	11718	12235	12775	15612
	5%	5%	5%	5%	4%	5%
grade 4 events	11932	12078	11726	12306	12788	15311
	5%	5%	5%	5%	4%	5%
grade 5 events	3150	3359	3063	3451	3738	7139
	1%	1%	1%	1%	1%	2%
grade 6 events	27328	27613	25564	26006	32729	87412
	11%	11%	10%	10%	12%	30%
grade 7 events	47839	47632	48982	49705	50608	53984
	20%	19%	21%	20%	19%	18%

## 2.2 Compared Parameters

Parameter	Planned	Actual	Parameter	Planned	Actual
Instrument	ACIS	ACIS	Obspar format version number	6	6
Detector	ACIS-012367	ACIS-012367	Obspar file type	PREDICTED	ACTUAL
Grating	NONE	NONE	Obspar update status	NONE	UPDATED
Data mode	FAINT	FAINT	On-chip summing requested	N	N
Observation mode	SECONDARY	SECONDARY	Subarray requested	NONE	NONE
Pointing RA	0	337.4490950506625	Alternating exposures requested	N	N
Pointing Dec	0	-57.00735534436357	Primary exposure time	3.2	3.2
Pointing Roll	0.0	168.6873011189932			
SIM focus pos (mm)	-0.782348	-0.7809083437167272			
SIM defocus (mm)	0	0.7524282956875696			
SIM translation stage pos (mm)	-233.592463	250.466033080201			
SIM translation stage offset (mm)	0	-0.01005468664627074			
Observation start time	226436169.486061	226436168.46105			
Observation start date	2005-03-05T18:56:09	2005-03-05T18:56:08			
Observation end time	226459213.537106	226459212.5121			
Observation end date	2005-03-06T01:20:14	2005-03-06T01:20:12			
Read mode	TIMED	TIMED			

## 2.3 Aspect



## **2.4 Star Slots**

## **2.5 FID Slots**



## A Summary

### A.1 Status

V&V Scientist	Doug Morgan
V&V Date (YYYY-MM-DD)	2006.02.26
V&V Edition	1
V&V Disposition and Status	OK
V&V Charge Time	8.28439779

### A.2 Comments