

V&V Reference Report

L2 ASCDS Version : 8.5.1.1

Observation 59738 - L2 Version 3
Chandra X-Ray Center

L2 Processing Date : Dec 21 2012

Contents

1	Front	2
2	OBI	3
2.1	OBI	3
2.1.1	Images	3
2.1.2	Bias	3
2.1.3	Parameters	4
2.1.4	Events	4
2.2	Compared Parameters	5
2.3	Star Slots	6
2.4	FID Slots	6
A	Summary	7
A.1	Status	7
A.2	Comments	7

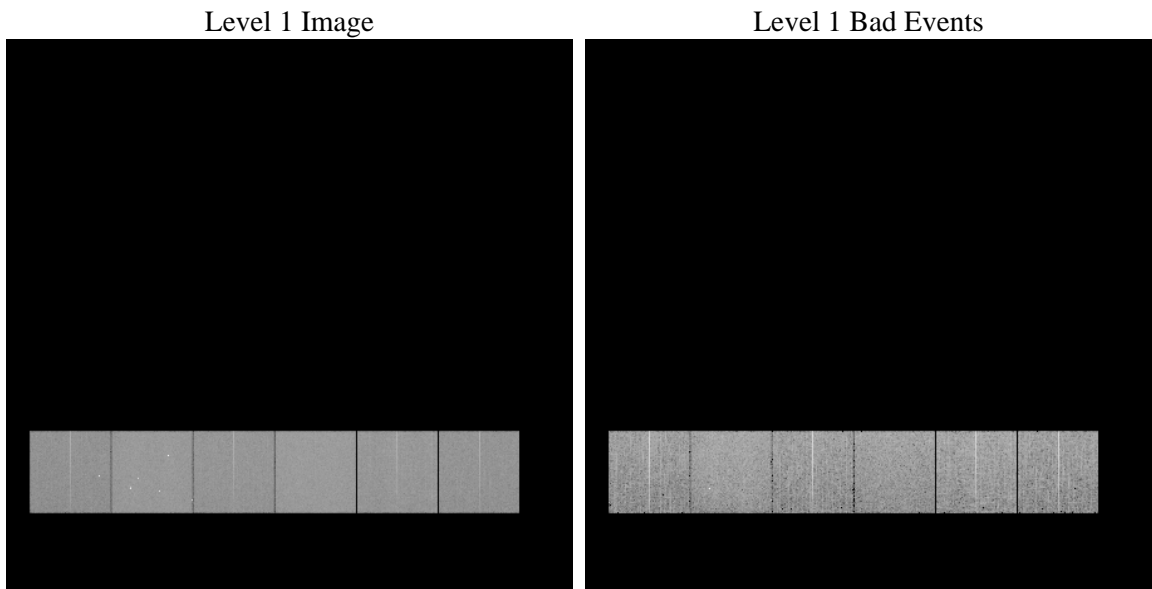
1 Front

seq_num	 	Sequence number
obs_id	59738	Observation id
title	ACIS-456789 diagnostics	Proposal title
observer	CHANDRA engineering request/realtime commanding	Principal investig
object	 	Source name
dtcycle	0	
cycle	P	events from which exps? Prim/Second/Both
ra_targ	0.0	Observer's specified target RA [deg]
dec_targ	0.0	Observer's specified target Dec [deg]
ra_nom	180.51743666862	Nominal RA [deg]
dec_nom	-10.977029523787	Nominal Dec [deg]
roll_nom	20.406759823617	Nominal Roll [deg]
revision	3	Processing version of data
ontime	7795.1999709606	Sum of GTIs [s]
livetime	7696.4924552224	Livetime [s]
ontime4	6048.3180941641	Sum of GTIs [s]
ontime5	7795.1999709606	Sum of GTIs [s]
ontime6	6699.7530609071	Sum of GTIs [s]
ontime7	7795.1999709606	Sum of GTIs [s]
ontime8	6803.4636622369	Sum of GTIs [s]
ontime9	6437.2345379293	Sum of GTIs [s]
l2events	1030669	Number of level 2 events

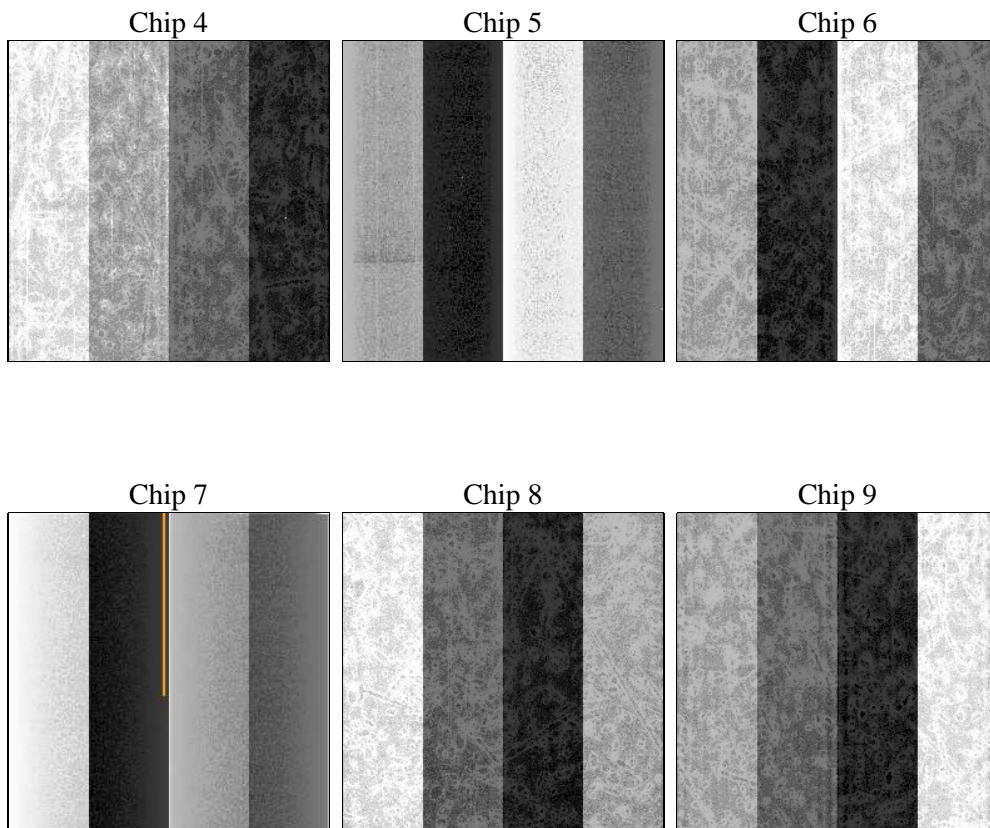
2 OBI

2.1 OBI

2.1.1 Images



2.1.2 Bias



2.1.3 Parameters

obi_num	0	Obi number	sched_exp_time	0.0	[s] Scheduled observation exposure time
ascdsver	8.5.1.1	Processing system revision	ontime	7795.1999709606	Sum of GTIs [s]
caldsver	4.5.5	 	ontime4	6048.3180941641	Sum of GTIs [s]
date	2012-12-21T04:06:28	Date and time of file creation	ontime5	7795.1999709606	Sum of GTIs [s]
revision	3	Processing version of data	ontime6	6699.7530609071	Sum of GTIs [s]
			ontime7	7795.1999709606	Sum of GTIs [s]
			ontime8	6803.4636622369	Sum of GTIs [s]
			ontime9	6437.2345379293	Sum of GTIs [s]
			l1events	1406878	Number of level 1 events

2.1.4 Events

	ccd 4	ccd 5	ccd 6	ccd 7	ccd 8	ccd 9		ccd 4	ccd 5	ccd 6	ccd 7	ccd 8	ccd 9
level 1 events	198412	259010	226763	269492	241798	211403	grade 0 events	87379	46767	96365	52696	99515	89404
rejected events	48319	55175	49295	48553	56783	48360		44%	18%	42%	19%	41%	42%
rejected %	24%	21%	21%	18%	23%	22%	grade 1 events	684	267	478	186	551	510
								0%	0%	0%	0%	0%	0%
							grade 2 events	23745	71547	30892	48581	32783	28247
								11%	27%	13%	18%	13%	13%
							grade 3 events	9997	11925	11138	22047	12046	10517
								5%	4%	4%	8%	4%	4%
							grade 4 events	9857	11790	10944	21841	12056	10412
								4%	4%	4%	8%	4%	4%
							grade 5 events	2826	8705	3279	8627	3914	3413
								1%	3%	1%	3%	1%	1%
							grade 6 events	19115	61806	28129	75774	28615	24463
								9%	23%	12%	28%	11%	11%
							grade 7 events	44809	46203	45538	39740	52318	44437
								22%	17%	20%	14%	21%	21%

2.2 Compared Parameters

Parameter	Planned	Actual
Instrument	ACIS	ACIS
Detector	ACIS-456789	ACIS-456789
Grating	NONE	NONE
Data mode	FAINT	FAINT
Observation mode	SECONDARY	SECONDARY
[deg] Pointing RA	0	180.5174366686199
[deg] Pointing Dec	0	-10.97702952378717
[deg] Pointing Roll	0.0	20.40675982361655
[mm] SIM focus pos	-0.684267	-0.6828225247311905
[mm] SIM defocus	0	0.8505141146731063
[mm] SIM translation stage pos	-190.132523	250.466033080201
[mm] SIM translation stage offset	0	-0.01005468664627074
[s] Observation start time (MET)	227313934.425841	227313933.40084
Observation start date	2005-03-15T22:45:34	2005-03-15T22:45:33
[s] Observation end time (MET)	227328624.726507	227328623.70151
Observation end date	2005-03-16T02:50:25	2005-03-16T02:50:23
Read mode	TIMED	TIMED

Parameter	Planned	Actual
Obspar format version number	7	7
Obspar file type	PREDICTED	ACTUAL
Obspar update status	NONE	UPDATED
On-chip summing requested	N	N
Subarray requested	NONE	NONE
Alternating exposures requested	N	N
[s] Primary exposure time	3.2	3.2

2.3 Star Slots

2.4 FID Slots

A Summary

A.1 Status

V&V Scientist	Jen Lauer
V&V Date (YYYY-MM-DD)	2013.01.04
V&V Edition	1
V&V Disposition and Status	OK
V&V Charge Time	7.7951999709606

A.2 Comments