

V&V Reference Report

L2 ASCDS Version : 7.6.7

Observation 59738 - L2 Version 002
Chandra X-Ray Center

L2 Processing Date: Feb 27 2006

Contents

1	Front	2
2	OBI	3
2.1	OBI	3
2.1.1	Images	3
2.1.2	Bias	3
2.1.3	Parameters	4
2.1.4	Events	4
2.2	Compared Parameters	5
2.3	Aspect	6
2.4	Star Slots	8
2.5	FID Slots	8
A	Summary	9
A.1	Status	9
A.2	Comments	9

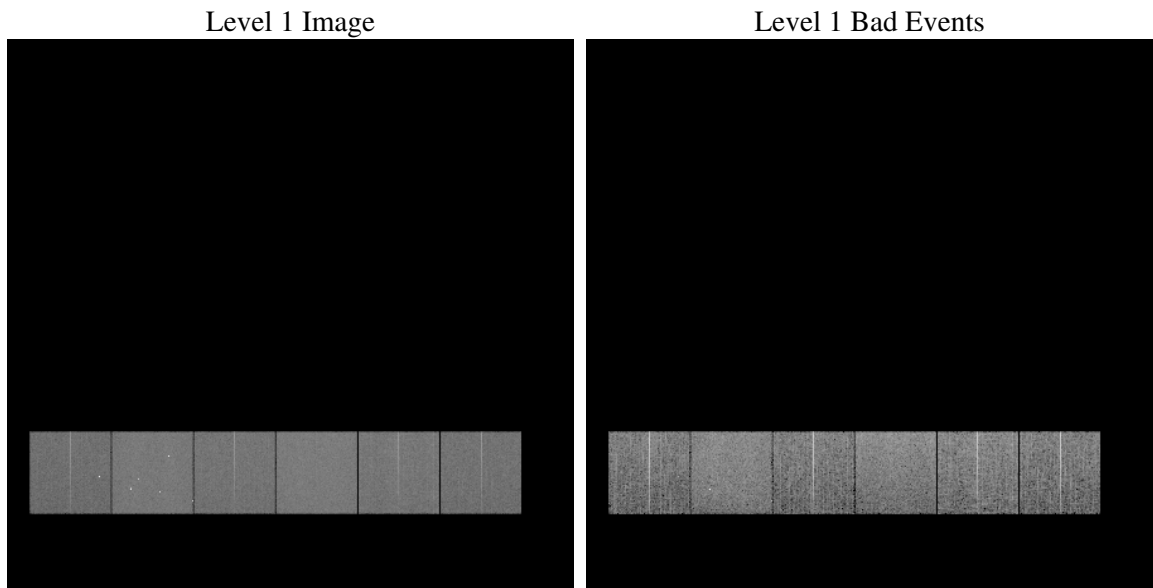
1 Front

seq_num	
obs_id	59738
title	ACIS-456789 diagnostics
observer	CHANDRA engineering request/realtime commanding
object	
dtcycle	0
cycle	P
ra_targ	0.0
dec_targ	0.0
ra_nom	180.51741014066
dec_nom	-10.977039177362
roll_nom	20.406754765522
revision	2
ontime	7794.6737779081
livetime	7695.9729251431
ontime4	6047.9150211215
ontime5	7794.7148179114
ontime6	6699.3089478612
ontime7	7794.6737779081
ontime8	6803.1016291678
ontime9	6436.6673048735
l2events	1016362

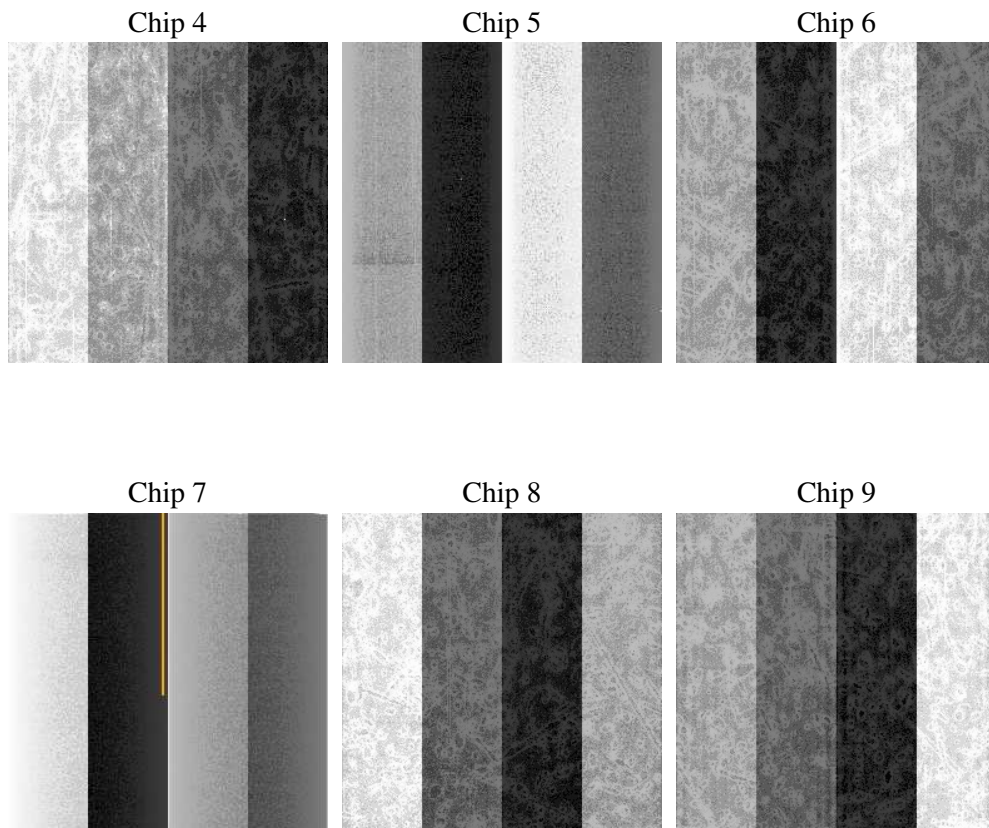
2 OBI

2.1 OBI

2.1.1 Images



2.1.2 Bias



2.1.3 Parameters

obi_num	0
ascdsver	7.6.7
caldsver	3.2.1
date	2006-02-27T17:38:14
revision	2

sched_exp_time	0.0
ontime	7797.8520034254
ontime4	6050.9701266289
ontime5	7797.8520034254
ontime6	6702.4050933719
ontime7	7797.8520034254
ontime8	6806.1156947017
ontime9	6439.886570394
l1events	1406878

2.1.4 Events

	ccd 4	ccd 5	ccd 6	ccd 7	ccd 8	ccd 9
level 1 events	198412	259010	226763	269492	241798	211403
rejected events	48407	60753	49384	57437	56876	48441
rejected %	24%	23%	21%	21%	23%	22%

	ccd 4	ccd 5	ccd 6	ccd 7	ccd 8	ccd 9
grade 0 events	87373	25604	96358	36227	99513	89402
	44%	9%	42%	13%	41%	42%
grade 1 events	683	185	478	116	550	510
	0%	0%	0%	0%	0%	0%
grade 2 events	23751	89959	30899	63794	32785	28249
	11%	34%	13%	23%	13%	13%
grade 3 events	9997	6313	11137	15133	12045	10516
	5%	2%	4%	5%	4%	4%
grade 4 events	9854	6184	10942	15011	12055	10411
	4%	2%	4%	5%	4%	4%
grade 5 events	2827	5958	3279	6814	3913	3411
	1%	2%	1%	2%	1%	1%
grade 6 events	19118	70273	28129	81981	28616	24466
	9%	27%	12%	30%	11%	11%
grade 7 events	44809	54534	45541	50416	52321	44438
	22%	21%	20%	18%	21%	21%

2.2 Compared Parameters

Parameter	Planned	Actual	Parameter	Planned	Actual
Instrument	ACIS	ACIS	Obspar format version number	6	6
Detector	ACIS-456789	ACIS-456789	Obspar file type	PREDICTED	ACTUAL
Grating	NONE	NONE	Obspar update status	NONE	UPDATED
Data mode	FAINT	FAINT	On-chip summing requested	N	N
Observation mode	SECONDARY	SECONDARY	Subarray requested	NONE	NONE
Pointing RA	0	180.5174101406647	Alternating exposures requested	N	N
Pointing Dec	0	-10.97703917736209	Primary exposure time	3.2	3.2
Pointing Roll	0.0	20.40675476552207			
SIM focus pos (mm)	-0.684267	-0.6828225247311905			
SIM defocus (mm)	0	0.8505141146731063			
SIM translation stage pos (mm)	-190.132523	250.466033080201			
SIM translation stage offset (mm)	0	-0.01005468664627074			
Observation start time	227313934.425841	227313933.40084			
Observation start date	2005-03-15T22:45:34	2005-03-15T22:45:33			
Observation end time	227328624.726507	227328623.70151			
Observation end date	2005-03-16T02:50:25	2005-03-16T02:50:23			
Read mode	TIMED	TIMED			

2.3 Aspect

2.4 Star Slots

2.5 FID Slots

A Summary

A.1 Status

V&V Scientist	Jen Lauer
V&V Date (YYYY-MM-DD)	2006.03.02
V&V Edition	1
V&V Disposition and Status	OK
V&V Charge Time	7.79467377

A.2 Comments