

V&V Reference Report

L2 ASCDS Version : 7.6.7

Observation 59732 - L2 Version 002
Chandra X-Ray Center

L2 Processing Date: Feb 27 2006

Contents

1	Front	2
2	OBI	3
2.1	OBI	3
2.1.1	Images	3
2.1.2	Bias	3
2.1.3	Parameters	4
2.1.4	Events	4
2.2	Compared Parameters	5
2.3	Aspect	6
2.4	Star Slots	8
2.5	FID Slots	8
A	Summary	9
A.1	Status	9
A.2	Comments	9

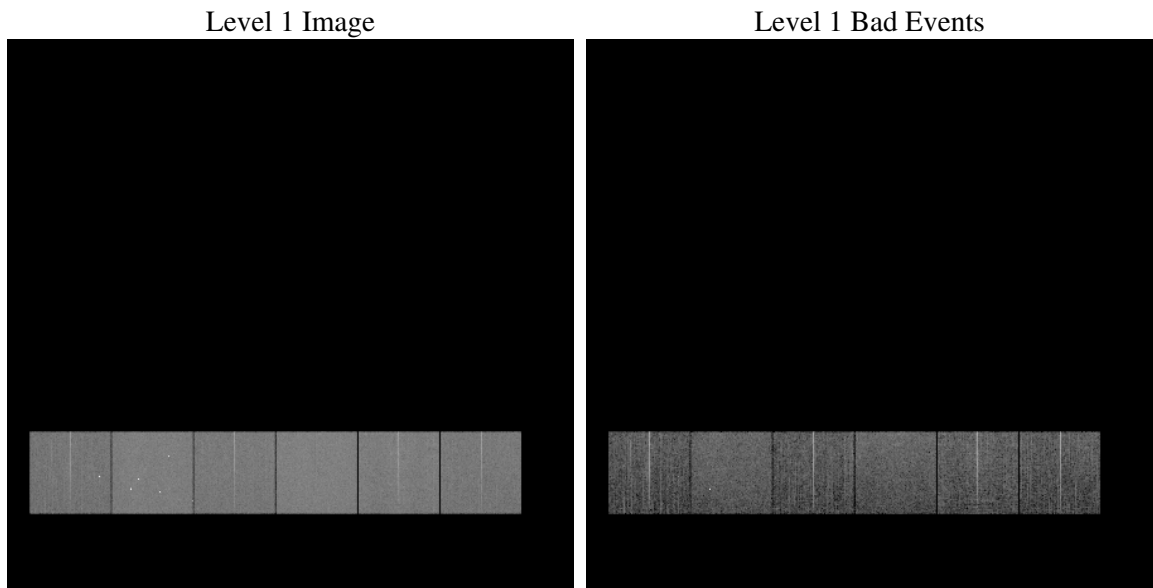
1 Front

seq_num	
obs_id	59732
title	ACIS-456789 diagnostics
observer	CHANDRA engineering request/realtime commanding
object	
dtcycle	0
cycle	P
ra_targ	0.0
dec_targ	0.0
ra_nom	328.00960529948
dec_nom	40.027616930814
roll_nom	42.209000942798
revision	2
ontime	8278.3999691606
livetime	8173.573884097
ontime4	6567.1734751463
ontime5	8278.3999691606
ontime6	7063.0400505364
ontime7	8278.3999691606
ontime8	7341.7626450062
ontime9	6952.8473902941
l2events	1074885

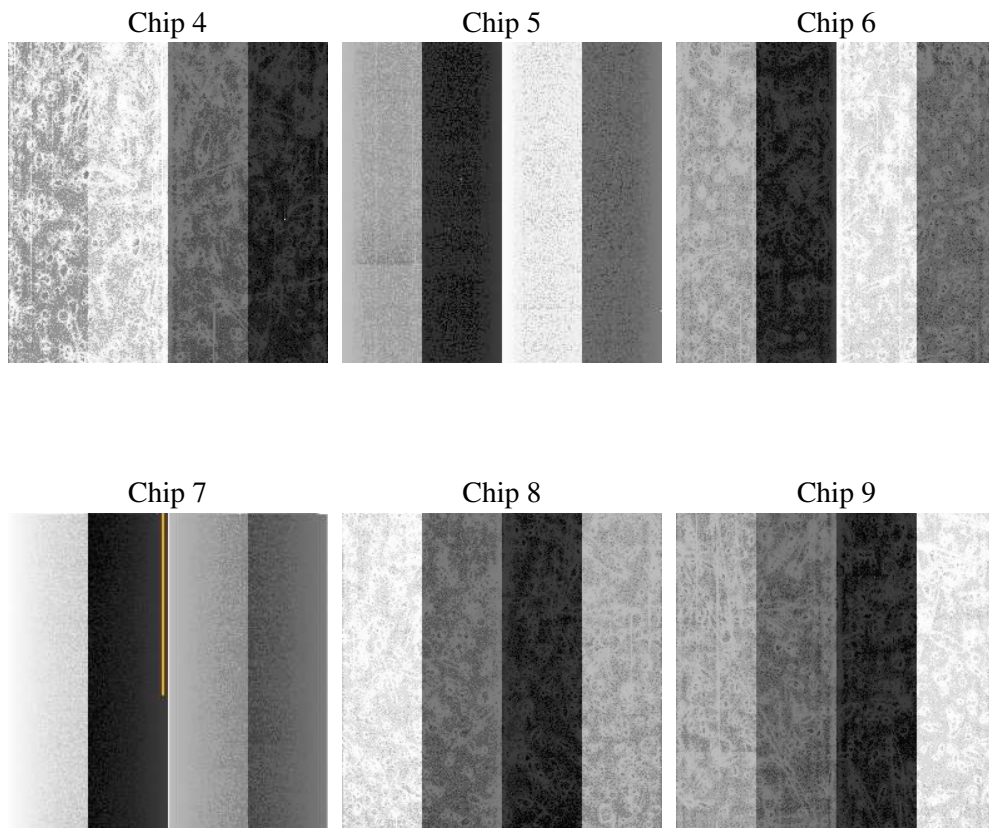
2 OBI

2.1 OBI

2.1.1 Images



2.1.2 Bias



2.1.3 Parameters

obi_num	0
ascdsver	7.6.7
caldsver	3.2.1
date	2006-02-27T18:17:16
revision	2

sched_exp_time	0.0
ontime	8280.7503255606
ontime4	6569.5238315463
ontime5	8280.7503255606
ontime6	7065.3904069364
ontime7	8280.7503255606
ontime8	7344.1130014062
ontime9	6955.1977466941
l1events	1492394

2.1.4 Events

	ccd 4	ccd 5	ccd 6	ccd 7	ccd 8	ccd 9
level 1 events	212655	273260	238354	281556	258618	227951
rejected events	52281	64510	53619	61167	60144	52573
rejected %	24%	23%	22%	21%	23%	23%

	ccd 4	ccd 5	ccd 6	ccd 7	ccd 8	ccd 9
grade 0 events	93042	26879	99970	35577	107626	96506
	43%	9%	41%	12%	41%	42%
grade 1 events	724	118	543	97	562	609
	0%	0%	0%	0%	0%	0%
grade 2 events	25575	95410	32173	67724	34512	29778
	12%	34%	13%	24%	13%	13%
grade 3 events	10789	6502	11668	15163	13079	11279
	5%	2%	4%	5%	5%	4%
grade 4 events	10587	6219	11466	14899	12913	11246
	4%	2%	4%	5%	4%	4%
grade 5 events	2911	6356	3357	6962	4226	3549
	1%	2%	1%	2%	1%	1%
grade 6 events	20381	73740	29458	87026	30344	26569
	9%	26%	12%	30%	11%	11%
grade 7 events	48646	58036	49719	54108	55356	48415
	22%	21%	20%	19%	21%	21%

2.2 Compared Parameters

Parameter	Planned	Actual	Parameter	Planned	Actual
Instrument	ACIS	ACIS	Obspar format version number	6	6
Detector	ACIS-456789	ACIS-456789	Obspar file type	PREDICTED	ACTUAL
Grating	NONE	NONE	Obspar update status	NONE	UPDATED
Data mode	FAINT	FAINT	On-chip summing requested	N	N
Observation mode	SECONDARY	SECONDARY	Subarray requested	NONE	NONE
Pointing RA	0	328.0096052994805	Alternating exposures requested	N	N
Pointing Dec	0	40.02761693081418	Primary exposure time	3.2	3.2
Pointing Roll	0.0	42.20900094279841			
SIM focus pos (mm)	-0.684267	-0.7809083437167272			
SIM defocus (mm)	0	0.7524282956875696			
SIM translation stage pos (mm)	-190.132523	250.466033080201			
SIM translation stage offset (mm)	0	-0.01005468664627074			
Observation start time	227576988.387771	227576987.36277			
Observation start date	2005-03-18T23:49:48	2005-03-18T23:49:47			
Observation end time	227600460.888836	227600459.86384			
Observation end date	2005-03-19T06:21:01	2005-03-19T06:20:59			
Read mode	TIMED	TIMED			

2.3 Aspect

2.4 Star Slots

2.5 FID Slots

A Summary

A.1 Status

V&V Scientist	Beth Sundheim
V&V Date (YYYY-MM-DD)	2006.02.27
V&V Edition	1
V&V Disposition and Status	OK
V&V Charge Time	8.27839996

A.2 Comments