

V&V Reference Report

L2 ASCDS Version : 8.5.1.1

Observation 59728 - L2 Version 3
Chandra X-Ray Center

L2 Processing Date : Dec 21 2012

Contents

1	Front	2
2	OBI	3
2.1	OBI	3
2.1.1	Images	3
2.1.2	Bias	3
2.1.3	Parameters	4
2.1.4	Events	4
2.2	Compared Parameters	5
2.3	Star Slots	6
2.4	FID Slots	6
A	Summary	7
A.1	Status	7
A.2	Comments	7

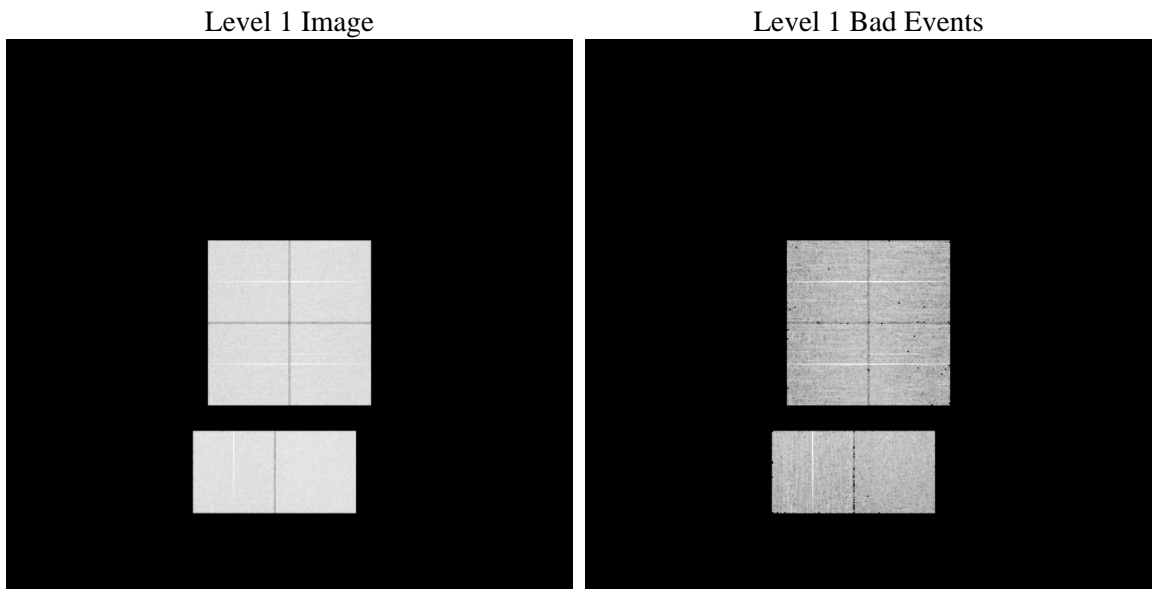
1 Front

seq_num	 	Sequence number
obs_id	59728	Observation id
title	ACIS-012367 diagnostics	Proposal title
observer	CHANDRA engineering request/realtime commanding	Principal investig
object	 	Source name
dtcycle	0	
cycle	P	events from which exps? Prim/Second/Both
ra_targ	0.0	Observer's specified target RA [deg]
dec_targ	0.0	Observer's specified target Dec [deg]
ra_nom	187.97139198114	Nominal RA [deg]
dec_nom	8.0036205657166	Nominal Dec [deg]
roll_nom	140.12368574204	Nominal Roll [deg]
revision	3	Processing version of data
ontime	8284.7999691367	Sum of GTIs [s]
livetime	8179.8928434199	Livetime [s]
ontime0	7474.5565957129	Sum of GTIs [s]
ontime1	7754.4080817699	Sum of GTIs [s]
ontime2	7257.4114964008	Sum of GTIs [s]
ontime3	7387.0501683652	Sum of GTIs [s]
ontime6	7886.1602029204	Sum of GTIs [s]
ontime7	8284.7999691367	Sum of GTIs [s]
l2events	1123455	Number of level 2 events

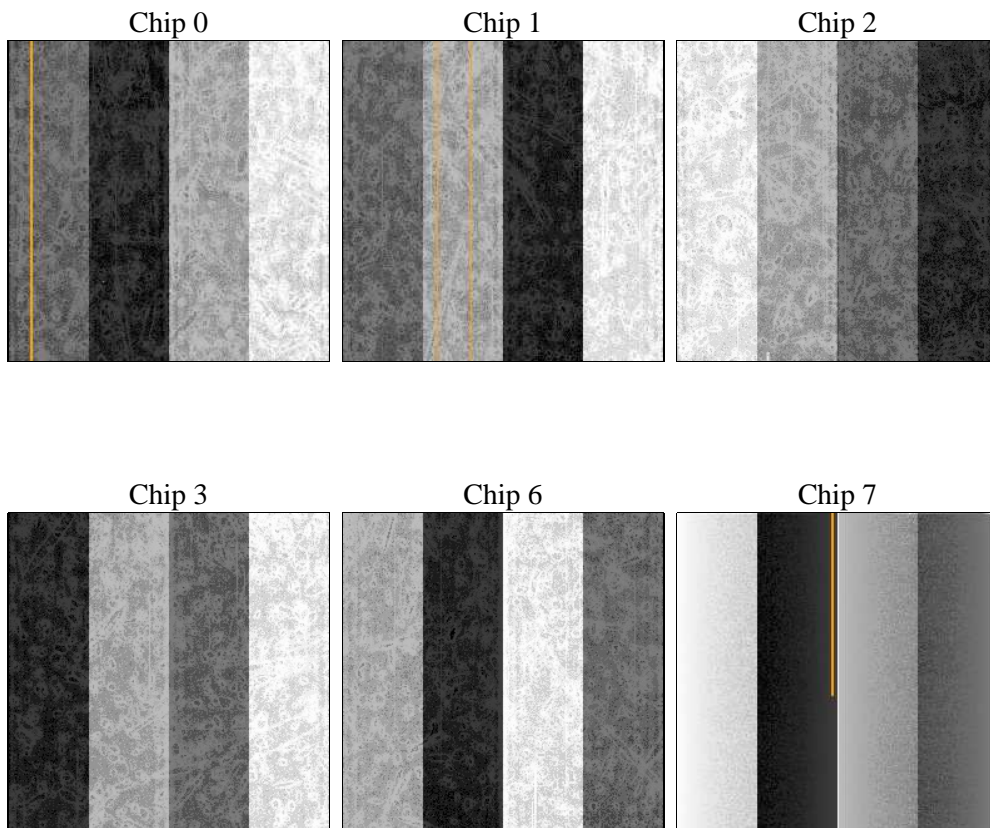
2 OBI

2.1 OBI

2.1.1 Images



2.1.2 Bias



2.1.3 Parameters

obi_num	0	Obi number	sched_exp_time	0.0	[s] Scheduled observation exposure time
ascdsver	8.5.1.1	Processing system revision	ontime	8284.7999691367	Sum of GTIs [s]
caldsver	4.5.5	 	ontime0	7474.5565957129	Sum of GTIs [s]
date	2012-12-21T06:10:26	Date and time of file creation	ontime1	7754.4080817699	Sum of GTIs [s]
revision	3	Processing version of data	ontime2	7257.4114964008	Sum of GTIs [s]
			ontime3	7387.0501683652	Sum of GTIs [s]
			ontime6	7886.1602029204	Sum of GTIs [s]
			ontime7	8284.7999691367	Sum of GTIs [s]
			l1events	1491585	Number of level 1 events

2.1.4 Events

	ccd 0	ccd 1	ccd 2	ccd 3	ccd 6	ccd 7		ccd 0	ccd 1	ccd 2	ccd 3	ccd 6	ccd 7
level 1 events	235737	244108	233036	237692	261587	279425	grade 0 events	101987	105018	100972	103751	111130	54878
rejected events	49870	51300	51487	52007	55859	49764		43%	43%	43%	43%	42%	19%
rejected %	21%	21%	22%	21%	21%	17%	grade 1 events	582	550	688	666	554	164
								0%	0%	0%	0%	0%	0%
							grade 2 events	32415	34579	30899	31772	35479	50225
								13%	14%	13%	13%	13%	17%
							grade 3 events	12209	12371	11941	12206	12850	22722
								5%	5%	5%	5%	4%	8%
							grade 4 events	12128	12458	12132	12182	13134	22699
								5%	5%	5%	5%	5%	8%
							grade 5 events	3192	3389	3011	3270	3613	8879
								1%	1%	1%	1%	1%	3%
							grade 6 events	27128	28382	25605	25774	33135	79137
								11%	11%	10%	10%	12%	28%
							grade 7 events	46096	47361	47788	48071	51692	40721
								19%	19%	20%	20%	19%	14%

2.2 Compared Parameters

Parameter	Planned	Actual
Instrument	ACIS	ACIS
Detector	ACIS-012367	ACIS-012367
Grating	NONE	NONE
Data mode	FAINT	FAINT
Observation mode	SECONDARY	SECONDARY
[deg] Pointing RA	0	187.9713919811354
[deg] Pointing Dec	0	8.003620565716647
[deg] Pointing Roll	0.0	140.1236857420444
[mm] SIM focus pos	-0.782348	-0.7809083437167272
[mm] SIM defocus	0	0.7524282956875696
[mm] SIM translation stage pos	-233.592463	250.466033080201
[mm] SIM translation stage offset	0	-0.01005468664627074
[s] Observation start time (MET)	227808958.198296	227808957.1733
Observation start date	2005-03-21T16:15:58	2005-03-21T16:15:57
[s] Observation end time (MET)	227831167.899304	227831166.87431
Observation end date	2005-03-21T22:26:08	2005-03-21T22:26:06
Read mode	TIMED	TIMED

Parameter	Planned	Actual
Obspar format version number	7	7
Obspar file type	PREDICTED	ACTUAL
Obspar update status	NONE	UPDATED
On-chip summing requested	N	N
Subarray requested	NONE	NONE
Alternating exposures requested	N	N
[s] Primary exposure time	3.2	3.2

2.3 Star Slots

2.4 FID Slots

A Summary

A.1 Status

V&V Scientist	Jen Lauer
V&V Date (YYYY-MM-DD)	2013.01.04
V&V Edition	1
V&V Disposition and Status	OK
V&V Charge Time	8.2847999691367

A.2 Comments