

V&V Reference Report

L2 ASCDS Version : 8.5.1.1

Observation 59720 - L2 Version 3
Chandra X-Ray Center

L2 Processing Date : Dec 21 2012

Contents

1	Front	2
2	OBI	3
2.1	OBI	3
2.1.1	Images	3
2.1.2	Bias	3
2.1.3	Parameters	4
2.1.4	Events	4
2.2	Compared Parameters	5
2.3	Star Slots	6
2.4	FID Slots	6
A	Summary	7
A.1	Status	7
A.2	Comments	7

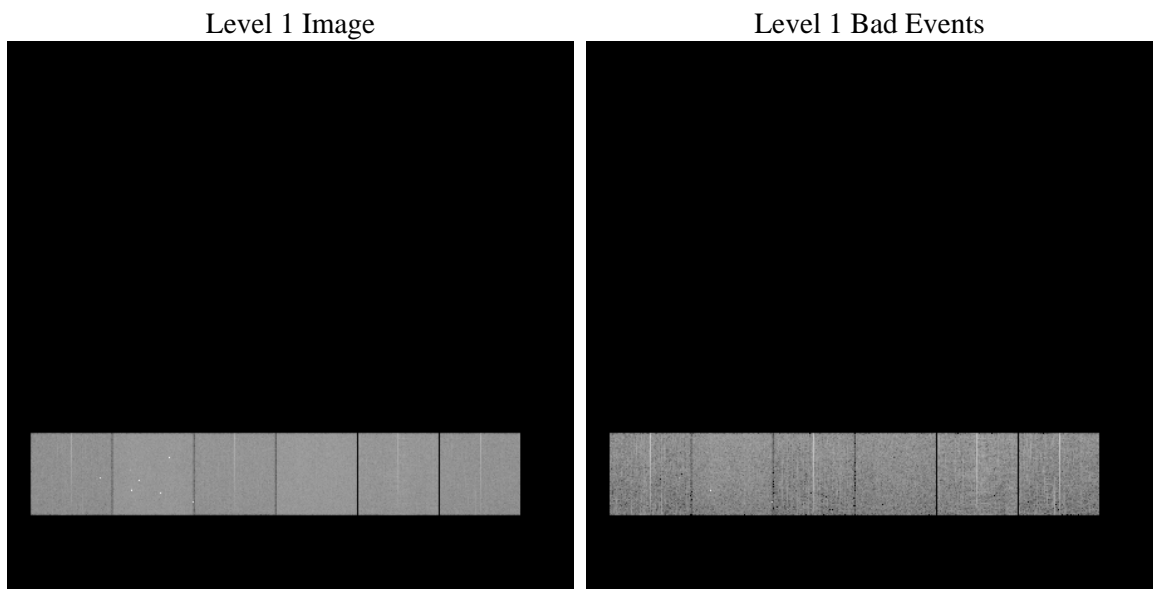
1 Front

seq_num	 	Sequence number
obs_id	59720	Observation id
title	ACIS-456789 diagnostics	Proposal title
observer	CHANDRA engineering request/realtime commanding	Principal investig
object	 	Source name
dtcycle	0	
cycle	P	events from which exps? Prim/Second/Both
ra_targ	0.0	Observer's specified target RA [deg]
dec_targ	0.0	Observer's specified target Dec [deg]
ra_nom	210.97875205283	Nominal RA [deg]
dec_nom	4.5181518488962	Nominal Dec [deg]
roll_nom	108.39723849009	Nominal Roll [deg]
revision	3	Processing version of data
ontime	7797.7857729197	Sum of GTIs [s]
livetime	7699.0455142001	Livetime [s]
ontime4	6073.4584980905	Sum of GTIs [s]
ontime5	7797.7447329164	Sum of GTIs [s]
ontime6	6656.8772291243	Sum of GTIs [s]
ontime7	7797.7857729197	Sum of GTIs [s]
ontime8	6848.0132066309	Sum of GTIs [s]
ontime9	6456.0590721369	Sum of GTIs [s]
l2events	1023312	Number of level 2 events

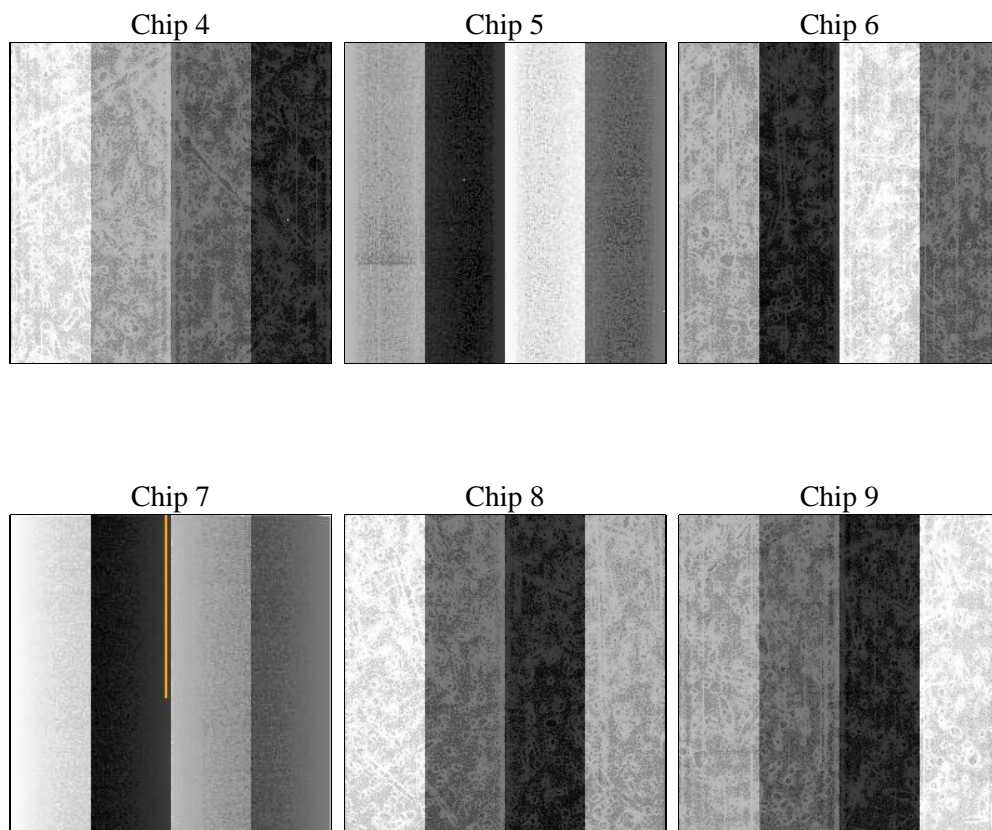
2 OBI

2.1 OBI

2.1.1 Images



2.1.2 Bias



2.1.3 Parameters

obi_num	0	Obi number	sched_exp_time	0.0	[s] Scheduled observation exposure time
ascdsver	8.5.1.1	Processing system revision	ontime	7797.7857729197	Sum of GTIs [s]
caldsver	4.5.5	 	ontime4	6073.4584980905	Sum of GTIs [s]
date	2012-12-21T08:31:37	Date and time of file creation	ontime5	7797.7447329164	Sum of GTIs [s]
revision	3	Processing version of data	ontime6	6656.8772291243	Sum of GTIs [s]
			ontime7	7797.7857729197	Sum of GTIs [s]
			ontime8	6848.0132066309	Sum of GTIs [s]
			ontime9	6456.0590721369	Sum of GTIs [s]
			l1events	1406884	Number of level 1 events

2.1.4 Events

	ccd 4	ccd 5	ccd 6	ccd 7	ccd 8	ccd 9		ccd 4	ccd 5	ccd 6	ccd 7	ccd 8	ccd 9
level 1 events	198009	261843	225035	267024	243648	211325	grade 0 events	87336	48095	94622	51994	100138	89509
rejected events	48662	55609	50634	48205	57708	48650		44%	18%	42%	19%	41%	42%
rejected %	24%	21%	22%	18%	23%	23%	grade 1 events	670	1023	503	150	555	540
								0%	0%	0%	0%	0%	0%
							grade 2 events	23332	73432	30177	47867	32933	27736
								11%	28%	13%	17%	13%	13%
							grade 3 events	9913	11478	11060	21554	12163	10344
								5%	4%	4%	8%	4%	4%
							grade 4 events	9846	11154	10778	21621	12379	10517
								4%	4%	4%	8%	5%	4%
							grade 5 events	2810	8569	3156	8475	3902	3370
								1%	3%	1%	3%	1%	1%
							grade 6 events	18920	62075	27764	75783	28327	24569
								9%	23%	12%	28%	11%	11%
							grade 7 events	45182	46017	46975	39580	53251	44740
								22%	17%	20%	14%	21%	21%

2.2 Compared Parameters

Parameter	Planned	Actual	Parameter	Planned	Actual
Instrument	ACIS	ACIS	Obspar format version number	7	7
Detector	ACIS-456789	ACIS-456789	Obspar file type	PREDICTED	ACTUAL
Grating	NONE	NONE	Obspar update status	NONE	UPDATED
Data mode	FAINT	FAINT	On-chip summing requested	N	N
Observation mode	SECONDARY	SECONDARY	Subarray requested	NONE	NONE
[deg] Pointing RA	0	210.9787520528332	Alternating exposures requested	N	N
[deg] Pointing Dec	0	4.518151848896181	[s] Primary exposure time	3.2	3.2
[deg] Pointing Roll	0.0	108.3972384900907			
[mm] SIM focus pos	-0.684267	-0.6828225247311905			
[mm] SIM defocus	0	0.8505141146731063			
[mm] SIM translation stage pos	-190.132523	250.466033080201			
[mm] SIM translation stage offset	0	-0.01005468664627074			
[s] Observation start time (MET)	228452486.027526	228452485.0025			
Observation start date	2005-03-29T03:01:26	2005-03-29T03:01:25			
[s] Observation end time (MET)	228471272.22838	228471271.20336			
Observation end date	2005-03-29T08:14:32	2005-03-29T08:14:31			
Read mode	TIMED	TIMED			

2.3 Star Slots

2.4 FID Slots

A Summary

A.1 Status

V&V Scientist	Jen Lauer
V&V Date (YYYY-MM-DD)	2013.01.04
V&V Edition	1
V&V Disposition and Status	OK
V&V Charge Time	7.7977857729197

A.2 Comments