

V&V Reference Report

L2 ASCDS Version : 7.6.7.1

Observation 59720 - L2 Version 002
Chandra X-Ray Center

L2 Processing Date : Mar 18 2006

Contents

1	Front	2
2	OBI	3
2.1	OBI	3
2.1.1	Images	3
2.1.2	Bias	3
2.1.3	Parameters	4
2.1.4	Events	4
2.2	Compared Parameters	5
2.3	Aspect	6
2.4	Star Slots	8
2.5	FID Slots	8
A	Summary	9
A.1	Status	9
A.2	Comments	9

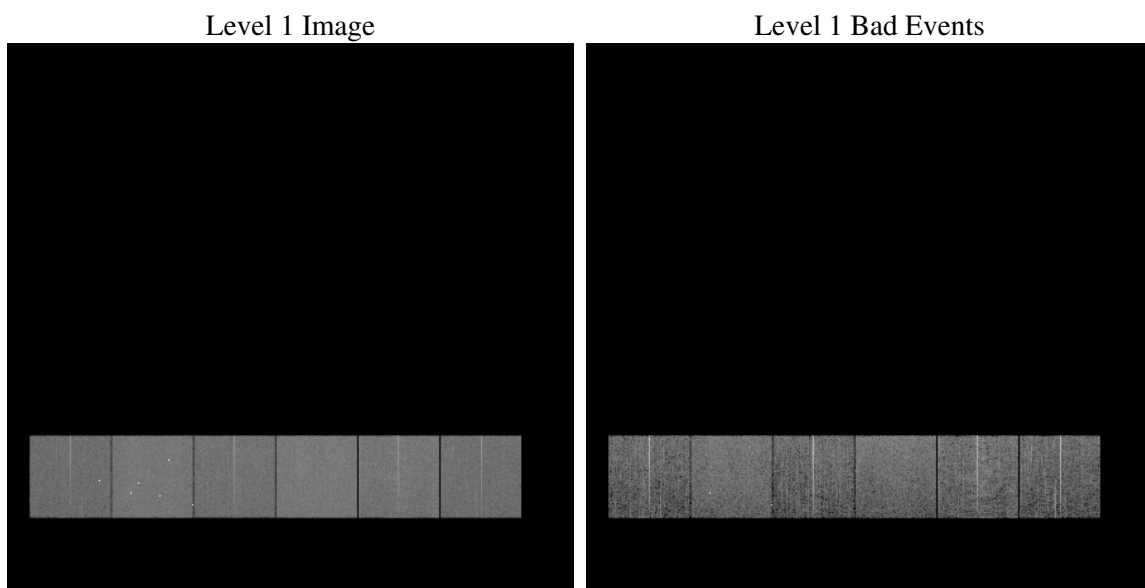
1 Front

seq_num	
obs_id	59720
title	ACIS-456789 diagnostics
observer	CHANDRA engineering request/realtime commanding
object	
dtcycle	0
cycle	P
ra_targ	0.0
dec_targ	0.0
ra_nom	210.97876075166
dec_nom	4.5181254726475
roll_nom	108.39723780375
revision	2
ontime	7796.8878917396
livetime	7698.1590025321
ontime4	6072.8068569303
ontime5	7796.9289317429
ontime6	6656.1435079575
ontime7	7796.8878917396
ontime8	6847.4436454177
ontime9	6455.0791109502
l2events	1008904

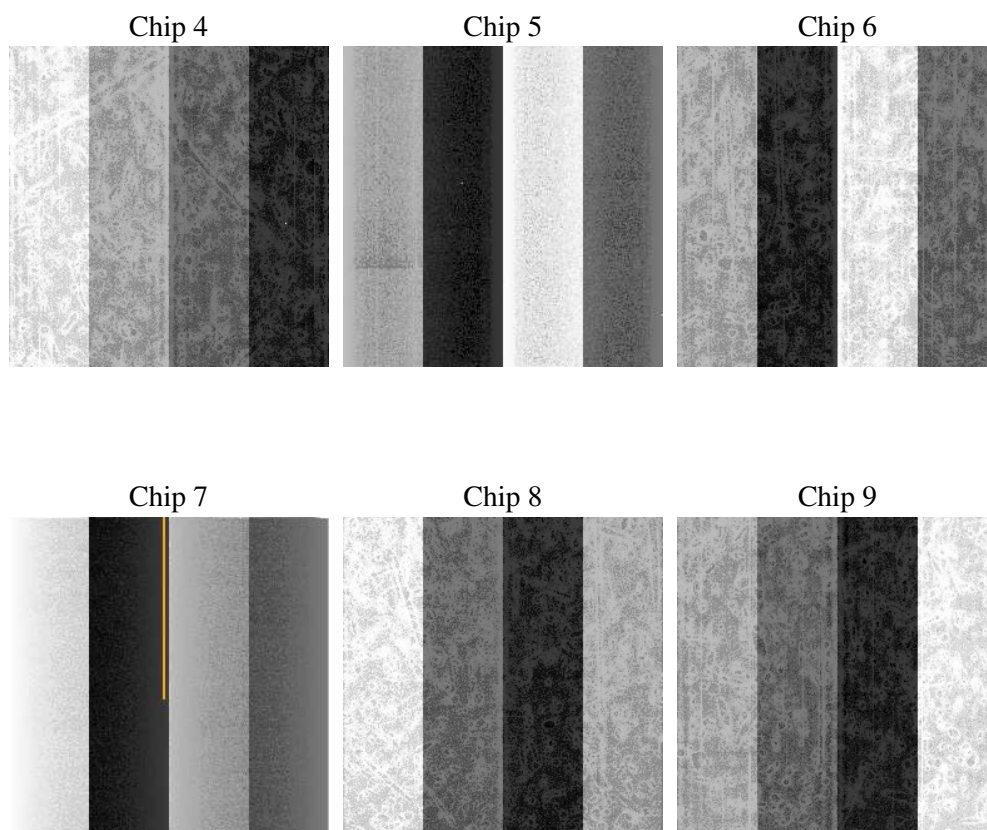
2 OBI

2.1 OBI

2.1.1 Images



2.1.2 Bias



2.1.3 Parameters

obi_num	0
ascdsver	7.6.7.1
caldsver	3.2.1
date	2006-03-18T07:10:32
revision	2

sched_exp_time	0.0
ontime	7797.8736937046
ontime4	6073.6695388854
ontime5	7797.8736937046
ontime6	6657.0472299159
ontime7	7797.8736937046
ontime8	6848.2652873993
ontime9	6456.1059529185
l1events	1406884

2.1.4 Events

	ccd 4	ccd 5	ccd 6	ccd 7	ccd 8	ccd 9
level 1 events	198009	261843	225035	267024	243648	211325
rejected events	48662	60987	50638	57696	57716	48644
rejected %	24%	23%	22%	21%	23%	23%

	ccd 4	ccd 5	ccd 6	ccd 7	ccd 8	ccd 9
grade 0 events	87287	28015	94553	34891	100092	89459
	44%	10%	42%	13%	41%	42%
grade 1 events	666	927	499	92	550	537
	0%	0%	0%	0%	0%	0%
grade 2 events	23382	90524	30246	63645	32978	27786
	11%	34%	13%	23%	13%	13%
grade 3 events	9898	6146	11042	14569	12150	10334
	4%	2%	4%	5%	4%	4%
grade 4 events	9825	6014	10762	14423	12365	10499
	4%	2%	4%	5%	5%	4%
grade 5 events	2803	6080	3147	6590	3901	3354
	1%	2%	1%	2%	1%	1%
grade 6 events	18955	70157	27794	81800	28347	24603
	9%	26%	12%	30%	11%	11%
grade 7 events	45193	53980	46992	51014	53265	44753
	22%	20%	20%	19%	21%	21%

2.2 Compared Parameters

Parameter	Planned	Actual	Parameter	Planned	Actual
Instrument	ACIS	ACIS	Obspar format version number	6	6
Detector	ACIS-456789	ACIS-456789	Obspar file type	PREDICTED	ACTUAL
Grating	NONE	NONE	Obspar update status	NONE	UPDATED
Data mode	FAINT	FAINT	On-chip summing requested	N	N
Observation mode	SECONDARY	SECONDARY	Subarray requested	NONE	NONE
Pointing RA	0	210.9787607516575	Alternating exposures requested	N	N
Pointing Dec	0	4.518125472647525	Primary exposure time	3.2	3.2
Pointing Roll	0.0	108.3972378037463			
SIM focus pos (mm)	-0.684267	-0.6828225247311905			
SIM defocus (mm)	0	0.8505141146731063			
SIM translation stage pos (mm)	-190.132523	250.466033080201			
SIM translation stage offset (mm)	0	-0.01005468664627074			
Observation start time	228452486.027526	228452485.0025			
Observation start date	2005-03-29T03:01:26	2005-03-29T03:01:25			
Observation end time	228471272.22838	228471271.20336			
Observation end date	2005-03-29T08:14:32	2005-03-29T08:14:31			
Read mode	TIMED	TIMED			

2.3 Aspect

2.4 Star Slots

2.5 FID Slots

A Summary

A.1 Status

V&V Scientist	Jen Lauer
V&V Date (YYYY-MM-DD)	2006.03.20
V&V Edition	1
V&V Disposition and Status	OK
V&V Charge Time	7.79688789

A.2 Comments