

V&V Reference Report

L2 ASCDS Version : 7.6.7.1

Observation 59709 - L2 Version 002
Chandra X-Ray Center

L2 Processing Date : Mar 18 2006

Contents

1	Front	2
2	OBI	3
2.1	OBI	3
2.1.1	Images	3
2.1.2	Bias	3
2.1.3	Parameters	4
2.1.4	Events	4
2.2	Compared Parameters	5
2.3	Aspect	6
2.4	Star Slots	8
2.5	FID Slots	8
A	Summary	9
A.1	Status	9
A.2	Comments	9

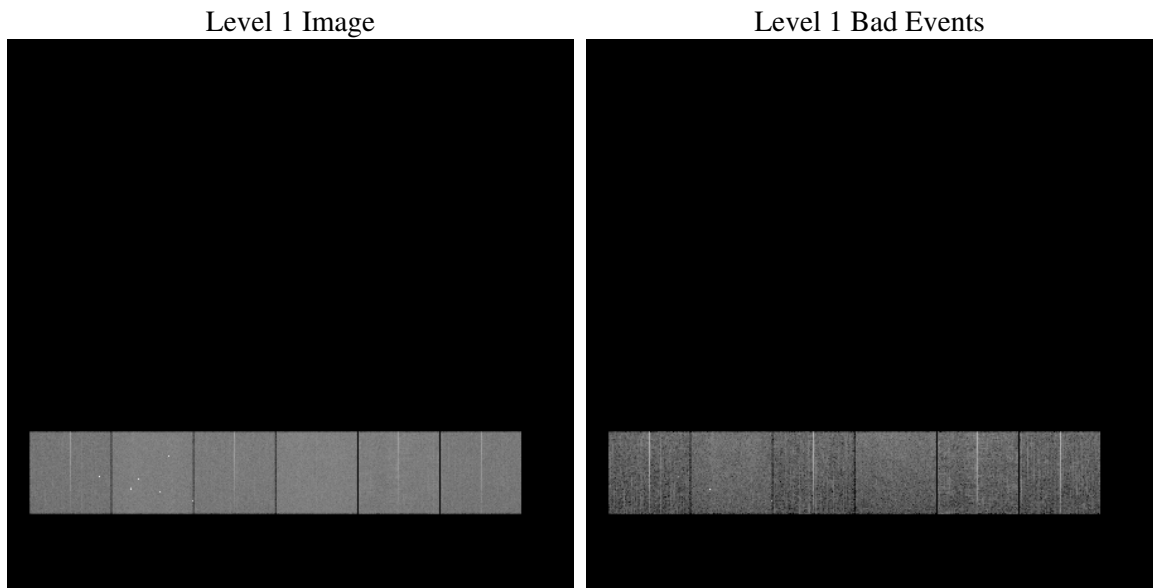
1 Front

seq_num	
obs_id	59709
title	ACIS-456789 diagnostics
observer	CHANDRA engineering request/realtime commanding
object	
dtcycle	0
cycle	P
ra_targ	0.0
dec_targ	0.0
ra_nom	183.79682099129
dec_nom	-0.92736158858866
roll_nom	242.86329765611
revision	2
ontime	8280.0997822285
livetime	8175.2521731084
ontime4	6650.0136263072
ontime5	8280.1408222318
ontime6	7346.7822757661
ontime7	8280.0997822285
ontime8	7437.6115537584
ontime9	7032.2843500376
l2events	1066326

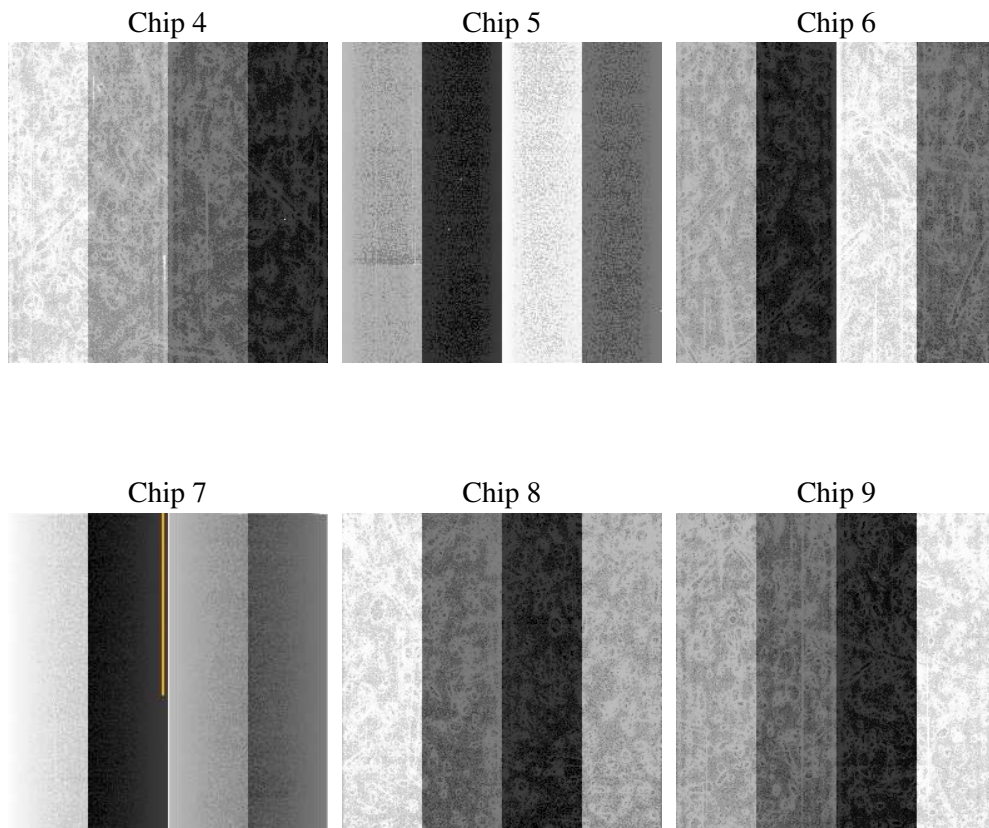
2 OBI

2.1 OBI

2.1.1 Images



2.1.2 Bias



2.1.3 Parameters

obi_num	0
ascdsver	7.6.7.1
caldsver	3.2.1
date	2006-03-18T07:45:54
revision	2

sched_exp_time	0.0
ontime	8280.7671460509
ontime4	6650.5578701198
ontime5	8280.7671460509
ontime6	7347.367559582
ontime7	8280.7671460509
ontime8	7438.1147575974
ontime9	7032.9927538633
l1events	1491287

2.1.4 Events

	ccd 4	ccd 5	ccd 6	ccd 7	ccd 8	ccd 9
level 1 events	212548	270424	242636	278271	259589	227819
rejected events	53409	65872	54842	61015	62460	54243
rejected %	25%	24%	22%	21%	24%	23%

	ccd 4	ccd 5	ccd 6	ccd 7	ccd 8	ccd 9
grade 0 events	93581	24254	101823	35551	106228	95654
	44%	8%	41%	12%	40%	41%
grade 1 events	703	197	492	115	548	556
	0%	0%	0%	0%	0%	0%
grade 2 events	24200	93705	32709	66519	34853	29193
	11%	34%	13%	23%	13%	12%
grade 3 events	10673	5997	11557	15099	12948	11257
	5%	2%	4%	5%	4%	4%
grade 4 events	10550	5606	11373	14716	12788	11191
	4%	2%	4%	5%	4%	4%
grade 5 events	3106	6592	3456	7009	4241	3601
	1%	2%	1%	2%	1%	1%
grade 6 events	20135	74990	30332	85371	30312	26281
	9%	27%	12%	30%	11%	11%
grade 7 events	49600	59083	50894	53891	57671	50086
	23%	21%	20%	19%	22%	21%

2.2 Compared Parameters

Parameter	Planned	Actual	Parameter	Planned	Actual
Instrument	ACIS	ACIS	Obspar format version number	6	6
Detector	ACIS-456789	ACIS-456789	Obspar file type	PREDICTED	ACTUAL
Grating	NONE	NONE	Obspar update status	NONE	UPDATED
Data mode	FAINT	FAINT	On-chip summing requested	N	N
Observation mode	SECONDARY	SECONDARY	Subarray requested	NONE	NONE
Pointing RA	0	183.7968209912883	Alternating exposures requested	N	N
Pointing Dec	0	-0.9273615885886605	Primary exposure time	3.2	3.2
Pointing Roll	0.0	242.8632976561076			
SIM focus pos (mm)	-0.684267	-0.6828225247311905			
SIM defocus (mm)	0	0.8505141146731063			
SIM translation stage pos (mm)	-190.132523	250.466033080201			
SIM translation stage offset (mm)	0	-0.01005468664627074			
Observation start time	228947476.999964	228947475.97497			
Observation start date	2005-04-03T20:31:17	2005-04-03T20:31:15			
Observation end time	228970822.401023	228970821.37604			
Observation end date	2005-04-04T03:00:22	2005-04-04T03:00:21			
Read mode	TIMED	TIMED			

2.3 Aspect

2.4 Star Slots

2.5 FID Slots

A Summary

A.1 Status

V&V Scientist	Jen Lauer
V&V Date (YYYY-MM-DD)	2006.03.20
V&V Edition	1
V&V Disposition and Status	OK
V&V Charge Time	8.28009978

A.2 Comments

The ACIS focal plane temperature was above calibration limits for the entire observation.