

V&V Reference Report

L2 ASCDS Version : 7.6.7

Observation 59699 - L2 Version 002
Chandra X-Ray Center

L2 Processing Date: Feb 28 2006

Contents

1	Front	2
2	OBI	3
2.1	OBI	3
2.1.1	Images	3
2.1.2	Bias	3
2.1.3	Parameters	4
2.1.4	Events	4
2.2	Compared Parameters	5
2.3	Aspect	6
2.4	Star Slots	8
2.5	FID Slots	8
A	Summary	9
A.1	Status	9
A.2	Comments	9

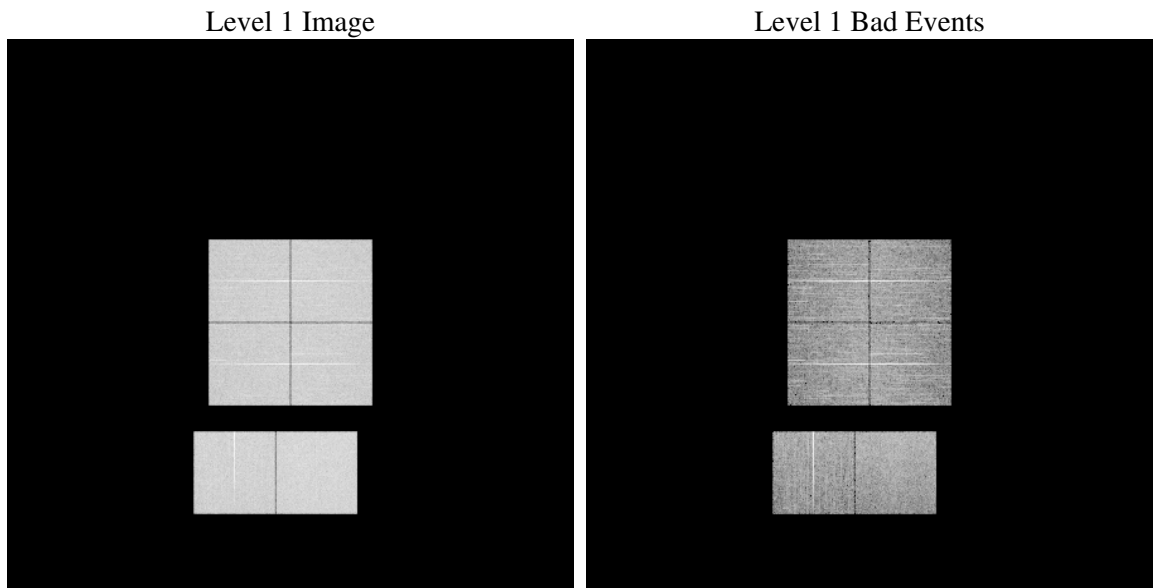
1 Front

seq_num	
obs_id	59699
title	ACIS-012367 diagnostics
observer	CHANDRA engineering request/realtime commanding
object	
dtcycle	0
cycle	P
ra_targ	0.0
dec_targ	0.0
ra_nom	185.99264864445
dec_nom	8.4712655472287
roll_nom	223.21453609277
revision	2
ontime	8275.1999691725
livetime	8170.4144044356
ontime0	7494.1243284047
ontime1	7685.3420554996
ontime2	7296.4247401059
ontime3	7468.1971330941
ontime6	7957.5841203034
ontime7	8275.1999691725
l2events	1088443

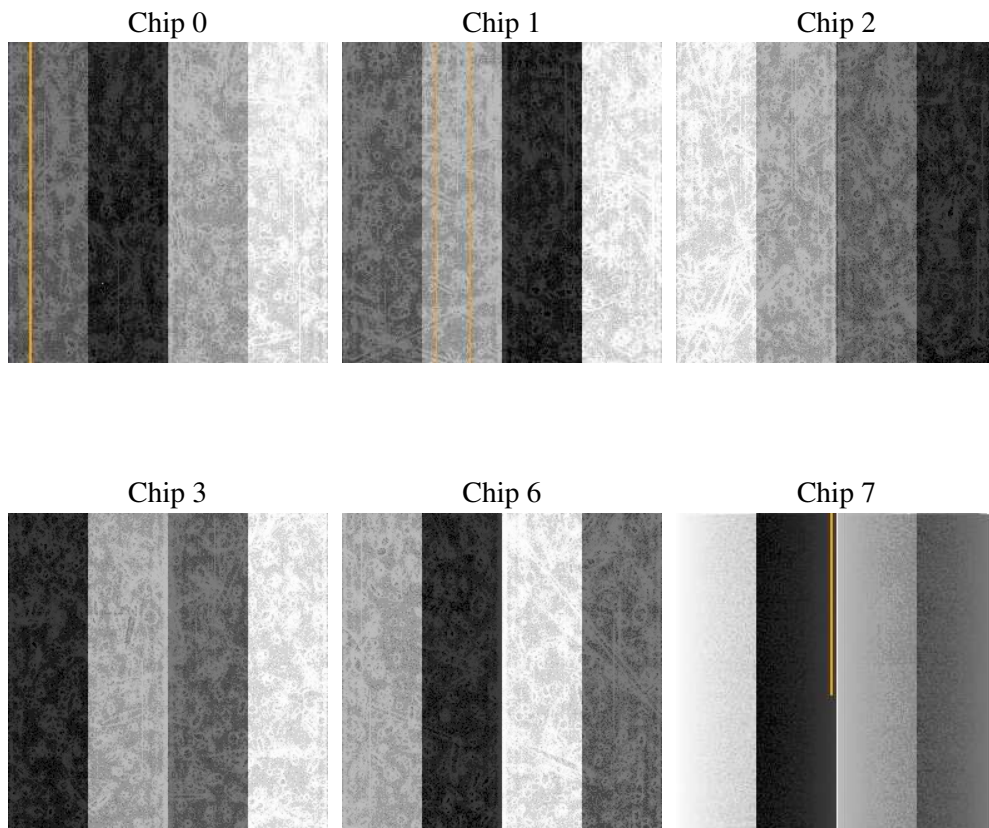
2 OBI

2.1 OBI

2.1.1 Images



2.1.2 Bias



2.1.3 Parameters

obi_num	0
ascdsver	7.6.7
caldbver	3.2.1
date	2006-03-01T02:27:06
revision	2

sched_exp_time	0.0
ontime	8277.5335359573
ontime0	7496.4578951895
ontime1	7687.6756222844
ontime2	7298.7583068907
ontime3	7470.5306998789
ontime6	7959.9176870883
ontime7	8277.5335359573
l1events	1489984

2.1.4 Events

	ccd 0	ccd 1	ccd 2	ccd 3	ccd 6	ccd 7
level 1 events	236748	242660	233376	240601	257850	278749
rejected events	55134	55484	55216	57387	58135	64046
rejected %	23%	22%	23%	23%	22%	22%

	ccd 0	ccd 1	ccd 2	ccd 3	ccd 6	ccd 7
grade 0 events	100131	101702	100269	103483	107111	32461
	42%	41%	42%	43%	41%	11%
grade 1 events	562	509	613	643	480	107
	0%	0%	0%	0%	0%	0%
grade 2 events	31487	34289	29381	30437	35498	67973
	13%	14%	12%	12%	13%	24%
grade 3 events	11778	11668	11571	11883	12369	14051
	4%	4%	4%	4%	4%	5%
grade 4 events	11688	11689	11644	11850	11971	13797
	4%	4%	4%	4%	4%	4%
grade 5 events	3355	3373	2977	3453	3675	6823
	1%	1%	1%	1%	1%	2%
grade 6 events	26617	27905	25295	25642	32766	86514
	11%	11%	10%	10%	12%	31%
grade 7 events	51130	51525	51626	53210	53980	57023
	21%	21%	22%	22%	20%	20%

2.2 Compared Parameters

Parameter	Planned	Actual	Parameter	Planned	Actual
Instrument	ACIS	ACIS	Obspar format version number	6	6
Detector	ACIS-012367	ACIS-012367	Obspar file type	PREDICTED	ACTUAL
Grating	NONE	NONE	Obspar update status	NONE	UPDATED
Data mode	FAINT	FAINT	On-chip summing requested	N	N
Observation mode	SECONDARY	SECONDARY	Subarray requested	NONE	NONE
Pointing RA	0	185.9926486444496	Alternating exposures requested	N	N
Pointing Dec	0	8.471265547228663	Primary exposure time	3.2	3.2
Pointing Roll	0.0	223.2145360927666			
SIM focus pos (mm)	-0.782348	-0.6828225247311905			
SIM defocus (mm)	0	0.8505141146731063			
SIM translation stage pos (mm)	-233.592463	250.4635187648994			
SIM translation stage offset (mm)	0	-0.007540371344731511			
Observation start time	229866200.941755	229866199.91673			
Observation start date	2005-04-14T11:43:21	2005-04-14T11:43:19			
Observation end time	229888652.542777	229888651.51775			
Observation end date	2005-04-14T17:57:33	2005-04-14T17:57:31			
Read mode	TIMED	TIMED			

2.3 Aspect

2.4 Star Slots

2.5 FID Slots

A Summary

A.1 Status

V&V Scientist	Beth Sundheim
V&V Date (YYYY-MM-DD)	2006.03.01
V&V Edition	1
V&V Disposition and Status	OK
V&V Charge Time	8.27519996

A.2 Comments

Focal plane temperature is elevated during entire observation.
Calibration is likely to be affected.