

V&V Reference Report

L2 ASCDS Version : 8.5.1.1

Observation 59687 - L2 Version 3
Chandra X-Ray Center

L2 Processing Date : Dec 22 2012

Contents

1	Front	2
2	OBI	3
2.1	OBI	3
2.1.1	Images	3
2.1.2	Bias	3
2.1.3	Parameters	4
2.1.4	Events	4
2.2	Compared Parameters	5
2.3	Star Slots	6
2.4	FID Slots	6
A	Summary	7
A.1	Status	7
A.2	Comments	7

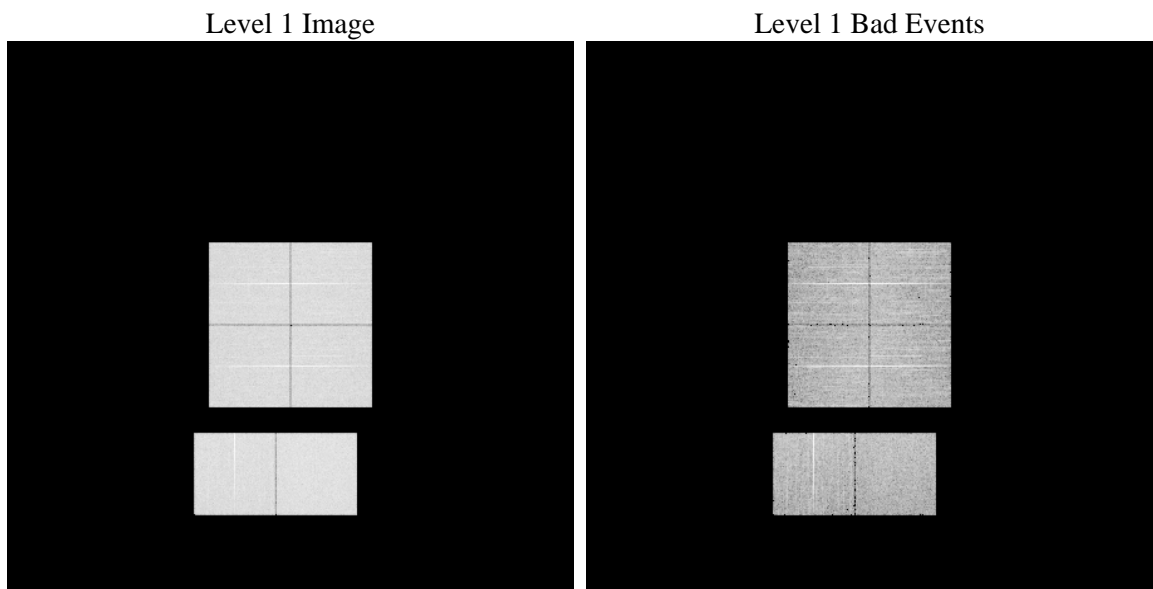
1 Front

seq_num	 	Sequence number
obs_id	59687	Observation id
title	ACIS-012367 diagnostics	Proposal title
observer	CHANDRA engineering request/realtime commanding	Principal investig
object	 	Source name
dtcycle	0	
cycle	P	events from which exps? Prim/Second/Both
ra_targ	0.0	Observer's specified target RA [deg]
dec_targ	0.0	Observer's specified target Dec [deg]
ra_nom	185.01340732025	Nominal RA [deg]
dec_nom	-11.025396283083	Nominal Dec [deg]
roll_nom	264.5568938002	Nominal Roll [deg]
revision	3	Processing version of data
ontime	7230.5521345139	Sum of GTIs [s]
livetime	7138.9945296708	Livetime [s]
ontime0	6605.0027175248	Sum of GTIs [s]
ontime1	6799.4202251434	Sum of GTIs [s]
ontime2	6420.1847704053	Sum of GTIs [s]
ontime3	6491.6508159339	Sum of GTIs [s]
ontime6	6971.1099103987	Sum of GTIs [s]
ontime7	7230.5521345139	Sum of GTIs [s]
l2events	958768	Number of level 2 events

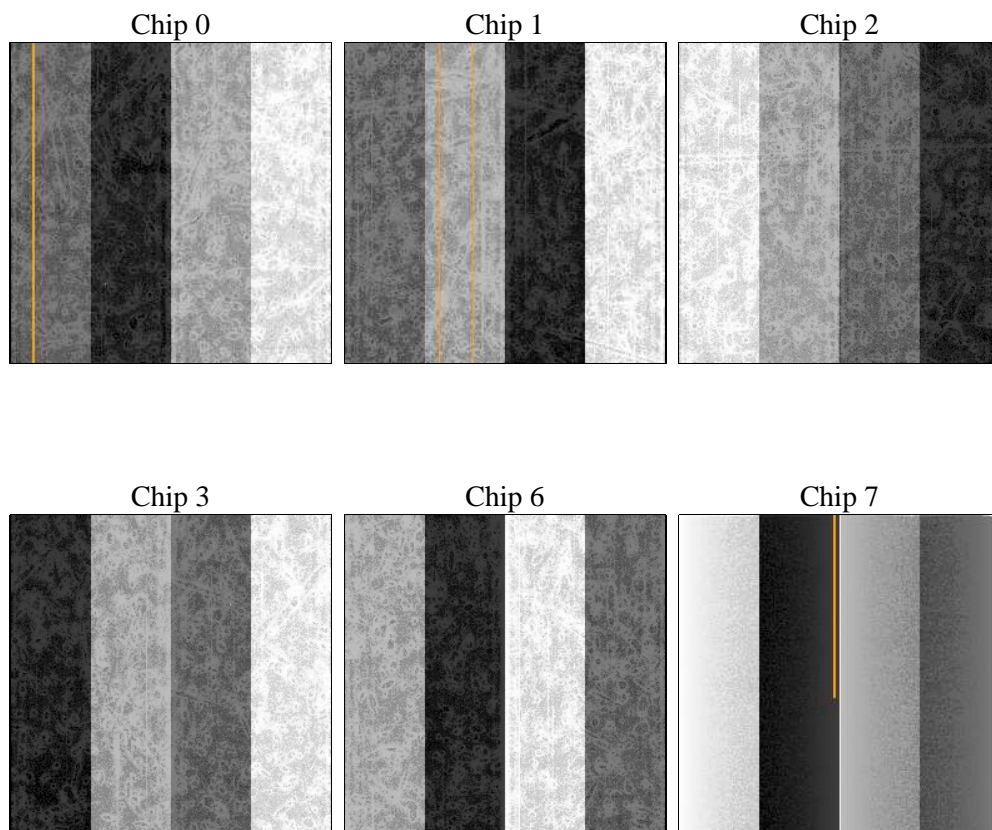
2 OBI

2.1 OBI

2.1.1 Images



2.1.2 Bias



2.1.3 Parameters

obi_num	1	Obi number	sched_exp_time	0.0	[s] Scheduled observation exposure time
ascdsver	8.5.1.1	Processing system revision	ontime	7230.5521345139	Sum of GTIs [s]
caldsver	4.5.5	 	ontime0	6605.0027175248	Sum of GTIs [s]
date	2012-12-22T16:43:07	Date and time of file creation	ontime1	6799.4202251434	Sum of GTIs [s]
revision	3	Processing version of data	ontime2	6420.1847704053	Sum of GTIs [s]
			ontime3	6491.6508159339	Sum of GTIs [s]
			ontime6	6971.1099103987	Sum of GTIs [s]
			ontime7	7230.5521345139	Sum of GTIs [s]
			l1events	1320085	Number of level 1 events

2.1.4 Events

	ccd 0	ccd 1	ccd 2	ccd 3	ccd 6	ccd 7		ccd 0	ccd 1	ccd 2	ccd 3	ccd 6	ccd 7
level 1 events	208539	217065	206785	212228	229139	246329	grade 0 events	88504	90424	89060	90277	95319	45777
rejected events	49773	52924	51187	53876	54910	49487		42%	41%	43%	42%	41%	18%
rejected %	23%	24%	24%	25%	23%	20%	grade 1 events	529	464	595	585	461	151
								0%	0%	0%	0%	0%	0%
							grade 2 events	27670	30206	25518	26582	31018	44188
								13%	13%	12%	12%	13%	17%
							grade 3 events	10434	10488	10192	10496	10721	19451
								5%	4%	4%	4%	4%	7%
							grade 4 events	10512	10486	10271	10544	10691	19097
								5%	4%	4%	4%	4%	7%
							grade 5 events	2956	3085	2678	3175	3195	8016
								1%	1%	1%	1%	1%	3%
							grade 6 events	23674	24648	22377	22306	28575	70768
								11%	11%	10%	10%	12%	28%
							grade 7 events	44260	47264	46094	48263	49159	38881
								21%	21%	22%	22%	21%	15%

2.2 Compared Parameters

Parameter	Planned	Actual
Instrument	ACIS	ACIS
Detector	ACIS-012367	ACIS-012367
Grating	NONE	NONE
Data mode	FAINT	FAINT
Observation mode	SECONDARY	SECONDARY
[deg] Pointing RA	0	185.0134073202458
[deg] Pointing Dec	0	-11.02539628308326
[deg] Pointing Roll	0.0	264.5568938002005
[mm] SIM focus pos	-0.782348	-0.6828225247311905
[mm] SIM defocus	0	0.8505141146731063
[mm] SIM translation stage pos	-233.592463	250.4635187648994
[mm] SIM translation stage offset	0	-0.007540371344731511
[s] Observation start time (MET)	230553022.722923	230553021.69795
Observation start date	2005-04-22T10:30:23	2005-04-22T10:30:21
[s] Observation end time (MET)	230573373.073847	230573372.04887
Observation end date	2005-04-22T16:09:33	2005-04-22T16:09:32
Read mode	TIMED	TIMED

Parameter	Planned	Actual
Obspar format version number	7	7
Obspar file type	PREDICTED	ACTUAL
Obspar update status	NONE	UPDATED
On-chip summing requested	N	N
Subarray requested	NONE	NONE
Alternating exposures requested	N	N
[s] Primary exposure time	3.2	3.2

2.3 Star Slots

2.4 FID Slots

A Summary

A.1 Status

V&V Scientist	Beth Sundheim
V&V Date (YYYY-MM-DD)	2013.01.15
V&V Edition	1
V&V Disposition and Status	OK
V&V Charge Time	7.2305521345139

A.2 Comments