

# V&V Reference Report

## L2 ASCDS Version : 7.6.7

Observation 59680 - L2 Version 002  
Chandra X-Ray Center

L2 Processing Date: Mar 2 2006

## Contents

<b>1</b>	<b>Front</b>	<b>2</b>
<b>2</b>	<b>OBI</b>	<b>3</b>
2.1	OBI . . . . .	3
2.1.1	Images . . . . .	3
2.1.2	Bias . . . . .	3
2.1.3	Parameters . . . . .	4
2.1.4	Events . . . . .	4
2.2	Compared Parameters . . . . .	5
2.3	Aspect . . . . .	6
2.4	Star Slots . . . . .	8
2.5	FID Slots . . . . .	8
<b>A</b>	<b>Summary</b>	<b>9</b>
A.1	Status . . . . .	9
A.2	Comments . . . . .	9

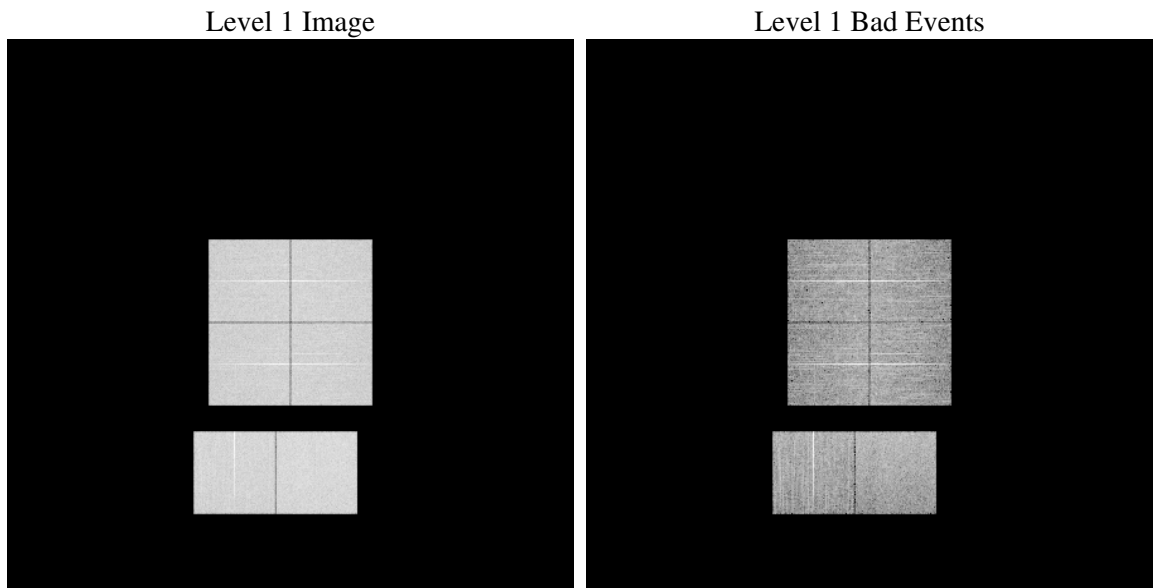
# 1 Front

seq_num	&#160
obs_id	59680
title	ACIS-012367 diagnostics
observer	CHANDRA engineering request/realtime commanding
object	&#160
dtcycle	0
cycle	P
ra_targ	0.0
dec_targ	0.0
ra_nom	207.035556627
dec_nom	-38.992678531648
roll_nom	341.9631655949
revision	2
ontime	8214.399969399
livetime	8110.3842908686
ontime0	7598.6143239141
ontime1	7708.8075137734
ontime2	7358.7823503315
ontime3	7323.1309901178
ontime6	7776.8678607345
ontime7	8214.399969399
l2events	1085028

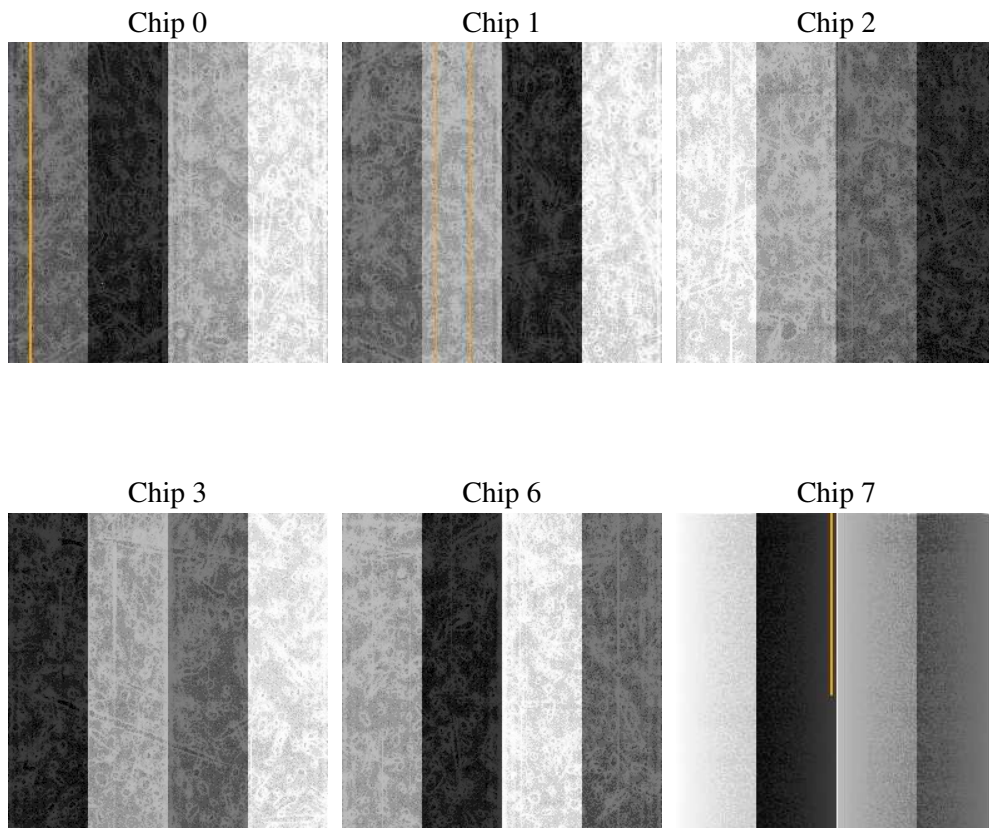
## 2 OBI

### 2.1 OBI

#### 2.1.1 Images



#### 2.1.2 Bias



### 2.1.3 Parameters

obi_num	0
ascdsver	7.6.7
caldbver	3.2.1
date	2006-03-02T15:49:37
revision	2

sched_exp_time	0.0
ontime	8280.7739866972
ontime0	7648.7833999395
ontime1	7762.2175701261
ontime2	7415.4334466755
ontime3	7376.5410265326
ontime6	7836.7599174678
ontime7	8280.7739866972
l1events	1489755

### 2.1.4 Events

	ccd 0	ccd 1	ccd 2	ccd 3	ccd 6	ccd 7
level 1 events	238581	241645	235084	237039	259360	278046
rejected events	55379	54342	55032	57335	62164	64155
rejected %	23%	22%	23%	24%	23%	23%

	ccd 0	ccd 1	ccd 2	ccd 3	ccd 6	ccd 7
grade 0 events	100889	102795	101059	101257	107430	34665
	42%	42%	42%	42%	41%	12%
grade 1 events	632	532	640	661	564	98
	0%	0%	0%	0%	0%	0%
grade 2 events	32419	33924	30608	30821	34392	65912
	13%	14%	13%	13%	13%	23%
grade 3 events	11904	11936	12072	11825	12483	14815
	4%	4%	5%	4%	4%	5%
grade 4 events	12027	11939	12033	11987	12598	14558
	5%	4%	5%	5%	4%	5%
grade 5 events	3400	3460	3115	3604	3798	6970
	1%	1%	1%	1%	1%	2%
grade 6 events	27248	28027	25752	25220	31838	85703
	11%	11%	10%	10%	12%	30%
grade 7 events	50062	49032	49805	51664	56257	55325
	20%	20%	21%	21%	21%	19%

## 2.2 Compared Parameters

Parameter	Planned	Actual	Parameter	Planned	Actual
Instrument	ACIS	ACIS	Obspar format version number	6	6
Detector	ACIS-012367	ACIS-012367	Obspar file type	PREDICTED	ACTUAL
Grating	NONE	NONE	Obspar update status	NONE	UPDATED
Data mode	FAINT	FAINT	On-chip summing requested	N	N
Observation mode	SECONDARY	SECONDARY	Subarray requested	NONE	NONE
Pointing RA	0	207.0355566270017	Alternating exposures requested	N	N
Pointing Dec	0	-38.99267853164761	Primary exposure time	3.2	3.2
Pointing Roll	0.0	341.9631655949049			
SIM focus pos (mm)	-0.782348	-0.6828225247311905			
SIM defocus (mm)	0	0.8505141146731063			
SIM translation stage pos (mm)	-233.592463	250.4635187648994			
SIM translation stage offset (mm)	0	-0.007540371344731511			
Observation start time	231004574.193489	231004573.16849			
Observation start date	2005-04-27T15:56:14	2005-04-27T15:56:13			
Observation end time	231028147.144561	231028146.11956			
Observation end date	2005-04-27T22:29:07	2005-04-27T22:29:06			
Read mode	TIMED	TIMED			

## 2.3 Aspect



## **2.4 Star Slots**

## **2.5 FID Slots**



## A Summary

### A.1 Status

V&V Scientist	Beth Sundheim
V&V Date (YYYY-MM-DD)	2006.03.02
V&V Edition	1
V&V Disposition and Status	OK
V&V Charge Time	8.21439996

### A.2 Comments