

V&V Reference Report

L2 ASCDS Version : 7.6.7

Observation 59672 - L2 Version 002
Chandra X-Ray Center

L2 Processing Date: Mar 2 2006

Contents

1	Front	2
2	OBI	3
2.1	OBI	3
2.1.1	Images	3
2.1.2	Bias	3
2.1.3	Parameters	4
2.1.4	Events	4
2.2	Compared Parameters	5
2.3	Aspect	6
2.4	Star Slots	8
2.5	FID Slots	8
A	Summary	9
A.1	Status	9
A.2	Comments	9

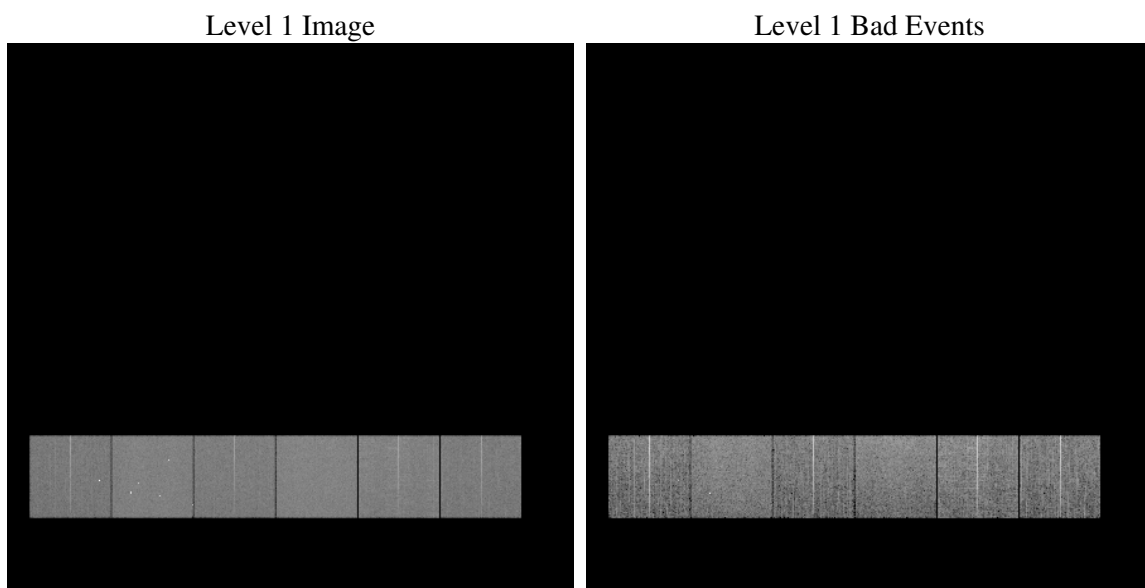
1 Front

seq_num	
obs_id	59672
title	ACIS-456789 diagnostics
observer	CHANDRA engineering request/realtime commanding
object	
dtcycle	0
cycle	P
ra_targ	0.0
dec_targ	0.0
ra_nom	219.03405669273
dec_nom	-41.98319283359
roll_nom	357.64642504982
revision	2
ontime	8277.7305786014
livetime	8172.9129697642
ontime4	6757.8348720968
ontime5	8277.7716186047
ontime6	7260.1456769705
ontime7	8277.7305786014
ontime8	7545.4338922799
ontime9	7081.7691089809
l2events	1063106

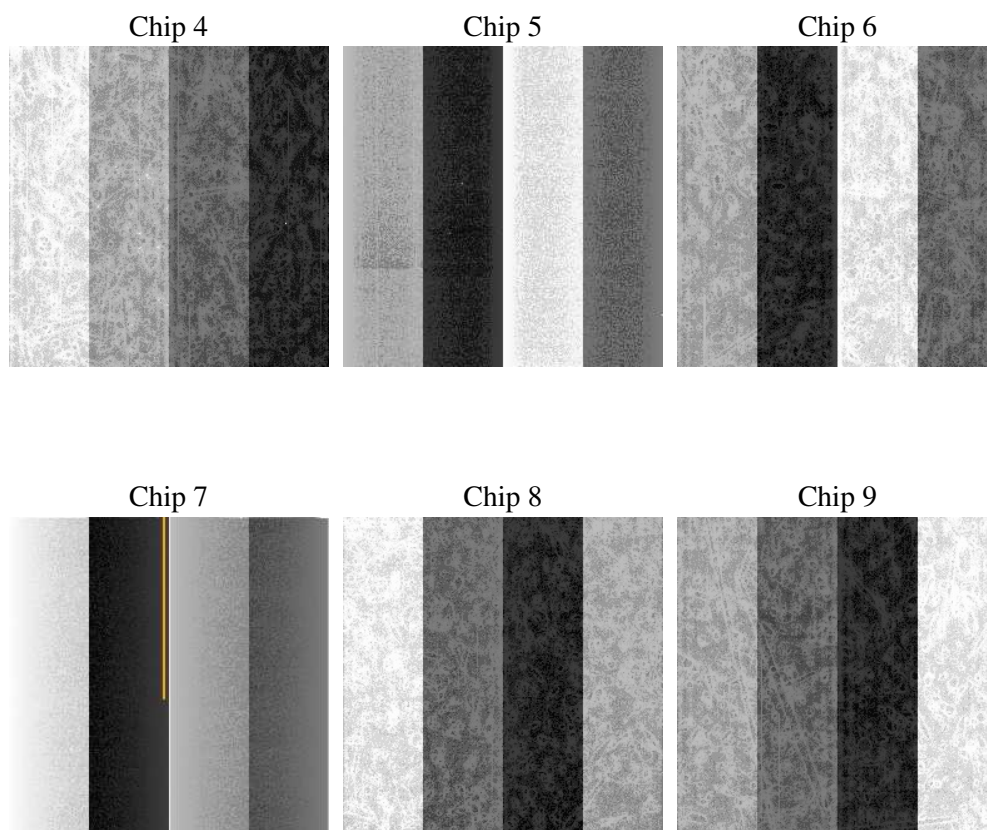
2 OBI

2.1 OBI

2.1.1 Images



2.1.2 Bias



2.1.3 Parameters

obi_num	0
ascdsver	7.6.7
caldbver	3.2.1
date	2006-03-02T16:50:01
revision	2

sched_exp_time	0.0
ontime	8280.7744769156
ontime4	6760.7556504011
ontime5	8280.7744769156
ontime6	7263.1074952781
ontime7	8280.7744769156
ontime8	7548.3136306107
ontime9	7084.8540472984
l1events	1491060

2.1.4 Events

	ccd 4	ccd 5	ccd 6	ccd 7	ccd 8	ccd 9
level 1 events	216212	264644	237895	278496	264642	229171
rejected events	54568	64401	53858	62005	65054	55820
rejected %	25%	24%	22%	22%	24%	24%

	ccd 4	ccd 5	ccd 6	ccd 7	ccd 8	ccd 9
grade 0 events	94192	23178	99993	35737	107221	95097
	43%	8%	42%	12%	40%	41%
grade 1 events	783	111	549	100	620	577
	0%	0%	0%	0%	0%	0%
grade 2 events	25515	92262	31810	65985	35426	29672
	11%	34%	13%	23%	13%	12%
grade 3 events	10548	6150	11349	15086	13318	11175
	4%	2%	4%	5%	5%	4%
grade 4 events	10950	6166	11616	15064	13107	11197
	5%	2%	4%	5%	4%	4%
grade 5 events	3150	6252	3429	7088	4295	3572
	1%	2%	1%	2%	1%	1%
grade 6 events	20537	72568	29357	84708	30596	26263
	9%	27%	12%	30%	11%	11%
grade 7 events	50537	57957	49792	54728	60059	51618
	23%	21%	20%	19%	22%	22%

2.2 Compared Parameters

Parameter	Planned	Actual	Parameter	Planned	Actual
Instrument	ACIS	ACIS	Obspar format version number	6	6
Detector	ACIS-456789	ACIS-456789	Obspar file type	PREDICTED	ACTUAL
Grating	NONE	NONE	Obspar update status	NONE	UPDATED
Data mode	FAINT	FAINT	On-chip summing requested	N	N
Observation mode	SECONDARY	SECONDARY	Subarray requested	NONE	NONE
Pointing RA	0	219.0340566927305	Alternating exposures requested	N	N
Pointing Dec	0	-41.98319283359027	Primary exposure time	3.2	3.2
Pointing Roll	0.0	357.6464250498161			
SIM focus pos (mm)	-0.684267	-0.6828225247311905			
SIM defocus (mm)	0	0.8505141146731063			
SIM translation stage pos (mm)	-190.132523	250.466033080201			
SIM translation stage offset (mm)	0	-0.01005468664627074			
Observation start time	231461666.814304	231461665.7893			
Observation start date	2005-05-02T22:54:27	2005-05-02T22:54:25			
Observation end time	231485254.115379	231485253.09037			
Observation end date	2005-05-03T05:27:34	2005-05-03T05:27:33			
Read mode	TIMED	TIMED			

2.3 Aspect

2.4 Star Slots

2.5 FID Slots

A Summary

A.1 Status

V&V Scientist	Beth Sundheim
V&V Date (YYYY-MM-DD)	2006.03.02
V&V Edition	1
V&V Disposition and Status	OK
V&V Charge Time	8.27773057

A.2 Comments