

V&V Reference Report

L2 ASCDS Version : 7.6.7

Observation 59663 - L2 Version 002
Chandra X-Ray Center

L2 Processing Date: Mar 3 2006

Contents

1	Front	2
2	OBI	3
2.1	OBI	3
2.1.1	Images	3
2.1.2	Bias	3
2.1.3	Parameters	4
2.1.4	Events	4
2.2	Compared Parameters	5
2.3	Aspect	6
2.4	Star Slots	8
2.5	FID Slots	8
A	Summary	9
A.1	Status	9
A.2	Comments	9

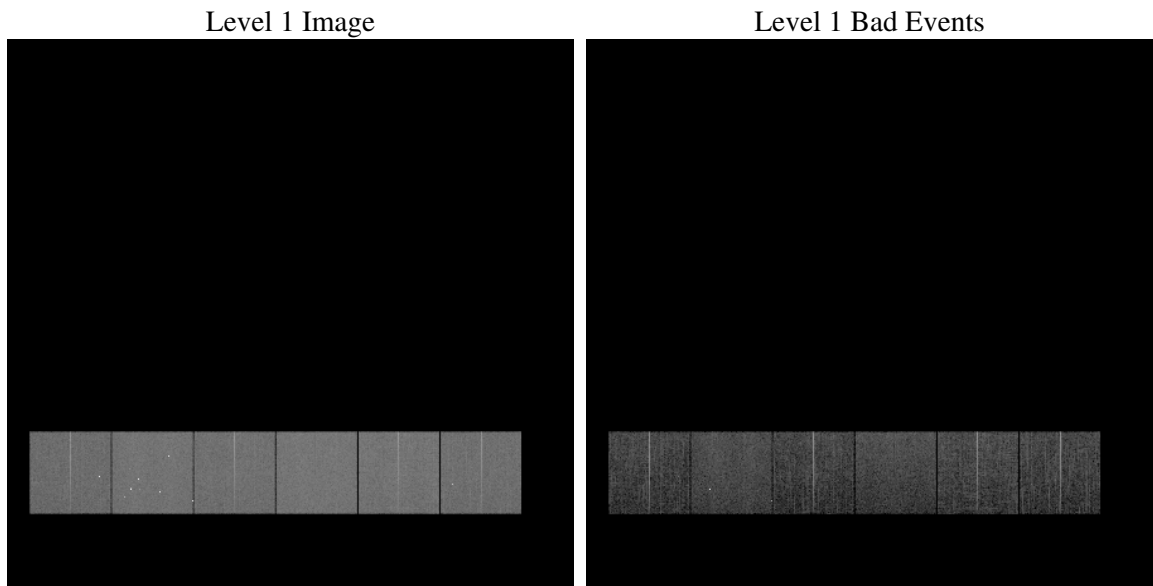
1 Front

seq_num	
obs_id	59663
title	ACIS-456789 diagnostics
observer	CHANDRA engineering request/realtime commanding
object	
dtcycle	0
cycle	P
ra_targ	0.0
dec_targ	0.0
ra_nom	211.99271421569
dec_nom	2.5714489535453
roll_nom	216.84273017669
revision	2
ontime	8275.0187465549
livetime	8170.2354765679
ontime4	6871.7991782427
ontime5	8275.0597865582
ontime6	7448.6518808305
ontime7	8275.0187465549
ontime8	7756.6267391145
ontime9	7263.7930344045
l2events	1067077

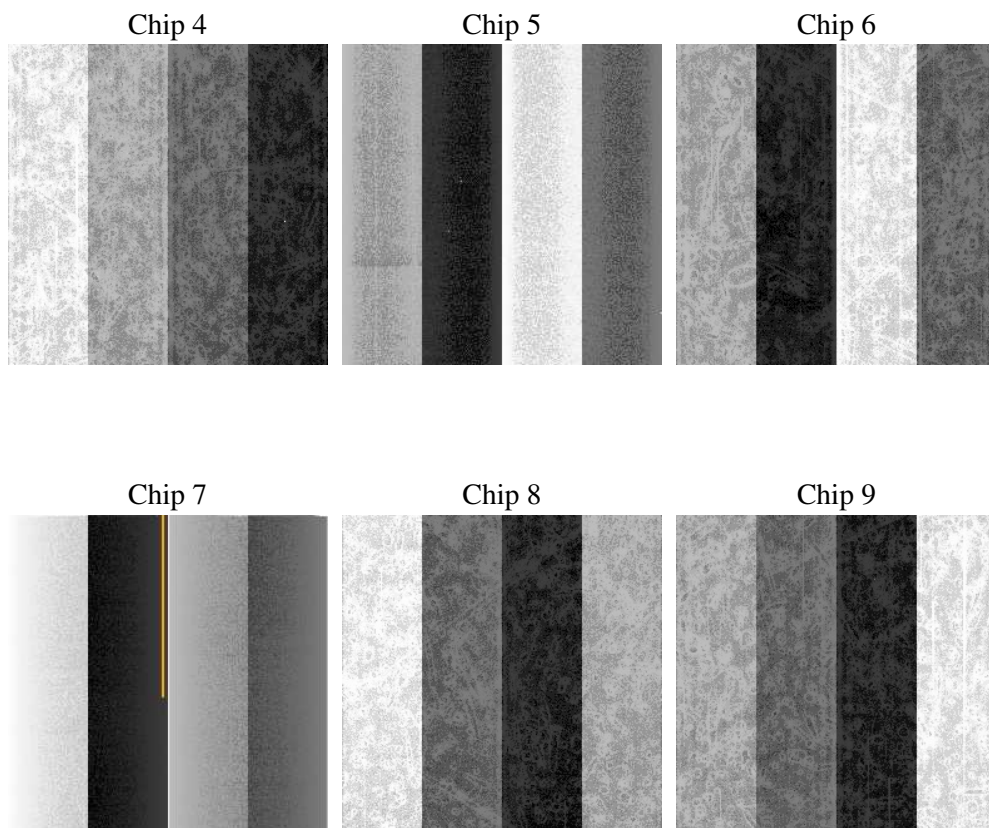
2 OBI

2.1 OBI

2.1.1 Images



2.1.2 Bias



2.1.3 Parameters

obi_num	1
ascdsver	7.6.7
caldsver	3.2.1
date	2006-03-03T15:35:44
revision	2

sched_exp_time	0.0
ontime	8277.5325365961
ontime4	6874.189848274
ontime5	8277.5325365961
ontime6	7451.0835908651
ontime7	8277.5325365961
ontime8	7758.9763691723
ontime9	7266.347864449
l1events	1489765

2.1.4 Events

	ccd 4	ccd 5	ccd 6	ccd 7	ccd 8	ccd 9
level 1 events	216052	267511	240168	270425	263345	232264
rejected events	53281	65289	52402	58584	60198	54293
rejected %	24%	24%	21%	21%	22%	23%

	ccd 4	ccd 5	ccd 6	ccd 7	ccd 8	ccd 9
grade 0 events	96150	25382	101426	33936	110226	98382
	44%	9%	42%	12%	41%	42%
grade 1 events	734	113	473	86	532	546
	0%	0%	0%	0%	0%	0%
grade 2 events	24294	91031	33293	66147	35762	29900
	11%	34%	13%	24%	13%	12%
grade 3 events	10859	5536	11294	14299	13112	11312
	5%	2%	4%	5%	4%	4%
grade 4 events	10745	5139	11346	14058	12901	11435
	4%	1%	4%	5%	4%	4%
grade 5 events	2868	6646	3310	6520	4061	3531
	1%	2%	1%	2%	1%	1%
grade 6 events	20798	75201	30513	83483	31234	27016
	9%	28%	12%	30%	11%	11%
grade 7 events	49604	58463	48513	51896	55517	50142
	22%	21%	20%	19%	21%	21%

2.2 Compared Parameters

Parameter	Planned	Actual	Parameter	Planned	Actual
Instrument	ACIS	ACIS	Obspar format version number	6	6
Detector	ACIS-456789	ACIS-456789	Obspar file type	PREDICTED	ACTUAL
Grating	NONE	NONE	Obspar update status	NONE	UPDATED
Data mode	FAINT	FAINT	On-chip summing requested	N	N
Observation mode	SECONDARY	SECONDARY	Subarray requested	NONE	NONE
Pointing RA	0	211.9927142156881	Alternating exposures requested	N	N
Pointing Dec	0	2.57144895354532	Primary exposure time	3.2	3.2
Pointing Roll	0.0	216.8427301766861			
SIM focus pos (mm)	-0.684267	-0.6828225247311905			
SIM defocus (mm)	0	0.8505141146731063			
SIM translation stage pos (mm)	-190.132523	250.4635187648994			
SIM translation stage offset (mm)	0	-0.007540371344731511			
Observation start time	232151465.195719	232151464.1707			
Observation start date	2005-05-10T22:31:05	2005-05-10T22:31:04			
Observation end time	232170647.046593	232170646.02157			
Observation end date	2005-05-11T03:50:47	2005-05-11T03:50:46			
Read mode	TIMED	TIMED			

2.3 Aspect

2.4 Star Slots

2.5 FID Slots

A Summary

A.1 Status

V&V Scientist	Beth Sundheim
V&V Date (YYYY-MM-DD)	2006.03.03
V&V Edition	1
V&V Disposition and Status	OK
V&V Charge Time	8.27501874

A.2 Comments

Focal plane temperature is elevated. Calibration may be affected.