

V&V Reference Report

L2 ASCDS Version : 7.6.7

Observation 59648 - L2 Version 002
Chandra X-Ray Center

L2 Processing Date: Mar 4 2006

Contents

1	Front	2
2	OBI	3
2.1	OBI	3
2.1.1	Images	3
2.1.2	Bias	3
2.1.3	Parameters	4
2.1.4	Events	4
2.2	Compared Parameters	5
2.3	Aspect	6
2.4	Star Slots	8
2.5	FID Slots	8
A	Summary	9
A.1	Status	9
A.2	Comments	9

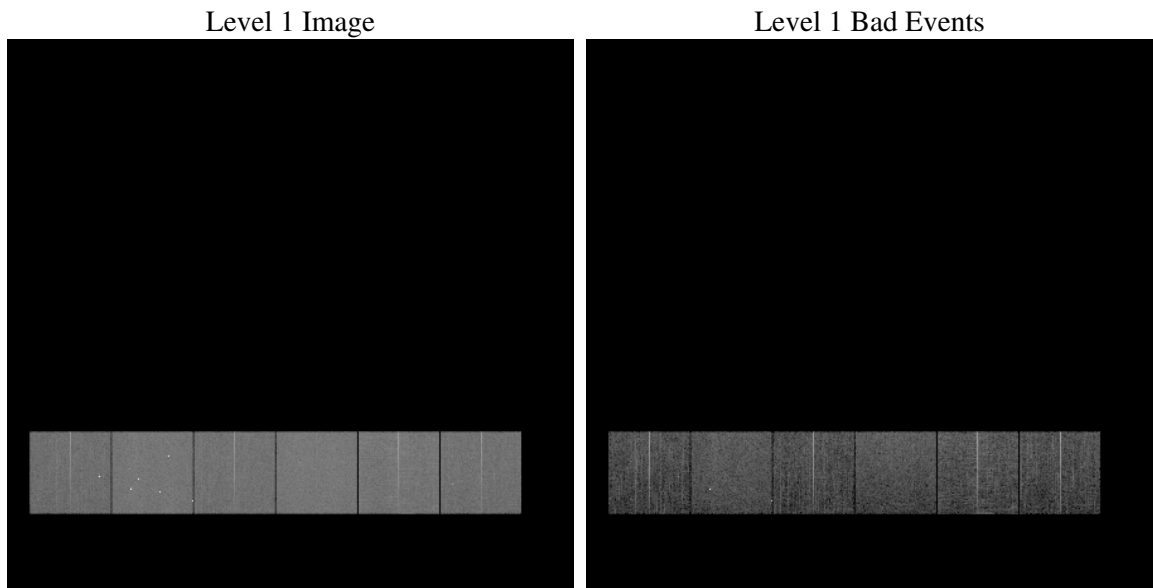
1 Front

seq_num	
obs_id	59648
title	ACIS-456789 diagnostics
observer	CHANDRA engineering request/realtime commanding
object	
dtcycle	0
cycle	P
ra_targ	0.0
dec_targ	0.0
ra_nom	245.47304093479
dec_nom	6.4883635136414
roll_nom	170.92196083909
revision	2
ontime	8275.1999691725
livetime	8170.4144044356
ontime4	6926.9529877007
ontime5	8275.1999691725
ontime6	7315.8701535761
ontime7	8275.1999691725
ontime8	7708.0290471613
ontime9	7349.3960231543
l2events	1060167

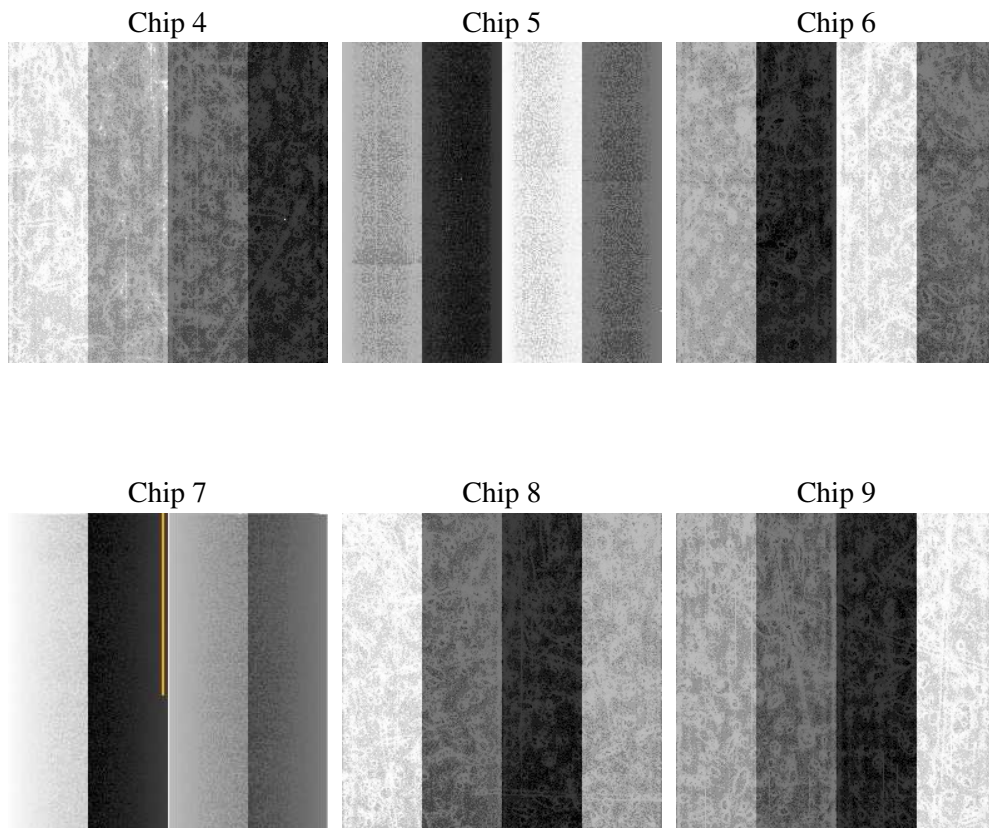
2 OBI

2.1 OBI

2.1.1 Images



2.1.2 Bias



2.1.3 Parameters

obi_num	0
ascdsver	7.6.7
caldbver	3.2.1
date	2006-03-04T07:56:14
revision	2

sched_exp_time	0.0
ontime	8277.5335070789
ontime4	6929.2865256071
ontime5	8277.5335070789
ontime6	7318.2036914825
ontime7	8277.5335070789
ontime8	7710.3625850677
ontime9	7350.6134850681
l1events	1489611

2.1.4 Events

	ccd 4	ccd 5	ccd 6	ccd 7	ccd 8	ccd 9
level 1 events	216447	269846	237772	272449	262383	230714
rejected events	54056	66367	55119	60150	62561	53641
rejected %	24%	24%	23%	22%	23%	23%

	ccd 4	ccd 5	ccd 6	ccd 7	ccd 8	ccd 9
grade 0 events	95086	25721	99078	34902	107664	97634
	43%	9%	41%	12%	41%	42%
grade 1 events	727	202	506	114	582	562
	0%	0%	0%	0%	0%	0%
grade 2 events	25303	92259	31419	64960	35337	30322
	11%	34%	13%	23%	13%	13%
grade 3 events	10663	5922	11255	14552	12986	11369
	4%	2%	4%	5%	4%	4%
grade 4 events	10665	5653	11360	14367	13140	11238
	4%	2%	4%	5%	5%	4%
grade 5 events	3069	6970	3473	6797	4340	3583
	1%	2%	1%	2%	1%	1%
grade 6 events	20674	73924	29541	83518	30695	26510
	9%	27%	12%	30%	11%	11%
grade 7 events	50260	59195	51140	53239	57639	49496
	23%	21%	21%	19%	21%	21%

2.2 Compared Parameters

Parameter	Planned	Actual	Parameter	Planned	Actual
Instrument	ACIS	ACIS	Obspar format version number	6	6
Detector	ACIS-456789	ACIS-456789	Obspar file type	PREDICTED	ACTUAL
Grating	NONE	NONE	Obspar update status	NONE	UPDATED
Data mode	FAINT	FAINT	On-chip summing requested	N	N
Observation mode	SECONDARY	SECONDARY	Subarray requested	NONE	NONE
Pointing RA	0	245.4730409347944	Alternating exposures requested	N	N
Pointing Dec	0	6.488363513641449	Primary exposure time	3.2	3.2
Pointing Roll	0.0	170.921960839092			
SIM focus pos (mm)	-0.684267	-0.6828225247311905			
SIM defocus (mm)	0	0.8505141146731063			
SIM translation stage pos (mm)	-190.132523	250.466033080201			
SIM translation stage offset (mm)	0	-0.01005468664627074			
Observation start time	233293919.99772	233293918.97275			
Observation start date	2005-05-24T03:52:00	2005-05-24T03:51:58			
Observation end time	233316002.598726	233316001.57375			
Observation end date	2005-05-24T10:00:03	2005-05-24T10:00:01			
Read mode	TIMED	TIMED			

2.3 Aspect

2.4 Star Slots

2.5 FID Slots

A Summary

A.1 Status

V&V Scientist	Beth Sundheim
V&V Date (YYYY-MM-DD)	2006.03.05
V&V Edition	1
V&V Disposition and Status	OK
V&V Charge Time	8.27519996

A.2 Comments