

V&V Reference Report

L2 ASCDS Version : 8.5.1.1

Observation 59643 - L2 Version 3
Chandra X-Ray Center

L2 Processing Date : Dec 23 2012

Contents

1	Front	2
2	OBI	3
2.1	OBI	3
2.1.1	Images	3
2.1.2	Bias	3
2.1.3	Parameters	4
2.1.4	Events	4
2.2	Compared Parameters	5
2.3	Star Slots	6
2.4	FID Slots	6
A	Summary	7
A.1	Status	7
A.2	Comments	7

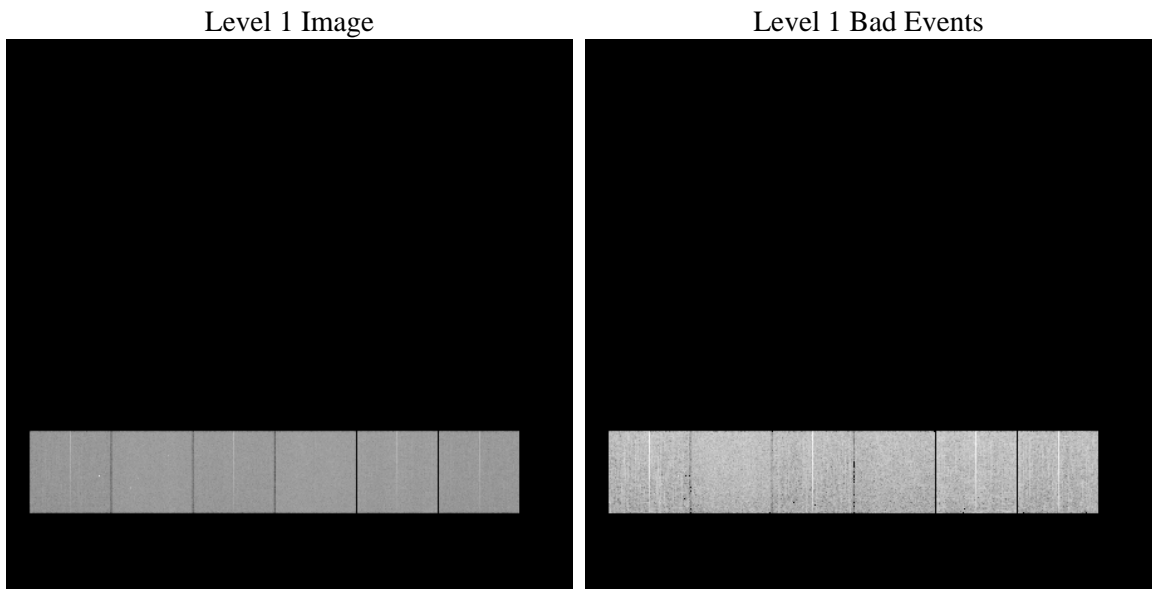
1 Front

seq_num	 	Sequence number
obs_id	59643	Observation id
title	ACIS-456789 diagnostics	Proposal title
observer	CHANDRA engineering request/realtime commanding	Principal investig
object	 	Source name
dtcycle	0	
cycle	P	events from which exps? Prim/Second/Both
ra_targ	0.0	Observer's specified target RA [deg]
dec_targ	0.0	Observer's specified target Dec [deg]
ra_nom	253.02969976713	Nominal RA [deg]
dec_nom	-48.479245122302	Nominal Dec [deg]
roll_nom	13.680990218218	Nominal Roll [deg]
revision	3	Processing version of data
ontime	8242.1393043995	Sum of GTIs [s]
livetime	8137.7723737067	Livetime [s]
ontime4	7046.0954556763	Sum of GTIs [s]
ontime5	8242.0982643962	Sum of GTIs [s]
ontime6	7590.6207053065	Sum of GTIs [s]
ontime7	8242.1393043995	Sum of GTIs [s]
ontime8	7856.2988890409	Sum of GTIs [s]
ontime9	7393.043928057	Sum of GTIs [s]
l2events	1079580	Number of level 2 events

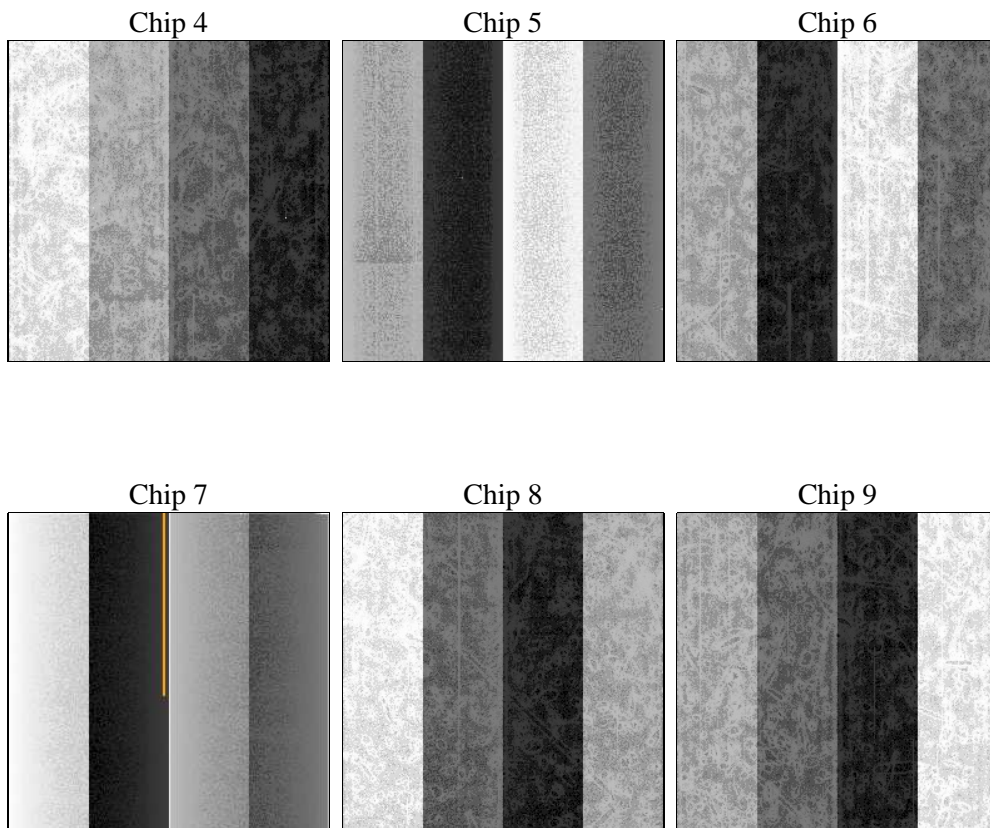
2 OBI

2.1 OBI

2.1.1 Images



2.1.2 Bias



2.1.3 Parameters

obi_num	0	Obi number	sched_exp_time	0.0	[s] Scheduled observation exposure time
ascdsver	8.5.1.1	Processing system revision	ontime	8242.1393043995	Sum of GTIs [s]
caldsver	4.5.5	 	ontime4	7046.0954556763	Sum of GTIs [s]
date	2012-12-24T00:45:13	Date and time of file creation	ontime5	8242.0982643962	Sum of GTIs [s]
revision	3	Processing version of data	ontime6	7590.6207053065	Sum of GTIs [s]
			ontime7	8242.1393043995	Sum of GTIs [s]
			ontime8	7856.2988890409	Sum of GTIs [s]
			ontime9	7393.043928057	Sum of GTIs [s]
			l1events	1489122	Number of level 1 events

2.1.4 Events

	ccd 4	ccd 5	ccd 6	ccd 7	ccd 8	ccd 9		ccd 4	ccd 5	ccd 6	ccd 7	ccd 8	ccd 9
level 1 events	220676	254314	243062	270744	266610	233716	grade 0 events	96108	39939	102761	52944	109628	97898
rejected events	56193	57805	54401	49981	64987	56611		43%	15%	42%	19%	41%	41%
rejected %	25%	22%	22%	18%	24%	24%	grade 1 events	721	205	505	186	603	568
								0%	0%	0%	0%	0%	0%
							grade 2 events	26149	72504	33195	48899	35868	30493
								11%	28%	13%	18%	13%	13%
							grade 3 events	10933	11237	11673	21890	13369	11417
								4%	4%	4%	8%	5%	4%
							grade 4 events	10942	10898	11881	21938	13150	11517
								4%	4%	4%	8%	4%	4%
							grade 5 events	3207	8710	3538	8583	4401	3670
								1%	3%	1%	3%	1%	1%
							grade 6 events	21236	62885	30127	76218	30635	26587
								9%	24%	12%	28%	11%	11%
							grade 7 events	51380	47936	49382	40086	58956	51566
								23%	18%	20%	14%	22%	22%

2.2 Compared Parameters

Parameter	Planned	Actual	Parameter	Planned	Actual
Instrument	ACIS	ACIS	Obspar format version number	7	7
Detector	ACIS-456789	ACIS-456789	Obspar file type	PREDICTED	ACTUAL
Grating	NONE	NONE	Obspar update status	NONE	UPDATED
Data mode	FAINT	FAINT	On-chip summing requested	N	N
Observation mode	SECONDARY	SECONDARY	Subarray requested	NONE	NONE
[deg] Pointing RA	0	253.0296997671343	Alternating exposures requested	N	N
[deg] Pointing Dec	0	-48.47924512230195	[s] Primary exposure time	3.2	3.2
[deg] Pointing Roll	0.0	13.68099021821818			
[mm] SIM focus pos	-0.684267	-0.6828225247311905			
[mm] SIM defocus	0	0.8505141146731063			
[mm] SIM translation stage pos	-190.132523	250.466033080201			
[mm] SIM translation stage offset	0	-0.01005468664627074			
[s] Observation start time (MET)	233748044.218454	233748043.19344			
Observation start date	2005-05-29T10:00:44	2005-05-29T10:00:43			
[s] Observation end time (MET)	233771924.669543	233771923.64453			
Observation end date	2005-05-29T16:38:45	2005-05-29T16:38:43			
Read mode	TIMED	TIMED			

2.3 Star Slots

2.4 FID Slots

A Summary

A.1 Status

V&V Scientist	Jen Lauer
V&V Date (YYYY-MM-DD)	2013.01.16
V&V Edition	1
V&V Disposition and Status	OK
V&V Charge Time	8.2421393043995

A.2 Comments