

V&V Reference Report

L2 ASCDS Version : 7.6.7.1

Observation 59603 - L2 Version 002
Chandra X-Ray Center

L2 Processing Date : Mar 12 2006

Contents

1	Front	2
2	OBI	3
2.1	OBI	3
2.1.1	Images	3
2.1.2	Bias	3
2.1.3	Parameters	4
2.1.4	Events	4
2.2	Compared Parameters	5
2.3	Aspect	6
2.4	Star Slots	8
2.5	FID Slots	8
A	Summary	9
A.1	Status	9
A.2	Comments	9

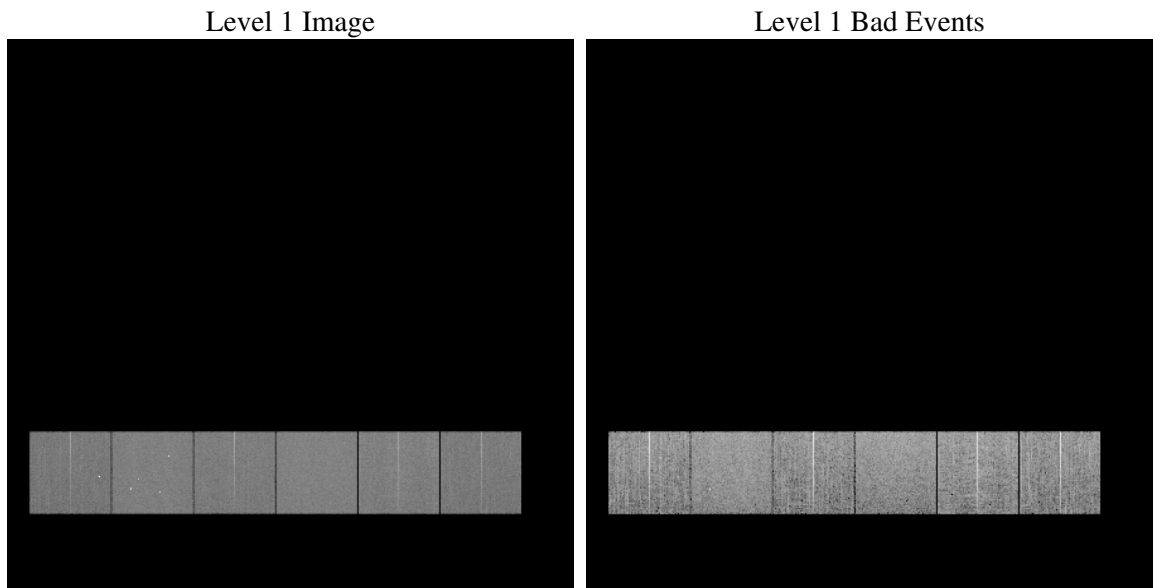
1 Front

seq_num	
obs_id	59603
title	ACIS-456789 diagnostics
observer	CHANDRA engineering request/realtime commanding
object	
dtcycle	0
cycle	P
ra_targ	0.0
dec_targ	0.0
ra_nom	299.97916737283
dec_nom	-21.478964716134
roll_nom	99.76357441315
revision	2
ontime	7795.1999709606
livetime	7696.4924552224
ontime4	6557.1494386494
ontime5	7795.1999709606
ontime6	7169.6930833757
ontime7	7795.1999709606
ontime8	7279.8859632909
ontime9	6842.3544662893
l2events	991722

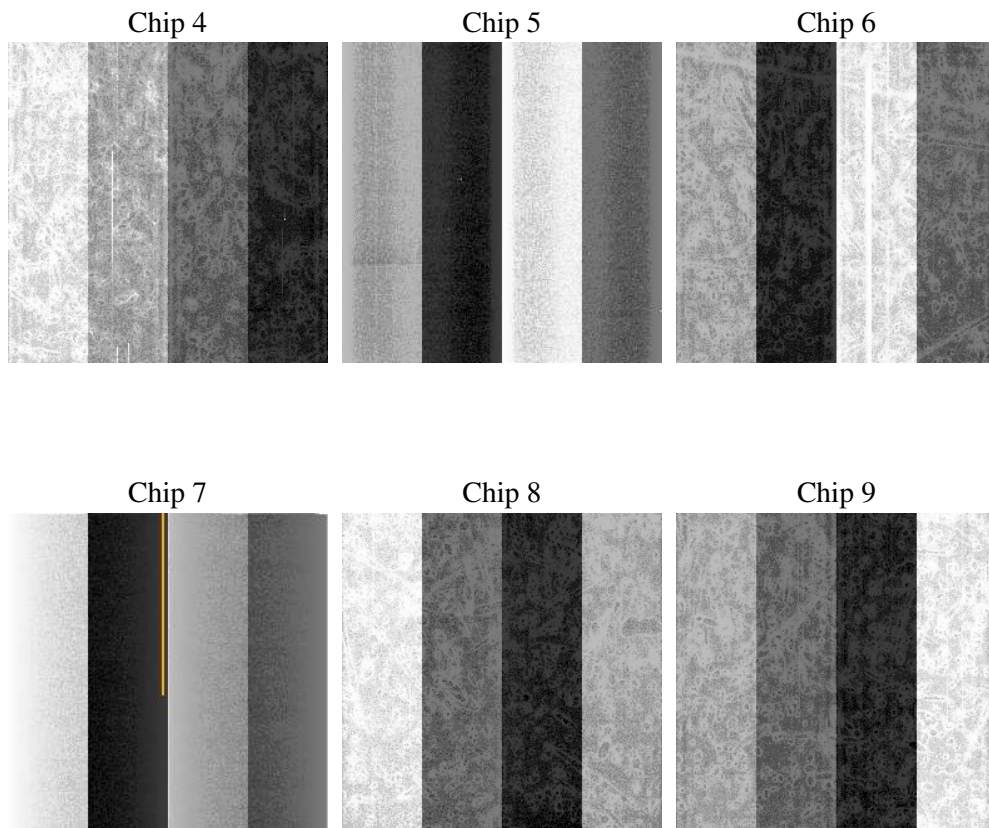
2 OBI

2.1 OBI

2.1.1 Images



2.1.2 Bias



2.1.3 Parameters

obi_num	0
ascdsver	7.6.7.1
caldbver	3.2.1
date	2006-03-12T05:22:02
revision	2

sched_exp_time	0.0
ontime	7797.85353598
ontime4	6559.8030036688
ontime5	7797.85353598
ontime6	7172.3466483951
ontime7	7797.85353598
ontime8	7282.5395283103
ontime9	6845.0080313087
l1events	1403830

2.1.4 Events

	ccd 4	ccd 5	ccd 6	ccd 7	ccd 8	ccd 9
level 1 events	206212	246881	230012	257140	247570	216015
rejected events	55186	60429	53792	58107	61473	55463
rejected %	26%	24%	23%	22%	24%	25%

	ccd 4	ccd 5	ccd 6	ccd 7	ccd 8	ccd 9
grade 0 events	87671	22845	95997	33923	100306	87991
	42%	9%	41%	13%	40%	40%
grade 1 events	683	126	480	97	566	545
	0%	0%	0%	0%	0%	0%
grade 2 events	24105	84610	30588	59880	32596	27698
	11%	34%	13%	23%	13%	12%
grade 3 events	9937	6084	10964	14143	12399	10455
	4%	2%	4%	5%	5%	4%
grade 4 events	10214	5893	10973	14000	12453	10369
	4%	2%	4%	5%	5%	4%
grade 5 events	2998	6095	3485	6703	4198	3447
	1%	2%	1%	2%	1%	1%
grade 6 events	19172	67105	27770	77170	28421	24135
	9%	27%	12%	30%	11%	11%
grade 7 events	51432	54123	49755	51224	56631	51375
	24%	21%	21%	19%	22%	23%

2.2 Compared Parameters

Parameter	Planned	Actual	Parameter	Planned	Actual
Instrument	ACIS	ACIS	Obspar format version number	6	6
Detector	ACIS-456789	ACIS-456789	Obspar file type	PREDICTED	ACTUAL
Grating	NONE	NONE	Obspar update status	NONE	UPDATED
Data mode	FAINT	FAINT	On-chip summing requested	N	N
Observation mode	SECONDARY	SECONDARY	Subarray requested	NONE	NONE
Pointing RA	0	299.979167372833	Alternating exposures requested	N	N
Pointing Dec	0	-21.47896471613411	Primary exposure time	3.2	3.2
Pointing Roll	0.0	99.76357441315005			
SIM focus pos (mm)	-0.684267	-0.6828225247311905			
SIM defocus (mm)	0	0.8505141146731063			
SIM translation stage pos (mm)	-190.132523	250.466033080201			
SIM translation stage offset (mm)	0	-0.01005468664627074			
Observation start time	235767074.960572	235767073.93558			
Observation start date	2005-06-21T18:51:15	2005-06-21T18:51:13			
Observation end time	235807441.512414	235807440.48743			
Observation end date	2005-06-22T06:04:02	2005-06-22T06:04:00			
Read mode	TIMED	TIMED			

2.3 Aspect

2.4 Star Slots

2.5 FID Slots

A Summary

A.1 Status

V&V Scientist	Jen Lauer
V&V Date (YYYY-MM-DD)	2006.03.13
V&V Edition	1
V&V Disposition and Status	OK
V&V Charge Time	7.79519997

A.2 Comments