

V&V Reference Report

L2 ASCDS Version : 8.5.1.1

Observation 59598 - L2 Version 3
Chandra X-Ray Center

L2 Processing Date : Dec 25 2012

Contents

| | | |
|----------|-------------------------------|----------|
| 1 | Front | 2 |
| 2 | OBI | 3 |
| 2.1 | OBI | 3 |
| 2.1.1 | Images | 3 |
| 2.1.2 | Bias | 3 |
| 2.1.3 | Parameters | 4 |
| 2.1.4 | Events | 4 |
| 2.2 | Compared Parameters | 5 |
| 2.3 | Star Slots | 6 |
| 2.4 | FID Slots | 6 |
| A | Summary | 7 |
| A.1 | Status | 7 |
| A.2 | Comments | 7 |

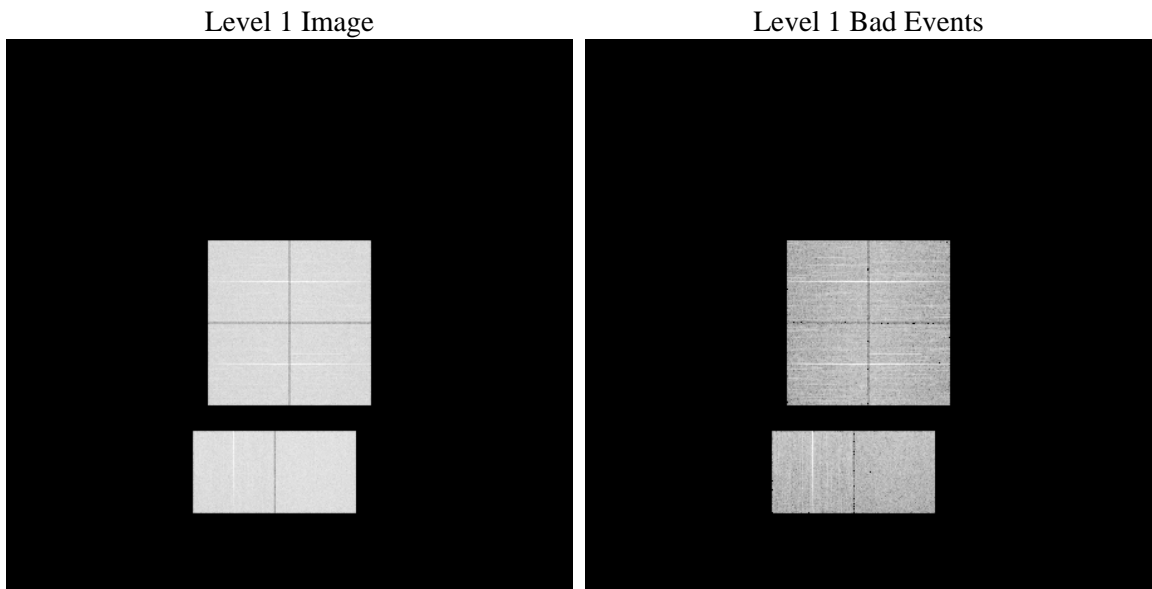
1 Front

| | | |
|----------|---|---|
| seq_num | | Sequence number |
| obs_id | 59598 | Observation id |
| title | ACIS-012367 diagnostics | Proposal title |
| observer | CHANDRA engineering request/realtime commanding | Principal investig |
| object | | Source name |
| dtcycle | 0 | |
| cycle | P | events from which exps? Prim/Second/Both |
| ra_targ | 0.0 | Observer's specified target RA [deg] |
| dec_targ | 0.0 | Observer's specified target Dec [deg] |
| ra_nom | 257.9883198786 | Nominal RA [deg] |
| dec_nom | -1.0261206694066 | Nominal Dec [deg] |
| roll_nom | 213.05710054581 | Nominal Roll [deg] |
| revision | 3 | Processing version of data |
| ontime | 8203.9499184191 | Sum of GTIs [s] |
| livetime | 8100.0665647265 | Livetime [s] |
| ontime0 | 7558.9543097019 | Sum of GTIs [s] |
| ontime1 | 7695.0345712304 | Sum of GTIs [s] |
| ontime2 | 7293.1120458841 | Sum of GTIs [s] |
| ontime3 | 7413.1922165751 | Sum of GTIs [s] |
| ontime6 | 7967.194357276 | Sum of GTIs [s] |
| ontime7 | 8203.9499184191 | Sum of GTIs [s] |
| l2events | 1081385 | Number of level 2 events |

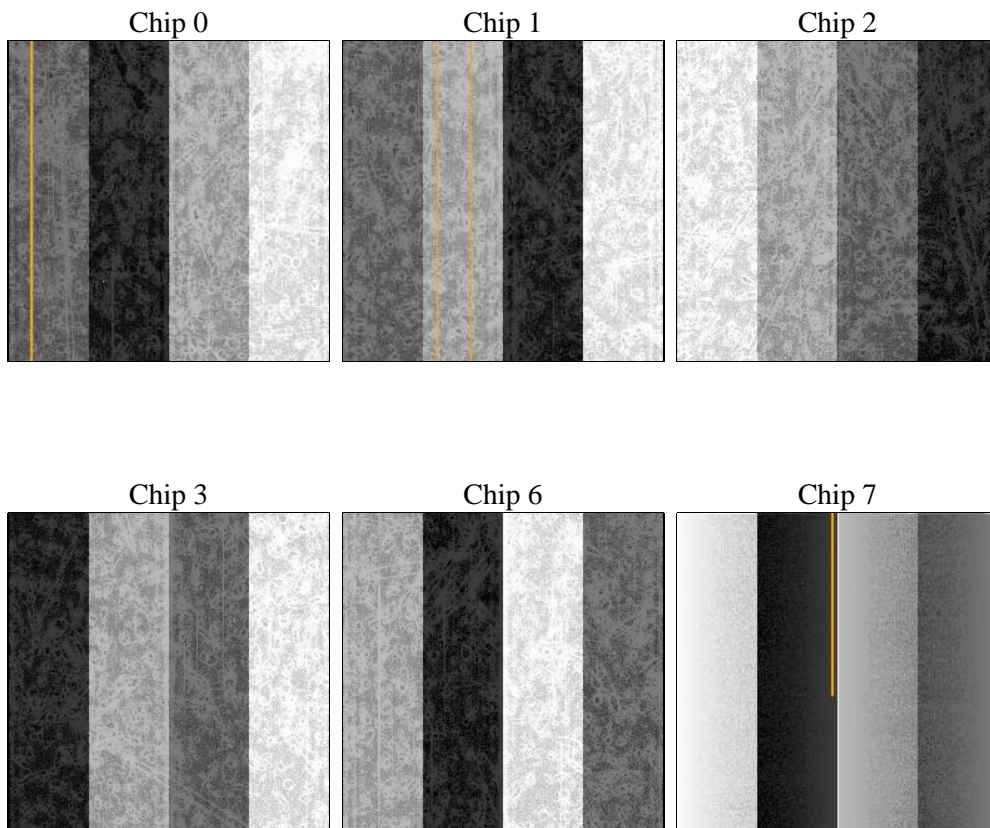
2 OBI

2.1 OBI

2.1.1 Images



2.1.2 Bias



2.1.3 Parameters

| | | | | | |
|----------|---------------------|--------------------------------|----------------|-----------------|---|
| obi_num | 0 | Obi number | sched_exp_time | 0.0 | [s] Scheduled observation exposure time |
| ascdsver | 8.5.1.1 | Processing system revision | ontime | 8203.9499184191 | Sum of GTIs [s] |
| caldsver | 4.5.5 | | ontime0 | 7558.9543097019 | Sum of GTIs [s] |
| date | 2012-12-25T08:24:17 | Date and time of file creation | ontime1 | 7695.0345712304 | Sum of GTIs [s] |
| revision | 3 | Processing version of data | ontime2 | 7293.1120458841 | Sum of GTIs [s] |
| | | | ontime3 | 7413.1922165751 | Sum of GTIs [s] |
| | | | ontime6 | 7967.194357276 | Sum of GTIs [s] |
| | | | ontime7 | 8203.9499184191 | Sum of GTIs [s] |
| | | | l1events | 1488690 | Number of level 1 events |

2.1.4 Events

| | ccd 0 | ccd 1 | ccd 2 | ccd 3 | ccd 6 | ccd 7 | | ccd 0 | ccd 1 | ccd 2 | ccd 3 | ccd 6 | ccd 7 |
|-----------------|--------|--------|--------|--------|--------|--------|----------------|--------|--------|-------|--------|--------|-------|
| level 1 events | 237384 | 242891 | 233162 | 238724 | 261838 | 274691 | grade 0 events | 100169 | 100865 | 99132 | 101597 | 107548 | 51019 |
| rejected events | 56595 | 58349 | 57812 | 59787 | 63939 | 55091 | | 42% | 41% | 42% | 42% | 41% | 18% |
| rejected % | 23% | 24% | 24% | 25% | 24% | 20% | grade 1 events | 609 | 563 | 686 | 733 | 565 | 198 |
| | | | | | | | | 0% | 0% | 0% | 0% | 0% | 0% |
| | | | | | | | grade 2 events | 31567 | 33825 | 29551 | 30223 | 34734 | 48629 |
| | | | | | | | | 13% | 13% | 12% | 12% | 13% | 17% |
| | | | | | | | grade 3 events | 11793 | 11760 | 11671 | 11725 | 12116 | 21663 |
| | | | | | | | | 4% | 4% | 5% | 4% | 4% | 7% |
| | | | | | | | grade 4 events | 11812 | 11753 | 11388 | 11831 | 12312 | 21480 |
| | | | | | | | | 4% | 4% | 4% | 4% | 4% | 7% |
| | | | | | | | grade 5 events | 3362 | 3469 | 3064 | 3492 | 3752 | 9148 |
| | | | | | | | | 1% | 1% | 1% | 1% | 1% | 3% |
| | | | | | | | grade 6 events | 27185 | 28119 | 25179 | 25244 | 32975 | 78798 |
| | | | | | | | | 11% | 11% | 10% | 10% | 12% | 28% |
| | | | | | | | grade 7 events | 50887 | 52537 | 52491 | 53879 | 57836 | 43756 |
| | | | | | | | | 21% | 21% | 22% | 22% | 22% | 15% |

2.2 Compared Parameters

| Parameter | Planned | Actual |
|-----------------------------------|---------------------|----------------------|
| Instrument | ACIS | ACIS |
| Detector | ACIS-012367 | ACIS-012367 |
| Grating | NONE | NONE |
| Data mode | FAINT | FAINT |
| Observation mode | SECONDARY | SECONDARY |
| [deg] Pointing RA | 0 | 257.9883198785962 |
| [deg] Pointing Dec | 0 | -1.026120669406583 |
| [deg] Pointing Roll | 0.0 | 213.0571005458057 |
| [mm] SIM focus pos | -0.782348 | -0.6828225247311905 |
| [mm] SIM defocus | 0 | 0.8505141146731063 |
| [mm] SIM translation stage pos | -233.592463 | 250.466033080201 |
| [mm] SIM translation stage offset | 0 | -0.01005468664627074 |
| [s] Observation start time (MET) | 236034249.422764 | 236034248.39779 |
| Observation start date | 2005-06-24T21:04:09 | 2005-06-24T21:04:08 |
| [s] Observation end time (MET) | 236055559.173756 | 236055558.14876 |
| Observation end date | 2005-06-25T02:59:19 | 2005-06-25T02:59:18 |
| Read mode | TIMED | TIMED |

| Parameter | Planned | Actual |
|---------------------------------|-----------|---------|
| Obspar format version number | 7 | 7 |
| Obspar file type | PREDICTED | ACTUAL |
| Obspar update status | NONE | UPDATED |
| On-chip summing requested | N | N |
| Subarray requested | NONE | NONE |
| Alternating exposures requested | N | N |
| [s] Primary exposure time | 3.2 | 3.2 |

2.3 Star Slots

2.4 FID Slots

A Summary

A.1 Status

| | |
|----------------------------|-----------------|
| V&V Scientist | Jen Lauer |
| V&V Date (YYYY-MM-DD) | 2013.01.16 |
| V&V Edition | 1 |
| V&V Disposition and Status | OK |
| V&V Charge Time | 8.2039499184191 |

A.2 Comments