

# V&V Reference Report

## L2 ASCDS Version : 7.6.7.1

Observation 59591 - L2 Version 002  
Chandra X-Ray Center

L2 Processing Date : Mar 12 2006

## Contents

<b>1</b>	<b>Front</b>	<b>2</b>
<b>2</b>	<b>OBI</b>	<b>3</b>
2.1	OBI . . . . .	3
2.1.1	Images . . . . .	3
2.1.2	Bias . . . . .	3
2.1.3	Parameters . . . . .	4
2.1.4	Events . . . . .	4
2.2	Compared Parameters . . . . .	5
2.3	Aspect . . . . .	6
2.4	Star Slots . . . . .	8
2.5	FID Slots . . . . .	8
<b>A</b>	<b>Summary</b>	<b>9</b>
A.1	Status . . . . .	9
A.2	Comments . . . . .	9

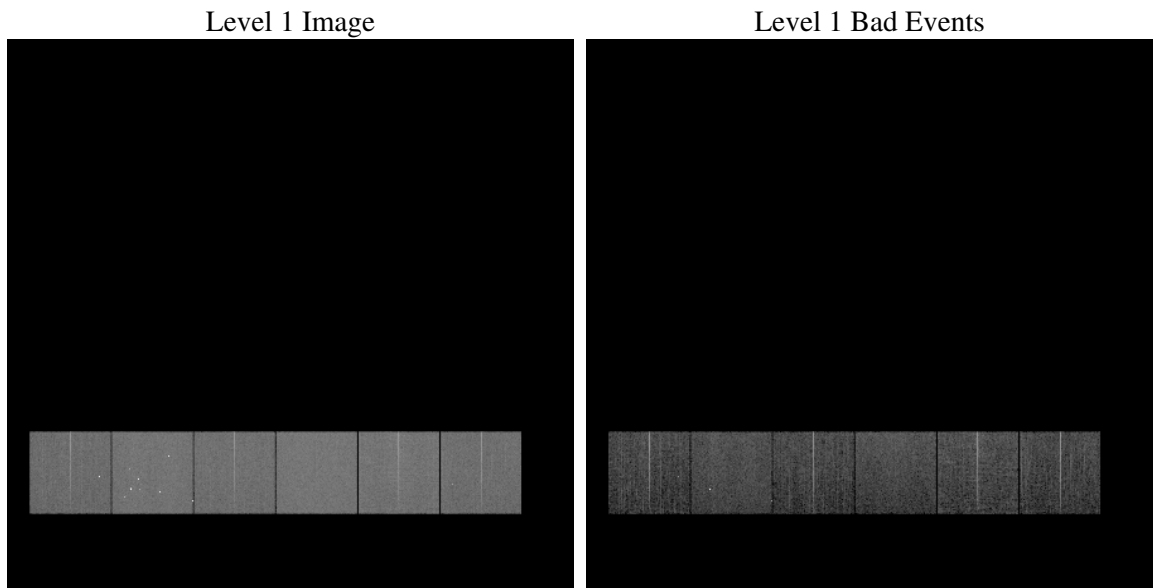
# 1 Front

seq_num	&#160
obs_id	59591
title	ACIS-456789 diagnostics
observer	CHANDRA engineering request/realtime commanding
object	&#160
dtcycle	0
cycle	P
ra_targ	0.0
dec_targ	0.0
ra_nom	258.98870730816
dec_nom	0.97371900906009
roll_nom	213.81463879477
revision	2
ontime	8276.7704282403
livetime	8171.9649774051
ontime4	6863.827180028
ontime5	8276.8114682436
ontime6	7385.5838463008
ontime7	8276.7704282403
ontime8	7664.3899126649
ontime9	7165.0740671158
l2events	1036142

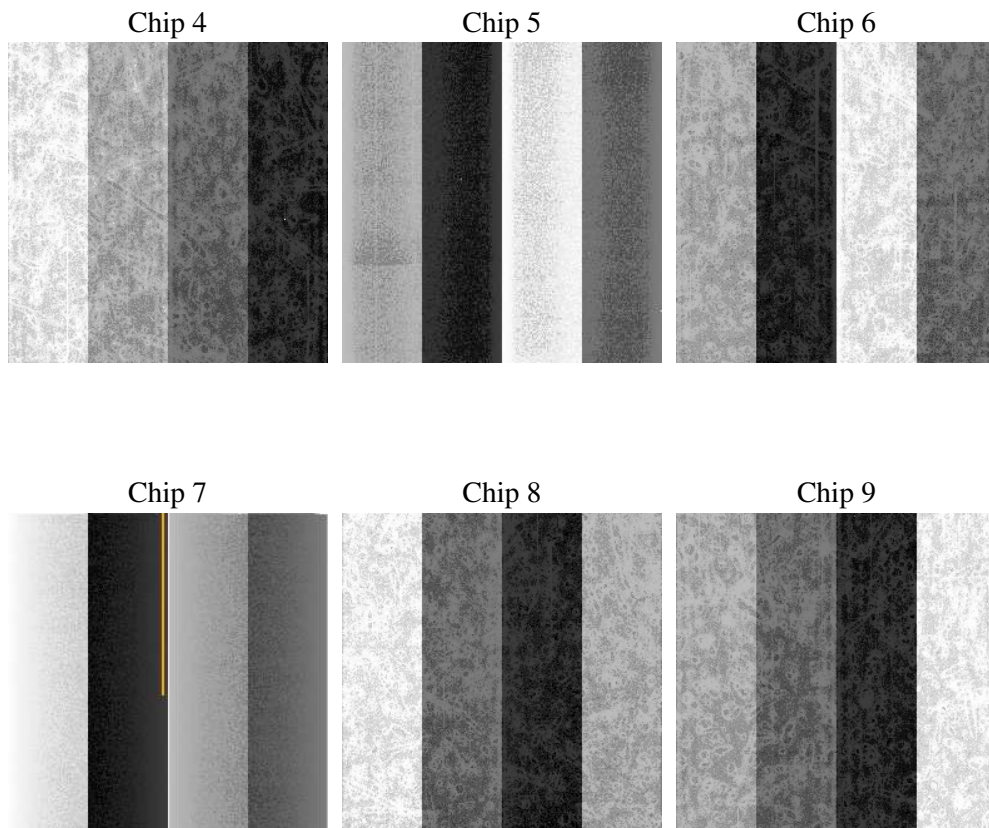
## 2 OBI

### 2.1 OBI

#### 2.1.1 Images



#### 2.1.2 Bias



### 2.1.3 Parameters

obi_num	0
ascdsver	7.6.7.1
caldbver	3.2.1
date	2006-03-12T06:11:23
revision	2

sched_exp_time	0.0
ontime	8277.5335281193
ontime4	6864.4671598971
ontime5	8277.5335281193
ontime6	7386.2648661733
ontime7	8277.5335281193
ontime8	7664.9888525605
ontime9	7165.8782069981
l1events	1489885

### 2.1.4 Events

	ccd 4	ccd 5	ccd 6	ccd 7	ccd 8	ccd 9
level 1 events	216088	272820	237950	273163	262305	227559
rejected events	58478	69769	58087	63456	67378	58249
rejected %	27%	25%	24%	23%	25%	25%

	ccd 4	ccd 5	ccd 6	ccd 7	ccd 8	ccd 9
grade 0 events	92687	25609	96896	32970	104792	93666
	42%	9%	40%	12%	39%	41%
grade 1 events	825	115	480	92	546	559
	0%	0%	0%	0%	0%	0%
grade 2 events	24069	90407	31324	65451	34546	28560
	11%	33%	13%	23%	13%	12%
grade 3 events	10428	5603	11175	14161	12907	10681
	4%	2%	4%	5%	4%	4%
grade 4 events	10451	5548	11208	13932	12525	10856
	4%	2%	4%	5%	4%	4%
grade 5 events	3029	6558	3701	6998	4509	3790
	1%	2%	1%	2%	1%	1%
grade 6 events	19975	75884	29260	83193	30157	25547
	9%	27%	12%	30%	11%	11%
grade 7 events	54624	63096	53906	56366	62323	53900
	25%	23%	22%	20%	23%	23%

## 2.2 Compared Parameters

Parameter	Planned	Actual	Parameter	Planned	Actual
Instrument	ACIS	ACIS	Obspar format version number	6	6
Detector	ACIS-456789	ACIS-456789	Obspar file type	PREDICTED	ACTUAL
Grating	NONE	NONE	Obspar update status	NONE	UPDATED
Data mode	FAINT	FAINT	On-chip summing requested	N	N
Observation mode	SECONDARY	SECONDARY	Subarray requested	NONE	NONE
Pointing RA	0	258.9887073081644	Alternating exposures requested	N	N
Pointing Dec	0	0.9737190090600933	Primary exposure time	3.2	3.2
Pointing Roll	0.0	213.814638794773			
SIM focus pos (mm)	-0.684267	-0.6828225247311905			
SIM defocus (mm)	0	0.8505141146731063			
SIM translation stage pos (mm)	-190.132523	250.466033080201			
SIM translation stage offset (mm)	0	-0.01005468664627074			
Observation start time	236261813.783177	236261812.75819			
Observation start date	2005-06-27T12:16:54	2005-06-27T12:16:52			
Observation end time	236283123.534151	236283122.50916			
Observation end date	2005-06-27T18:12:04	2005-06-27T18:12:02			
Read mode	TIMED	TIMED			

## 2.3 Aspect



## **2.4 Star Slots**

## **2.5 FID Slots**



## A Summary

### A.1 Status

V&V Scientist	Beth Sundheim
V&V Date (YYYY-MM-DD)	2006.03.13
V&V Edition	1
V&V Disposition and Status	OK
V&V Charge Time	8.27677042

### A.2 Comments

Focal plane temperature is elevated during latter ~6 ksec of observation.