

V&V Reference Report

L2 ASCDS Version : 7.6.7.1

Observation 59579 - L2 Version 002
Chandra X-Ray Center

L2 Processing Date : Mar 12 2006

Contents

1	Front	2
2	OBI	3
2.1	OBI	3
2.1.1	Images	3
2.1.2	Bias	3
2.1.3	Parameters	4
2.1.4	Events	4
2.2	Compared Parameters	5
2.3	Aspect	6
2.4	Star Slots	8
2.5	FID Slots	8
A	Summary	9
A.1	Status	9
A.2	Comments	9

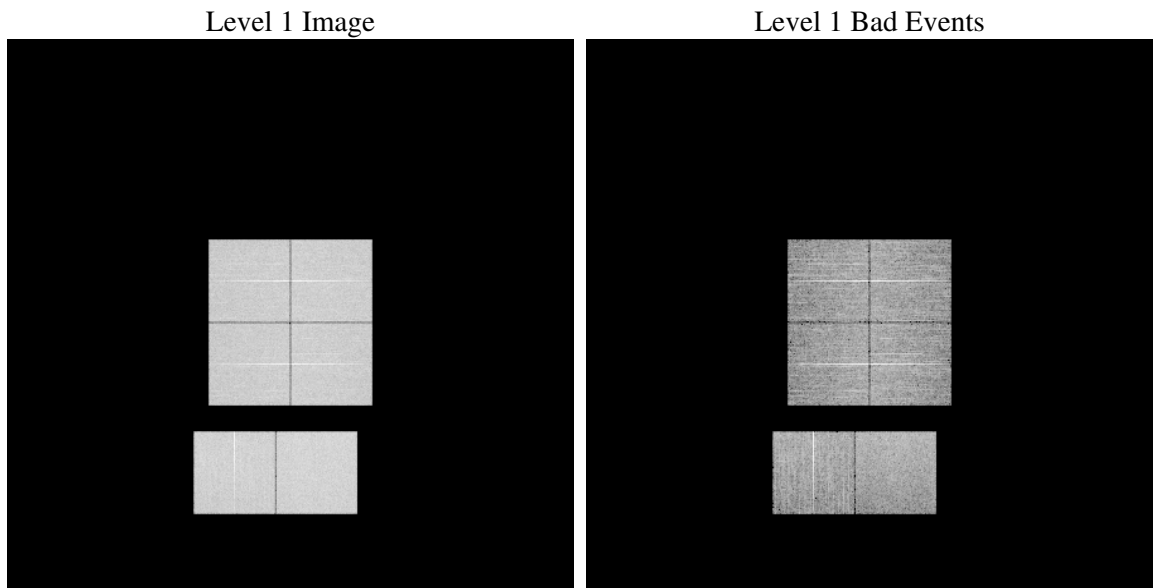
1 Front

seq_num	
obs_id	59579
title	ACIS-012367 diagnostics
observer	CHANDRA engineering request/realtime commanding
object	
dtcycle	0
cycle	P
ra_targ	0.0
dec_targ	0.0
ra_nom	296.52479838096
dec_nom	-49.976265092427
roll_nom	23.088989356201
revision	2
ontime	8277.1969361901
livetime	8172.3860846545
ontime0	7651.7294882536
ontime1	7940.2174350321
ontime2	7528.6542681456
ontime3	7716.4667648375
ontime6	8115.3121517897
ontime7	8277.1969361901
l2events	1064795

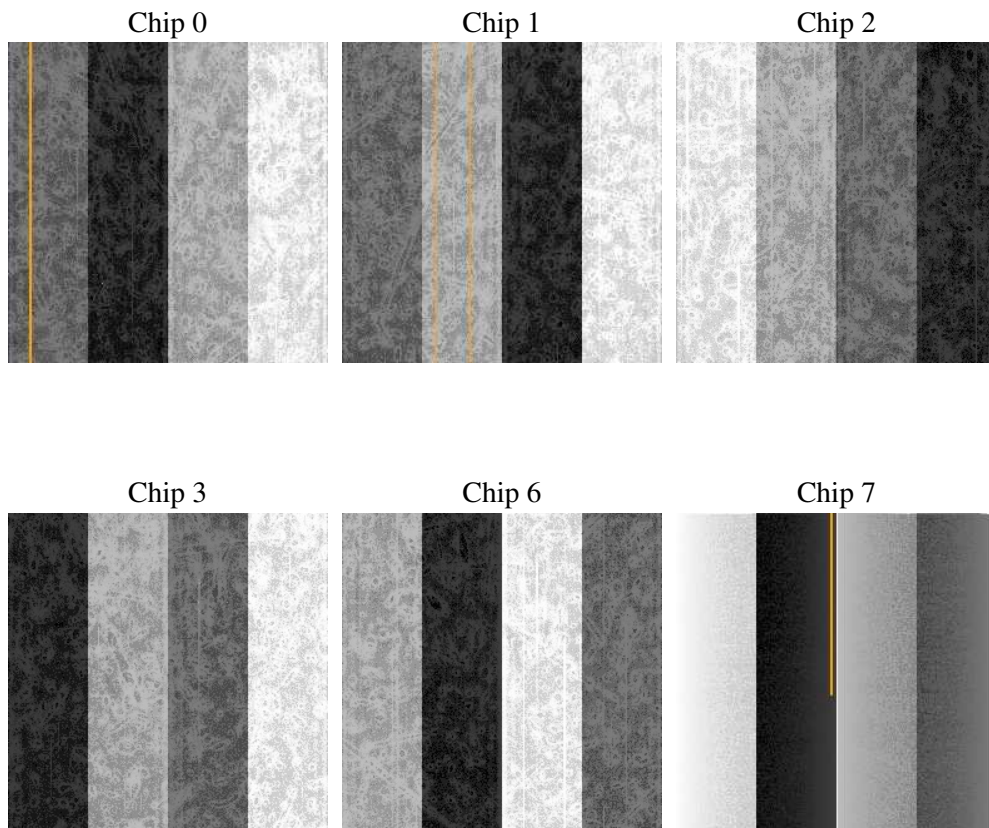
2 OBI

2.1 OBI

2.1.1 Images



2.1.2 Bias



2.1.3 Parameters

obi_num	0
ascdsver	7.6.7.1
caldsver	3.2.1
date	2006-03-12T07:10:16
revision	2

sched_exp_time	0.0
ontime	8277.5332684815
ontime0	7652.0247805417
ontime1	7940.4716873169
ontime2	7528.867480427
ontime3	7716.8441371322
ontime6	8115.4843240976
ontime7	8277.5332684815
l1events	1486855

2.1.4 Events

	ccd 0	ccd 1	ccd 2	ccd 3	ccd 6	ccd 7
level 1 events	233732	245350	233437	241315	260024	272997
rejected events	57234	60895	57777	61601	64397	65019
rejected %	24%	24%	24%	25%	24%	23%

	ccd 0	ccd 1	ccd 2	ccd 3	ccd 6	ccd 7
grade 0 events	96884	100154	98543	100924	105077	31979
	41%	40%	42%	41%	40%	11%
grade 1 events	561	549	652	687	528	110
	0%	0%	0%	0%	0%	0%
grade 2 events	31044	33556	29056	30333	34115	64498
	13%	13%	12%	12%	13%	23%
grade 3 events	11396	11561	11593	11574	12084	13710
	4%	4%	4%	4%	4%	5%
grade 4 events	11323	11717	11585	11950	12107	13536
	4%	4%	4%	4%	4%	4%
grade 5 events	3435	3565	3183	3590	3801	7160
	1%	1%	1%	1%	1%	2%
grade 6 events	25851	27467	24883	24933	32244	84255
	11%	11%	10%	10%	12%	30%
grade 7 events	53238	56781	53942	57324	60068	57749
	22%	23%	23%	23%	23%	21%

2.2 Compared Parameters

Parameter	Planned	Actual	Parameter	Planned	Actual
Instrument	ACIS	ACIS	Obspar format version number	6	6
Detector	ACIS-012367	ACIS-012367	Obspar file type	PREDICTED	ACTUAL
Grating	NONE	NONE	Obspar update status	NONE	UPDATED
Data mode	FAINT	FAINT	On-chip summing requested	N	N
Observation mode	SECONDARY	SECONDARY	Subarray requested	NONE	NONE
Pointing RA	0	296.5247983809626	Alternating exposures requested	N	N
Pointing Dec	0	-49.97626509242741	Primary exposure time	3.2	3.2
Pointing Roll	0.0	23.08898935620147			
SIM focus pos (mm)	-0.782348	-0.6828225247311905			
SIM defocus (mm)	0	0.8505141146731063			
SIM translation stage pos (mm)	-233.592463	250.466033080201			
SIM translation stage offset (mm)	0	-0.01005468664627074			
Observation start time	236957495.664993	236957494.64			
Observation start date	2005-07-05T13:31:36	2005-07-05T13:31:34			
Observation end time	236969244.215528	236969243.19053			
Observation end date	2005-07-05T16:47:24	2005-07-05T16:47:23			
Read mode	TIMED	TIMED			

2.3 Aspect

2.4 Star Slots

2.5 FID Slots

A Summary

A.1 Status

V&V Scientist	Beth Sundheim
V&V Date (YYYY-MM-DD)	2006.03.13
V&V Edition	1
V&V Disposition and Status	OK
V&V Charge Time	8.27719693

A.2 Comments

Focal plane temperasture is elevated throughout entire observation.