

V&V Reference Report

L2 ASCDS Version : 7.6.7.1

Observation 59537 - L2 Version 002
Chandra X-Ray Center

L2 Processing Date : Mar 16 2006

Contents

1	Front	2
2	OBI	3
2.1	OBI	3
2.1.1	Images	3
2.1.2	Bias	3
2.1.3	Parameters	4
2.1.4	Events	4
2.2	Compared Parameters	5
2.3	Aspect	6
2.4	Star Slots	8
2.5	FID Slots	8
A	Summary	9
A.1	Status	9
A.2	Comments	9

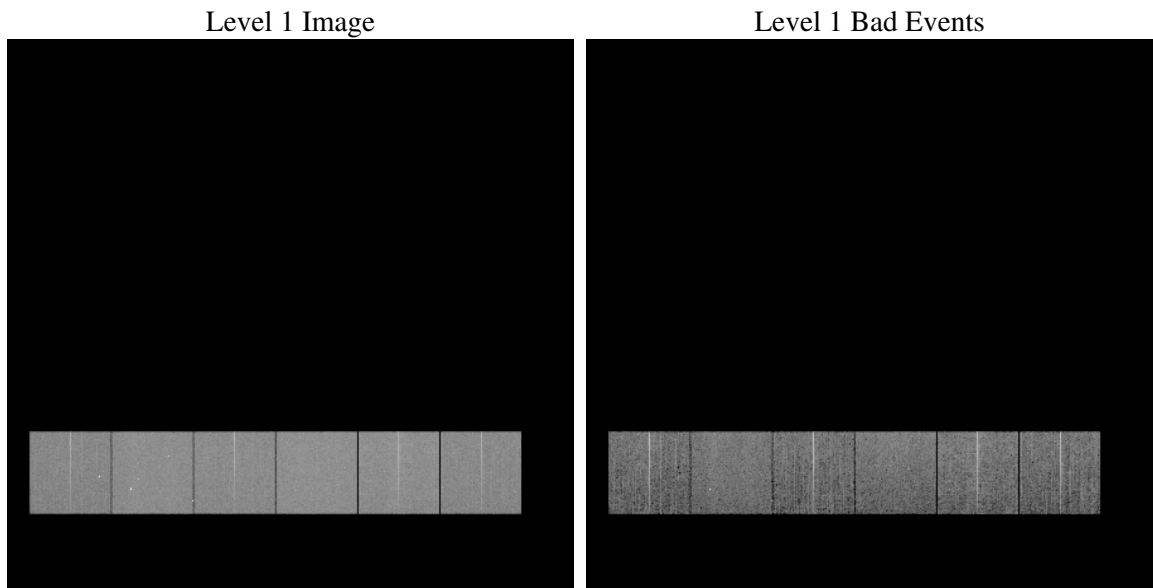
1 Front

seq_num	
obs_id	59537
title	ACIS-456789 diagnostics
observer	CHANDRA engineering request/realtime commanding
object	
dtcycle	0
cycle	P
ra_targ	0.0
dec_targ	0.0
ra_nom	286.64163396217
dec_nom	-46.797698395948
roll_nom	331.72643323083
revision	2
ontime	8274.9059178531
livetime	8170.1240765711
ontime4	7153.6507748067
ontime5	8274.9469578564
ontime6	7724.0215481222
ontime7	8274.9059178531
ontime8	7915.3216841817
ontime9	7480.8253248334
l2events	1039345

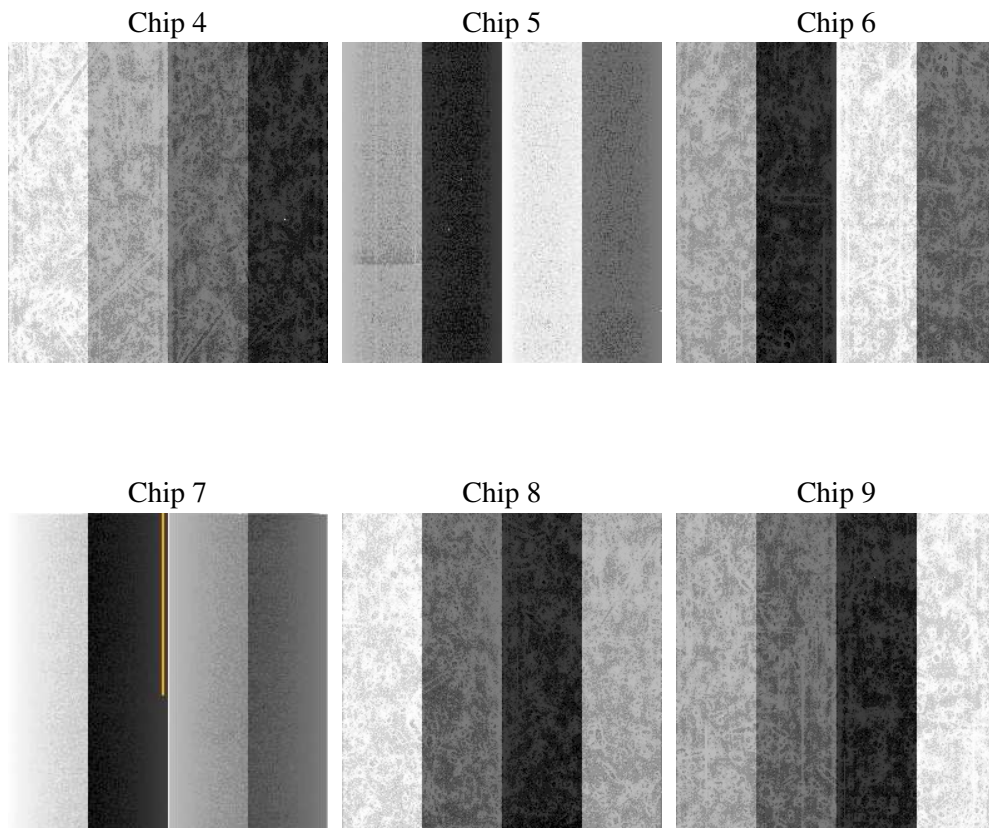
2 OBI

2.1 OBI

2.1.1 Images



2.1.2 Bias



2.1.3 Parameters

obi_num	0
ascdsver	7.6.7.1
caldsver	3.2.1
date	2006-03-16T04:00:45
revision	2

sched_exp_time	0.0
ontime	8277.5342587829
ontime4	7156.1559957266
ontime5	8277.5342587829
ontime6	7726.5678090453
ontime7	8277.5342587829
ontime8	7917.785865128
ontime9	7483.4947057664
l1events	1487407

2.1.4 Events

	ccd 4	ccd 5	ccd 6	ccd 7	ccd 8	ccd 9
level 1 events	218537	257440	245620	269502	265391	230917
rejected events	59569	66539	61270	63423	68369	59532
rejected %	27%	25%	24%	23%	25%	25%

	ccd 4	ccd 5	ccd 6	ccd 7	ccd 8	ccd 9
grade 0 events	93018	19339	99689	33544	105874	94797
	42%	7%	40%	12%	39%	41%
grade 1 events	730	135	504	91	652	557
	0%	0%	0%	0%	0%	0%
grade 2 events	24585	88127	32421	63294	34847	29096
	11%	34%	13%	23%	13%	12%
grade 3 events	10800	5751	11417	14039	13001	11066
	4%	2%	4%	5%	4%	4%
grade 4 events	10434	5584	11360	14031	13014	10820
	4%	2%	4%	5%	4%	4%
grade 5 events	3321	6336	3687	7225	4727	3853
	1%	2%	1%	2%	1%	1%
grade 6 events	20209	72181	29533	81267	30371	25680
	9%	28%	12%	30%	11%	11%
grade 7 events	55440	59987	57009	56011	62905	55048
	25%	23%	23%	20%	23%	23%

2.2 Compared Parameters

Parameter	Planned	Actual	Parameter	Planned	Actual
Instrument	ACIS	ACIS	Obspar format version number	6	6
Detector	ACIS-456789	ACIS-456789	Obspar file type	PREDICTED	ACTUAL
Grating	NONE	NONE	Obspar update status	NONE	UPDATED
Data mode	FAINT	FAINT	On-chip summing requested	N	N
Observation mode	SECONDARY	SECONDARY	Subarray requested	NONE	NONE
Pointing RA	0	286.641633962166	Alternating exposures requested	N	N
Pointing Dec	0	-46.79769839594767	Primary exposure time	3.2	3.2
Pointing Roll	0.0	331.7264332308274			
SIM focus pos (mm)	-0.684267	-0.6828225247311905			
SIM defocus (mm)	0	0.8505141146731063			
SIM translation stage pos (mm)	-190.132523	250.466033080201			
SIM translation stage offset (mm)	0	-0.01005468664627074			
Observation start time	238318662.927281	238318661.90229			
Observation start date	2005-07-21T07:37:43	2005-07-21T07:37:41			
Observation end time	238341122.728309	238341121.70331			
Observation end date	2005-07-21T13:52:03	2005-07-21T13:52:01			
Read mode	TIMED	TIMED			

2.3 Aspect

2.4 Star Slots

2.5 FID Slots

A Summary

A.1 Status

V&V Scientist	Jen Lauer
V&V Date (YYYY-MM-DD)	2006.03.16
V&V Edition	1
V&V Disposition and Status	OK
V&V Charge Time	8.27490591

A.2 Comments

The ACIS focal plane temperature was above calibration limits for the first 6 ksec of the observation.