

# V&V Reference Report

## L2 ASCDS Version : 7.6.7.1

Observation 59533 - L2 Version 002  
Chandra X-Ray Center

L2 Processing Date : Mar 16 2006

## Contents

<b>1</b>	<b>Front</b>	<b>2</b>
<b>2</b>	<b>OBI</b>	<b>3</b>
2.1	OBI . . . . .	3
2.1.1	Images . . . . .	3
2.1.2	Bias . . . . .	3
2.1.3	Parameters . . . . .	4
2.1.4	Events . . . . .	4
2.2	Compared Parameters . . . . .	5
2.3	Aspect . . . . .	6
2.4	Star Slots . . . . .	8
2.5	FID Slots . . . . .	8
<b>A</b>	<b>Summary</b>	<b>9</b>
A.1	Status . . . . .	9
A.2	Comments . . . . .	9

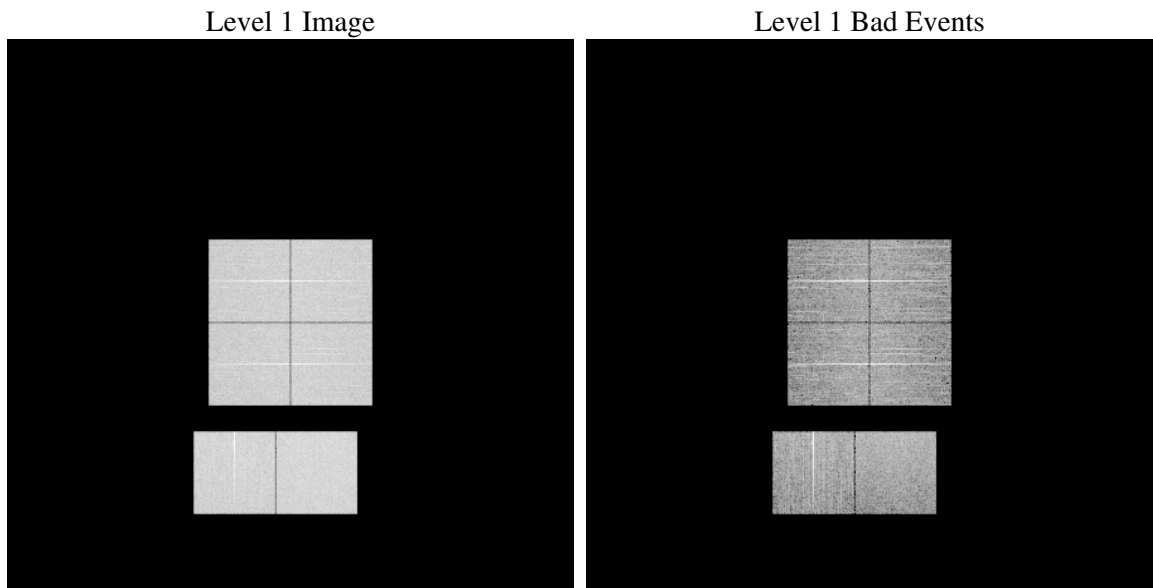
# 1 Front

seq_num	&#160
obs_id	59533
title	ACIS-012367 diagnostics
observer	CHANDRA engineering request/realtime commanding
object	&#160
dtcycle	0
cycle	P
ra_targ	0.0
dec_targ	0.0
ra_nom	273.01902492395
dec_nom	-25.022814525112
roll_nom	274.19028947909
revision	2
ontime	8280.2122974694
livetime	8175.3632636136
ontime0	7628.8168485761
ontime1	7826.5575957596
ontime2	7343.6928326786
ontime3	7596.3250343502
ontime6	8017.8572833836
ontime7	8280.2122974694
l2events	1072946

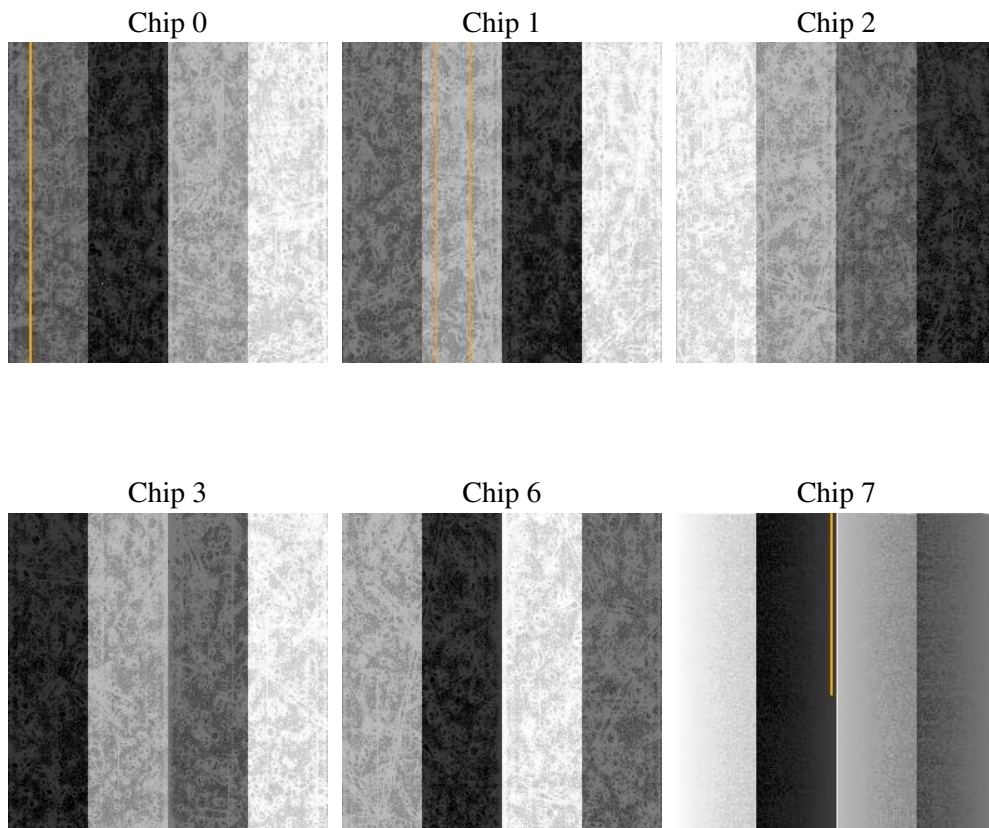
## 2 OBI

### 2.1 OBI

#### 2.1.1 Images



#### 2.1.2 Bias



### 2.1.3 Parameters

obi_num	0
ascdsver	7.6.7.1
caldbver	3.2.1
date	2006-03-16T04:50:14
revision	2

sched_exp_time	0.0
ontime	8280.7747889757
ontime0	7629.3383000791
ontime1	7827.0380072594
ontime2	7344.132204175
ontime3	7596.9285658598
ontime6	8018.2556149065
ontime7	8280.7747889757
l1events	1488493

### 2.1.4 Events

	ccd 0	ccd 1	ccd 2	ccd 3	ccd 6	ccd 7
level 1 events	236393	244702	230911	240364	261903	274220
rejected events	56580	59361	56831	58768	64471	64099
rejected %	23%	24%	24%	24%	24%	23%

	ccd 0	ccd 1	ccd 2	ccd 3	ccd 6	ccd 7
grade 0 events	98321	100532	97314	101570	105700	32614
	41%	41%	42%	42%	40%	11%
grade 1 events	567	526	662	684	594	104
	0%	0%	0%	0%	0%	0%
grade 2 events	31568	33720	28861	30726	34269	65511
	13%	13%	12%	12%	13%	23%
grade 3 events	11717	11782	11282	11674	12386	13774
	4%	4%	4%	4%	4%	5%
grade 4 events	11499	11582	11395	11947	12446	13534
	4%	4%	4%	4%	4%	4%
grade 5 events	3442	3590	3176	3596	3819	6882
	1%	1%	1%	1%	1%	2%
grade 6 events	26708	27725	25228	25679	32631	84688
	11%	11%	10%	10%	12%	30%
grade 7 events	52571	55245	52993	54488	60058	57113
	22%	22%	22%	22%	22%	20%

## 2.2 Compared Parameters

Parameter	Planned	Actual	Parameter	Planned	Actual
Instrument	ACIS	ACIS	Obspar format version number	6	6
Detector	ACIS-012367	ACIS-012367	Obspar file type	PREDICTED	ACTUAL
Grating	NONE	NONE	Obspar update status	NONE	UPDATED
Data mode	FAINT	FAINT	On-chip summing requested	N	N
Observation mode	SECONDARY	SECONDARY	Subarray requested	NONE	NONE
Pointing RA	0	273.0190249239477	Alternating exposures requested	N	N
Pointing Dec	0	-25.022814525112	Primary exposure time	3.2	3.2
Pointing Roll	0.0	274.1902894790878			
SIM focus pos (mm)	-0.782348	-0.7809083437167272			
SIM defocus (mm)	0	0.7524282956875696			
SIM translation stage pos (mm)	-233.592463	250.466033080201			
SIM translation stage offset (mm)	0	-0.01005468664627074			
Observation start time	238548496.637819	238548495.61281			
Observation start date	2005-07-23T23:28:17	2005-07-23T23:28:15			
Observation end time	238570925.688847	238570924.66383			
Observation end date	2005-07-24T05:42:06	2005-07-24T05:42:04			
Read mode	TIMED	TIMED			

## 2.3 Aspect



## **2.4 Star Slots**

## **2.5 FID Slots**



## A Summary

### A.1 Status

V&V Scientist	Jen Lauer
V&V Date (YYYY-MM-DD)	2006.03.16
V&V Edition	1
V&V Disposition and Status	OK
V&V Charge Time	8.28021229

### A.2 Comments