

# V&V Reference Report

## L2 ASCDS Version : 7.6.7.1

Observation 59530 - L2 Version 002  
Chandra X-Ray Center

L2 Processing Date : Mar 16 2006

## Contents

<b>1</b>	<b>Front</b>	<b>2</b>
<b>2</b>	<b>OBI</b>	<b>3</b>
2.1	OBI . . . . .	3
2.1.1	Images . . . . .	3
2.1.2	Bias . . . . .	3
2.1.3	Parameters . . . . .	4
2.1.4	Events . . . . .	4
2.2	Compared Parameters . . . . .	5
2.3	Aspect . . . . .	6
2.4	Star Slots . . . . .	8
2.5	FID Slots . . . . .	8
<b>A</b>	<b>Summary</b>	<b>9</b>
A.1	Status . . . . .	9
A.2	Comments . . . . .	9

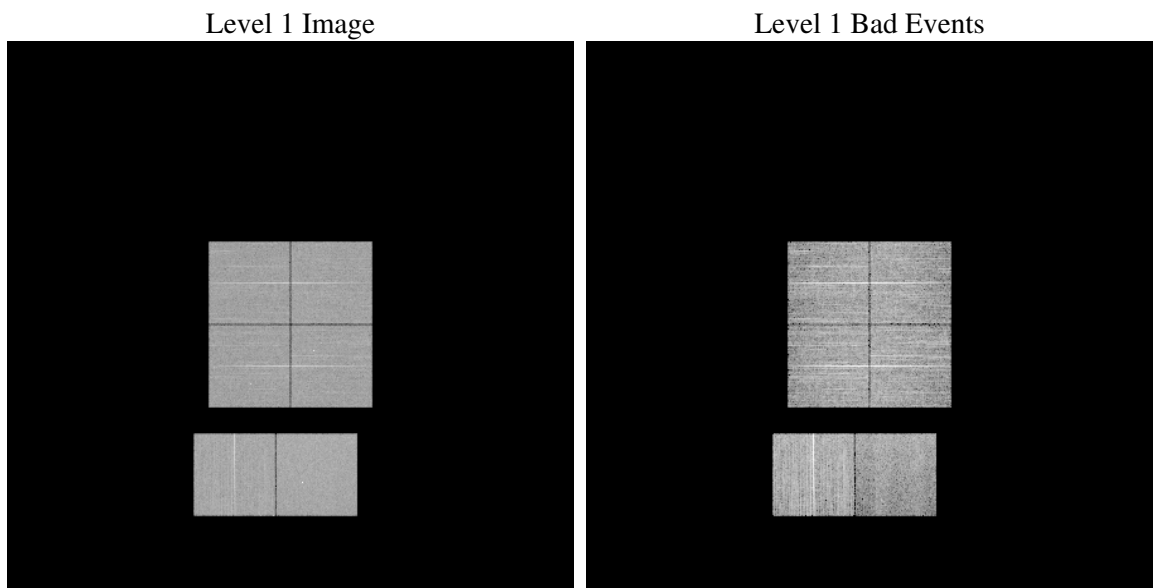
# 1 Front

seq_num	&#160
obs_id	59530
title	ACIS-012367 diagnostics
observer	CHANDRA engineering request/realtime commanding
object	&#160
dtcycle	0
cycle	P
ra_targ	0.0
dec_targ	0.0
ra_nom	337.99361861758
dec_nom	-36.971832715179
roll_nom	67.369844339948
revision	2
ontime	5986.1994823515
livetime	5910.3986200494
ontime0	5564.912573874
ontime1	5830.7143580019
ontime2	5458.0425231755
ontime3	5581.0354852378
ontime6	5947.4718587101
ontime7	5986.1994823515
l2events	702018

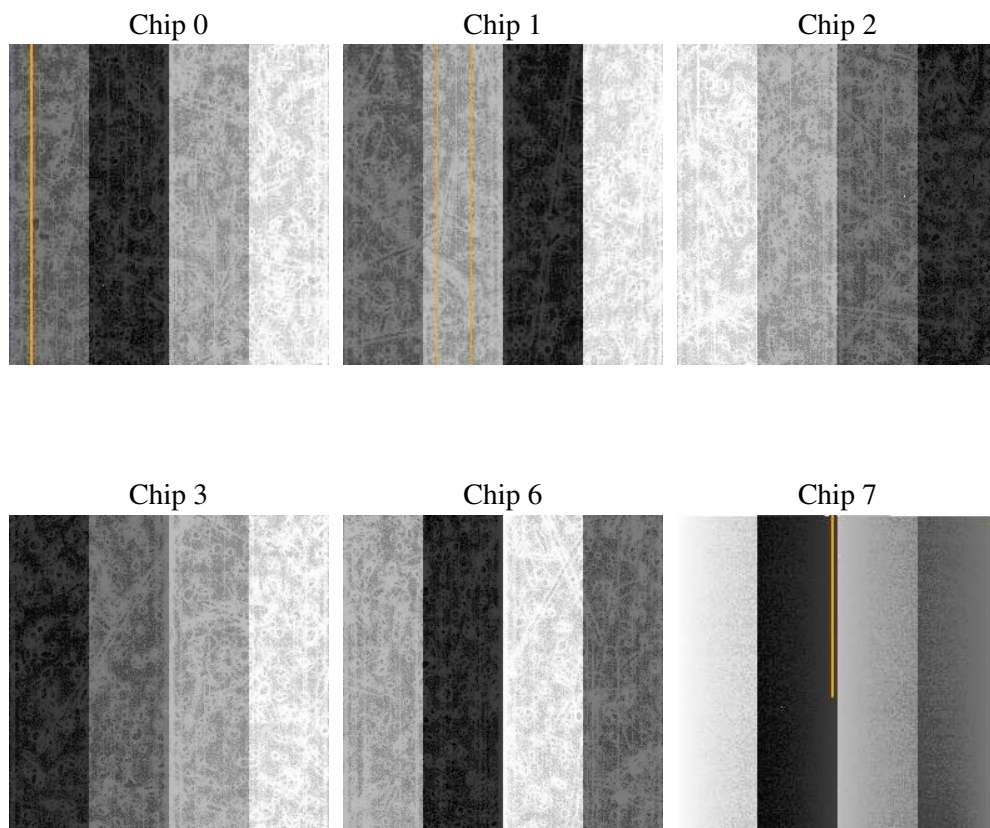
## 2 OBI

### 2.1 OBI

#### 2.1.1 Images



#### 2.1.2 Bias



### 2.1.3 Parameters

obi_num	0
ascdsver	7.6.7.1
caldsver	3.2.1
date	2006-03-16T05:08:03
revision	2

sched_exp_time	0.0
ontime	5989.3884440064
ontime0	5568.0604955256
ontime1	5833.8212396502
ontime2	5461.1083648205
ontime3	5584.265486896
ontime6	5950.4966603816
ontime7	5989.3884440064
l1events	1081442

### 2.1.4 Events

	ccd 0	ccd 1	ccd 2	ccd 3	ccd 6	ccd 7
level 1 events	168314	173987	170088	174315	196773	197965
rejected events	54732	54545	58001	58306	70901	45457
rejected %	32%	31%	34%	33%	36%	22%

	ccd 0	ccd 1	ccd 2	ccd 3	ccd 6	ccd 7
grade 0 events	26265	24877	22759	24264	19862	26033
	15%	14%	13%	13%	10%	13%
grade 1 events	119	102	114	130	143	81
	0%	0%	0%	0%	0%	0%
grade 2 events	59407	64744	62138	63986	74807	31397
	35%	37%	36%	36%	38%	15%
grade 3 events	2849	2921	2480	2670	2139	18649
	1%	1%	1%	1%	1%	9%
grade 4 events	2749	2811	2578	2613	2234	14010
	1%	1%	1%	1%	1%	7%
grade 5 events	1908	2031	1854	2097	2161	4928
	1%	1%	1%	1%	1%	2%
grade 6 events	22377	24156	22177	22542	26906	62492
	13%	13%	13%	12%	13%	31%
grade 7 events	52640	52345	55988	56013	68521	40375
	31%	30%	32%	32%	34%	20%

## 2.2 Compared Parameters

Parameter	Planned	Actual	Parameter	Planned	Actual
Instrument	ACIS	ACIS	Obspar format version number	6	6
Detector	ACIS-012367	ACIS-012367	Obspar file type	PREDICTED	ACTUAL
Grating	NONE	NONE	Obspar update status	NONE	UPDATED
Data mode	FAINT	FAINT	On-chip summing requested	N	N
Observation mode	SECONDARY	SECONDARY	Subarray requested	NONE	NONE
Pointing RA	0	337.9936186175778	Alternating exposures requested	N	N
Pointing Dec	0	-36.9718327151785	Primary exposure time	3.2	3.2
Pointing Roll	0.0	67.36984433994844			
SIM focus pos (mm)	-0.782348	-0.6828225247311905			
SIM defocus (mm)	0	0.8505141146731063			
SIM translation stage pos (mm)	-233.592463	250.4635187648994			
SIM translation stage offset (mm)	0	-0.007540371344731511			
Observation start time	238731692.846216	238731691.82119			
Observation start date	2005-07-26T02:21:33	2005-07-26T02:21:31			
Observation end time	238752920.597189	238752919.57217			
Observation end date	2005-07-26T08:15:21	2005-07-26T08:15:19			
Read mode	TIMED	TIMED			

## 2.3 Aspect



## **2.4 Star Slots**

## **2.5 FID Slots**



# A Summary

## A.1 Status

V&V Scientist	Joy Nichols
V&V Date (YYYY-MM-DD)	2006.03.17
V&V Edition	1
V&V Disposition and Status	OK
V&V Charge Time	5.98619948

## A.2 Comments

Focal plane temperature deliberately seet to about -100 degreess,  
although the temperature decreased during the last half of the  
observation  
to about -115 degrees at the end.