

V&V Reference Report

L2 ASCDS Version : 7.6.7.1

Observation 59527 - L2 Version 002
Chandra X-Ray Center

L2 Processing Date : Mar 16 2006

Contents

1	Front	2
2	OBI	3
2.1	OBI	3
2.1.1	Images	3
2.1.2	Bias	3
2.1.3	Parameters	4
2.1.4	Events	4
2.2	Compared Parameters	5
2.3	Aspect	6
2.4	Star Slots	8
2.5	FID Slots	8
A	Summary	9
A.1	Status	9
A.2	Comments	9

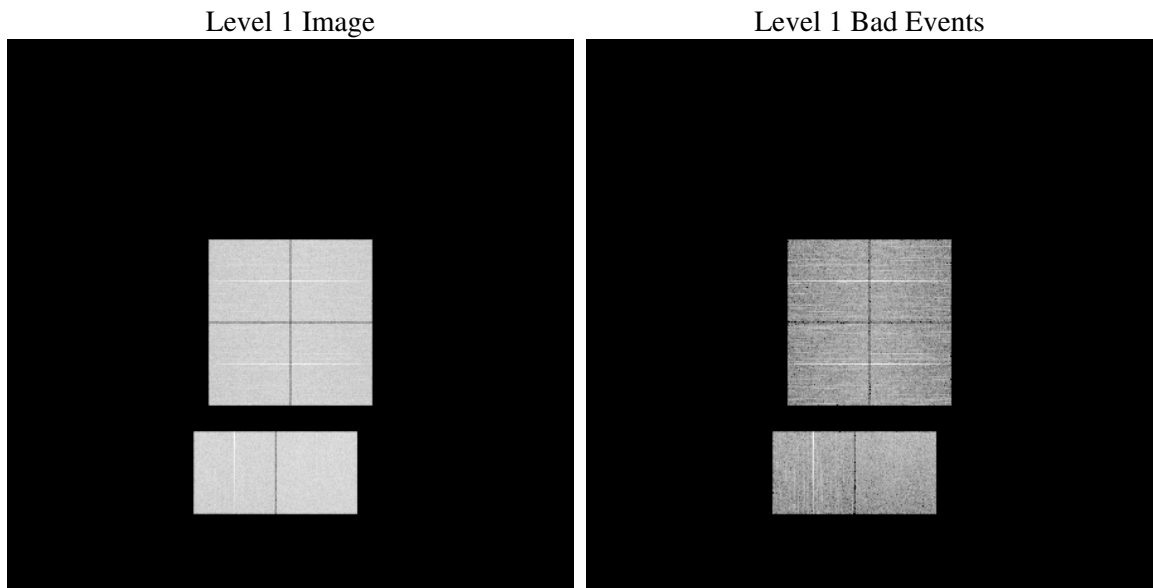
1 Front

seq_num	
obs_id	59527
title	ACIS-012367 diagnostics
observer	CHANDRA engineering request/realtime commanding
object	
dtcycle	0
cycle	P
ra_targ	0.0
dec_targ	0.0
ra_nom	338.97048648032
dec_nom	-10.98194160653
roll_nom	108.47944206872
revision	2
ontime	7798.1372286379
livetime	7699.3925195744
ontime0	6991.1739242673
ontime1	7201.8788434863
ontime2	6809.7611580789
ontime3	6958.6821513772
ontime6	7432.0704747736
ontime7	7798.1372286379
l2events	1024140

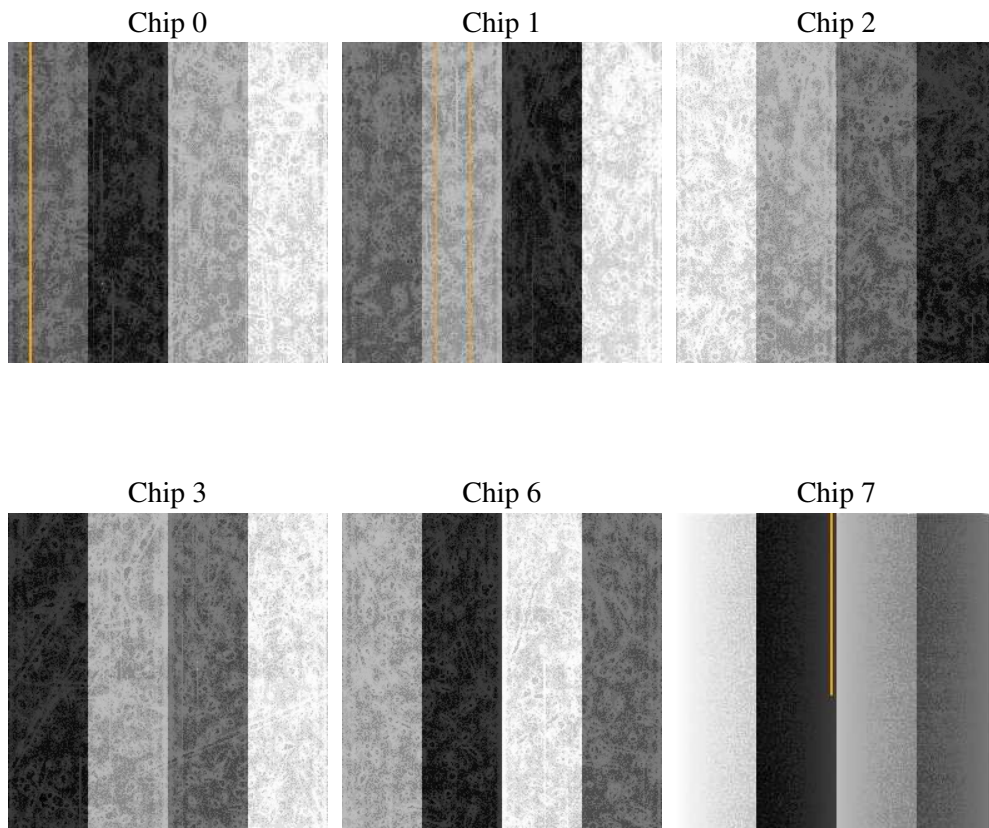
2 OBI

2.1 OBI

2.1.1 Images



2.1.2 Bias



2.1.3 Parameters

obi_num	1
ascdsver	7.6.7.1
caldbver	3.2.1
date	2006-03-16T05:51:04
revision	2

sched_exp_time	0.0
ontime	7801.1107869744
ontime0	6994.1064426005
ontime1	7204.7703218162
ontime2	6812.6115964055
ontime3	6961.696749717
ontime6	7434.8798731267
ontime7	7801.1107869744
l1events	1406718

2.1.4 Events

	ccd 0	ccd 1	ccd 2	ccd 3	ccd 6	ccd 7
level 1 events	220662	228394	220839	226263	246019	264541
rejected events	51817	52490	53978	54941	57332	59000
rejected %	23%	22%	24%	24%	23%	22%

	ccd 0	ccd 1	ccd 2	ccd 3	ccd 6	ccd 7
grade 0 events	92432	95176	92866	95835	101478	35246
	41%	41%	42%	42%	41%	13%
grade 1 events	597	536	626	651	548	101
	0%	0%	0%	0%	0%	0%
grade 2 events	29384	31344	28097	29359	32788	61504
	13%	13%	12%	12%	13%	23%
grade 3 events	11063	11227	10966	11177	11763	14377
	5%	4%	4%	4%	4%	5%
grade 4 events	10922	11453	10922	10972	11774	14384
	4%	5%	4%	4%	4%	5%
grade 5 events	3194	3397	2878	3471	3694	6863
	1%	1%	1%	1%	1%	2%
grade 6 events	25111	26781	24084	24054	30963	80110
	11%	11%	10%	10%	12%	30%
grade 7 events	47959	48480	50400	50744	53011	51956
	21%	21%	22%	22%	21%	19%

2.2 Compared Parameters

Parameter	Planned	Actual	Parameter	Planned	Actual
Instrument	ACIS	ACIS	Obspar format version number	6	6
Detector	ACIS-012367	ACIS-012367	Obspar file type	PREDICTED	ACTUAL
Grating	NONE	NONE	Obspar update status	NONE	UPDATED
Data mode	FAINT	FAINT	On-chip summing requested	N	N
Observation mode	SECONDARY	SECONDARY	Subarray requested	NONE	NONE
Pointing RA	0	338.9704864803172	Alternating exposures requested	N	N
Pointing Dec	0	-10.98194160652972	Primary exposure time	3.2	3.2
Pointing Roll	0.0	108.4794420687233			
SIM focus pos (mm)	-0.782348	-0.6828225247311905			
SIM defocus (mm)	0	0.8505141146731063			
SIM translation stage pos (mm)	-233.592463	250.4635187648994			
SIM translation stage offset (mm)	0	-0.007540371344731511			
Observation start time	238961850.456743	238961849.43173			
Observation start date	2005-07-28T18:17:30	2005-07-28T18:17:29			
Observation end time	239014098.809136	239014097.78412			
Observation end date	2005-07-29T08:48:19	2005-07-29T08:48:17			
Read mode	TIMED	TIMED			

2.3 Aspect

2.4 Star Slots

2.5 FID Slots

A Summary

A.1 Status

V&V Scientist	Jen Lauer
V&V Date (YYYY-MM-DD)	2006.03.16
V&V Edition	1
V&V Disposition and Status	OK
V&V Charge Time	7.79813722

A.2 Comments