

V&V Reference Report

L2 ASCDS Version : 8.5.1.1

Observation 59523 - L2 Version 3
Chandra X-Ray Center

L2 Processing Date : Dec 27 2012

Contents

1	Front	2
2	OBI	3
2.1	OBI	3
2.1.1	Images	3
2.1.2	Bias	3
2.1.3	Parameters	4
2.1.4	Events	4
2.2	Compared Parameters	5
2.3	Star Slots	6
2.4	FID Slots	6
A	Summary	7
A.1	Status	7
A.2	Comments	7

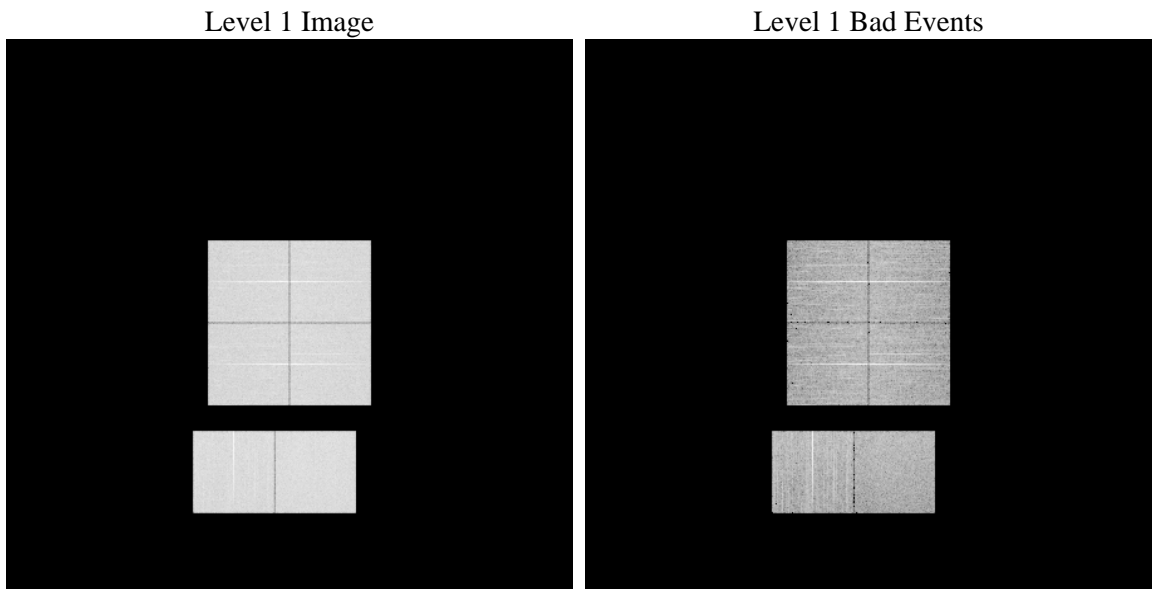
1 Front

seq_num	 	Sequence number
obs_id	59523	Observation id
title	ACIS-012367 diagnostics	Proposal title
observer	CHANDRA engineering request/realtime commanding	Principal investig
object	 	Source name
dtcycle	0	
cycle	P	events from which exps? Prim/Second/Both
ra_targ	0.0	Observer's specified target RA [deg]
dec_targ	0.0	Observer's specified target Dec [deg]
ra_nom	304.98121728593	Nominal RA [deg]
dec_nom	9.4775826315287	Nominal Dec [deg]
roll_nom	192.48034385258	Nominal Roll [deg]
revision	3	Processing version of data
ontime	8275.1999691725	Sum of GTIs [s]
livetime	8170.4144044356	Livetime [s]
ontime0	7831.1861581802	Sum of GTIs [s]
ontime1	8045.0905781984	Sum of GTIs [s]
ontime2	7507.0883885324	Sum of GTIs [s]
ontime3	7792.2942250073	Sum of GTIs [s]
ontime6	8093.7050038874	Sum of GTIs [s]
ontime7	8275.1999691725	Sum of GTIs [s]
l2events	1084050	Number of level 2 events

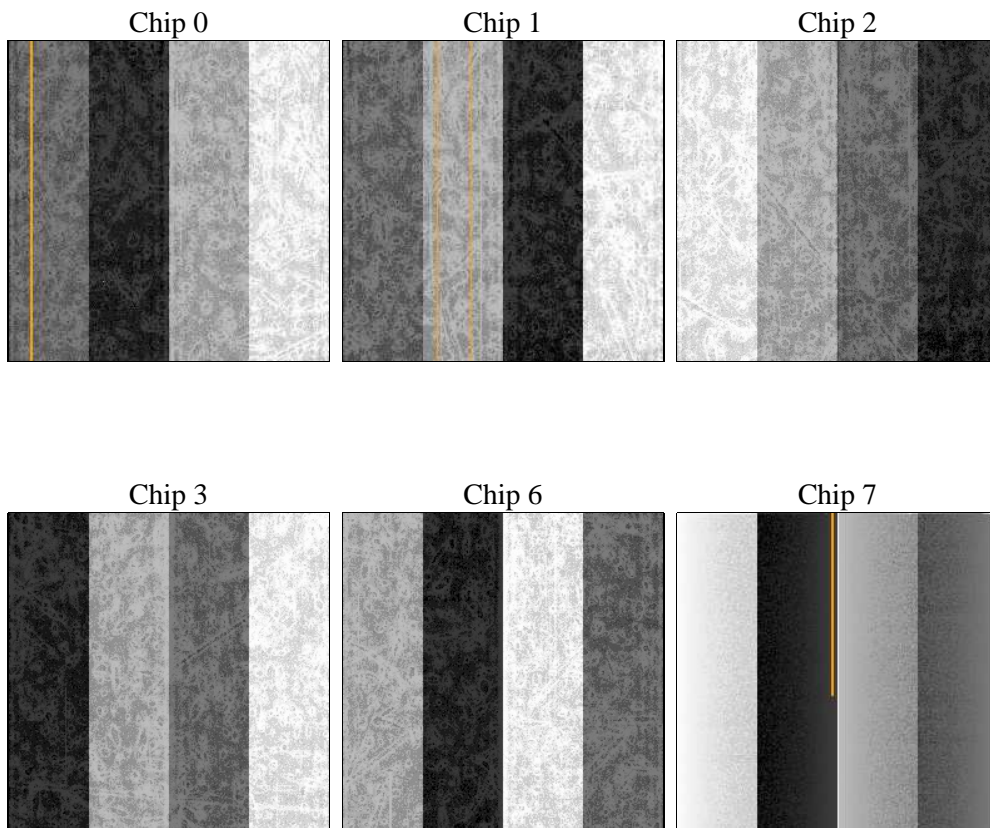
2 OBI

2.1 OBI

2.1.1 Images



2.1.2 Bias



2.1.3 Parameters

obi_num	1	Obi number	sched_exp_time	0.0	[s] Scheduled observation exposure time
ascdsver	8.5.1.1	Processing system revision	ontime	8275.1999691725	Sum of GTIs [s]
caldbver	4.5.5	 	ontime0	7831.1861581802	Sum of GTIs [s]
date	2012-12-27T03:07:49	Date and time of file creation	ontime1	8045.0905781984	Sum of GTIs [s]
revision	3	Processing version of data	ontime2	7507.0883885324	Sum of GTIs [s]
			ontime3	7792.2942250073	Sum of GTIs [s]
			ontime6	8093.7050038874	Sum of GTIs [s]
			ontime7	8275.1999691725	Sum of GTIs [s]
			l1events	1486117	Number of level 1 events

2.1.4 Events

	ccd 0	ccd 1	ccd 2	ccd 3	ccd 6	ccd 7		ccd 0	ccd 1	ccd 2	ccd 3	ccd 6	ccd 7
level 1 events	237220	245170	232182	241285	260889	269371	grade 0 events	99599	101918	97972	103193	105336	50214
rejected events	56075	57014	57219	58344	65171	52754		41%	41%	42%	42%	40%	18%
rejected %	23%	23%	24%	24%	24%	19%	grade 1 events	560	504	663	673	553	177
								0%	0%	0%	0%	0%	0%
							grade 2 events	31267	33857	28859	30457	34115	47580
								13%	13%	12%	12%	13%	17%
							grade 3 events	11727	11893	11367	11915	12034	21087
								4%	4%	4%	4%	4%	7%
							grade 4 events	11663	11921	11457	11895	11918	20616
								4%	4%	4%	4%	4%	7%
							grade 5 events	3437	3507	3171	3547	3649	9157
								1%	1%	1%	1%	1%	3%
							grade 6 events	26889	28567	25308	25574	32315	77120
								11%	11%	10%	10%	12%	28%
							grade 7 events	52078	53003	53385	54031	60969	43420
								21%	21%	22%	22%	23%	16%

2.2 Compared Parameters

Parameter	Planned	Actual	Parameter	Planned	Actual
Instrument	ACIS	ACIS	Obspar format version number	7	7
Detector	ACIS-012367	ACIS-012367	Obspar file type	PREDICTED	ACTUAL
Grating	NONE	NONE	Obspar update status	NONE	UPDATED
Data mode	FAINT	FAINT	On-chip summing requested	N	N
Observation mode	SECONDARY	SECONDARY	Subarray requested	NONE	NONE
[deg] Pointing RA	0	304.9812172859275	Alternating exposures requested	N	N
[deg] Pointing Dec	0	9.477582631528666	[s] Primary exposure time	3.2	3.2
[deg] Pointing Roll	0.0	192.4803438525799			
[mm] SIM focus pos	-0.782348	-0.7809083437167272			
[mm] SIM defocus	0	0.7524282956875696			
[mm] SIM translation stage pos	-233.592463	250.466033080201			
[mm] SIM translation stage offset	0	-0.01005468664627074			
[s] Observation start time (MET)	239232415.619104	239232414.59411			
Observation start date	2005-07-31T21:26:56	2005-07-31T21:26:54			
[s] Observation end time (MET)	239256004.970183	239256003.94519			
Observation end date	2005-08-01T04:00:05	2005-08-01T04:00:03			
Read mode	TIMED	TIMED			

2.3 Star Slots

2.4 FID Slots

A Summary

A.1 Status

V&V Scientist	Jen Lauer
V&V Date (YYYY-MM-DD)	2013.01.23
V&V Edition	1
V&V Disposition and Status	OK
V&V Charge Time	8.2751999691725

A.2 Comments