

V&V Reference Report

L2 ASCDS Version : 7.6.7.1

Observation 59520 - L2 Version 002
Chandra X-Ray Center

L2 Processing Date : Mar 19 2006

Contents

1	Front	2
2	OBI	3
2.1	OBI	3
2.1.1	Images	3
2.1.2	Bias	3
2.1.3	Parameters	4
2.1.4	Events	4
2.2	Compared Parameters	5
2.3	Aspect	6
2.4	Star Slots	8
2.5	FID Slots	8
A	Summary	9
A.1	Status	9
A.2	Comments	9

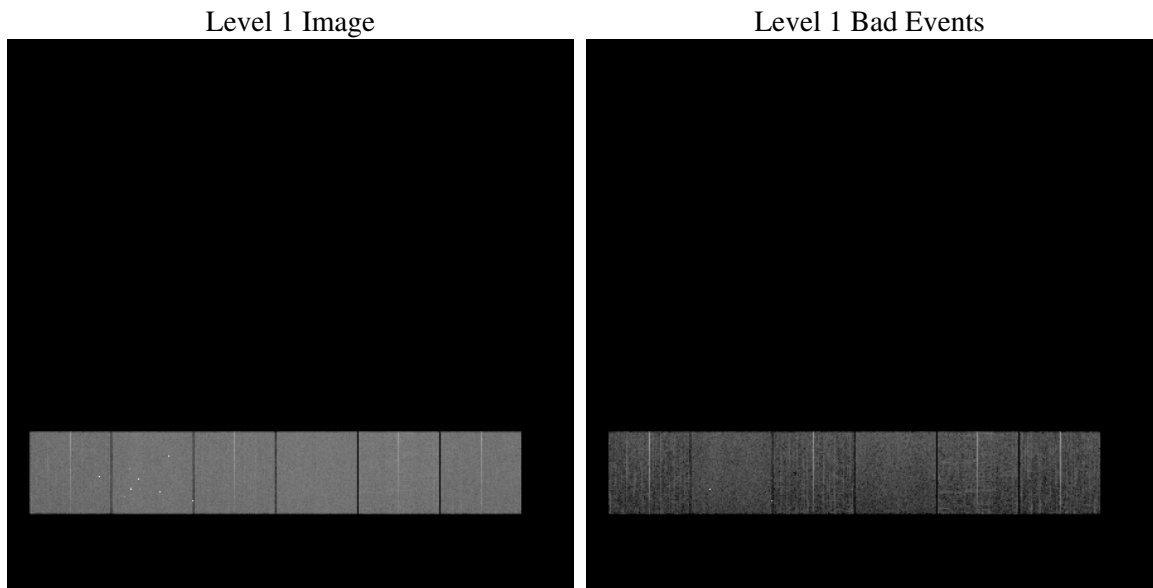
1 Front

seq_num	
obs_id	59520
title	ACIS-456789 diagnostics
observer	CHANDRA engineering request/realtime commanding
object	
dtcycle	0
cycle	P
ra_targ	0.0
dec_targ	0.0
ra_nom	300.18599986001
dec_nom	7.4749943149
roll_nom	208.06548217543
revision	2
ontime	8259.1999692321
livetime	8154.6170061285
ontime4	7395.2280500829
ontime5	8259.1999692321
ontime6	7912.4152674973
ontime7	8259.1999692321
ontime8	8181.4163926244
ontime9	7776.2944835722
l2events	1047340

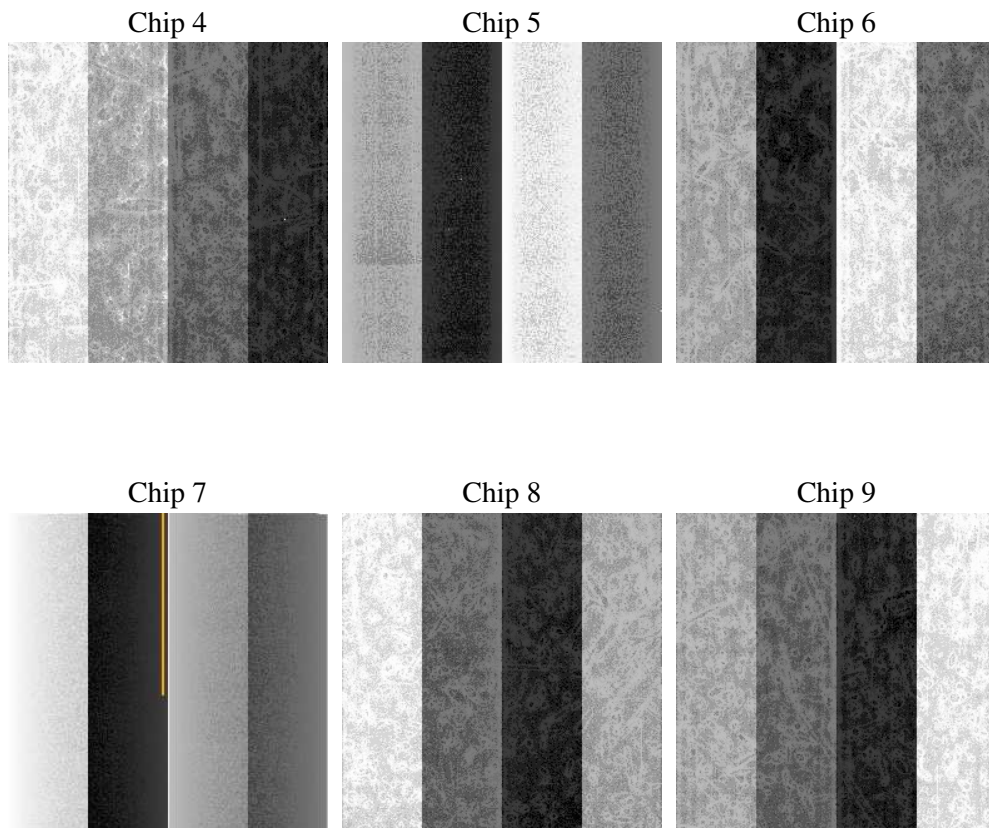
2 OBI

2.1 OBI

2.1.1 Images



2.1.2 Bias



2.1.3 Parameters

obi_num	1
ascdsver	7.6.7.1
caldsver	3.2.1
date	2006-03-19T12:23:42
revision	2

sched_exp_time	0.0
ontime	8280.7748791277
ontime4	7415.4338599443
ontime5	8280.7748791277
ontime6	7930.7491970956
ontime7	8280.7748791277
ontime8	8202.99130252
ontime9	7791.3874329031
l1events	1484790

2.1.4 Events

	ccd 4	ccd 5	ccd 6	ccd 7	ccd 8	ccd 9
level 1 events	221523	257183	246568	259130	264982	235404
rejected events	56756	64493	57991	59007	63299	56916
rejected %	25%	25%	23%	22%	23%	24%

	ccd 4	ccd 5	ccd 6	ccd 7	ccd 8	ccd 9
grade 0 events	97040	24601	102666	32492	108764	98338
	43%	9%	41%	12%	41%	41%
grade 1 events	698	170	499	101	580	536
	0%	0%	0%	0%	0%	0%
grade 2 events	25561	86897	32595	62028	35629	30600
	11%	33%	13%	23%	13%	12%
grade 3 events	11043	5509	11883	13604	13427	11458
	4%	2%	4%	5%	5%	4%
grade 4 events	10683	5393	11819	13296	13406	11515
	4%	2%	4%	5%	5%	4%
grade 5 events	3173	7208	3597	6642	4453	3747
	1%	2%	1%	2%	1%	1%
grade 6 events	20914	70745	30010	79175	30869	26851
	9%	27%	12%	30%	11%	11%
grade 7 events	52411	56660	53499	51792	57854	52359
	23%	22%	21%	19%	21%	22%

2.2 Compared Parameters

Parameter	Planned	Actual	Parameter	Planned	Actual
Instrument	ACIS	ACIS	Obspar format version number	6	6
Detector	ACIS-456789	ACIS-456789	Obspar file type	PREDICTED	ACTUAL
Grating	NONE	NONE	Obspar update status	NONE	UPDATED
Data mode	FAINT	FAINT	On-chip summing requested	N	N
Observation mode	SECONDARY	SECONDARY	Subarray requested	NONE	NONE
Pointing RA	0	300.1859998600106	Alternating exposures requested	N	N
Pointing Dec	0	7.474994314899953	Primary exposure time	3.2	3.2
Pointing Roll	0.0	208.0654821754301			
SIM focus pos (mm)	-0.684267	-0.7809083437167272			
SIM defocus (mm)	0	0.7524282956875696			
SIM translation stage pos (mm)	-190.132523	250.4635187648994			
SIM translation stage offset (mm)	0	-0.007540371344731511			
Observation start time	239457399.029409	239457398.00442			
Observation start date	2005-08-03T11:56:39	2005-08-03T11:56:38			
Observation end time	239480904.330485	239480903.30549			
Observation end date	2005-08-03T18:28:24	2005-08-03T18:28:23			
Read mode	TIMED	TIMED			

2.3 Aspect

2.4 Star Slots

2.5 FID Slots

A Summary

A.1 Status

V&V Scientist	Jen Lauer
V&V Date (YYYY-MM-DD)	2006.03.20
V&V Edition	1
V&V Disposition and Status	OK
V&V Charge Time	8.25919996

A.2 Comments