

# V&V Reference Report

## L2 ASCDS Version : 7.6.7.1

Observation 59459 - L2 Version 002  
Chandra X-Ray Center

L2 Processing Date : Mar 23 2006

## Contents

<b>1</b>	<b>Front</b>	<b>2</b>
<b>2</b>	<b>OBI</b>	<b>3</b>
2.1	OBI . . . . .	3
2.1.1	Images . . . . .	3
2.1.2	Bias . . . . .	3
2.1.3	Parameters . . . . .	4
2.1.4	Events . . . . .	4
2.2	Compared Parameters . . . . .	5
2.3	Aspect . . . . .	6
2.4	Star Slots . . . . .	8
2.5	FID Slots . . . . .	8
<b>A</b>	<b>Summary</b>	<b>9</b>
A.1	Status . . . . .	9
A.2	Comments . . . . .	9

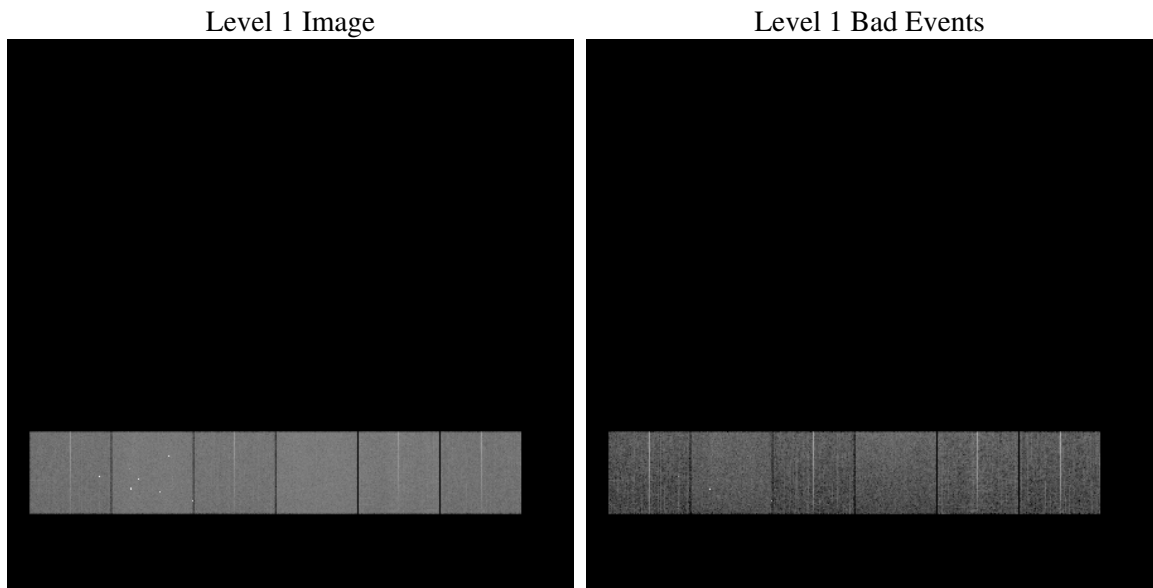
# 1 Front

seq_num	&#160
obs_id	59459
title	ACIS-456789 diagnostics
observer	CHANDRA engineering request/realtime commanding
object	&#160
dtcycle	0
cycle	P
ra_targ	0.0
dec_targ	0.0
ra_nom	324.99174238419
dec_nom	18.972496319536
roll_nom	221.16830859674
revision	2
ontime	8182.3999695182
livetime	8078.7894942544
ontime4	6743.404838711
ontime5	8182.3999695182
ontime6	7180.9370792508
ontime7	8182.3999695182
ontime8	7427.2515515983
ontime9	7028.6114038229
l2events	1043297

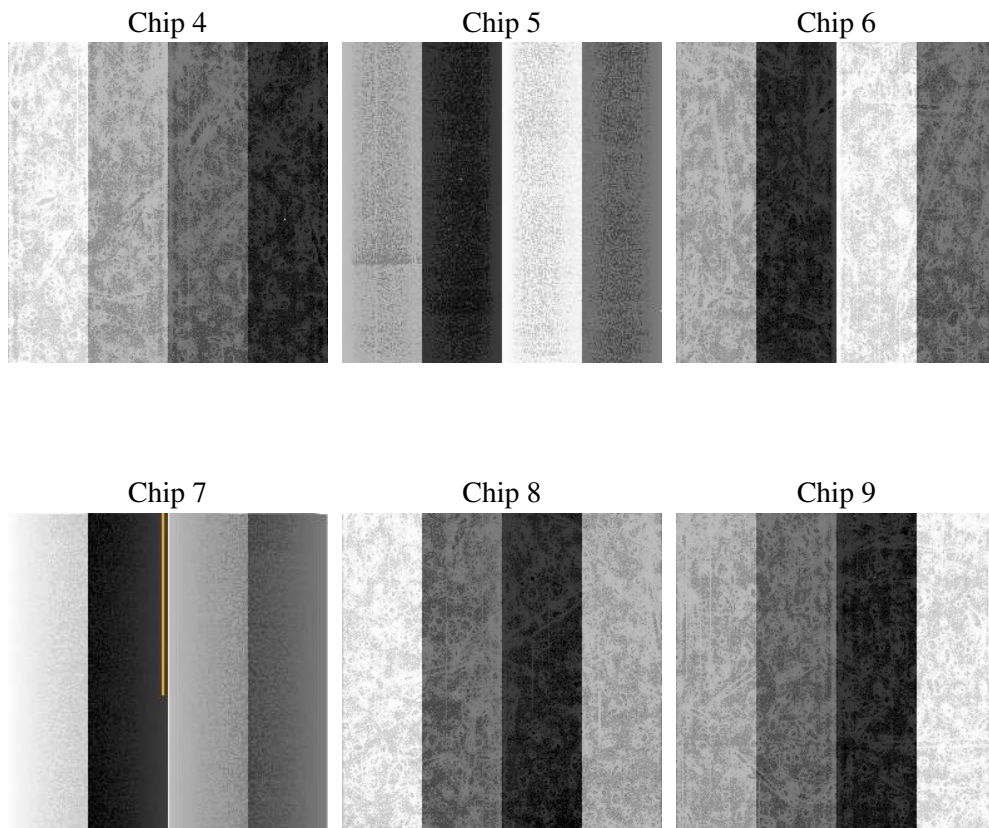
## 2 OBI

### 2.1 OBI

#### 2.1.1 Images



#### 2.1.2 Bias



### 2.1.3 Parameters

obi_num	0
ascdsver	7.6.7.1
caldbver	3.2.1
date	2006-03-24T01:36:29
revision	2

sched_exp_time	0.0
ontime	8277.5365000665
ontime4	6815.8544872403
ontime5	8277.5365000665
ontime6	7272.832629472
ontime7	8277.5365000665
ontime8	7522.3880821466
ontime9	7117.2659937143
l1events	1488571

### 2.1.4 Events

	ccd 4	ccd 5	ccd 6	ccd 7	ccd 8	ccd 9
level 1 events	215172	269320	237878	275391	261388	229422
rejected events	55489	68619	57329	63970	65607	58064
rejected %	25%	25%	24%	23%	25%	25%

	ccd 4	ccd 5	ccd 6	ccd 7	ccd 8	ccd 9
grade 0 events	93528	26177	97394	34632	105668	94642
	43%	9%	40%	12%	40%	41%
grade 1 events	742	223	531	101	626	604
	0%	0%	0%	0%	0%	0%
grade 2 events	24859	92676	31459	65795	34859	29448
	11%	34%	13%	23%	13%	12%
grade 3 events	10741	5847	11260	14395	13183	10954
	4%	2%	4%	5%	5%	4%
grade 4 events	10511	5584	11477	14042	12763	10914
	4%	2%	4%	5%	4%	4%
grade 5 events	3013	6610	3461	6881	4328	3669
	1%	2%	1%	2%	1%	1%
grade 6 events	21581	72818	31159	84914	31634	27512
	10%	27%	13%	30%	12%	11%
grade 7 events	50197	59385	51137	54631	58327	51679
	23%	22%	21%	19%	22%	22%

## 2.2 Compared Parameters

Parameter	Planned	Actual	Parameter	Planned	Actual
Instrument	ACIS	ACIS	Obspar format version number	6	6
Detector	ACIS-456789	ACIS-456789	Obspar file type	PREDICTED	ACTUAL
Grating	NONE	NONE	Obspar update status	NONE	UPDATED
Data mode	FAINT	FAINT	On-chip summing requested	N	N
Observation mode	SECONDARY	SECONDARY	Subarray requested	NONE	NONE
Pointing RA	0	324.9917423841877	Alternating exposures requested	N	N
Pointing Dec	0	18.97249631953576	Primary exposure time	3.2	3.2
Pointing Roll	0.0	221.1683085967436			
SIM focus pos (mm)	-0.684267	-0.6828225247311905			
SIM defocus (mm)	0	0.8505141146731063			
SIM translation stage pos (mm)	-190.132523	250.466033080201			
SIM translation stage offset (mm)	0	-0.01005468664627074			
Observation start time	242442758.816381	242442757.79137			
Observation start date	2005-09-07T01:12:39	2005-09-07T01:12:37			
Observation end time	242455177.716952	242455176.69194			
Observation end date	2005-09-07T04:39:38	2005-09-07T04:39:36			
Read mode	TIMED	TIMED			

## 2.3 Aspect



## **2.4 Star Slots**

## **2.5 FID Slots**



## A Summary

### A.1 Status

V&V Scientist	Jen Lauer
V&V Date (YYYY-MM-DD)	2006.03.24
V&V Edition	1
V&V Disposition and Status	OK
V&V Charge Time	8.18239996

### A.2 Comments