

V&V Reference Report

L2 ASCDS Version : 7.6.7.1

Observation 59425 - L2 Version 002
Chandra X-Ray Center

L2 Processing Date : Apr 1 2006

Contents

| | | |
|----------|-------------------------------|----------|
| 1 | Front | 2 |
| 2 | OBI | 3 |
| 2.1 | OBI | 3 |
| 2.1.1 | Images | 3 |
| 2.1.2 | Bias | 3 |
| 2.1.3 | Parameters | 4 |
| 2.1.4 | Events | 4 |
| 2.2 | Compared Parameters | 5 |
| 2.3 | Aspect | 6 |
| 2.4 | Star Slots | 8 |
| 2.5 | FID Slots | 8 |
| A | Summary | 9 |
| A.1 | Status | 9 |
| A.2 | Comments | 9 |

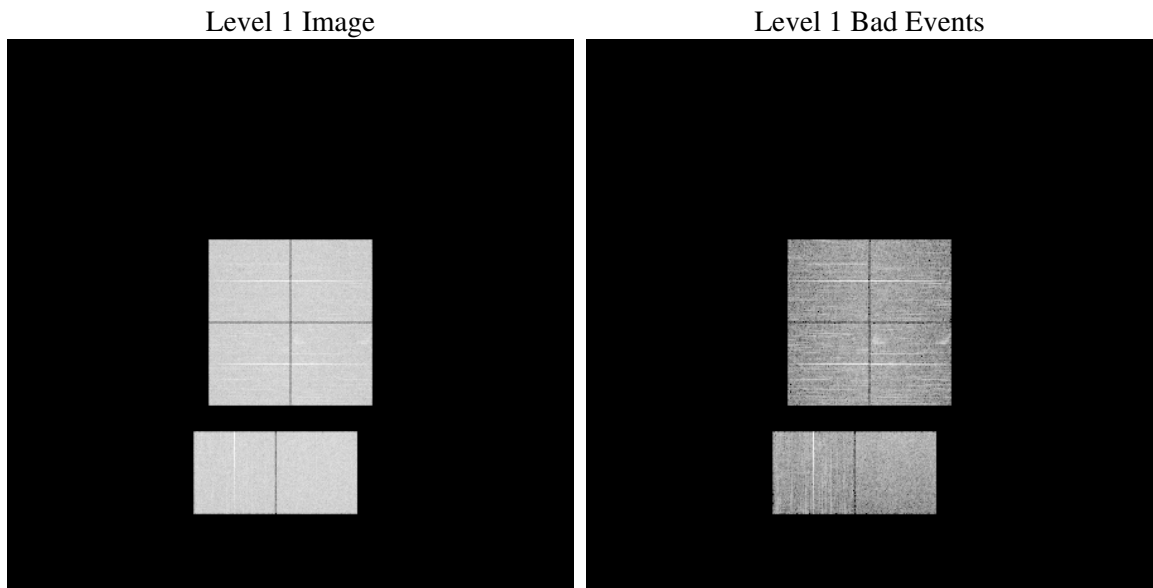
1 Front

| | |
|----------|---|
| seq_num | |
| obs_id | 59425 |
| title | ACIS-012367 diagnostics |
| observer | CHANDRA engineering request/realtime commanding |
| object | |
| dtcycle | 0 |
| cycle | P |
| ra_targ | 0.0 |
| dec_targ | 0.0 |
| ra_nom | 352.984674148 |
| dec_nom | 29.47470930651 |
| roll_nom | 209.29252274875 |
| revision | 2 |
| ontime | 8284.7999691367 |
| livetime | 8179.8928434199 |
| ontime0 | 8284.7999691367 |
| ontime1 | 8284.7999691367 |
| ontime2 | 8284.7999691367 |
| ontime3 | 8281.5590087473 |
| ontime6 | 8284.7999691367 |
| ontime7 | 8284.7999691367 |
| l2events | 1062750 |

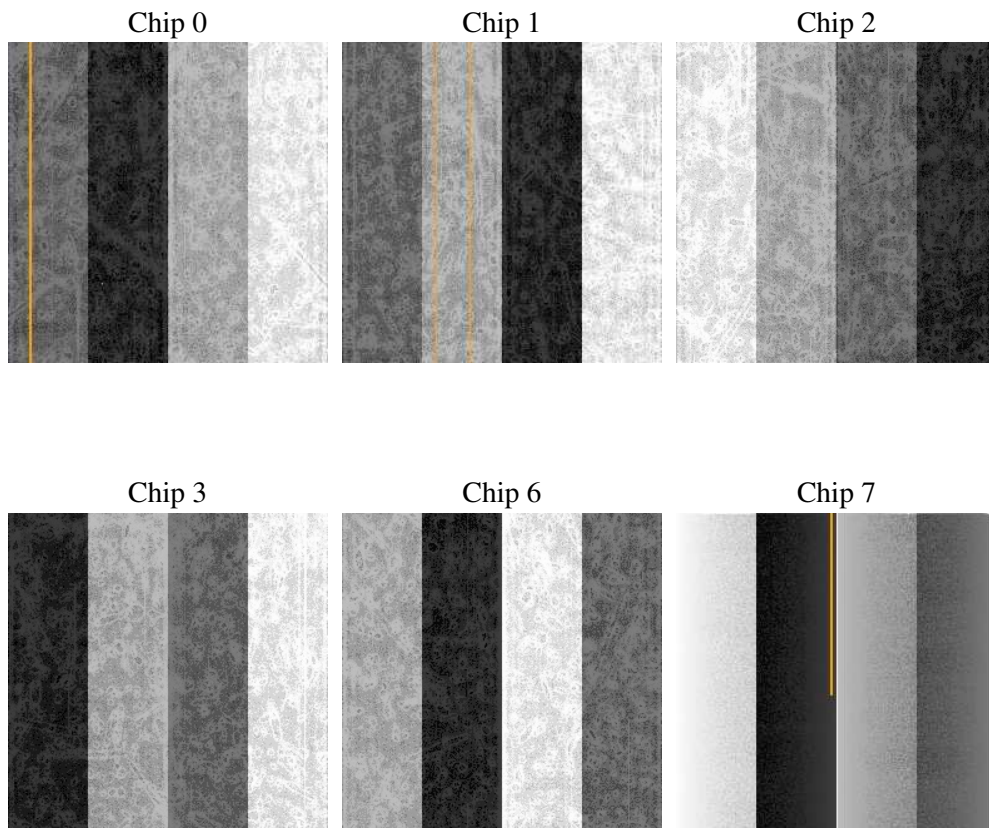
2 OBI

2.1 OBI

2.1.1 Images



2.1.2 Bias



2.1.3 Parameters

| | |
|----------|---------------------|
| obi_num | 0 |
| ascdsver | 7.6.7.1 |
| caldsver | 3.2.1 |
| date | 2006-04-01T04:52:41 |
| revision | 2 |

| | |
|----------------|-----------------|
| sched_exp_time | 0.0 |
| ontime | 8287.2605911195 |
| ontime0 | 8287.2605911195 |
| ontime1 | 8287.2605911195 |
| ontime2 | 8287.2605911195 |
| ontime3 | 8284.0196307302 |
| ontime6 | 8287.2605911195 |
| ontime7 | 8287.2605911195 |
| l1events | 1468663 |

2.1.4 Events

| | ccd 0 | ccd 1 | ccd 2 | ccd 3 | ccd 6 | ccd 7 |
|-----------------|--------|--------|--------|--------|--------|--------|
| level 1 events | 236112 | 236913 | 244240 | 244743 | 250243 | 256412 |
| rejected events | 54626 | 54562 | 60817 | 60822 | 59849 | 59722 |
| rejected % | 23% | 23% | 24% | 24% | 23% | 23% |

| | ccd 0 | ccd 1 | ccd 2 | ccd 3 | ccd 6 | ccd 7 |
|----------------|-------|-------|--------|--------|--------|-------|
| grade 0 events | 99507 | 99451 | 102438 | 102883 | 102753 | 31377 |
| | 42% | 41% | 41% | 42% | 41% | 12% |
| grade 1 events | 555 | 511 | 680 | 633 | 516 | 88 |
| | 0% | 0% | 0% | 0% | 0% | 0% |
| grade 2 events | 31613 | 32530 | 30660 | 31383 | 32917 | 60122 |
| | 13% | 13% | 12% | 12% | 13% | 23% |
| grade 3 events | 11926 | 11666 | 12029 | 11969 | 11820 | 13611 |
| | 5% | 4% | 4% | 4% | 4% | 5% |
| grade 4 events | 11760 | 11731 | 12129 | 11987 | 11908 | 13242 |
| | 4% | 4% | 4% | 4% | 4% | 5% |
| grade 5 events | 3359 | 3452 | 3187 | 3640 | 3701 | 6645 |
| | 1% | 1% | 1% | 1% | 1% | 2% |
| grade 6 events | 26752 | 27065 | 26242 | 25780 | 31069 | 78410 |
| | 11% | 11% | 10% | 10% | 12% | 30% |
| grade 7 events | 50640 | 50507 | 56875 | 56468 | 55559 | 52917 |
| | 21% | 21% | 23% | 23% | 22% | 20% |

2.2 Compared Parameters

| Parameter | Planned | Actual | Parameter | Planned | Actual |
|-----------------------------------|---------------------|----------------------|---------------------------------|-----------|---------|
| Instrument | ACIS | ACIS | Obspar format version number | 6 | 6 |
| Detector | ACIS-012367 | ACIS-012367 | Obspar file type | PREDICTED | ACTUAL |
| Grating | NONE | NONE | Obspar update status | NONE | UPDATED |
| Data mode | FAINT | FAINT | On-chip summing requested | N | N |
| Observation mode | SECONDARY | SECONDARY | Subarray requested | NONE | NONE |
| Pointing RA | 0 | 352.9846741479961 | Alternating exposures requested | N | N |
| Pointing Dec | 0 | 29.47470930651045 | Primary exposure time | 3.2 | 3.2 |
| Pointing Roll | 0.0 | 209.2925227487456 | | | |
| SIM focus pos (mm) | -0.782348 | -0.7809083437167272 | | | |
| SIM defocus (mm) | 0 | 0.7524282956875696 | | | |
| SIM translation stage pos (mm) | -233.592463 | 250.466033080201 | | | |
| SIM translation stage offset (mm) | 0 | -0.01005468664627074 | | | |
| Observation start time | 244486982.010344 | 244486980.98534 | | | |
| Observation start date | 2005-09-30T17:03:02 | 2005-09-30T17:03:00 | | | |
| Observation end time | 244510593.911421 | 244510592.88642 | | | |
| Observation end date | 2005-09-30T23:36:34 | 2005-09-30T23:36:32 | | | |
| Read mode | TIMED | TIMED | | | |

2.3 Aspect

2.4 Star Slots

2.5 FID Slots

A Summary

A.1 Status

| | |
|----------------------------|-------------|
| V&V Scientist | Doug Morgan |
| V&V Date (YYYY-MM-DD) | 2006.04.02 |
| V&V Edition | 1 |
| V&V Disposition and Status | OK |
| V&V Charge Time | 8.28479996 |

A.2 Comments