

# V&V Reference Report

## L2 ASCDS Version : 7.6.7.1

Observation 59420 - L2 Version 002  
Chandra X-Ray Center

L2 Processing Date : Apr 1 2006

## Contents

<b>1</b>	<b>Front</b>	<b>2</b>
<b>2</b>	<b>OBI</b>	<b>3</b>
2.1	OBI . . . . .	3
2.1.1	Images . . . . .	3
2.1.2	Bias . . . . .	3
2.1.3	Parameters . . . . .	4
2.1.4	Events . . . . .	4
2.2	Compared Parameters . . . . .	5
2.3	Aspect . . . . .	6
2.4	Star Slots . . . . .	8
2.5	FID Slots . . . . .	8
<b>A</b>	<b>Summary</b>	<b>9</b>
A.1	Status . . . . .	9
A.2	Comments . . . . .	9

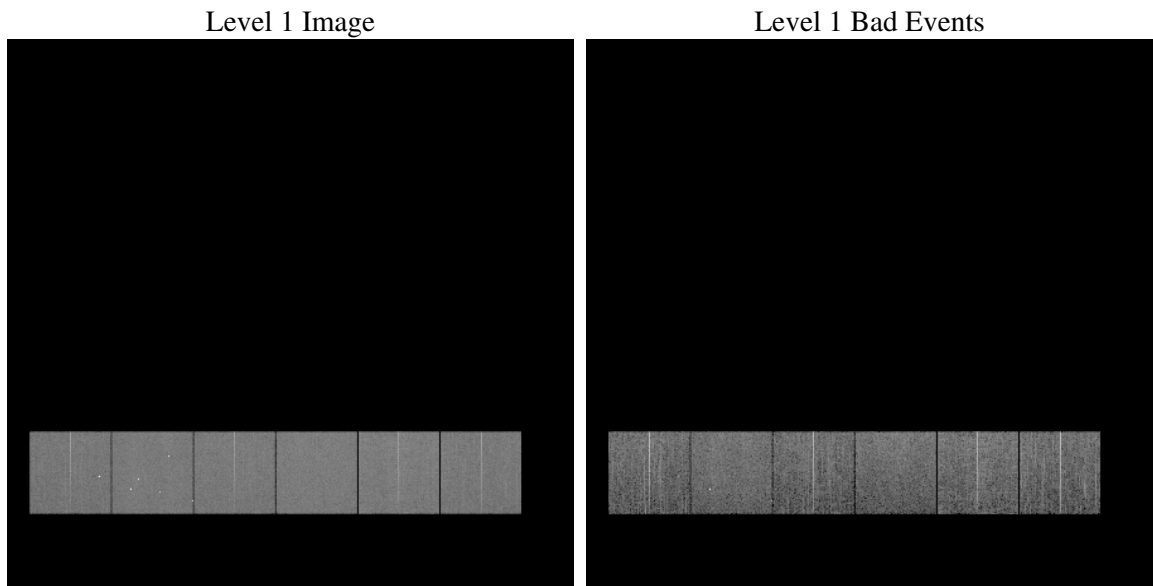
# 1 Front

seq_num	&#160
obs_id	59420
title	ACIS-456789 diagnostics
observer	CHANDRA engineering request/realtime commanding
object	&#160
dtcycle	0
cycle	P
ra_targ	0.0
dec_targ	0.0
ra_nom	350.98827546508
dec_nom	28.47393883854
roll_nom	217.85464553122
revision	2
ontime	7798.3999709487
livetime	7699.6519348838
ontime4	7334.9390589595
ontime5	7798.3999709487
ontime6	7649.31462726
ontime7	7798.3999709487
ontime8	7798.3999709487
ontime9	7571.5312295556
l2events	984603

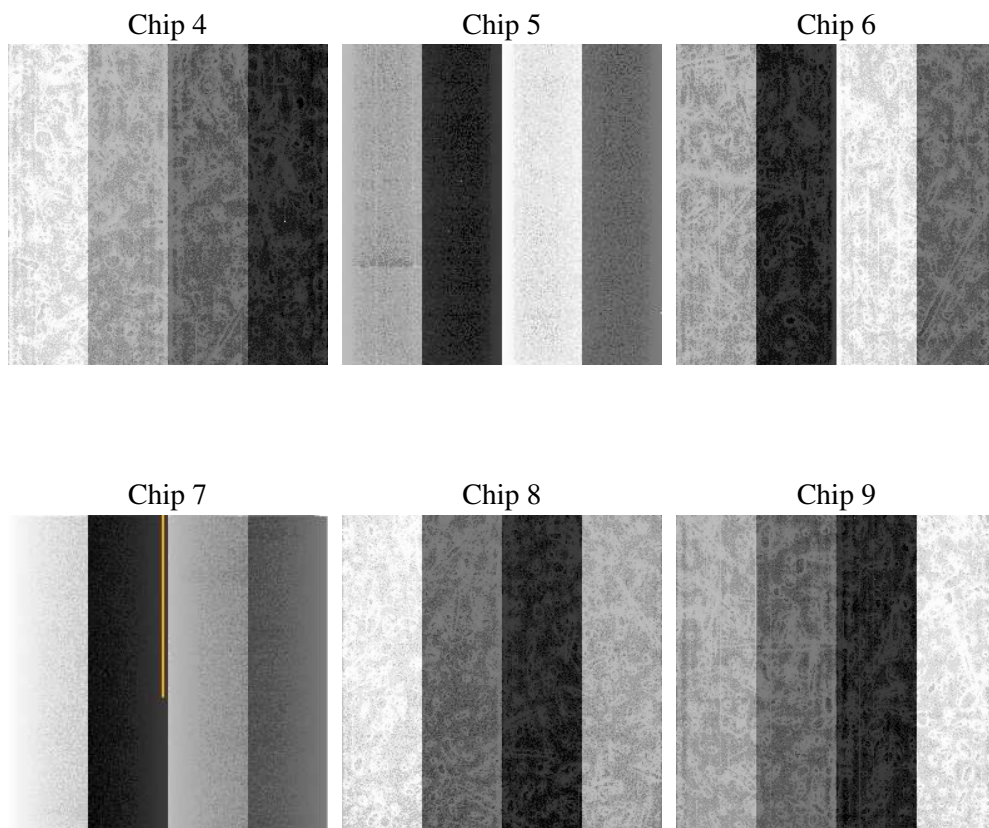
## 2 OBI

### 2.1 OBI

#### 2.1.1 Images



#### 2.1.2 Bias



### 2.1.3 Parameters

obi_num	0
ascdsver	7.6.7.1
caldsver	3.2.1
date	2006-04-01T04:58:51
revision	2

sched_exp_time	0.0
ontime	7801.1140288413
ontime4	7337.653116852
ontime5	7801.1140288413
ontime6	7652.0286851525
ontime7	7801.1140288413
ontime8	7801.1140288413
ontime9	7574.2452874482
l1events	1398603

### 2.1.4 Events

	ccd 4	ccd 5	ccd 6	ccd 7	ccd 8	ccd 9
level 1 events	215476	235434	230949	242873	249055	224816
rejected events	57295	59251	54381	55173	61651	56609
rejected %	26%	25%	23%	22%	24%	25%

	ccd 4	ccd 5	ccd 6	ccd 7	ccd 8	ccd 9
grade 0 events	92285	22325	95977	30950	100371	92403
	42%	9%	41%	12%	40%	41%
grade 1 events	731	898	444	79	475	596
	0%	0%	0%	0%	0%	0%
grade 2 events	24581	79843	30568	57337	33149	28648
	11%	33%	13%	23%	13%	12%
grade 3 events	10716	5275	10963	13065	12315	10760
	4%	2%	4%	5%	4%	4%
grade 4 events	10478	5311	10959	12827	12463	10886
	4%	2%	4%	5%	5%	4%
grade 5 events	3225	5627	3577	6345	4338	3664
	1%	2%	1%	2%	1%	1%
grade 6 events	20188	63521	28172	73577	29172	25582
	9%	26%	12%	30%	11%	11%
grade 7 events	53272	52634	50289	48693	56772	52277
	24%	22%	21%	20%	22%	23%

## 2.2 Compared Parameters

Parameter	Planned	Actual	Parameter	Planned	Actual
Instrument	ACIS	ACIS	Obspar format version number	6	6
Detector	ACIS-456789	ACIS-456789	Obspar file type	PREDICTED	ACTUAL
Grating	NONE	NONE	Obspar update status	NONE	UPDATED
Data mode	FAINT	FAINT	On-chip summing requested	N	N
Observation mode	SECONDARY	SECONDARY	Subarray requested	NONE	NONE
Pointing RA	0	350.9882754650796	Alternating exposures requested	N	N
Pointing Dec	0	28.47393883854048	Primary exposure time	3.2	3.2
Pointing Roll	0.0	217.8546455312196			
SIM focus pos (mm)	-0.684267	-1.038866356238299			
SIM defocus (mm)	0	0.4944702831659975			
SIM translation stage pos (mm)	-190.132523	250.466033080201			
SIM translation stage offset (mm)	0	-0.01005468664627074			
Observation start time	244671861.268839	244671860.24384			
Observation start date	2005-10-02T20:24:21	2005-10-02T20:24:20			
Observation end time	244691840.569758	244691839.54476			
Observation end date	2005-10-03T01:57:21	2005-10-03T01:57:19			
Read mode	TIMED	TIMED			

## 2.3 Aspect



## 2.4 Star Slots

## 2.5 FID Slots



## A Summary

### A.1 Status

V&V Scientist	Doug Morgan
V&V Date (YYYY-MM-DD)	2006.04.02
V&V Edition	1
V&V Disposition and Status	OK
V&V Charge Time	7.79839997

### A.2 Comments